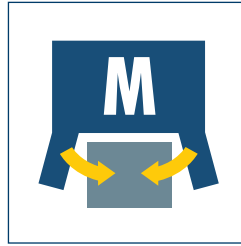




Sizes
34 .. 100



Weight
0.14 kg .. 3.5 kg



Gripping moment
2.1 Nm .. 127 Nm



Opening angle per finger
10° .. 90°



Workpiece weight
0.3 kg .. 6.0 kg

Application example



Rotating/gripping combination for handling small wheel spindles. The 180° opening angle of the gripper eliminates the linear unit that would otherwise be necessary.

① 2-Finger Angular Gripper GWB 64

② Rotary Actuator SRU 35.2-180-3-4

Universal Radial Gripper

180° Angular gripper with gripping force safety device and powerful toggle drive system

Area of application

For areas of application which, in addition to a large gripping force, require the shortest possible motion sequences through the radial design of the jaw stroke.

Your advantages and benefits

Opening angle adjustable from 20° to 180°

Enabling a wide range of applications

Equipped with mechanical gripping force safety device

To keep the gripper fingers closed with the indicated spring force.

Air supply via hose-free direct connection or via fittings

For flexible pressure supply in all automated systems

Kinematics

Toggle system for extremely high gripping force at the moment of workpiece contact



General information on the series

Working principle

Toggle drive system

Housing material

Aluminum alloy, hard-anodized

Base jaw material

Steel

Actuation

Pneumatic, with filtered compressed air (10 µm): Dry, lubricated or non-lubricated
Pressure medium: Requirements on quality of the compressed air according to DIN ISO 8573-1: 6 4 4.

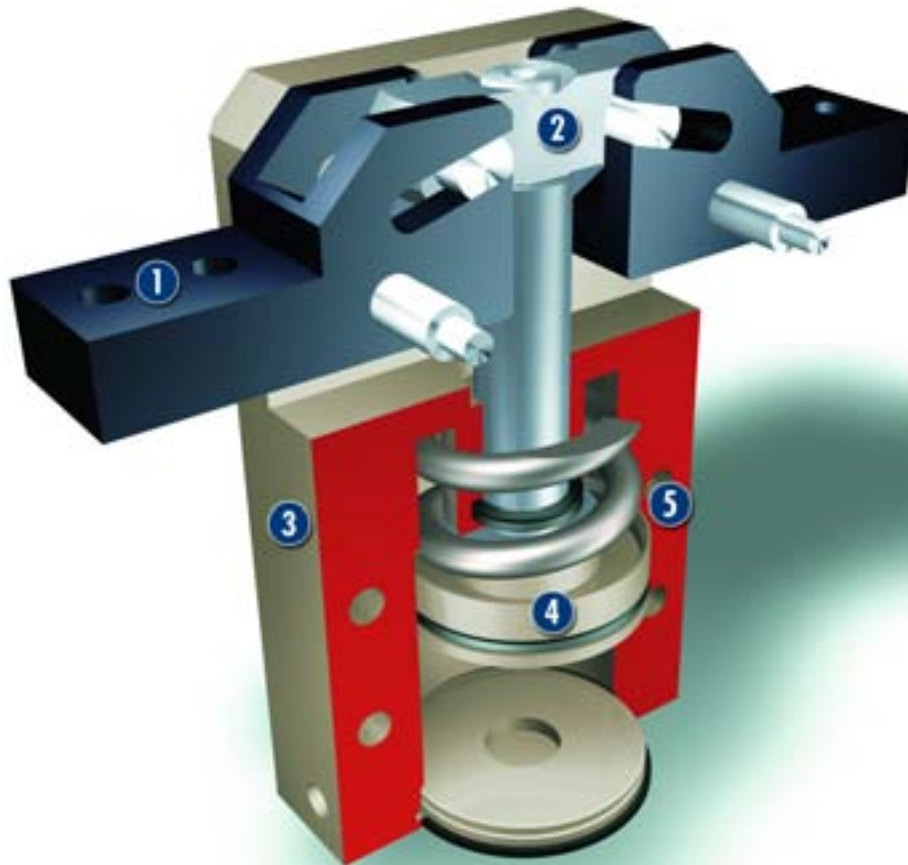
Warranty

24 months

Scope of delivery

Brackets for proximity switches, dowel pins, O-rings for direct connection, assembly and operating manual with manufacturer's declaration

Sectional diagram



- 1 Base jaws**
for the connection of workpiece-specific gripper fingers
- 2 Kinematics**
Toggle system for extremely high gripping force at the moment of workpiece contact
- 3 Housing**
weight-reduced thanks to the use of a hard-anodized, high-strength aluminum alloy
- 4 Drive**
pneumatic for a high power density
- 5 Centering and mounting possibilities**
for universal gripper mounting

Function description

The round piston is pressed up or down by compressed air. In the process, the two pins of the crank system move in unison and relative to the groove in the top jaws. In the gripping moment, these two pins reach the largest lever arm.

Options and special information

180° angular grippers (radial grippers) are advantageous in that they save an additional stroke movement. Since each jaw rotates away by 90°, they are mostly removed from the work area; a stroke movement to retract the entire gripper can be omitted.

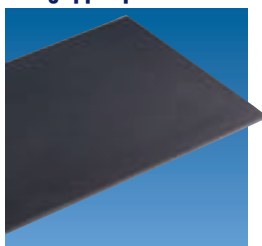
Accessories

Accessories from SCHUNK – the suitable supplement for maximum functionality, reliability and performance of all automation modules.

Quentes plastic inserts



HKI gripper pads



SDV-P pressure maintenance valves



Fittings



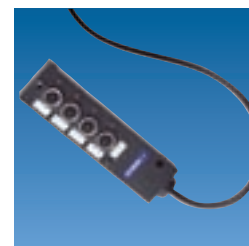
IN inductive proximity switches



KV/KA sensor cables



V sensor distributors



① For the exact size of the required accessories, availability of this size and the designation and ID, please refer to the additional views at the end of the size in question. You will find more detailed information on our accessory range in the "Accessories" catalog section.

General information on the series

Gripping moment

is the arithmetic total of gripping moments for each claw jaw.

Finger length

is measured from the upper edge of the gripper housing in the direction of the main axis. If the maximum permitted finger length is exceeded, as with heavy fingers, the speed of movement of the jaws must be throttled, as is the case for heavy fingers, and/or the opening angle must be reduced. The gripper's life may be shortened.

Repeat accuracy

is defined as the spread of the limit position after 100 consecutive strokes.

Workpiece weight

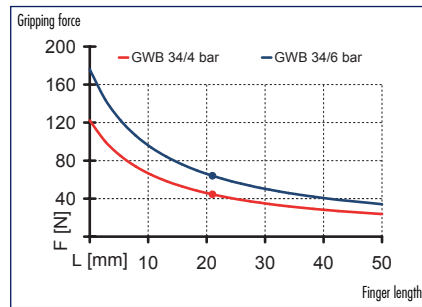
The recommended workpiece weight is calculated for a force-type connection with a coefficient of friction of 0.1 and a safety factor of 2 against slippage of the workpiece on acceleration due to gravity g . Considerably heavier workpiece weights are permitted with form-fit gripping.

Closing and opening times

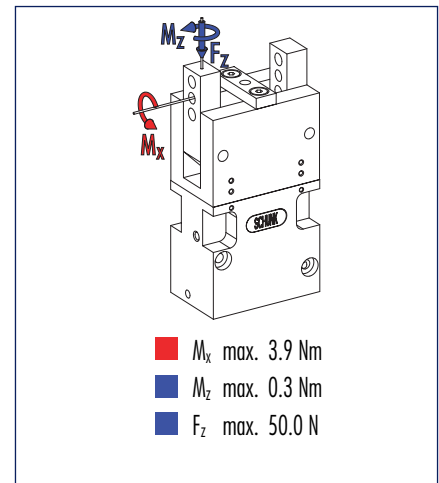
Closing and opening times are purely the times that the base jaws or fingers are in motion. Valve switching times, hose filling times or PLC reaction times are not included in the above times and must be taken into consideration when determining cycle times.



Gripping force, O.D. gripping



Finger load



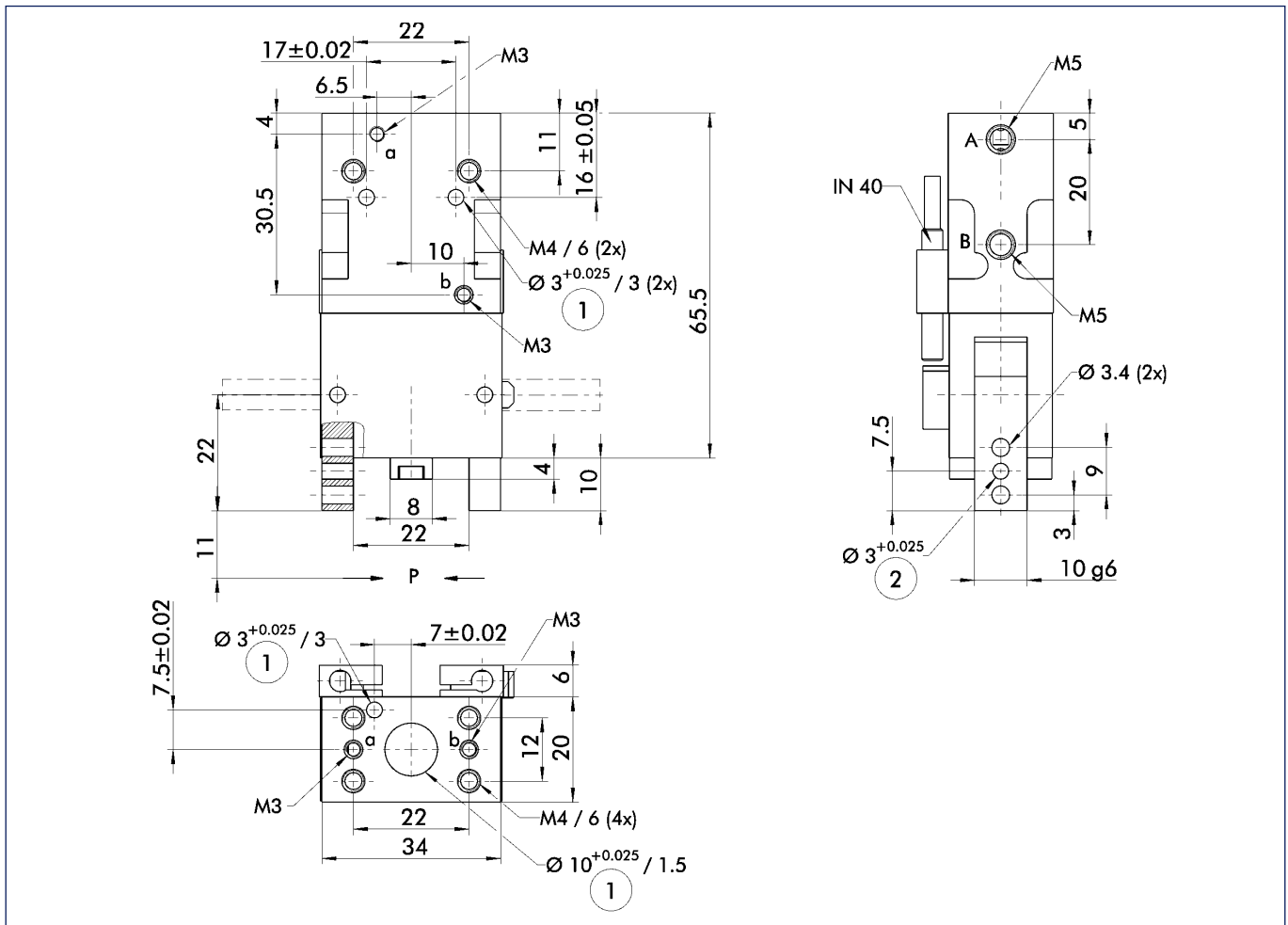
① Moments and forces apply per base jaw and may occur simultaneously. If the max. permitted finger weight is exceeded, it is imperative to throttle the air pressure so that the jaw movement occurs without any hitting or bouncing. Service life may be reduced.

Technical data

Description		GWB 34
	ID	0307135
Opening angle per jaw	[°]	90.0
Opening angle per jaw up to	[°]	2.0
Closing moment	[Nm]	2.112
Closing moment ensured by spring	[Nm]	0.5
Weight	[kg]	0.14
Recommended workpiece weight	[kg]	0.3
Air consumption per double stroke	[cm ³]	4.5
Nominal pressure	[bar]	6.0
Minimum pressure	[bar]	4.0
Maximum pressure	[bar]	6.5
Closing time	[s]	0.3
Opening time	[s]	0.4
Max. permitted finger length	[mm]	40.0
Max. permitted weight per finger	[kg]	0.07
IP class		20
Min. ambient temperature	[°C]	-10.0
Max. ambient temperature	[°C]	90.0
Repeat accuracy	[mm]	0.1

① The opening angle of the base jaws can be limited.

Main views

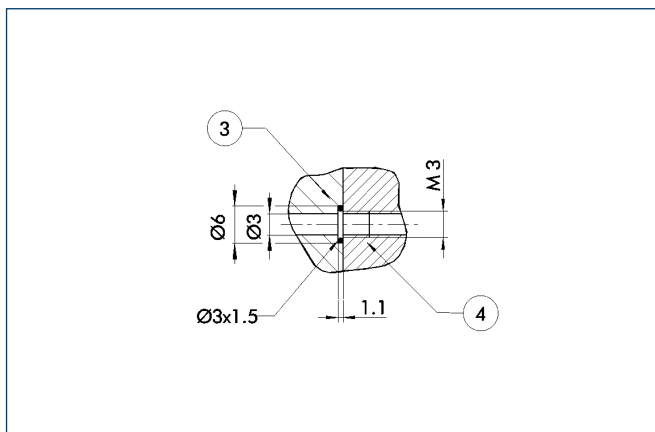


The drawing shows the gripper in the basic version with closed jaws, the dimensions do not include the options described below.

① The SDV-P pressure maintenance valve can also be used (see "Accessories" catalog section) for I.D. or O.D. gripping as an alternative or in addition to the spring-loaded, mechanical gripping force safety device.

- A,a Main/direct connection, gripper opening
- B,b Main/direct connection, gripper closing
- ① Gripper connection
- ② Finger connection

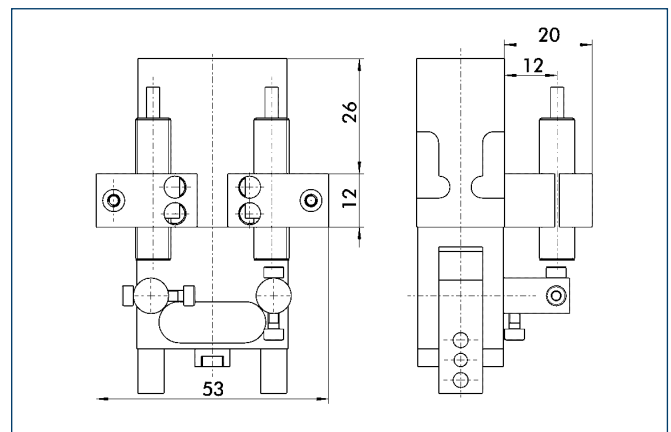
Hose-free direct connection



- ③ Adapter
- ④ Gripper

The direct connection is used for supplying compressed air to the gripper without hoses. Instead, the pressure medium is fed through bore-holes in the mounting plate.

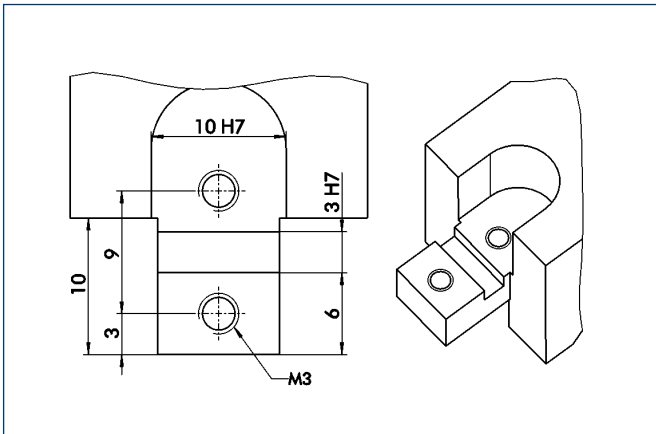
Mounting kit for M8/M12 proximity switches



The mounting kit consists of 2 brackets, 2 intermediate sleeves and small components. The proximity switches must be ordered separately.

Description	ID
HG-GWB 34	0300740

Finger design

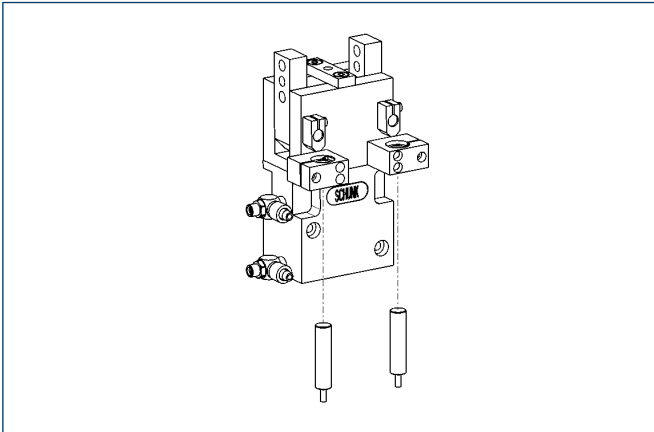


Suggested connection dimensions for gripper fingers



You can find more detailed information and individual parts of the above-mentioned accessories in the "Accessories" catalog section.

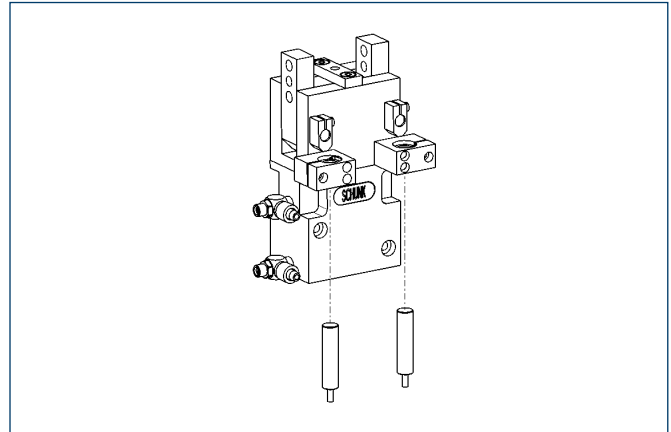
Sensor system



End position monitoring:
Inductive proximity switches, for direct mounting

Description	ID	Recommended product
IN 40-S-M12	0301574	
IN 40-S-M5-NPN	0301492	
IN 40-S-M5-PNP	0301491	
IN 40-S-M8	0301474	•
INK 40-S	0301555	

① Two sensors (NO contacts) are required for each gripper, plus extension cables as an option.



End position monitoring:
Inductive proximity switches, mounted with mounting kit

Description	ID	Recommended product
HG-GWB 34	0300740	
IN 120-S-M12	0301592	
IN 80-S-M12	0301578	
IN 80-S-M8	0301478	•
IN-C 80-S-M8	0301475	
INK 120-S	0301562	
INK 80-S	0301550	
INK 80-SL	0301579	

① Two sensors (NO contacts) are required for each gripper, plus extension cables as an option.

Extension cables for proximity switches/magnetic switches

Description	ID
KA BG05-L 3P-0300	0301652
KA BG08-L 3P-0300-PNP	0301622
KA BW05-L 3P-0300	0301650
KA BW08-L 3P-0300-PNP	0301594
KA BW08-L 3P-0500-PNP	0301502
KA BW12-L 3P-0300-PNP	0301503
KA BW12-L 3P-0500-PNP	0301507
KV BW08-SG08 3P-0030-PNP	0301495
KV BW08-SG08 3P-0100-PNP	0301496
KV BW08-SG08 3P-0200-PNP	0301497
KV BW12-SG12 3P-0030-PNP	0301595
KV BW12-SG12 3P-0100-PNP	0301596
KV BW12-SG12 3P-0200-PNP	0301597

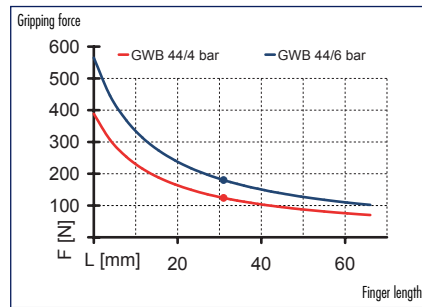
① Please note the minimum permitted bending radii for the sensor cables, which are generally 35 mm.



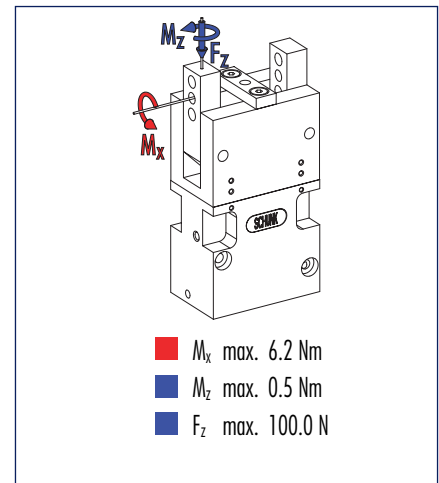
You can find more detailed information and individual parts of the above-mentioned accessories in the "Accessories" catalog section.



Gripping force, O.D. gripping



Finger load



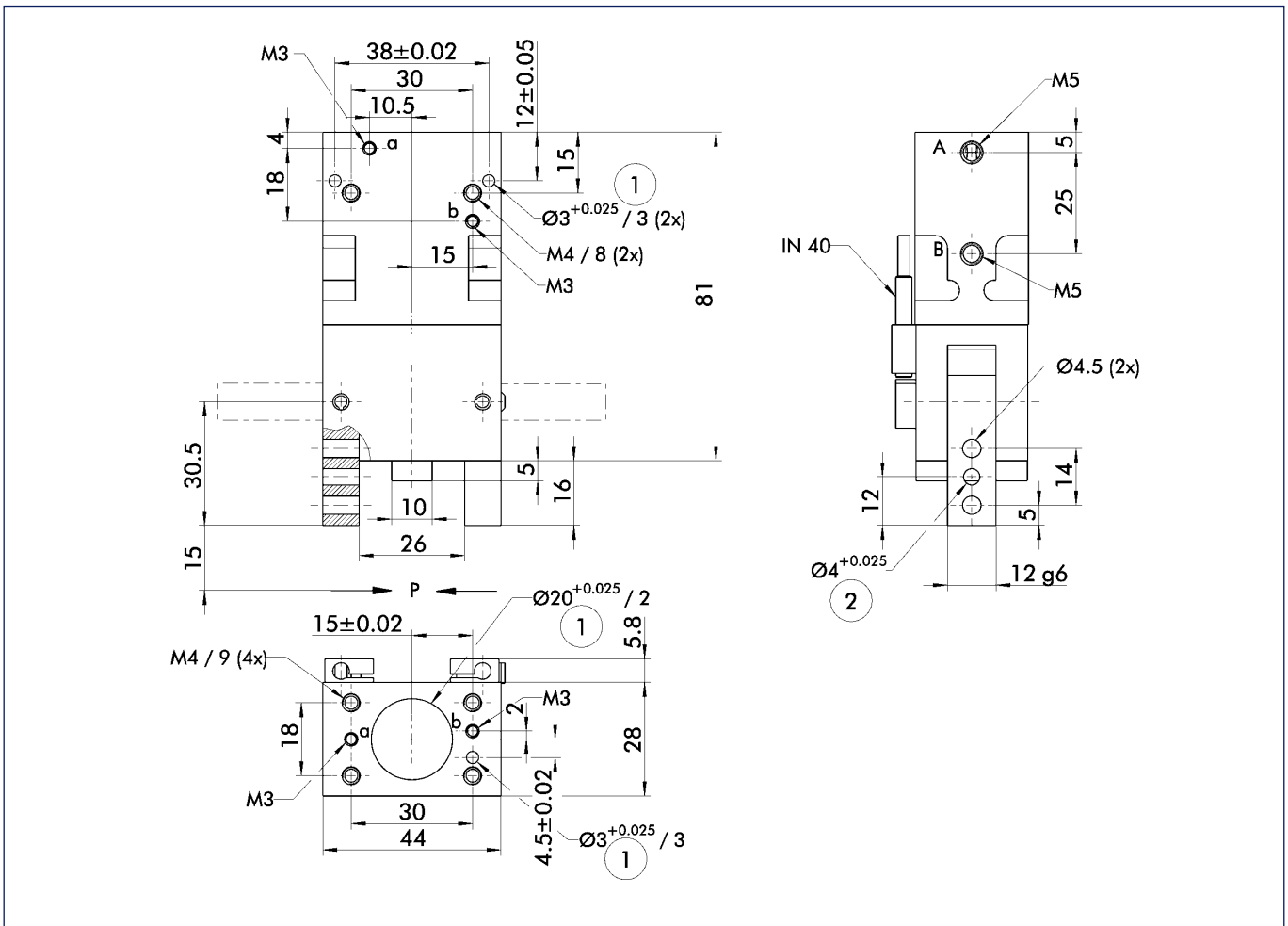
ⓘ Moments and forces apply per base jaw and may occur simultaneously. If the max. permitted finger weight is exceeded, it is imperative to throttle the air pressure so that the jaw movement occurs without any hitting or bouncing. Service life may be reduced.

Technical data

Description		GWB 44
	ID	0307136
Opening angle per jaw	[°]	90.0
Opening angle per jaw up to	[°]	2.0
Closing moment	[Nm]	8.19
Closing moment ensured by spring	[Nm]	1.8
Weight	[kg]	0.34
Recommended workpiece weight	[kg]	0.9
Air consumption per double stroke	[cm ³]	16.0
Nominal pressure	[bar]	6.0
Minimum pressure	[bar]	4.0
Maximum pressure	[bar]	6.5
Closing time	[s]	0.4
Opening time	[s]	0.5
Max. permitted finger length	[mm]	50.0
Max. permitted weight per finger	[kg]	0.12
IP class		20
Min. ambient temperature	[°C]	-10.0
Max. ambient temperature	[°C]	90.0
Repeat accuracy	[mm]	0.1

ⓘ The opening angle of the base jaws can be limited.

Main views

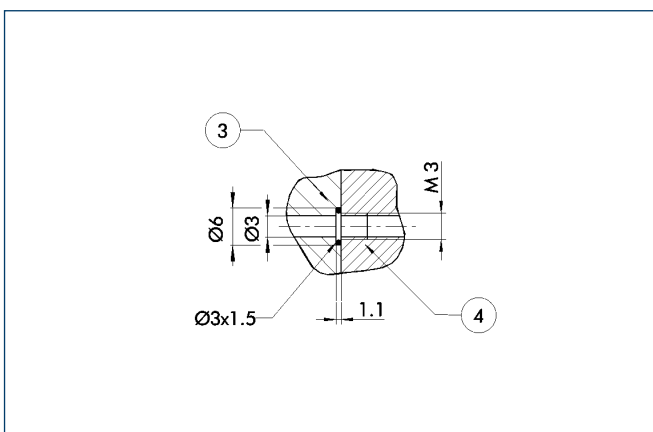


The drawing shows the gripper in the basic version with closed jaws, the dimensions do not include the options described below.

- A,a Main/direct connection, gripper opening
- B,b Main/direct connection, gripper closing
- ① Gripper connection
- ② Finger connection

① The SDV-P pressure maintenance valve can also be used (see "Accessories" catalog section) for I.D. or O.D. gripping as an alternative or in addition to the spring-loaded, mechanical gripping force safety device.

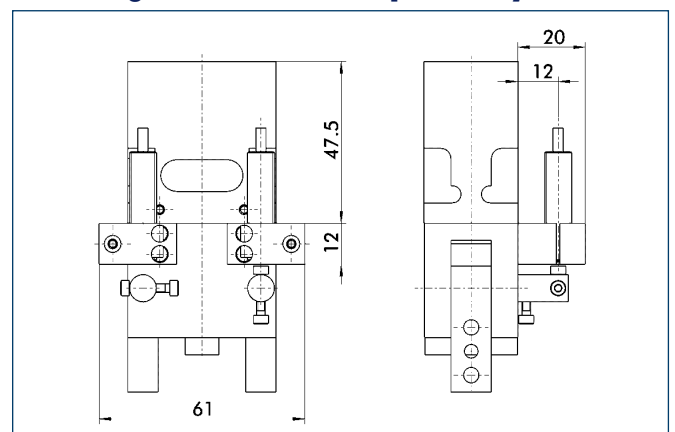
Hose-free direct connection



- ③ Adapter
- ④ Gripper

The direct connection is used for supplying compressed air to the gripper without hoses. Instead, the pressure medium is fed through bore-holes in the mounting plate.

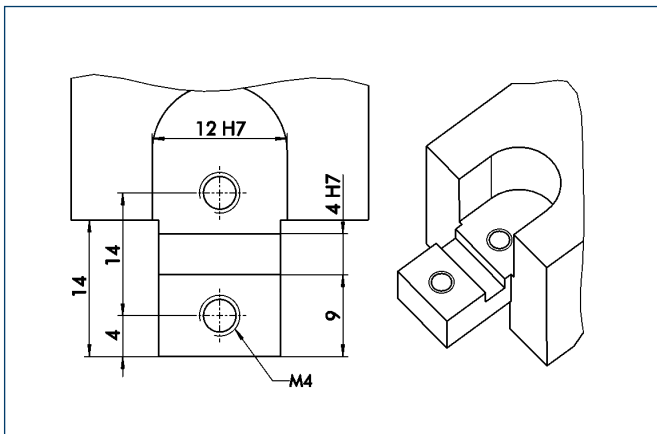
Mounting kit for M8/M12 proximity switches



The mounting kit consists of 2 brackets, 2 intermediate sleeves and small components. The proximity switches must be ordered separately.

Description	ID
HG-GWB 44	0300741

Finger design

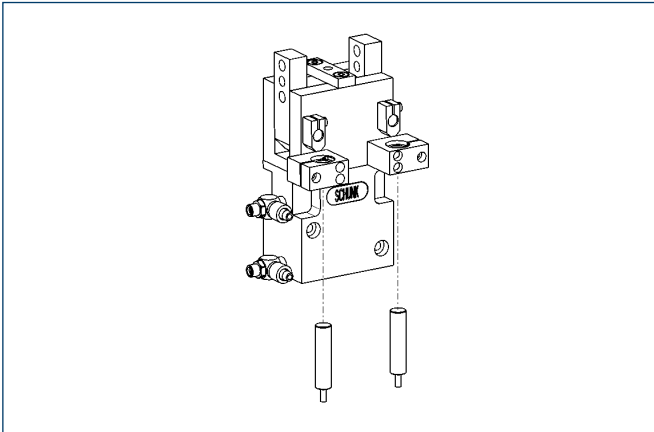


Suggested connection dimensions for gripper fingers



You can find more detailed information and individual parts of the above-mentioned accessories in the "Accessories" catalog section.

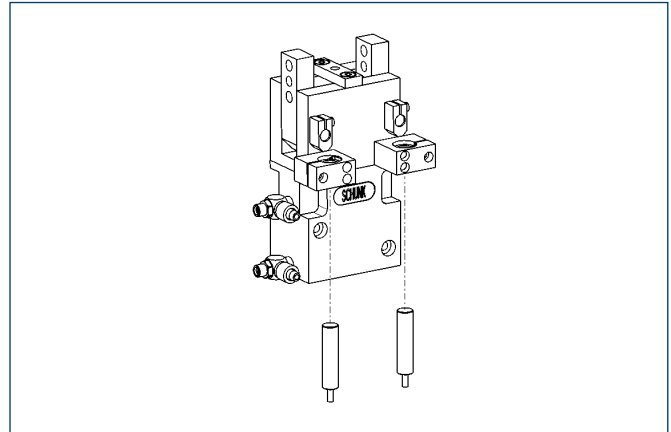
Sensor system



End position monitoring:
Inductive proximity switches, for direct mounting

Description	ID	Recommended product
IN 40-S-M12	0301574	
IN 40-S-M5-NPN	0301492	
IN 40-S-M5-PNP	0301491	
IN 40-S-M8	0301474	•
INK 40-S	0301555	

① Two sensors (NO contacts) are required for each gripper, plus extension cables as an option.



End position monitoring:
Inductive proximity switches, mounted with mounting kit

Description	ID	Recommended product
HG-GWB 44	0300741	
IN 120-S-M12	0301592	
IN 80-S-M12	0301578	
IN 80-S-M8	0301478	•
IN-C 80-S-M8	0301475	
INK 120-S	0301562	
INK 80-S	0301550	
INK 80-SL	0301579	

① Two sensors (NO contacts) are required for each gripper, plus extension cables as an option.

Extension cables for proximity switches/magnetic switches

Description	ID
KA BG05-L 3P-0300	0301652
KA BG08-L 3P-0300-PNP	0301622
KA BW05-L 3P-0300	0301650
KA BW08-L 3P-0300-PNP	0301594
KA BW08-L 3P-0500-PNP	0301502
KA BW12-L 3P-0300-PNP	0301503
KA BW12-L 3P-0500-PNP	0301507
KV BW08-SG08 3P-0030-PNP	0301495
KV BW08-SG08 3P-0100-PNP	0301496
KV BW08-SG08 3P-0200-PNP	0301497
KV BW12-SG12 3P-0030-PNP	0301595
KV BW12-SG12 3P-0100-PNP	0301596
KV BW12-SG12 3P-0200-PNP	0301597

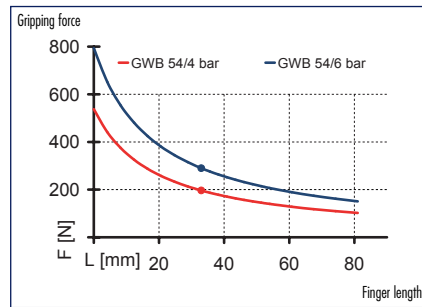
① Please note the minimum permitted bending radii for the sensor cables, which are generally 35 mm.



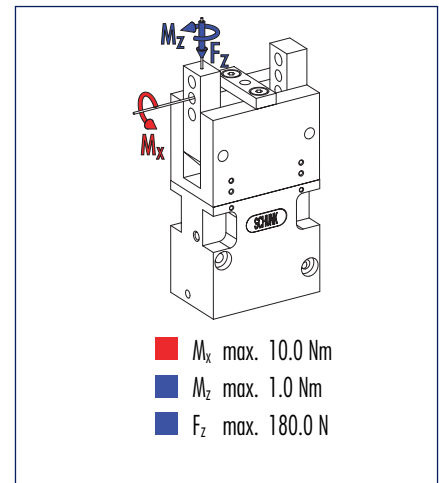
You can find more detailed information and individual parts of the above-mentioned accessories in the "Accessories" catalog section.



Gripping force, O.D. gripping



Finger load



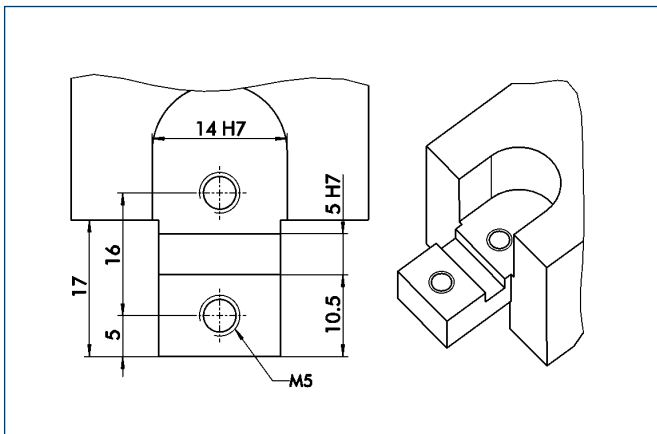
ⓘ Moments and forces apply per base jaw and may occur simultaneously. If the max. permitted finger weight is exceeded, it is imperative to throttle the air pressure so that the jaw movement occurs without any hitting or bouncing. Service life may be reduced.

Technical data

Description		GWB 54
	ID	0307137
Opening angle per jaw	[°]	90.0
Opening angle per jaw up to	[°]	2.0
Closing moment	[Nm]	15.08
Closing moment ensured by spring	[Nm]	2.9
Weight	[kg]	0.56
Recommended workpiece weight	[kg]	1.4
Air consumption per double stroke	[cm ³]	36.0
Nominal pressure	[bar]	6.0
Minimum pressure	[bar]	4.0
Maximum pressure	[bar]	6.5
Closing time	[s]	0.6
Opening time	[s]	0.7
Max. permitted finger length	[mm]	60.0
Max. permitted weight per finger	[kg]	0.2
IP class		20
Min. ambient temperature	[°C]	-10.0
Max. ambient temperature	[°C]	90.0
Repeat accuracy	[mm]	0.1

ⓘ The opening angle of the base jaws can be limited.

Finger design

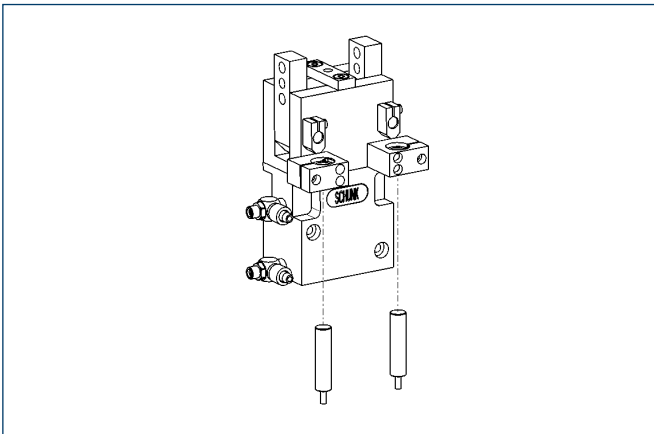


Suggested connection dimensions for gripper fingers



You can find more detailed information and individual parts of the above-mentioned accessories in the "Accessories" catalog section.

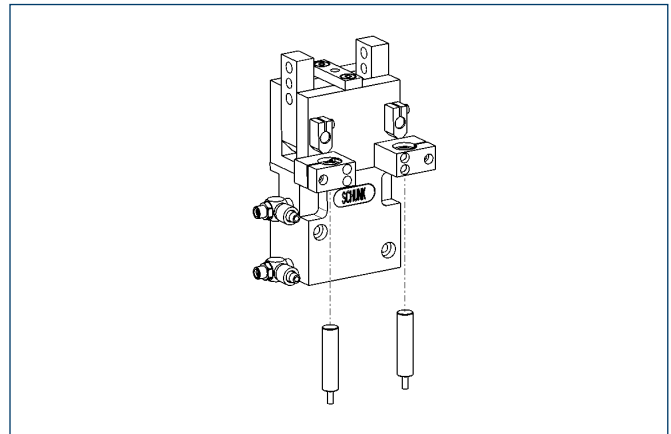
Sensor system



End position monitoring:
Inductive proximity switches, for direct mounting

Description	ID	Recommended product
IN 40-S-M12	0301574	
IN 40-S-M5-NPN	0301492	
IN 40-S-M5-PNP	0301491	
IN 40-S-M8	0301474	•
INK 40-S	0301555	

① Two sensors (NO contacts) are required for each gripper, plus extension cables as an option.



End position monitoring:
Inductive proximity switches, mounted with mounting kit

Description	ID	Recommended product
HG-GWB 54-80	0300742	
IN 120-S-M12	0301592	
IN 80-S-M12	0301578	
IN 80-S-M8	0301478	•
IN-C 80-S-M8	0301475	
INK 120-S	0301562	
INK 80-S	0301550	
INK 80-SL	0301579	

① Two sensors (NO contacts) are required for each gripper, plus extension cables as an option.

Extension cables for proximity switches/magnetic switches

Description	ID
KA BG05-L 3P-0300	0301652
KA BG08-L 3P-0300-PNP	0301622
KA BW05-L 3P-0300	0301650
KA BW08-L 3P-0300-PNP	0301594
KA BW08-L 3P-0500-PNP	0301502
KA BW12-L 3P-0300-PNP	0301503
KA BW12-L 3P-0500-PNP	0301507
KV BW08-SG08 3P-0030-PNP	0301495
KV BW08-SG08 3P-0100-PNP	0301496
KV BW08-SG08 3P-0200-PNP	0301497
KV BW12-SG12 3P-0030-PNP	0301595
KV BW12-SG12 3P-0100-PNP	0301596
KV BW12-SG12 3P-0200-PNP	0301597

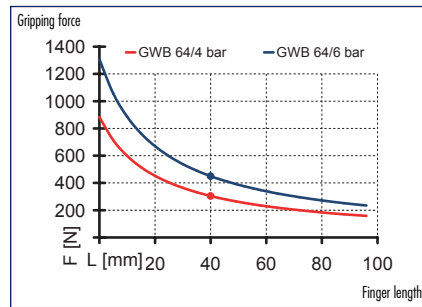
① Please note the minimum permitted bending radii for the sensor cables, which are generally 35 mm.



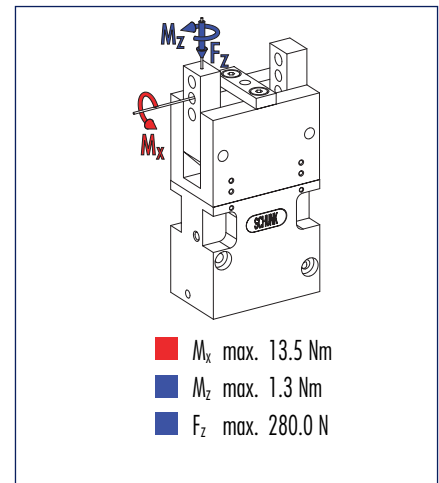
You can find more detailed information and individual parts of the above-mentioned accessories in the "Accessories" catalog section.



Gripping force, O.D. gripping



Finger load



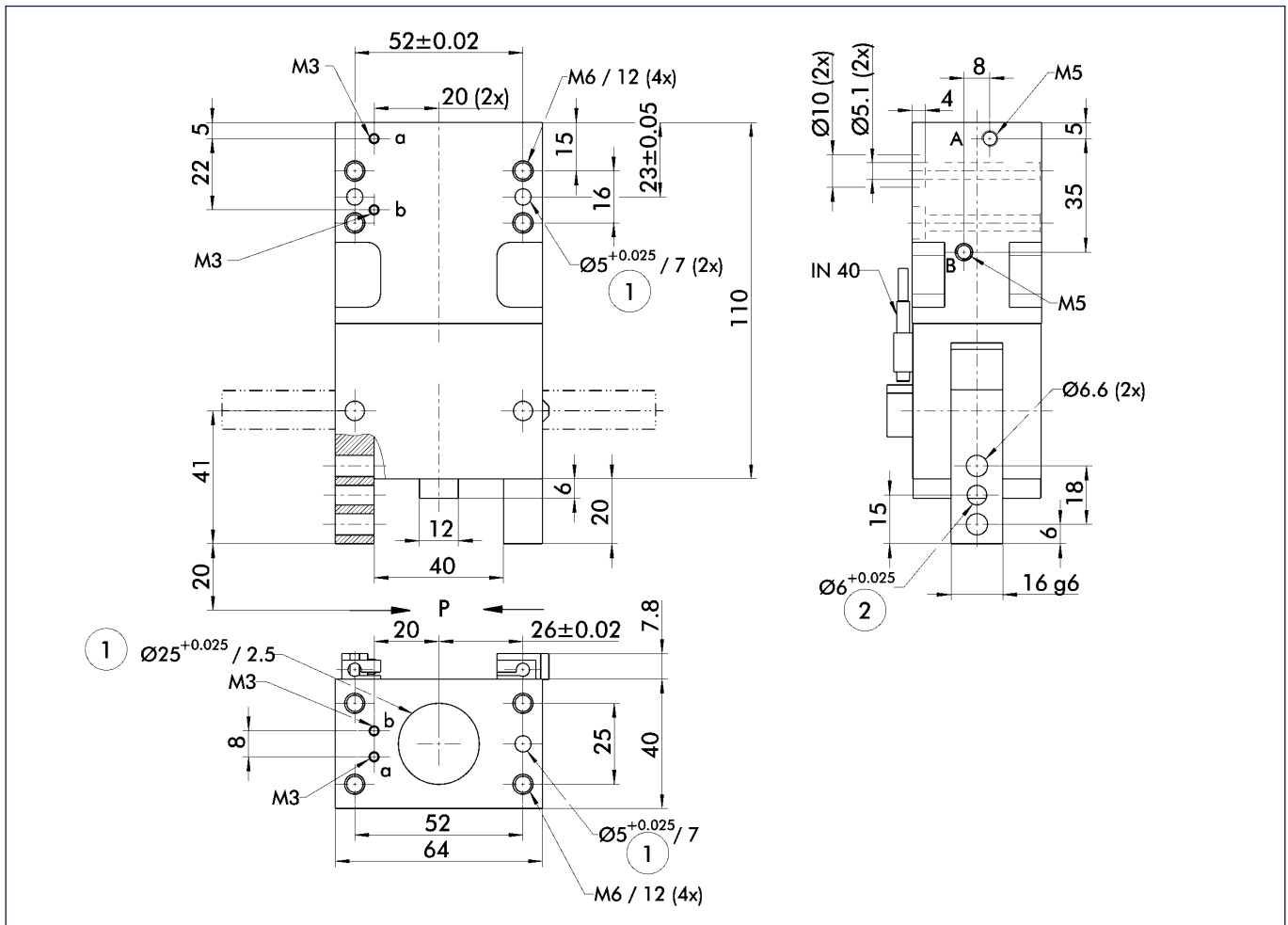
ⓘ Moments and forces apply per base jaw and may occur simultaneously. If the max. permitted finger weight is exceeded, it is imperative to throttle the air pressure so that the jaw movement occurs without any hitting or bouncing. Service life may be reduced.

Technical data

Description		GWB 64
	ID	0307138
Opening angle per jaw	[°]	90.0
Opening angle per jaw up to	[°]	2.0
Closing moment	[Nm]	27.45
Closing moment ensured by spring	[Nm]	5.2
Weight	[kg]	0.85
Recommended workpiece weight	[kg]	2.2
Air consumption per double stroke	[cm ³]	57.0
Nominal pressure	[bar]	6.0
Minimum pressure	[bar]	4.0
Maximum pressure	[bar]	6.5
Closing time	[s]	0.6
Opening time	[s]	0.7
Max. permitted finger length	[mm]	80.0
Max. permitted weight per finger	[kg]	0.32
IP class		20
Min. ambient temperature	[°C]	-10.0
Max. ambient temperature	[°C]	90.0
Repeat accuracy	[mm]	0.1

ⓘ The opening angle of the base jaws can be limited.

Main views

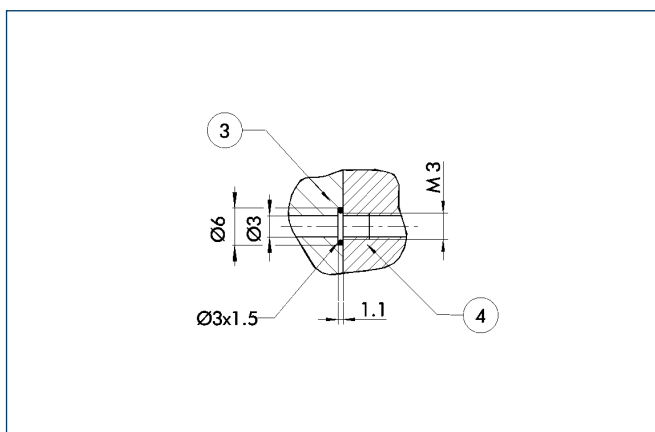


The drawing shows the gripper in the basic version with closed jaws, the dimensions do not include the options described below.

- A,a Main/direct connection, gripper opening
- B,b Main/direct connection, gripper closing
- ① Gripper connection
- ② Finger connection

① The SDV-P pressure maintenance valve can also be used (see "Accessories" catalog section) for I.D. or O.D. gripping as an alternative or in addition to the spring-loaded, mechanical gripping force safety device.

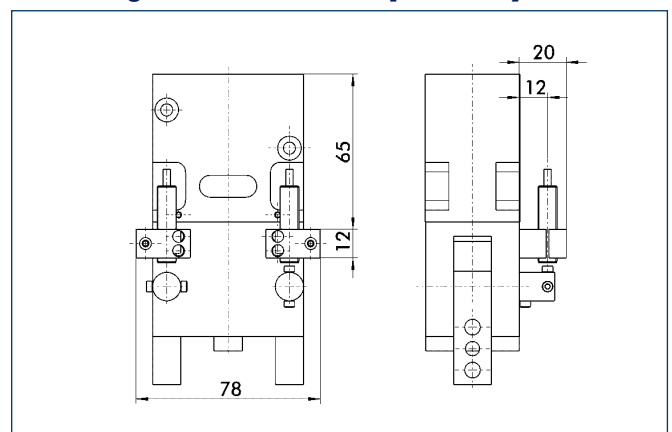
Hose-free direct connection



- ③ Adapter
- ④ Gripper

The direct connection is used for supplying compressed air to the gripper without hoses. Instead, the pressure medium is fed through bore-holes in the mounting plate.

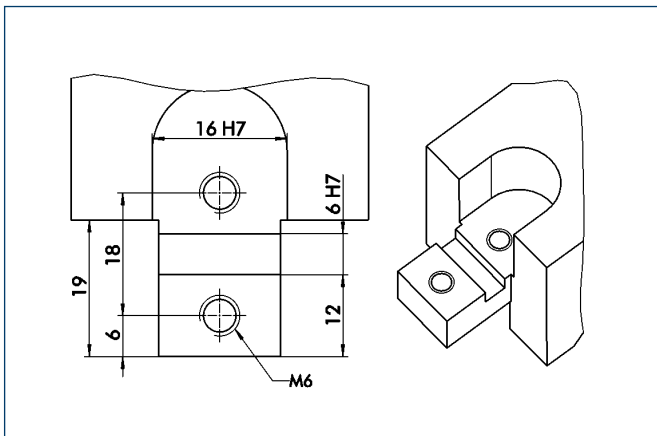
Mounting kit for M8/M12 proximity switches



The mounting kit consists of 2 brackets, 2 intermediate sleeves and small components. The proximity switches must be ordered separately.

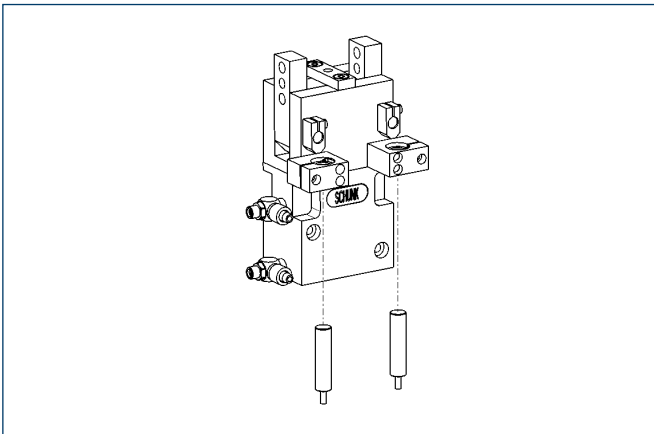
Description	ID
HG-GWB 54-80	0300742

Finger design



Suggested connection dimensions for gripper fingers

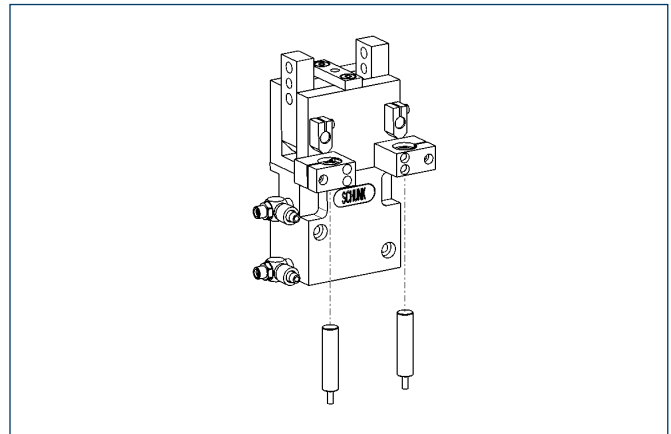
Sensor system



End position monitoring:
Inductive proximity switches, for direct mounting

Description	ID	Recommended product
IN 40-S-M12	0301574	
IN 40-S-M5-NPN	0301492	
IN 40-S-M5-PNP	0301491	
IN 40-S-M8	0301474	•
INK 40-S	0301555	

① Two sensors (NO contacts) are required for each gripper, plus extension cables as an option.



End position monitoring:
Inductive proximity switches, mounted with mounting kit

Description	ID	Recommended product
HG-GWB 54-80	0300742	
IN 120-S-M12	0301592	
IN 80-S-M12	0301578	
IN 80-S-M8	0301478	•
IN-C 80-S-M8	0301475	
INK 120-S	0301562	
INK 80-S	0301550	
INK 80-SL	0301579	

① Two sensors (NO contacts) are required for each gripper, plus extension cables as an option.

Extension cables for proximity switches/magnetic switches

Description	ID
KA BG05-L 3P-0300	0301652
KA BG08-L 3P-0300-PNP	0301622
KA BW05-L 3P-0300	0301650
KA BW08-L 3P-0300-PNP	0301594
KA BW08-L 3P-0500-PNP	0301502
KA BW12-L 3P-0300-PNP	0301503
KA BW12-L 3P-0500-PNP	0301507
KV BW08-SG08 3P-0030-PNP	0301495
KV BW08-SG08 3P-0100-PNP	0301496
KV BW08-SG08 3P-0200-PNP	0301497
KV BW12-SG12 3P-0030-PNP	0301595
KV BW12-SG12 3P-0100-PNP	0301596
KV BW12-SG12 3P-0200-PNP	0301597

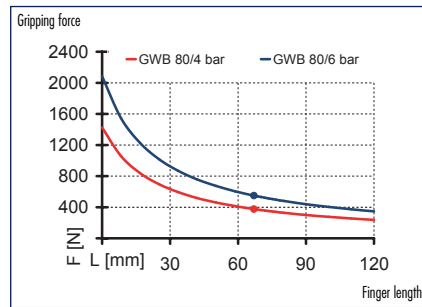
① Please note the minimum permitted bending radii for the sensor cables, which are generally 35 mm.



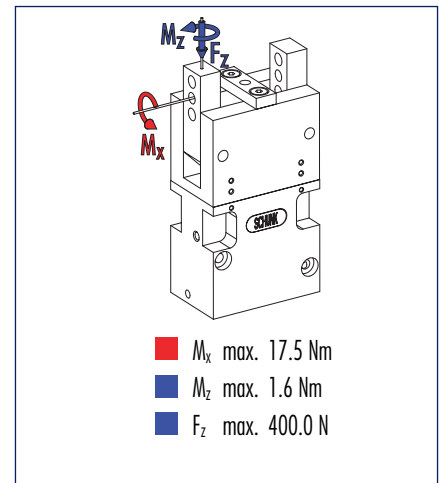
You can find more detailed information and individual parts of the above-mentioned accessories in the "Accessories" catalog section.



Gripping force, O.D. gripping



Finger load



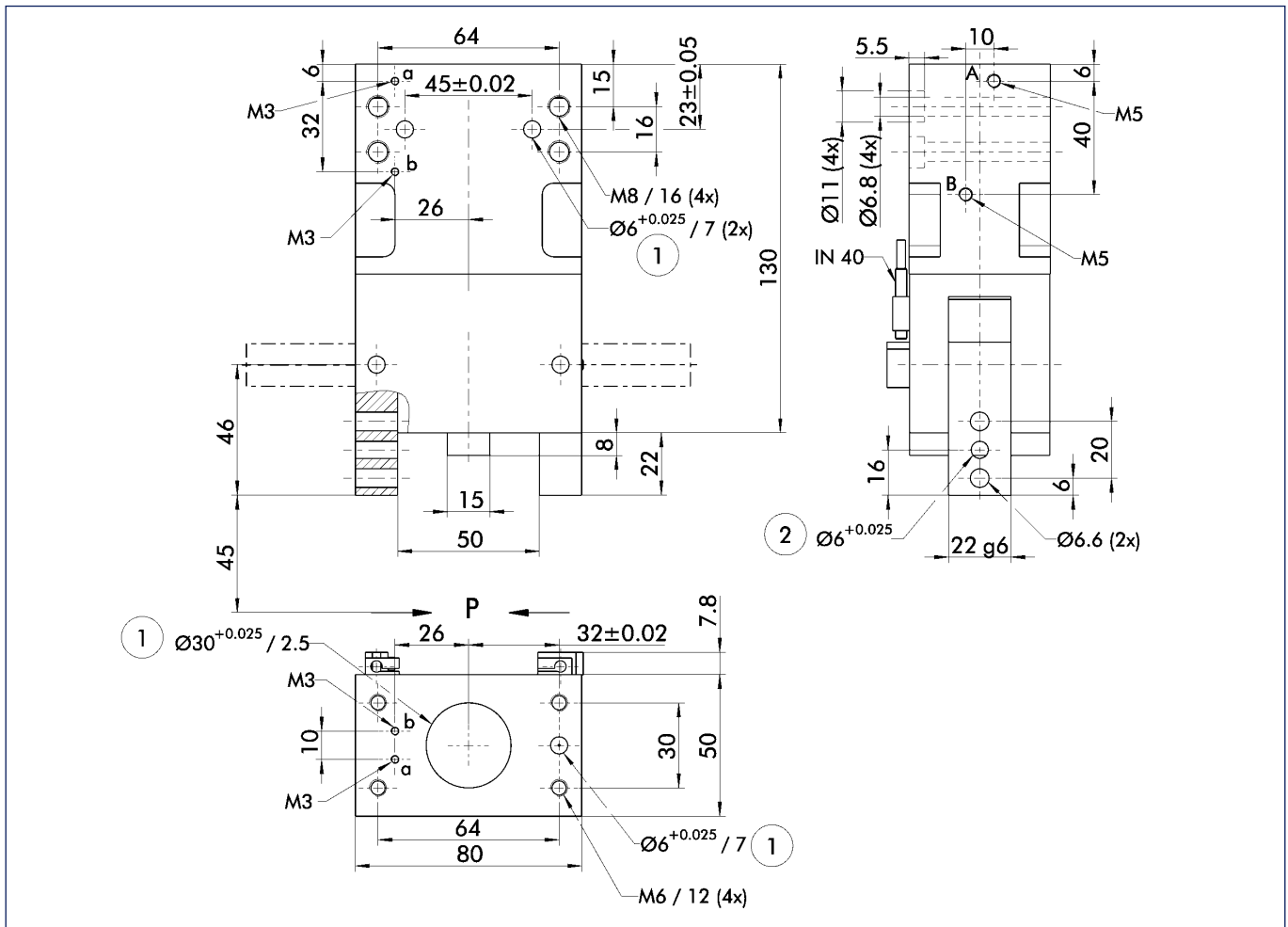
ⓘ Moments and forces apply per base jaw and may occur simultaneously. If the max. permitted finger weight is exceeded, it is imperative to throttle the air pressure so that the jaw movement occurs without any hitting or bouncing. Service life may be reduced.

Technical data

Description	GWB 80	
ID	0307139	
Opening angle per jaw	[°]	90.0
Opening angle per jaw up to	[°]	2.0
Closing moment	[Nm]	50.0
Closing moment ensured by spring	[Nm]	10.5
Weight	[kg]	1.6
Recommended workpiece weight	[kg]	2.7
Air consumption per double stroke	[cm ³]	110.0
Nominal pressure	[bar]	6.0
Minimum pressure	[bar]	4.0
Maximum pressure	[bar]	6.5
Closing time	[s]	0.7
Opening time	[s]	0.8
Max. permitted finger length	[mm]	100.0
Max. permitted weight per finger	[kg]	0.6
IP class		20
Min. ambient temperature	[°C]	-10.0
Max. ambient temperature	[°C]	90.0
Repeat accuracy	[mm]	0.1

ⓘ The opening angle of the base jaws can be limited.

Main views

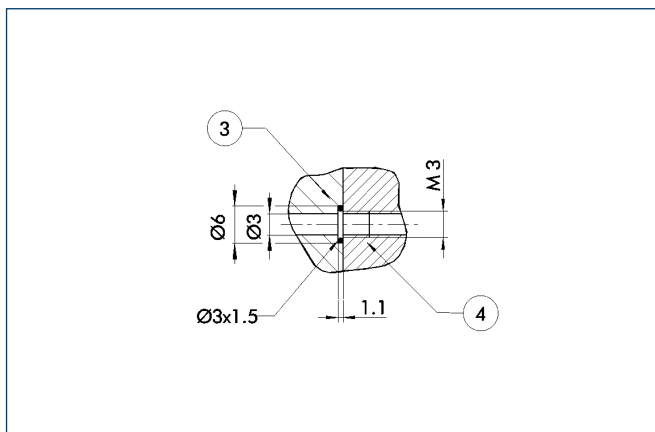


The drawing shows the gripper in the basic version with closed jaws, the dimensions do not include the options described below.

- A,a Main/direct connection, gripper opening
- B,b Main/direct connection, gripper closing
- ① Gripper connection
- ② Finger connection

① The SDV-P pressure maintenance valve can also be used (see "Accessories" catalog section) for I.D. or O.D. gripping as an alternative or in addition to the spring-loaded, mechanical gripping force safety device.

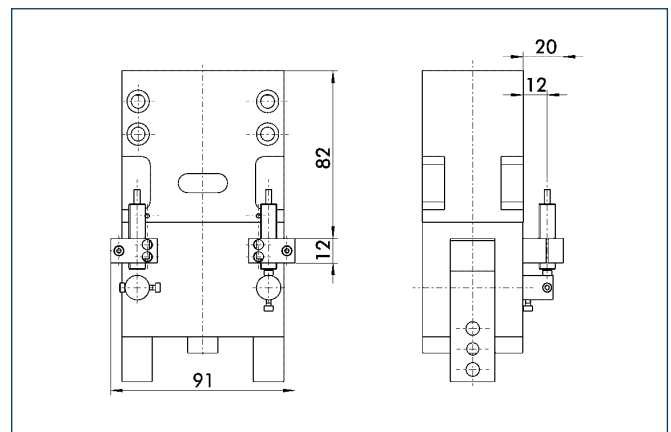
Hose-free direct connection



- ③ Adapter
- ④ Gripper

The direct connection is used for supplying compressed air to the gripper without hoses. Instead, the pressure medium is fed through bore-holes in the mounting plate.

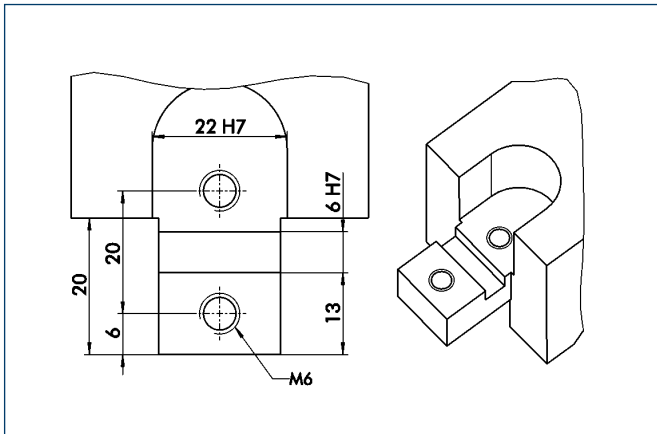
Mounting kit for M8/M12 proximity switches



The mounting kit consists of 2 brackets, 2 intermediate sleeves and small components. The proximity switches must be ordered separately.

Description	ID
HG-GWB 54-80	0300742

Finger design

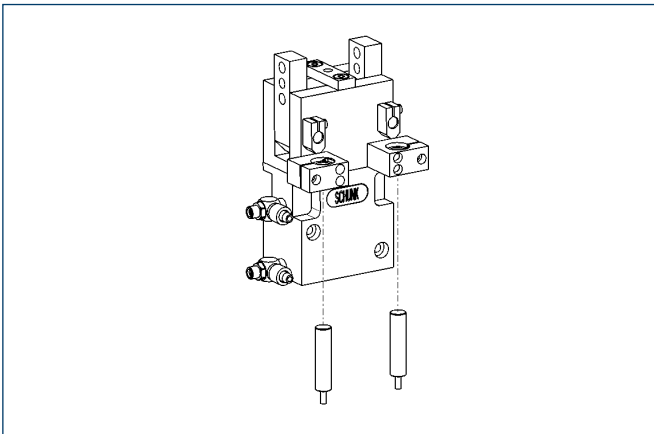


Suggested connection dimensions for gripper fingers



You can find more detailed information and individual parts of the above-mentioned accessories in the "Accessories" catalog section.

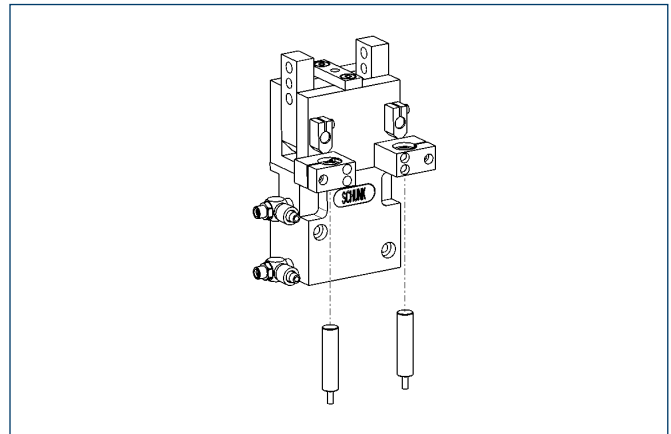
Sensor system



End position monitoring:
Inductive proximity switches, for direct mounting

Description	ID	Recommended product
IN 40-S-M12	0301574	
IN 40-S-M5-NPN	0301492	
IN 40-S-M5-PNP	0301491	
IN 40-S-M8	0301474	•
INK 40-S	0301555	

① Two sensors (NO contacts) are required for each gripper, plus extension cables as an option.



End position monitoring:
Inductive proximity switches, mounted with mounting kit

Description	ID	Recommended product
HG-GWB 54-80	0300742	
IN 120-S-M12	0301592	
IN 80-S-M12	0301578	
IN 80-S-M8	0301478	•
IN-C 80-S-M8	0301475	
INK 120-S	0301562	
INK 80-S	0301550	
INK 80-SL	0301579	

① Two sensors (NO contacts) are required for each gripper, plus extension cables as an option.

Extension cables for proximity switches/magnetic switches

Description	ID
KA BG05-L 3P-0300	0301652
KA BG08-L 3P-0300-PNP	0301622
KA BW05-L 3P-0300	0301650
KA BW08-L 3P-0300-PNP	0301594
KA BW08-L 3P-0500-PNP	0301502
KA BW12-L 3P-0300-PNP	0301503
KA BW12-L 3P-0500-PNP	0301507
KV BW08-SG08 3P-0030-PNP	0301495
KV BW08-SG08 3P-0100-PNP	0301496
KV BW08-SG08 3P-0200-PNP	0301497
KV BW12-SG12 3P-0030-PNP	0301595
KV BW12-SG12 3P-0100-PNP	0301596
KV BW12-SG12 3P-0200-PNP	0301597

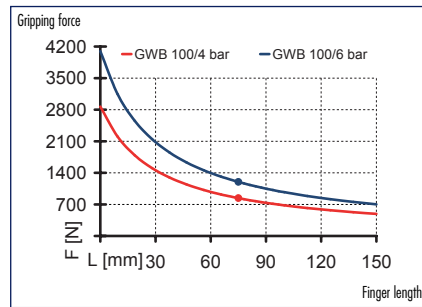
① Please note the minimum permitted bending radii for the sensor cables, which are generally 35 mm.



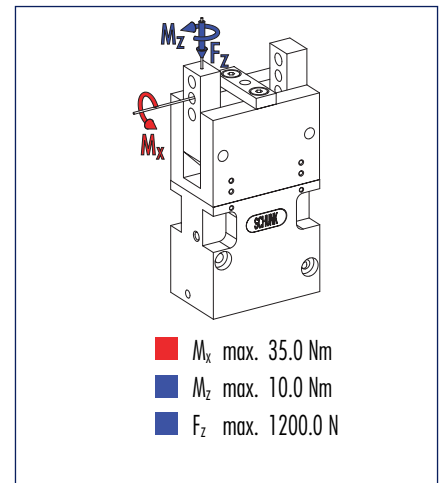
You can find more detailed information and individual parts of the above-mentioned accessories in the "Accessories" catalog section.



Gripping force, O.D. gripping



Finger load



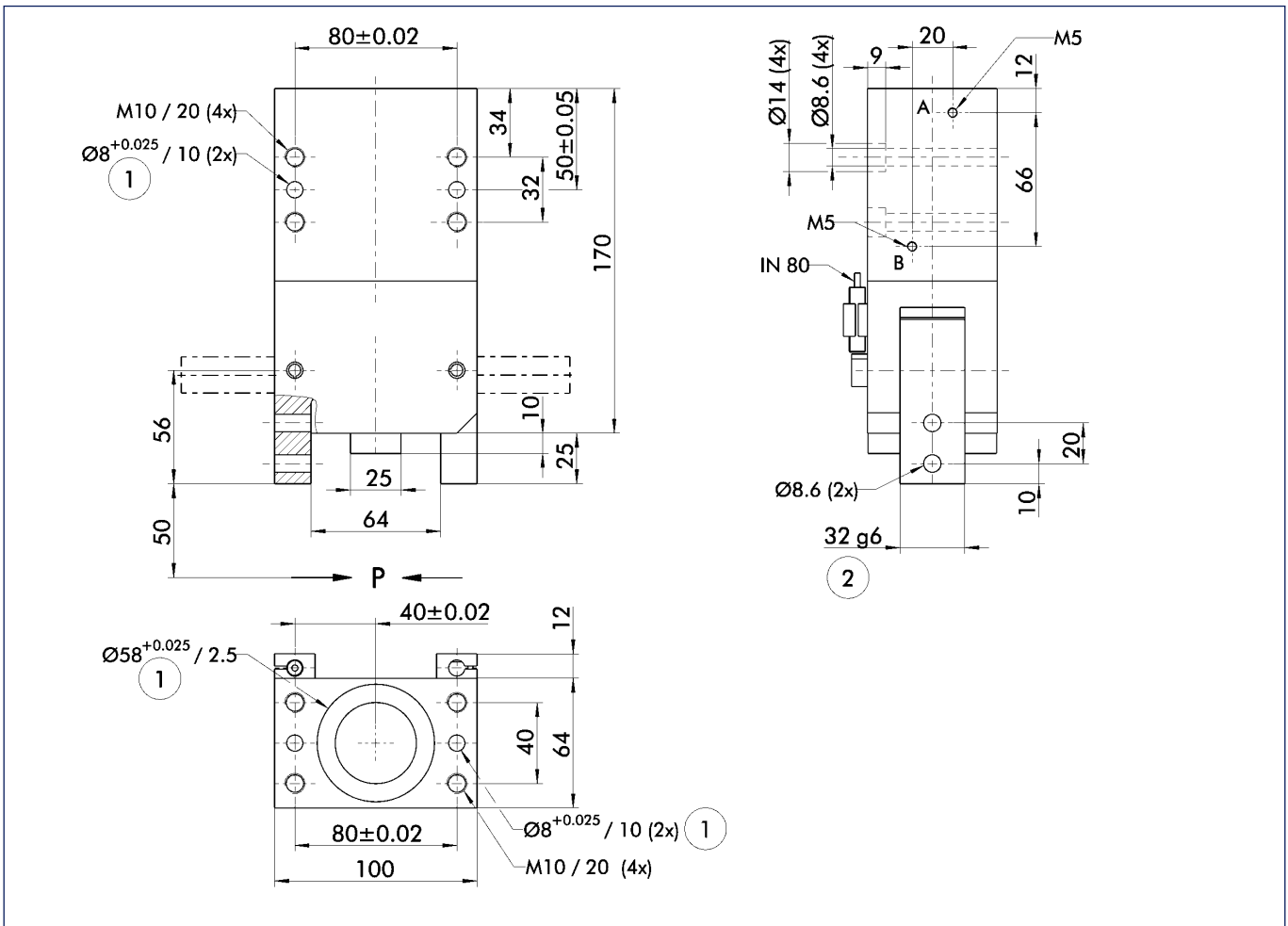
ⓘ Moments and forces apply per base jaw and may occur simultaneously. If the max. permitted finger weight is exceeded, it is imperative to throttle the air pressure so that the jaw movement occurs without any hitting or bouncing. Service life may be reduced.

Technical data

Description	GWB 100	
ID	0307140	
Opening angle per jaw	[°]	90.0
Opening angle per jaw up to	[°]	2.0
Closing moment	[Nm]	127.0
Closing moment ensured by spring	[Nm]	31.8
Weight	[kg]	3.5
Recommended workpiece weight	[kg]	6.0
Air consumption per double stroke	[cm ³]	217.0
Nominal pressure	[bar]	6.0
Minimum pressure	[bar]	4.0
Maximum pressure	[bar]	6.5
Closing time	[s]	0.55
Opening time	[s]	0.7
Max. permitted finger length	[mm]	125.0
Max. permitted weight per finger	[kg]	1.2
IP class		20
Min. ambient temperature	[°C]	-10.0
Max. ambient temperature	[°C]	90.0
Repeat accuracy	[mm]	0.1

ⓘ The opening angle of the base jaws can be limited.

Main views

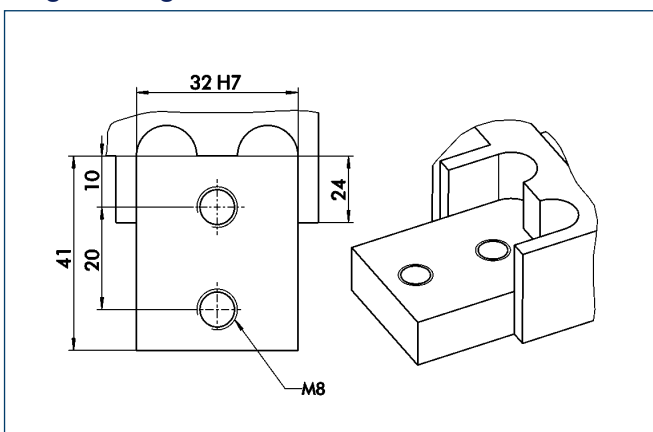


The drawing shows the gripper in the basic version with closed jaws, the dimensions do not include the options described below.

- A,a Main/direct connection, gripper opening
- B,b Main/direct connection, gripper closing
- ① Gripper connection
- ② Finger connection

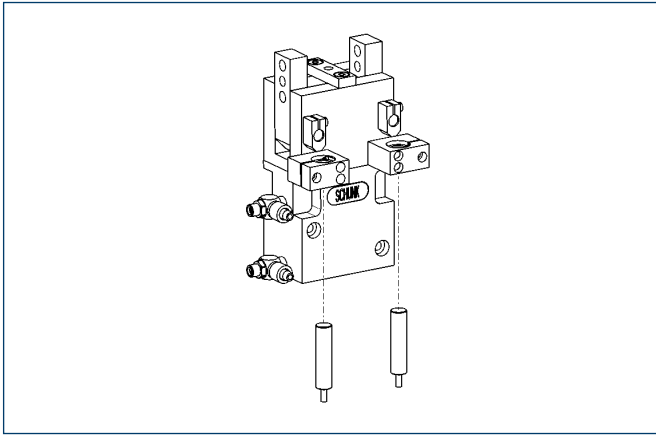
① The SDV-P pressure maintenance valve can also be used (see "Accessories" catalog section) for I.D. or O.D. gripping as an alternative or in addition to the spring-loaded, mechanical gripping force safety device.

Finger design



Suggested connection dimensions for gripper fingers

Sensor system



End position monitoring:

Inductive proximity switches, for direct mounting

Description	ID	Recommended product
IN 80-S-M12	0301578	
IN 80-S-M8	0301478	•
IN-C 80-S-M8	0301475	
INK 80-S	0301550	

① Two sensors (NO contacts) are required for each gripper, plus extension cables as an option.

Extension cables for proximity switches/magnetic switches

Description	ID
KA BG08-L 3P-0300-PNP	0301622
KA BW08-L 3P-0300-PNP	0301594
KA BW08-L 3P-0500-PNP	0301502
KA BW12-L 3P-0300-PNP	0301503
KA BW12-L 3P-0500-PNP	0301507
KV BW08-SG08 3P-0030-PNP	0301495
KV BW08-SG08 3P-0100-PNP	0301496
KV BW08-SG08 3P-0200-PNP	0301497
KV BW12-SG12 3P-0030-PNP	0301595
KV BW12-SG12 3P-0100-PNP	0301596
KV BW12-SG12 3P-0200-PNP	0301597

① Please note the minimum permitted bending radii for the sensor cables, which are generally 35 mm.



You can find more detailed information and individual parts of the above-mentioned accessories in the "Accessories" catalog section.