

Mounting Shanks SK · Zancos de montaje SK

DIN 69871 AD/B



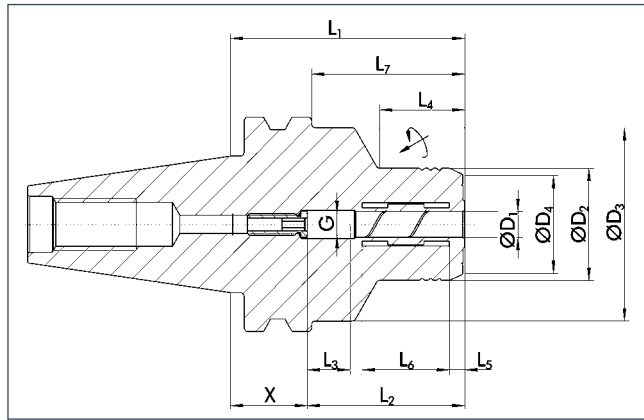
MOUNTING SHANKS SK ZANCOS DE MONTAJE SK

SK	Page/Página
SK 30	
TENDO	198
TRIBOS	199
SK 40	
TENDO	200
TRIBOS	205
SINO	207
CELSIO	209
SK 50	
TENDO	212
TRIBOS	215
SINO	216
CELSIO	217

SK

TENDO SDF-KS SK 30

short, slim design
with axial length adjustment



TENDO SDF-KS SK 30

corto, diseño delgado
con ajuste de la longitud axial



<math>< 0.003 \text{ mm}</math>



50000 min⁻¹



25000 min⁻¹



Technical data

Datos técnicos

D ₁ [mm]	ID	D ₂ [mm]	D ₃ [mm]	D ₄ [mm]	X [mm]	L ₁ [mm]	L ₂ [mm]	L ₃ [mm]	L ₄ [mm]	L ₅ [mm]	L ₆ [mm]	L ₇ [mm]	G	M _{min} [Nm]	m [kg]
6.0	0204931	26.0	45.0	23.0	18.0	55.0	37.0	10.0	20.0	3.6	20.5	55.0	M5	16.0	0.6
8.0	0204932	28.0	45.0	25.0	18.0	55.0	37.0	10.0	20.0	3.6	20.5	55.0	M6	23.0	0.6
10.0	0204933	30.0	45.0	27.0	14.0	55.0	41.0	10.0	21.0	3.6	25.5	55.0	M8x1	45.0	0.6
12.0	0204934	•	32.0	45.0	29.0	9.0	55.0	46.0	10.0	22.0	3.6	30.5	M10x1	90.0	0.6
16.0	0204935	•	38.0	45.0	35.0	41.0	90.0	49.0	10.0	50.0	3.6	35.0	M6	185.0	0.6
20.0	0204936	•	42.0	45.0	38.0	39.0	90.0	51.0	10.0	50.0	3.7	37.8	M6	330.0	0.6

- Additional sizes can be clamped with intermediate sleeves
- Can be supplied from stock

- Design suitable for MQL operations available on request
- Bore for data carrier as an option

- Se puede sujetar con casquillos intermedios, posibles dimensiones intermedias
- Posible suministro de existencias

- Diseño apto para operaciones MQL disponible a pedido
- Orificio para portador de datos como opción



Intermediate sleeves
see chapter accessories

Casquillos intermedios
consulte el capítulo sobre accesorios



Sleeve remover
see chapter accessories

Extractor de casquillos
consulte el capítulo sobre accesorios



Further accessories
see chapter accessories

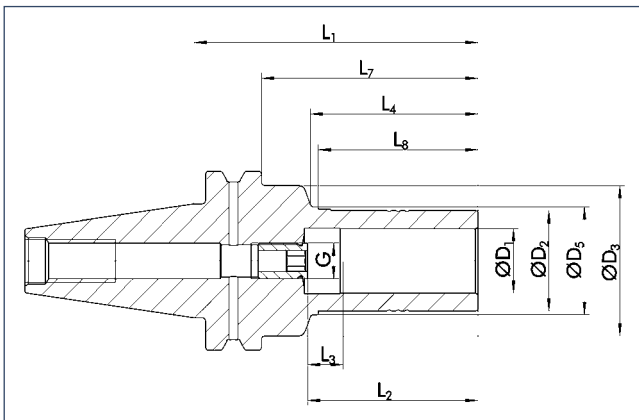
Accesorios adicionales
consulte el capítulo sobre accesorios

TRIBOS SPF-S SK 30

with axial length adjustment, similar to DIN 69871

TRIBOS SPF-S SK 30 rotacionalmente simétrico

con ajuste de la longitud axial, similar a DIN 69871



Technical data

Datos técnicos

D ₁ [mm]	ID		D ₂ [mm]	D ₃ [mm]	D ₅ [mm]	L ₁ [mm]	L ₂ [mm]	L ₃ [mm]	L ₄ [mm]	L ₇ [mm]	L ₈ [mm]	G	M _{min} [Nm]	m [kg]	SRE ID
6.0	25000325		10.0	42.0	13.0	90.0	37.0	10.0	57.0	71.0	35.0	M5	5.0	0.45	0201972
8.0	25000326		13.0	42.0	15.0	90.0	37.0	10.0	57.0	71.0	35.0	M6	12.0	0.45	0201973
10.0	25000338		16.0	42.0	18.0	80.0	42.0	10.0	47.0	61.0	40.0	M8x1	20.0	0.45	0201974
12.0	25000339	•	19.0	42.0	21.0	80.0	47.0	10.0	47.0	61.0	45.0	M8x1	30.0	0.62	0201975
14.0	☰														
16.0	25000340	•	25.0	42.0	27.0	80.0	48.0	10.0	47.0	61.0	45.0	M10x1	70.0	0.75	0201977
20.0	25000341	•	30.0	42.0	32.0	80.0	52.0	10.0	47.0	61.0	45.0	M10x1	150.0	0.78	0201981
25.0	25000566	•	35.0	42.0	37.0	80.0	55.0	10.0	42.0	61.0	40.0	M10x1	200.0	0.78	0201982

- ☰ Additional sizes can be clamped with intermediate sleeves
- Can be supplied from stock

- ☰ Para sujetar con casquillos intermedios
- Posible suministro de existencias

- 🔧 Design suitable for MQL operations available on request
- 📄 Bore for data carrier as an option

- 🔧 Diseño apto para operaciones MQL disponible a pedido
- 📄 Orificio para portador de datos como opción

- 📄 Optimal for light machine cutting – consider radial forces
Caution: For clamping diameter 25 mm please use reduction inserts for O.D. 35 mm.
Additional sizes and special designs available on request

- 📄 Óptimo para corte con máquinas ligeras; considera fuerzas radiales
Precaución: Para el diámetro de sujeción de 25 mm, use insertos de reducción para el diámetro exterior de 35 mm.
Tamaños adicionales y diseños especiales disponibles a pedido



Tool extensions
see chapter extensions

Extensiones de herramientas
consulte el capítulo sobre extensiones



Clamping devices
see chapter accessories

Dispositivos de sujeción
consulte el capítulo sobre accesorios



Reduction inserts
see chapter accessories

Insertos de reducción
consulte el capítulo sobre accesorios

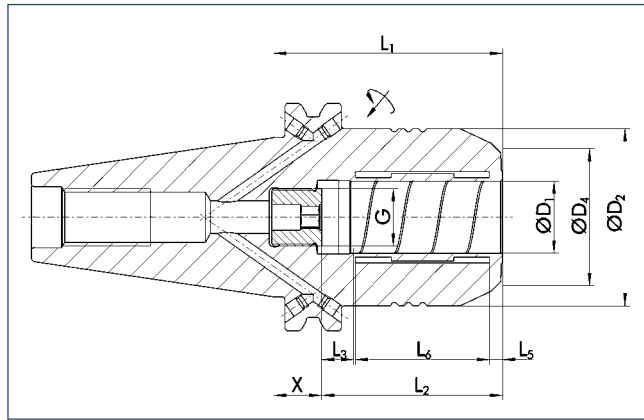


Length measuring devices
see chapter accessories

Disp. de medición de la longitud
consulte el capítulo sobre accesorios

TENDO SDF-E SK 40

short, rigid design
with axial length adjustment



TENDO SDF-E SK 40

corto, diseño rígido
con ajuste de la longitud axial



Technical data

Datos técnicos

D ₁ [mm]	ID	D ₂ [mm]	D ₄ [mm]	X [mm]	L ₁ [mm]	L ₂ [mm]	L ₃ [mm]	L ₅ [mm]	L ₆ [mm]	G	M _{min} [Nm]	m [kg]
6.0	≡											
8.0	≡											
10.0	≡											
12.0	≡											
14.0	≡											
16.0	≡											
20.0	0205416	•	49.5	39.0	13.5	64.5	51.0	10.0	3.7	37.8	M16x1	330.0 1.3

≡ Additional sizes can be clamped with intermediate sleeves
• Can be supplied from stock

☑ Design suitable for MQL operations available on request
☑ Bore for data carrier as an option

ℹ Bore on form B are sealed with set screws
Additional sizes and special designs available on request

≡ Para sujetar con casquillos intermedios
• Posible suministro de existencias

☑ Diseño apto para operaciones MQL disponible a pedido
☑ Orificio para portador de datos como opción

ℹ Orificios en forma B sellados con tornillos de fijación
Tamaños adicionales y diseños especiales disponibles a pedido



Intermediate sleeves

see chapter accessories

Casquillos intermedios

consulte el capítulo sobre accesorios



Sleeve remover

see chapter accessories

Extractor de casquillos

consulte el capítulo sobre accesorios



Further accessories

see chapter accessories

Accesorios adicionales

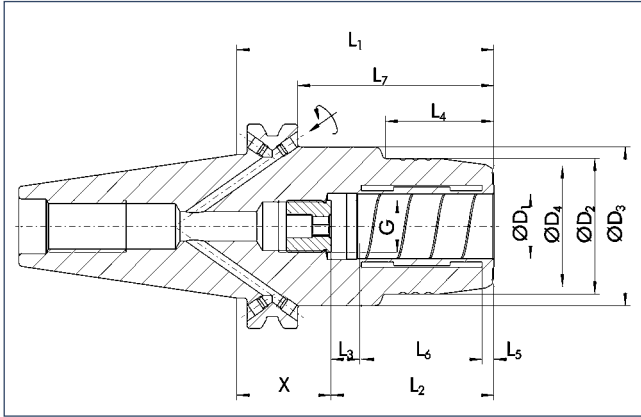
consulte el capítulo sobre accesorios

TENDO SDF-KS SK 40

short, slim design
with axial length adjustment

TENDO SDF-KS SK 40

corto, diseño delgado
con ajuste de la longitud axial



Technical data

Datos técnicos

D ₁ [mm]	ID		D ₂ [mm]	D ₃ [mm]	D ₄ [mm]	X [mm]	L ₁ [mm]	L ₂ [mm]	L ₃ [mm]	L ₄ [mm]	L ₅ [mm]	L ₆ [mm]	L ₇ [mm]	G	M _{min} [Nm]	m [kg]
1.0	≡															
2.0	≡															
3.0	≡															
4.0	≡															
5.0	≡															
6.0	0204261	•	26.0	49.5	22.0	43.5	80.5	37.0	10.0	29.5	3.6	20.5	61.5	M5	16.0	1.4
8.0	0204262	•	28.0	49.5	24.0	43.5	80.5	37.0	10.0	30.0	3.6	20.5	61.5	M6	23.0	1.4
10.0	0204263	•	30.0	49.5	26.0	39.5	80.5	41.0	10.0	31.0	3.6	25.5	61.5	M8x1	45.0	1.4
12.0	0204264	•	32.0	49.5	28.0	34.5	80.5	46.0	10.0	31.5	3.6	30.5	61.5	M10x1	90.0	1.4
14.0	≡															
16.0	0204265	•	38.0	49.5	34.0	31.5	80.5	49.0	10.0	33.0	3.6	35.0	61.5	M12x1	185.0	1.4
18.0	≡															
20.0	0204266	•	42.0	49.5	38.0	29.5	80.5	51.0	10.0	34.0	3.7	37.8	61.5	M16x1	330.0	1.4
25.0	0201740		55.0	66.0	53.0	23.5	80.5	57.0	10.0	22.0	4.2	42.3	61.5	M16x1	400.0	1.8
32.0	0204267	•	63.0	80.0	60.0	19.5	80.5	61.0	10.0	25.5	4.2	47.7	61.5	M16x1	650.0	2.0

≡ Additional sizes can be clamped with intermediate sleeves
• Can be supplied from stock

≡ Se puede sujetar con casquillos intermedios, posibles dimensiones intermedias
• Posible suministro de existencias

🔧 Design suitable for MQL operations available on request
🔧 Bore for data carrier as an option

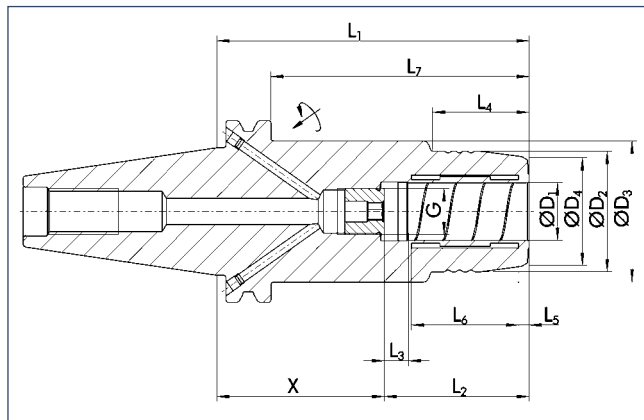
🔧 Diseño apto para operaciones MQL disponible a pedido
🔧 Orificio para portador de datos como opción

📄 Bores on form B are sealed with set screws
Additional sizes and special designs available on request

📄 Orificios en forma B sellados con tornillos de fijación
Tamaños adicionales y diseños especiales disponibles a pedido

TENDO SDF-LS SK 40

long, slim design
with axial length adjustment



TENDO SDF-LS SK 40

largo, diseño delgado
con ajuste de la longitud axial



< 0.003 mm



50000 min⁻¹



25000 min⁻¹



Technical data

Datos técnicos

D ₁ [mm]	ID		D ₂ [mm]	D ₃ [mm]	D ₄ [mm]	X [mm]	L ₁ [mm]	L ₂ [mm]	L ₃ [mm]	L ₄ [mm]	L ₅ [mm]	L ₆ [mm]	L ₇ [mm]	G	M _{min} [Nm]	m [kg]
1.0	≡															
2.0	≡															
3.0	≡															
4.0	≡															
5.0	≡															
6.0	0204271	•	26.0	49.5	22.0	73.0	110.0	37.0	10.0	29.5	3.6	20.5	91.0	M5	16.0	1.8
8.0	0204272		28.0	49.5	24.0	73.0	110.0	37.0	10.0	30.0	3.6	20.5	91.0	M6	23.0	1.9
10.0	0204273		30.0	49.5	26.0	69.0	110.0	41.0	10.0	31.0	3.6	25.5	91.0	M8x1	45.0	1.9
12.0	0204274	•	32.0	49.5	28.0	63.0	110.0	47.0	10.0	31.5	3.6	30.5	91.0	M10x1	90.0	1.8
14.0	≡															
16.0	0204275		38.0	49.5	34.0	61.0	110.0	49.0	10.0	33.0	3.6	35.0	91.0	M12x1	185.0	1.9
20.0	0204276		42.0	49.5	38.0	59.0	110.0	51.0	10.0	34.0	3.7	37.8	91.0	M16x1	330.0	1.9

- ≡ Additional sizes can be clamped with intermediate sleeves
- Can be supplied from stock

- 🔧 Design suitable for MQL operations available on request
- 🔧 Bore for data carrier as an option

- 📄 Bore on form B are sealed with set screws
- Additional sizes and special designs available on request

- ≡ Se puede sujetar con casquillos intermedios, posibles dimensiones intermedias
- Posible suministro de existencias

- 🔧 Diseño apto para operaciones MQL disponible a pedido
- 🔧 Orificio para portador de datos como opción

- 📄 Orificios en forma B sellados con tornillos de fijación
- Tamaños adicionales y diseños especiales disponibles a pedido



Intermediate sleeves

see chapter accessories

Casquillos intermedios

consulte el capítulo sobre accesorios



Sleeve remover

see chapter accessories

Extractor de casquillos

consulte el capítulo sobre accesorios



Further accessories

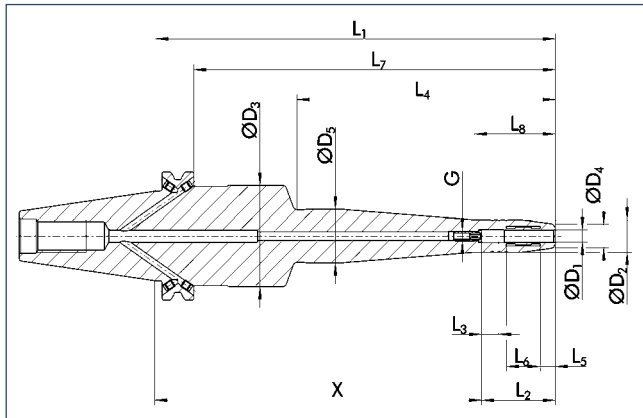
see chapter accessories

Accesorios adicionales

consulte el capítulo sobre accesorios

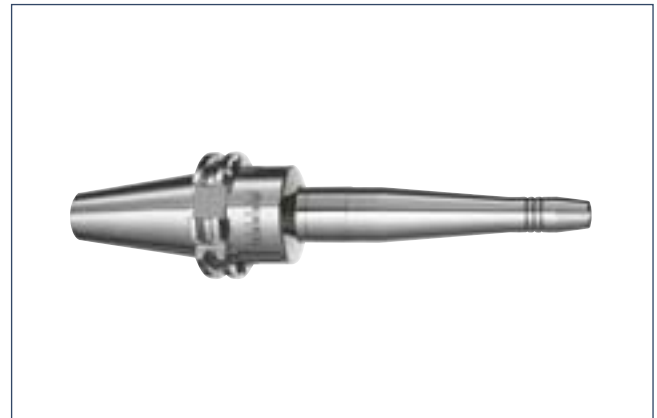
TENDO SDF-LSS SK 40

long, super slim design
with axial length adjustment



TENDO SDF-LSS SK 40

largo, diseño ultradelgado
con ajuste de la longitud axial



SK



Technical data

Datos técnicos

D ₁ [mm]	ID	D ₂ [mm]	D ₃ [mm]	D ₄ [mm]	D ₅ [mm]	X [mm]	L ₁ [mm]	L ₂ [mm]	L ₃ [mm]	L ₄ [mm]	L ₅ [mm]	L ₆ [mm]	L ₇ [mm]	L ₈ [mm]	G	m [kg]
1.0	≡															
2.0	≡															
3.0	≡															
4.0	≡															
5.0	≡															
6.0	0205581	16.0	50.0	12.0	26.5	163.0	200.0	37.0	10.0	129.0	5.5	19.0	181.0	40.5	M5	1.8
8.0	0205582	18.0	50.0	14.0	28.5	163.0	200.0	37.0	10.0	130.0	5.5	19.0	181.0	40.5	M6	1.8
10.0	0205583	20.0	50.0	16.0	30.5	159.0	200.0	41.0	10.0	130.0	5.5	24.0	181.0	40.5	M8x1	1.8
12.0	0205584	• 22.0	50.0	18.0	32.5	154.0	200.0	46.0	10.0	131.0	5.5	29.5	181.0	40.5	M10x1	1.8
16.0	0205585	26.0	50.0	22.0	36.5	151.0	200.0	49.0	10.0	131.0	5.5	34.0	181.0	40.5	M12x1	1.8
18.0	0205580	28.0	50.0	24.0	38.5	151.0	200.0	49.0	10.0	132.0	5.5	34.0	181.0	40.5	M12x1	1.8
20.0	0205586	• 30.0	50.0	26.0	40.5	149.0	200.0	51.0	10.0	132.0	5.5	36.5	181.0	40.5	M16x1	1.8

- ≡ Additional sizes can be clamped with intermediate sleeves
- Can be supplied from stock

- 🔧 Design suitable for MQL operations available on request
- 📄 Bore for data carrier as an option

- 📄 Bore on form B are sealed with set screws
- Additional sizes and special designs available on request

- ≡ Se puede sujetar con casquillos intermedios, posibles dimensiones intermedias
- Posible suministro de existencias

- 🔧 Diseño apto para operaciones MQL disponible a pedido
- 📄 Orificio para portador de datos como opción

- 📄 Orificios en forma B sellados con tornillos de fijación
- Tamaños adicionales y diseños especiales disponibles a pedido

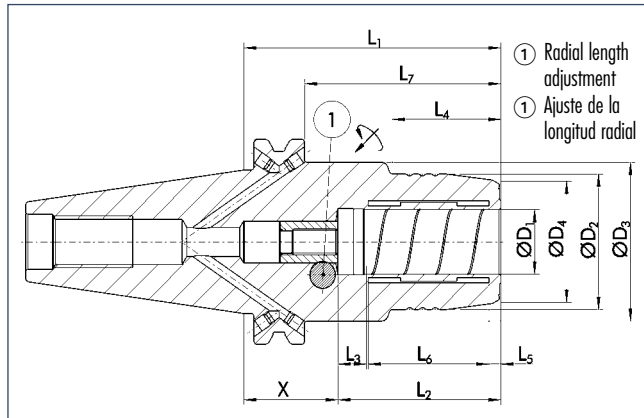
Intermediate sleeves
see chapter accessories
Casquillos intermedios
consulte el capítulo sobre accesorios

Sleeve remover
see chapter accessories
Extractor de casquillos
consulte el capítulo sobre accesorios

Further accessories
see chapter accessories
Accesorios adicionales
consulte el capítulo sobre accesorios

TENDO SDF-KSR-KS SK 40

short, slim design
with radial length adjustment



TENDO SDF-KSR-KS SK 40

corto, diseño delgado
con ajuste de la longitud radial



<math>< 0.003 \text{ mm}</math>



50000 min⁻¹



25000 min⁻¹



✓



✓



✓



✓



✓

Technical data

Datos técnicos

D ₁	ID	D ₂	D ₃	D ₄	X	L ₁	L ₂	L ₃	L ₄	L ₅	L ₆	L ₇	M _{min}	m
[mm]		[mm]	[mm]	[mm]	[mm]	[mm]	[mm]	[mm]	[mm]	[mm]	[mm]	[mm]	[Nm]	[kg]
6.0	≡													
8.0	≡													
10.0	≡													
12.0	≡													
14.0	≡													
16.0	≡													
20.0	0204736	42.0	49.5	37.5	29.5	80.5	51.0	10.0	34.0	3.7	37.8	61.5	280.0	1.4

- ≡ Additional sizes can be clamped with intermediate sleeves
- Can be supplied from stock

- ☑ Design suitable for MQL operations available on request
- ☑ Bore for data carrier as an option

- ℹ Bore on form B are sealed with set screws
- Additional sizes and special designs available on request

- ≡ Para sujetar con casquillos intermedios
- Posible suministro de existencias

- ☑ Diseño apto para operaciones MQL disponible a pedido
- ☑ Orificio para portador de datos como opción

- ℹ Orificios en forma B sellados con tornillos de fijación
- Tamaños adicionales y diseños especiales disponibles a pedido



Intermediate sleeves

see chapter accessories

Casquillos intermedios

consulte el capítulo sobre accesorios



Sleeve remover

see chapter accessories

Extractor de casquillos

consulte el capítulo sobre accesorios



Further accessories

see chapter accessories

Accesorios adicionales

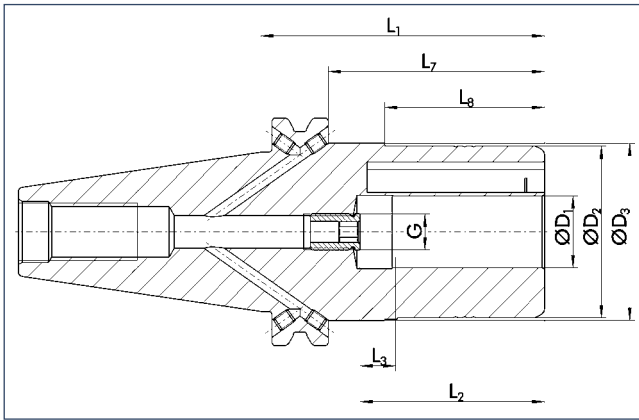
consulte el capítulo sobre accesorios

TRIBOS SPF-R SK 40

with axial length adjustment

TRIBOS SPF-R SK 40

con ajuste de la longitud axial



Technical data

Datos técnicos

D ₁ [mm]	ID		D ₂ [mm]	D ₃ [mm]	L ₁ [mm]	L ₂ [mm]	L ₃ [mm]	L ₇ [mm]	L ₈ [mm]	G	M _{min} [Nm]	m [kg]	SRE ID
6.0	0235241	•	25.0	49.5	70.0	37.0	10.0	51.0	35.0	M5	8.0	1.1	0201978
8.0	0235242	•	28.0	49.5	70.0	37.0	10.0	51.0	35.0	M6	14.0	1.1	0201980
10.0	0235243	•	35.0	49.5	75.0	42.0	10.0	56.0	40.0	M8x1	24.0	1.1	0201982
12.0	0235244	•	42.0	49.5	80.0	47.0	10.0	61.0	45.0	M8x1	40.0	1.1	0201983
14.0	0235249		48.0	49.5	80.0	47.0	10.0	61.0	45.0	M10x1	80.0	1.1	0201984
16.0	0235245	•	48.0	49.5	80.0	48.0	10.0	61.0	45.0	M10x1	120.0	1.2	0201984
18.0	0235240		48.0	49.5	80.0	48.0	10.0	61.0	45.0	M10x1	180.0	1.2	0201984
20.0	0235246	•	48.0	49.5	80.0	52.0	10.0	61.0	45.0	M10x1	240.0	1.2	0201984
25.0	0235247	•	60.0	63.5	100.0	57.0	10.0	81.0	45.0	M10x1	270.0	1.45	0201921
32.0	0235248	•	67.0	70.5	105.0	61.0	10.0	86.0	45.0	M10x1	350.0	1.6	0201922

- Additional sizes can be clamped with intermediate sleeves
- Can be supplied from stock

- Design suitable for MQL operations available on request
- Bore for data carrier as an option

- Bores on form B are sealed with set screws
- Additional sizes and special designs available on request

- Para sujetar con casquillos intermedios
- Posible suministro de existencias

- Diseño apto para operaciones MQL disponible a pedido
- Orificio para portador de datos como opción

- Orificios en forma B sellados con tornillos de fijación
- Tamaños adicionales y diseños especiales disponibles a pedido



Tool extensions
see chapter extensions

Extensiones de herramientas
consulte el capítulo sobre extensiones



Clamping devices
see chapter accessories

Dispositivos de sujeción
consulte el capítulo sobre accesorios



Reduction inserts
see chapter accessories

Insertos de reducción
consulte el capítulo sobre accesorios

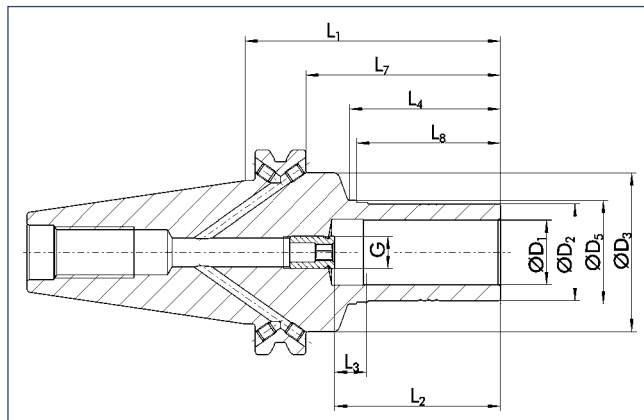


Length measuring devices
see chapter accessories

Disp. de medición de la longitud
consulte el capítulo sobre accesorios

TRIBOS SPF-S SK 40

with axial length adjustment



TRIBOS SPF-S SK 40

con ajuste de la longitud axial



< 0.003 mm



25000 min⁻¹



25000 min⁻¹



G2.5



HPC
HSC



Technical data

Datos técnicos

D ₁	ID		D ₂	D ₃	D ₅	L ₁	L ₂	L ₃	L ₄	L ₇	L ₈	G	M _{min}	m	SRE
[mm]			[mm]	[mm]	[mm]	[mm]	[mm]	[mm]	[mm]	[mm]	[mm]		[Nm]	[kg]	ID
6.0	0205131	•	10.0	49.0	13.0	80.0	37.0	10.0	37.0	61.0	35.0	M5	5.0	0.9	0201972
8.0	0205132	•	13.0	49.0	15.0	80.0	37.0	10.0	37.0	61.0	35.0	M6	12.0	0.95	0201973
10.0	0205133	•	16.0	49.0	18.0	80.0	42.0	10.0	42.0	61.0	40.0	M8x1	20.0	0.95	0201974
12.0	0205134	•	19.0	49.0	21.0	80.0	47.0	10.0	47.0	61.0	45.0	M8x1	30.0	1.0	0201975
14.0	0205139		22.0	49.0	24.0	80.0	47.0	10.0	47.0	61.0	45.0	M10x1	50.0	1.0	0201976
16.0	0205135	•	25.0	49.0	27.0	80.0	48.0	10.0	47.0	61.0	45.0	M10x1	70.0	1.0	0201977
18.0	0205130		28.0	49.0	30.0	80.0	48.0	10.0	47.0	61.0	45.0	M10x1	100.0	1.05	0201979
20.0	0205136	•	30.0	49.0	32.0	80.0	52.0	10.0	47.0	61.0	45.0	M10x1	150.0	1.05	0201981
25.0	0205137		36.0	49.0	38.0	80.0	57.0	10.0	52.0	61.0	45.0	M10x1	200.0	1.1	0201987
32.0	0205138		45.0	49.0	47.0	80.0	61.0	10.0	57.0	61.0	45.0	M10x1	280.0	1.25	0201998

- Additional sizes can be clamped with intermediate sleeves
- Can be supplied from stock

- Design suitable for MQL operations available on request
- Bore for data carrier as an option

- Optimal for light machine cutting – consider radial forces
- Bores on form B are sealed with set screws
- Additional sizes and special designs available on request

- Para sujetar con casquillos intermedios
- Posible suministro de existencias

- Diseño apto para operaciones MQL disponible a pedido
- Orificio para portador de datos como opción

- Óptimo para corte con máquinas ligeras; considera fuerzas radiales
- Orificios en forma B sellados con tornillos de fijación
- Tamaños adicionales y diseños especiales disponibles a pedido



Tool extensions
see chapter extensions

Extensiones de herramientas
consulte el capítulo sobre extensiones



Clamping devices
see chapter accessories

Dispositivos de sujeción
consulte el capítulo sobre accesorios



Reduction inserts
see chapter accessories

Insertos de reducción
consulte el capítulo sobre accesorios



Length measuring devices
see chapter accessories

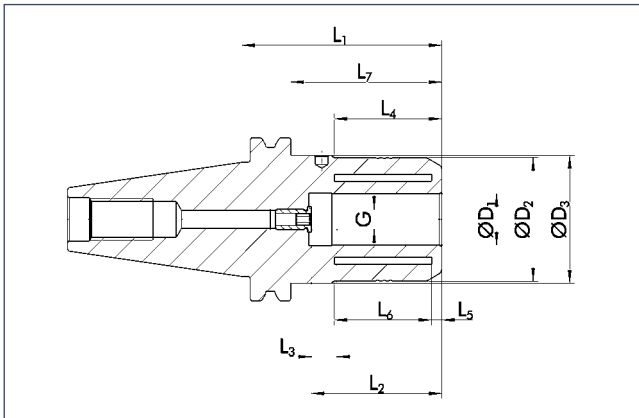
Disp. de medición de la longitud
consulte el capítulo sobre accesorios

SINO-R SK 40

with axial length adjustment

SINO-R SK 40

con ajuste de la longitud axial



Technical data

Datos técnicos

D ₁ [mm]	ID		D ₂ [mm]	D ₃ [mm]	L ₁ [mm]	L ₂ [mm]	L ₃ [mm]	L ₄ [mm]	L ₅ [mm]	L ₆ [mm]	L ₇ [mm]	G	M _{min} [Nm]	m [kg]
3.0	≡													
4.0	≡													
5.0	≡													
6.0	≡													
8.0	≡													
10.0	≡													
12.0	0209543	•	39.0	44.9	73.0	46.0	10.0	34.0	5.0	32.0	54.0	M8x1	130.0	1.3
14.0	≡													
16.0	≡													
20.0	0209547	•	48.5	50.15	78.0	51.0	10.0	42.0	5.0	37.0	59.0	M8x1	450.0	1.5
32.0	0209549	•	65.0	69.85	109.0	61.0	10.0	47.0	6.0	46.0	90.0	M10x1	850.0	1.5

- ≡ Additional sizes can be clamped with intermediate sleeves
- Can be supplied from stock

☑ Bore for data carrier as an option

ℹ Optimal for heavy duty milling
Additional sizes and special designs available on request

- ≡ Para sujetar con casquillos intermedios
- Posible suministro de existencias

☑ Orificio para portador de datos como opción

ℹ Óptimo para fresado de trabajo pesado
Tamaños adicionales y diseños especiales disponibles a pedido



Intermediate sleeves
see chapter accessories

Casquillos intermedios
consulte el capítulo sobre accesorios



Spanner wrenches
see chapter accessories

Llaves de apriete
consulte el capítulo sobre accesorios



"C"-spanners
see chapter accessories

Llaves de gancho
consulte el capítulo sobre accesorios



Sleeve remover
see chapter accessories

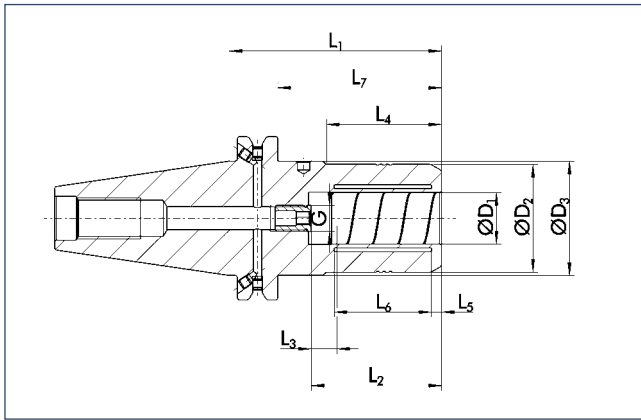
Extractor de casquillos
consulte el capítulo sobre accesorios

SINO-T SK 40

with axial length adjustment

SINO-T SK 40

con ajuste de la longitud axial



≤ 0.005 mm



40000 min⁻¹



25000 min⁻¹



Technical data

Datos técnicos

D ₁ [mm]	ID		D ₂ [mm]	D ₃ [mm]	L ₁ [mm]	L ₂ [mm]	L ₃ [mm]	L ₄ [mm]	L ₅ [mm]	L ₆ [mm]	L ₇ [mm]	G	M _{min} [Nm]	m [kg]
3.0	≡													
4.0	≡													
5.0	≡													
6.0	≡													
8.0	≡													
10.0	≡													
12.0	0218854	•	30.0	44.45	73.0	46.0	10.0	32.0	4.0	31.0	54.0	M8x1	95.0	1.2
14.0	≡													
16.0	≡													
20.0	0218856	•	42.0	44.45	83.0	51.0	10.0	45.0	4.0	38.0	64.0	M10x1	295.0	1.4

- ≡ Additional sizes can be clamped with intermediate sleeves
- Can be supplied from stock

Bore for data carrier as an option

Bore on form B are sealed with set screws
Additional sizes and special designs available on request

- ≡ Para sujetar con casquillos intermedios
- Posible suministro de existencias

Orificio para portador de datos como opción

Orificios en forma B sellados con tornillos de fijación
Tamaños adicionales y diseños especiales disponibles a pedido



Intermediate sleeves
see chapter accessories

Casquillos intermedios
consulte el capítulo sobre accesorios



Spanner wrenches
see chapter accessories

Llaves de apriete
consulte el capítulo sobre accesorios



"C"-spanners
see chapter accessories

Llaves de gancho
consulte el capítulo sobre accesorios



Sleeve remover
see chapter accessories

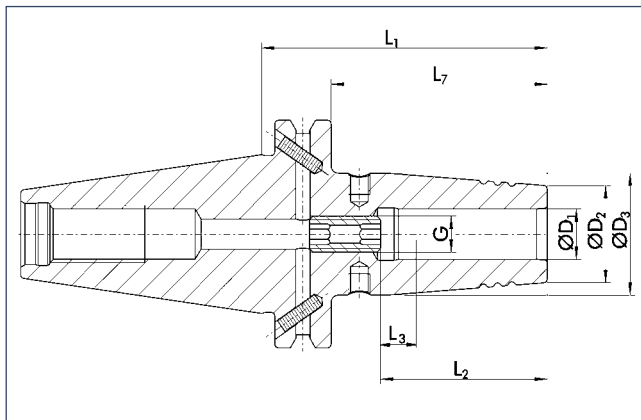
Extractor de casquillos
consulte el capítulo sobre accesorios

CELSIO SSF SK 40

with axial length adjustment

CELSIO SSF SK 40

con ajuste de la longitud axial



Technical data

Datos técnicos

D ₁ [mm]	ID		D ₂ [mm]	D ₃ [mm]	L ₁ [mm]	L ₂ [mm]	L ₃ [mm]	L ₇ [mm]	G	M _{min} [Nm]	m [kg]
3.0	0210080		10.0	21.0	80.0	10.0		61.0		8.0	0.9
4.0	0210090		10.0	21.0	80.0	12.0		61.0		10.0	0.9
5.0	0210100		10.0	21.0	80.0	15.0		61.0		12.0	0.9
6.0	0208340	•	21.0	27.0	80.0	36.0	10.0	61.0	M5	20.0	1.0
6.0	0208350		21.0	27.0	130.0	36.0	10.0	111.0	M5	20.0	1.2
6.0	0208360	•	21.0	27.0	160.0	36.0	10.0	141.0	M5	20.0	1.4
6.0	0208370		21.0	27.0	200.0	36.0	10.0	181.0	M5	20.0	1.5
8.0	0208341	•	21.0	27.0	80.0	36.0	10.0	61.0	M6	52.0	1.0
8.0	0208351		21.0	27.0	130.0	36.0	10.0	111.0	M6	52.0	1.2
8.0	0208361	•	21.0	27.0	160.0	36.0	10.0	141.0	M6	52.0	1.4
8.0	0208371		21.0	27.0	200.0	36.0	10.0	181.0	M6	52.0	1.6
10.0	0208342	•	24.0	32.0	80.0	42.0	10.0	61.0	M8x1	70.0	1.0
10.0	0208352		24.0	32.0	130.0	42.0	10.0	111.0	M8x1	70.0	1.3
10.0	0208362	•	24.0	32.0	160.0	42.0	10.0	141.0	M8x1	70.0	1.6
10.0	0208372		24.0	32.0	200.0	42.0	10.0	181.0	M8x1	70.0	1.7

• Can be supplied from stock

• Posible suministro de existencias

Design suitable for MQL operations available on request

Diseño apto para operaciones MQL disponible a pedido

Bore for data carrier as an option

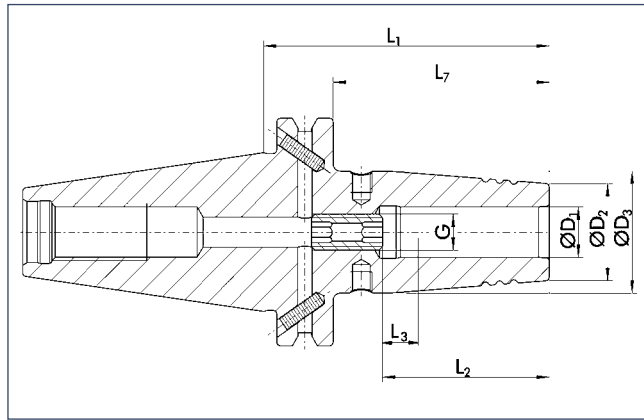
Orificio para portador de datos como opción

Additional sizes and special designs available on request

Tamaños adicionales y diseños especiales disponibles a pedido

CELSIO SSF SK 40

with axial length adjustment



CELSIO SSF SK 40

con ajuste de la longitud axial



<math>< 0.003 \text{ mm}</math>



15000 min⁻¹



25000 min⁻¹



Technical data

Datos técnicos

D ₁ [mm]	ID		D ₂ [mm]	D ₃ [mm]	L ₁ [mm]	L ₂ [mm]	L ₃ [mm]	L ₇ [mm]	G	M _{min} [Nm]	m [kg]
12.0	0208343	•	24.0	32.0	80.0	47.0	10.0	61.0	M10x1	150.0	1.0
12.0	0208353		24.0	32.0	130.0	47.0	10.0	111.0	M10x1	150.0	1.3
12.0	0208363	•	24.0	32.0	160.0	47.0	10.0	141.0	M10x1	150.0	1.6
12.0	0208373		24.0	32.0	200.0	47.0	10.0	181.0	M10x1	150.0	1.7
14.0	0208344	•	27.0	34.0	80.0	47.0	10.0	61.0	M10x1	180.0	1.1
14.0	0208354		27.0	34.0	130.0	47.0	10.0	111.0	M10x1	180.0	1.4
14.0	0208364	•	27.0	34.0	160.0	47.0	10.0	141.0	M10x1	180.0	1.6
14.0	0208374		27.0	34.0	200.0	47.0	10.0	181.0	M10x1	180.0	1.8
16.0	0208345	•	27.0	34.0	80.0	50.0	10.0	61.0	M12x1	300.0	1.0
16.0	0208355		27.0	34.0	130.0	50.0	10.0	111.0	M12x1	300.0	1.4
16.0	0208365	•	27.0	34.0	160.0	50.0	10.0	141.0	M12x1	300.0	1.6
16.0	0208375		27.0	34.0	200.0	50.0	10.0	181.0	M12x1	300.0	1.8
18.0	0208346	•	33.0	42.0	80.0	50.0	10.0	61.0	M12x1	370.0	1.2
18.0	0208356		33.0	42.0	130.0	50.0	10.0	111.0	M12x1	370.0	1.5
18.0	0208366	•	33.0	42.0	160.0	50.0	10.0	141.0	M12x1	370.0	1.7
18.0	0208376		33.0	42.0	200.0	50.0	10.0	181.0	M12x1	370.0	1.8

• Can be supplied from stock

☑ Design suitable for MQL operations available on request

☑ Bore for data carrier as an option

📄 Additional sizes and special designs available on request

• Posible suministro de existencias

☑ Diseño apto para operaciones MQL disponible a pedido

☑ Orificio para portador de datos como opción

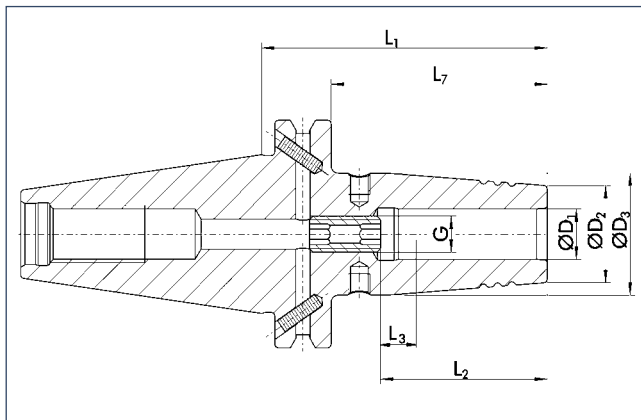
📄 Tamaños adicionales y diseños especiales disponibles a pedido

CELSIO SSF SK 40

with axial length adjustment

CELSIO SSF SK 40

con ajuste de la longitud axial



Technical data

Datos técnicos

D ₁ [mm]	ID		D ₂ [mm]	D ₃ [mm]	L ₁ [mm]	L ₂ [mm]	L ₃ [mm]	L ₇ [mm]	G	M _{min} [Nm]	m [kg]
20.0	0208347	•	33.0	42.0	80.0	52.0	10.0	61.0	M16x1	420.0	1.2
20.0	0208357		33.0	42.0	130.0	52.0	10.0	111.0	M16x1	420.0	1.5
20.0	0208367	•	33.0	42.0	160.0	52.0	10.0	141.0	M16x1	420.0	1.9
20.0	0208377		33.0	42.0	200.0	52.0	10.0	181.0	M16x1	420.0	1.9
25.0	0208348	•	44.0	53.0	100.0	58.0	10.0	81.0	M16x1	550.0	1.6
25.0	0208358		44.0	53.0	130.0	58.0	10.0	111.0	M16x1	550.0	1.8
25.0	0208368	•	44.0	53.0	160.0	58.0	10.0	141.0	M16x1	550.0	2.5
25.0	0208378		44.0	53.0	200.0	58.0	10.0	181.0	M16x1	550.0	2.4
32.0	0208349	•	44.0	53.0	100.0	58.0	10.0	81.0	M16x1	600.0	1.5

• Can be supplied from stock

• Posible suministro de existencias

Design suitable for MQL operations available on request

Diseño apto para operaciones MQL disponible a pedido

Bore for data carrier as an option

Orificio para portador de datos como opción

Reinforced version also available
Additional sizes and special designs available on request

Versión reforzada también disponible
Tamaños adicionales y diseños especiales disponibles a pedido



Extensions
see chapter extensions

Extensiones
consulte el capítulo sobre extensiones



Shrinking unit
see chapter accessories

Unidad de compresión
consulte el capítulo sobre accesorios

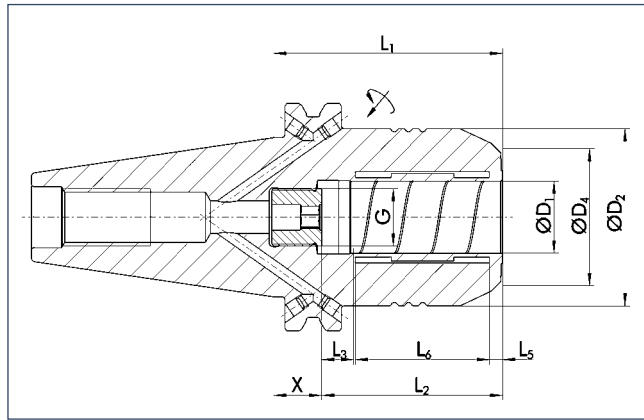


Further accessories
see chapter accessories

Accesorios adicionales
consulte el capítulo sobre accesorios

TENDO SDF-E SK 50

short, rigid design
with axial length adjustment



TENDO SDF-E SK 50

corto, diseño rígido
con ajuste de la longitud axial



Technical data

Datos técnicos

D ₁ [mm]	ID	D ₂ [mm]	D ₄ [mm]	X [mm]	L ₁ [mm]	L ₂ [mm]	L ₃ [mm]	L ₅ [mm]	L ₆ [mm]	G	M _{min} [Nm]	m [kg]
6.0	≡											
8.0	≡											
10.0	≡											
12.0	≡											
14.0	≡											
16.0	≡											
18.0	≡											
20.0	≡											
25.0	≡											
32.0	0205518	•	72.0	60.0	20.0	81.0	61.0	10.0	4.2	47.7	M16x1	650.0 4.0

- ≡ Additional sizes can be clamped with intermediate sleeves
- Can be supplied from stock

- ☑ Design suitable for MQL operations available on request
- ☑ Bore for data carrier as an option

- i Bore on form B are sealed with set screws
- Additional sizes and special designs available on request

- ≡ Para sujetar con casquillos intermedios
- Posible suministro de existencias

- ☑ Diseño apto para operaciones MQL disponible a pedido
- ☑ Orificio para portador de datos como opción

- i Orificios en forma B sellados con tornillos de fijación
- Tamaños adicionales y diseños especiales disponibles a pedido



Intermediate sleeves

see chapter accessories

Casquillos intermedios

consulte el capítulo sobre accesorios



Sleeve remover

see chapter accessories

Extractor de casquillos

consulte el capítulo sobre accesorios



Further accessories

see chapter accessories

Accesorios adicionales

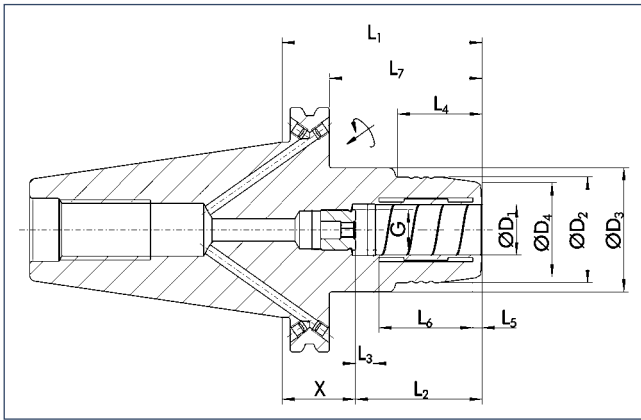
consulte el capítulo sobre accesorios

TENDO SDF-KS SK 50

short, slim design
with axial length adjustment

TENDO SDF-KS SK 50

corto, diseño delgado
con ajuste de la longitud axial



SK



Technical data

Datos técnicos

D ₁		D ₂	D ₃	D ₄	X	L ₁	L ₂	L ₃	L ₄	L ₅	L ₆	L ₇	G	M _{min}	m
[mm]	ID	[mm]	[mm]	[mm]	[mm]	[mm]	[mm]	[mm]	[mm]	[mm]	[mm]	[mm]		[Nm]	[kg]
6.0	≡														
8.0	≡														
10.0	≡														
12.0	≡														
14.0	≡														
16.0	≡														
18.0	≡														
20.0	0204246 •	42.0	49.5	38.0	29.5	80.5	51.0	10.0	34.0	3.7	37.8	61.5	M16x1	330.0	3.3

- ≡ Additional sizes can be clamped with intermediate sleeves
- Can be supplied from stock

- ≡ Para sujetar con casquillos intermedios
- Posible suministro de existencias

- 🔧 Design suitable for MQL operations available on request
- 📄 Bore for data carrier as an option

- 🔧 Diseño apto para operaciones MQL disponible a pedido
- 📄 Orificio para portador de datos como opción

- 📄 Bore on form B are sealed with set screws
- Additional sizes and special designs available on request

- 📄 Orificios en forma B sellados con tornillos de fijación
- Tamaños adicionales y diseños especiales disponibles a pedido



Intermediate sleeves
see chapter accessories
Casquillos intermedios
consulte el capítulo sobre accesorios



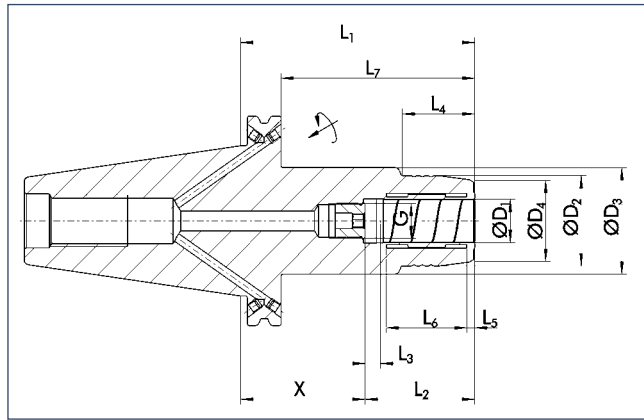
Sleeve remover
see chapter accessories
Extractor de casquillos
consulte el capítulo sobre accesorios



Further accessories
see chapter accessories
Accesorios adicionales
consulte el capítulo sobre accesorios

TENDO SDF-LS SK 50

long, slim design
with axial length adjustment



TENDO SDF-LS SK 50

largo, diseño delgado
con ajuste de la longitud axial



Technical data

Datos técnicos

D ₁ [mm]	ID	D ₂ [mm]	D ₃ [mm]	D ₄ [mm]	X [mm]	L ₁ [mm]	L ₂ [mm]	L ₃ [mm]	L ₄ [mm]	L ₅ [mm]	L ₆ [mm]	L ₇ [mm]	G	M _{min} [Nm]	m [kg]
6.0	≡														
8.0	≡														
10.0	≡														
12.0	≡														
14.0	≡														
16.0	≡														
18.0	≡														
20.0	0204256	42.0	49.5	38.0	59.0	110.0	51.0	10.0	34.0	3.7	37.8	91.0	M16x1	330.0	3.7

- ≡ Additional sizes can be clamped with intermediate sleeves
- Can be supplied from stock

- 🔧 Design suitable for MQL operations available on request
- 📄 Bore for data carrier as an option

- 📄 Bore on form B are sealed with set screws
- Additional sizes and special designs available on request

- ≡ Para sujetar con casquillos intermedios
- Posible suministro de existencias

- 🔧 Diseño apto para operaciones MQL disponible a pedido
- 📄 Orificio para portador de datos como opción

- 📄 Orificios en forma B sellados con tornillos de fijación
- Tamaños adicionales y diseños especiales disponibles a pedido

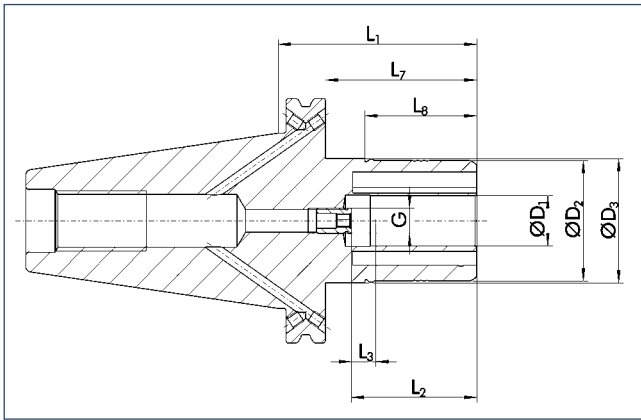


TRIBOS SPF-R SK 50

with axial length adjustment

TRIBOS SPF-R SK 50

con ajuste de la longitud axial



Technical data

Datos técnicos

D ₁ [mm]	ID		D ₂ [mm]	D ₃ [mm]	L ₁ [mm]	L ₂ [mm]	L ₃ [mm]	L ₇ [mm]	L ₈ [mm]	G	M _{min} [Nm]	m [kg]	SRE ID
10.0	0235383	•	35.0	49.5	80.0	42.0	10.0	61.0	40.0	M8x1	24.0	4.0	0201982
12.0	0235384	•	42.0	49.5	80.0	47.0	10.0	61.0	45.0	M8x1	40.0	4.0	0201983
14.0	0235389		48.0	49.5	80.0	47.0	10.0	61.0	45.0	M10x1	80.0	4.1	0201984
16.0	0235385	•	48.0	49.5	80.0	48.0	10.0	61.0	45.0	M10x1	120.0	4.1	0201984
18.0	0235380		48.0	49.5	80.0	48.0	10.0	61.0	45.0	M10x1	180.0	4.1	0201984
20.0	0235386	•	48.0	49.5	80.0	52.0	10.0	61.0	45.0	M10x1	240.0	4.1	0201984
25.0	0235387	•	60.0	63.5	80.0	57.0	10.0	61.0	45.0	M10x1	270.0	4.3	0201921
32.0	0235388	•	67.0	70.5	80.0	61.0	10.0	61.0	45.0	M10x1	350.0	4.5	0201922

- ▢ Additional sizes can be clamped with intermediate sleeves
- Can be supplied from stock

- ▢ Para sujetar con casquillos intermedios
- Posible suministro de existencias

- 🔧 Design suitable for MQL operations available on request
- 📄 Bore for data carrier as an option

- 🔧 Diseño apto para operaciones MQL disponible a pedido
- 📄 Orificio para portador de datos como opción

- 📄 Bore on form B are sealed with set screws
- Additional sizes and special designs available on request

- 📄 Orificios en forma B sellados con tornillos de fijación
- Tamaños adicionales y diseños especiales disponibles a pedido



Tool extensions
see chapter accessories

Extensiones de herramientas
consulte el capítulo sobre accesorios



Clamping devices
see chapter accessories

Dispositivos de sujeción
consulte el capítulo sobre accesorios



Reduction inserts
see chapter accessories

Insertos de reducción
consulte el capítulo sobre accesorios



Length measuring devices
see chapter accessories

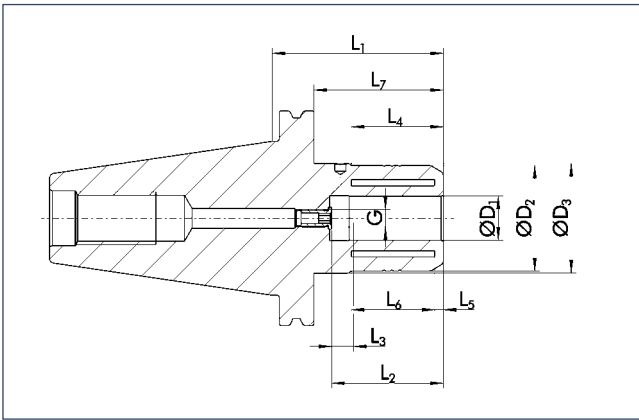
Disp. de medición de la longitud
consulte el capítulo sobre accesorios

SINO-R SK 50

with axial length adjustment

SINO-R SK 50

con ajuste de la longitud axial



≤ 0.005 mm



40000 min⁻¹



25000 min⁻¹



✓



✓



✓



✓



✓

Technical data

Datos técnicos

D ₁ [mm]	ID		D ₂ [mm]	D ₃ [mm]	L ₁ [mm]	L ₂ [mm]	L ₃ [mm]	L ₄ [mm]	L ₅ [mm]	L ₆ [mm]	L ₇ [mm]	G	M _{min} [Nm]	m [kg]
3.0	≡													
4.0	≡													
5.0	≡													
6.0	≡													
8.0	≡													
10.0	≡													
12.0	≡													
14.0	≡													
16.0	≡													
18.0	≡													
20.0	0209557	•	48.5	50.15	78.0	51.0	10.0	42.0	5.0	37.0	59.0	M8x1	450.0	3.4
25.0	≡													
32.0	0209559	•	65.0	69.85	90.0	61.0	10.0	47.0	6.0	46.0	71.0	M10x1	850.0	4.2

≡ Additional sizes can be clamped with intermediate sleeves
• Can be supplied from stock

⊕ Bore for data carrier as an option

ⓘ Optimal for heavy duty milling
Additional sizes and special designs available on request

≡ Para sujetar con casquillos intermedios
• Posible suministro de existencias

⊕ Orificio para portador de datos como opción

ⓘ Óptimo para fresado de trabajo pesado
Tamaños adicionales y diseños especiales disponibles a pedido



Intermediate sleeves
see chapter accessories

Casquillos intermedios
consulte el capítulo sobre accesorios



Spanner wrenches
see chapter accessories

Llaves de apriete
consulte el capítulo sobre accesorios



"C"-spanners
see chapter accessories

Llaves de gancho
consulte el capítulo sobre accesorios



Sleeve remover
see chapter accessories

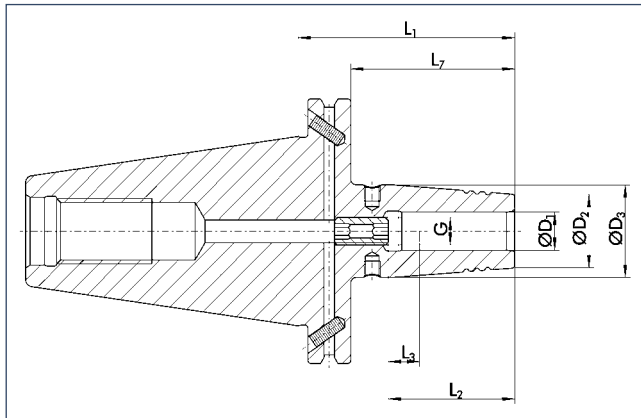
Extractor de casquillos
consulte el capítulo sobre accesorios

CELSIO SSF SK 50

with axial length adjustment

CELSIO SSF SK 50

con ajuste de la longitud axial



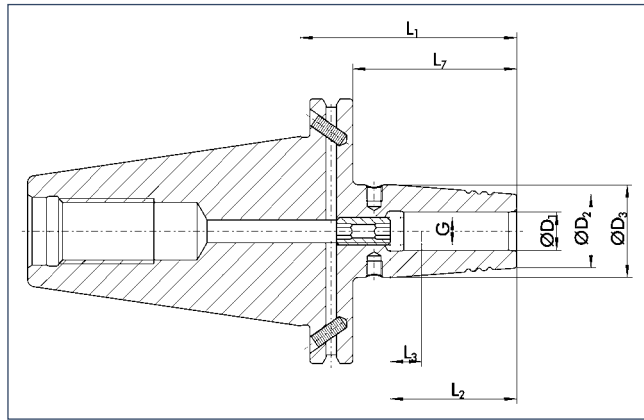
Technical data

Datos técnicos

D ₁ [mm]	ID		D ₂ [mm]	D ₃ [mm]	L ₁ [mm]	L ₂ [mm]	L ₃ [mm]	L ₇ [mm]	G	M _{min} [Nm]	m [kg]
6.0	0208240	•	21.0	27.0	80.0	36.0	10.0	61.0	M5	20.0	2.9
6.0	0208250		21.0	27.0	130.0	36.0	10.0	111.0	M5	20.0	3.0
6.0	0208260	•	21.0	27.0	160.0	36.0	10.0	141.0	M5	20.0	3.2
6.0	0208270		21.0	27.0	200.0	36.0	10.0	181.0	M5	20.0	3.7
8.0	0208241	•	21.0	27.0	80.0	36.0	10.0	61.0	M6	52.0	2.9
8.0	0208251		21.0	27.0	130.0	36.0	10.0	111.0	M6	52.0	3.0
8.0	0208261	•	21.0	27.0	160.0	36.0	10.0	141.0	M6	52.0	3.2
8.0	0208271		21.0	27.0	200.0	36.0	10.0	181.0	M6	52.0	3.9
10.0	0208242	•	24.0	32.0	80.0	42.0	10.0	61.0	M8x1	70.0	2.9
10.0	0208252		24.0	32.0	130.0	42.0	10.0	111.0	M8x1	70.0	3.1
10.0	0208262	•	24.0	32.0	160.0	42.0	10.0	141.0	M8x1	70.0	3.5
10.0	0208272		24.0	32.0	200.0	42.0	10.0	181.0	M8x1	70.0	3.8
12.0	0208243	•	24.0	32.0	80.0	47.0	10.0	61.0	M10x1	150.0	2.9
12.0	0208253		24.0	32.0	130.0	47.0	10.0	111.0	M10x1	150.0	3.1
12.0	0208263	•	24.0	32.0	160.0	47.0	10.0	141.0	M10x1	150.0	3.5
12.0	0208273		24.0	32.0	200.0	47.0	10.0	181.0	M10x1	150.0	3.9
14.0	0208244	•	27.0	34.0	80.0	47.0	10.0	61.0	M10x1	180.0	3.0
14.0	0208254		27.0	34.0	130.0	47.0	10.0	111.0	M10x1	180.0	3.2
14.0	0208264	•	27.0	34.0	160.0	47.0	10.0	141.0	M10x1	180.0	3.5
14.0	0208274		27.0	34.0	200.0	47.0	10.0	181.0	M10x1	180.0	3.9
16.0	0208245	•	27.0	34.0	80.0	50.0	10.0	61.0	M12x1	300.0	2.9
16.0	0208255		27.0	34.0	130.0	50.0	10.0	111.0	M12x1	300.0	3.1
16.0	0208265	•	27.0	34.0	160.0	50.0	10.0	141.0	M12x1	300.0	3.6
16.0	0208275		27.0	34.0	200.0	50.0	10.0	181.0	M12x1	300.0	4.0

CELSIO SSF SK 50

with axial length adjustment



CELSIO SSF SK 50

con ajuste de la longitud axial



< 0.003 mm



15000 min⁻¹



25000 min⁻¹



Technical data

Datos técnicos

D ₁ [mm]	ID		D ₂ [mm]	D ₃ [mm]	L ₁ [mm]	L ₂ [mm]	L ₃ [mm]	L ₇ [mm]	G	M _{min} [Nm]	m [kg]
18.0	0208246	•	33.0	42.0	80.0	50.0	10.0	61.0	M12x1	370.0	3.0
18.0	0208256		33.0	42.0	130.0	50.0	10.0	111.0	M12x1	370.0	3.5
18.0	0208266	•	33.0	42.0	160.0	50.0	10.0	141.0	M12x1	370.0	3.9
18.0	0208276		33.0	42.0	200.0	50.0	10.0	181.0	M12x1	370.0	4.1
20.0	0208247	•	33.0	42.0	80.0	52.0	10.0	61.0	M16x1	420.0	2.9
20.0	0208257		33.0	42.0	130.0	52.0	10.0	111.0	M16x1	420.0	3.5
20.0	0208267	•	33.0	42.0	160.0	52.0	10.0	141.0	M16x1	420.0	4.0
20.0	0208277		33.0	42.0	200.0	52.0	10.0	181.0	M16x1	420.0	4.1
25.0	0208248	•	44.0	53.0	100.0	58.0	10.0	81.0	M16x1	550.0	3.5
25.0	0208258		44.0	53.0	130.0	58.0	10.0	111.0	M16x1	550.0	4.5
25.0	0208268	•	44.0	53.0	160.0	58.0	10.0	141.0	M16x1	550.0	4.1
25.0	0208278		44.0	53.0	200.0	58.0	10.0	181.0	M16x1	550.0	4.5
32.0	0208249	•	44.0	53.0	100.0	58.0	10.0	81.0	M16x1	600.0	3.4
32.0	0208259		44.0	53.0	130.0	58.0	10.0	111.0	M16x1	600.0	3.9
32.0	0208269	•	44.0	53.0	160.0	58.0	10.0	141.0	M16x1	600.0	4.4
32.0	0208279		44.0	53.0	200.0	58.0	10.0	181.0	M16x1	600.0	5.0

- Additional sizes can be clamped with intermediate sleeves
- Can be supplied from stock

- Design suitable for MQL operations available on request
- Bore for data carrier as an option

- Reinforced version also available
- Additional sizes and special designs available on request

- Para sujetar con casquillos intermedios
- Posible suministro de existencias

- Diseño apto para operaciones MQL disponible a pedido
- Orificio para portador de datos como opción

- Versión reforzada también disponible
- Tamaños adicionales y diseños especiales disponibles a pedido