

Mounting Shanks ABS · Zancos de montaje ABS

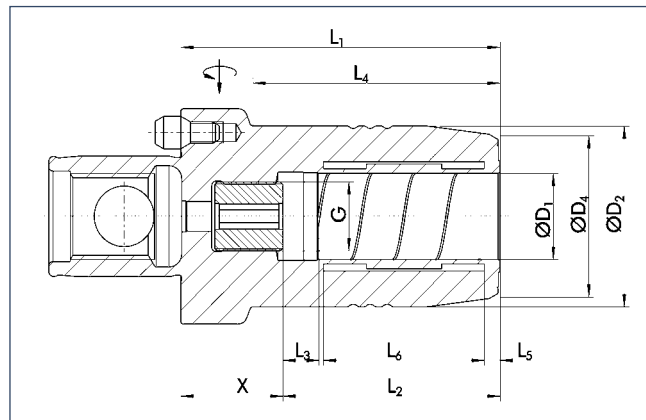


MOUNTING SHANKS ABS ZANCOS DE MONTAJE ABS

ABS-H	Page/Página
ABS-H 40	
TENDO	250
ABS-H 50	
TENDO	251

TENDO SDF ABS-H 40

with axial length adjustment
compatible with the former ABS system



TENDO SDF ABS-H 40

con ajuste de la longitud axial
compatible con el sistema ABS anterior



< 0.003 mm



50000 min⁻¹



8000 min⁻¹



✓



✓



✓



✓

Technical data

Datos técnicos

D ₁ [mm]	ID	D ₂ [mm]	D ₄ [mm]	X [mm]	L ₁ [mm]	L ₂ [mm]	L ₃ [mm]	L ₄ [mm]	L ₅ [mm]	L ₆ [mm]	G	M _{min} [Nm]	m [kg]
1.0	≡												
2.0	≡												
3.0	≡												
4.0	≡												
5.0	≡												
6.0	0203881	26.0	22.0	18.0	55.0	37.0	10.0	36.5	3.6	20.5	M5	16.0	0.4
8.0	0203882	28.0	24.0	23.0	60.0	37.0	10.0	42.0	3.6	20.5	M6	23.0	0.4
10.0	0203883	• 30.0	26.0	24.0	65.0	41.0	10.0	47.5	3.6	25.5	M8x1	45.0	0.5
12.0	0203884	• 32.0	28.0	19.0	65.0	46.0	10.0	48.0	3.6	30.5	M10x1	90.0	0.5

≡ Additional sizes can be clamped with intermediate sleeves
• Can be supplied from stock

🔧 Design suitable for MQL operations available on request
🔧 Bore for data carrier as an option

📄 Balancing grade G 6.3 at 8000 min⁻¹
Additional sizes and special designs available on request

≡ Se puede sujetar con casquillos intermedios, posibles dimensiones intermedias
• Posible suministro de existencias

🔧 Diseño apto para operaciones MQL disponible a pedido
🔧 Orificio para portador de datos como opción

📄 Grado de balanceo G 6.3 a 8000 min⁻¹
Tamaños adicionales y diseños especiales disponibles a pedido



Intermediate sleeves

see chapter accessories

Casquillos intermedios
consulte el capítulo sobre accesorios



Sleeve remover

see chapter accessories

Extractor de casquillos
consulte el capítulo sobre accesorios



Further accessories

see chapter accessories

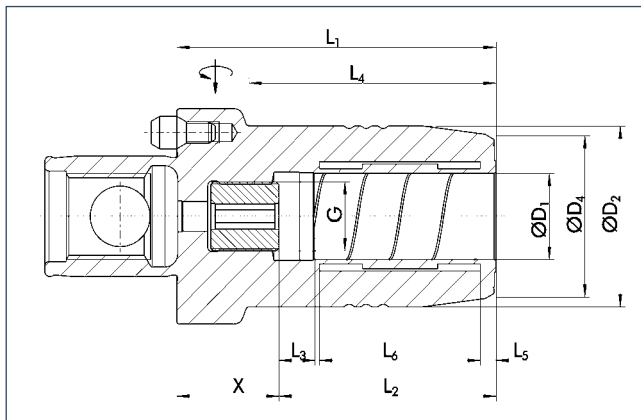
Accesorios adicionales
consulte el capítulo sobre accesorios

TENDO SDF ABS-H 50

with axial length adjustment
compatible with the former ABS system

TENDO SDF ABS-H 50

con ajuste de la longitud axial
compatible con el sistema ABS anterior



ABS-H

Technical data

Datos técnicos

D ₁ [mm]	ID		D ₂ [mm]	D ₄ [mm]	X [mm]	L ₁ [mm]	L ₂ [mm]	L ₃ [mm]	L ₄ [mm]	L ₅ [mm]	L ₆ [mm]	G	M _{min} [Nm]	m [kg]
1.0	≡													
2.0	≡													
3.0	≡													
4.0	≡													
5.0	≡													
6.0	0204571		26.0	22.0	18.0	55.0	37.0	10.0	33.5	3.6	20.5	M5	16.0	0.6
8.0	0204572		28.0	24.0	18.0	55.0	37.0	10.0	34.0	3.6	20.5	M6	23.0	0.6
10.0	0204573	•	30.0	26.0	24.0	65.0	41.0	10.0	45.0	3.6	25.5	M8x1	45.0	0.6
12.0	0204574	•	32.0	28.0	19.0	65.0	46.0	10.0	45.5	3.6	30.5	M10x1	90.0	0.7
14.0	0204579		34.0	30.0	19.0	65.0	46.0	10.0	46.0	3.6	30.5	M10x1	110.0	0.7
16.0	0204575	•	38.0	34.0	21.0	70.0	49.0	10.0	52.0	3.6	35.0	M10x1	185.0	0.8
18.0	0204570	•	40.0	36.0	21.0	70.0	49.0	10.0	52.5	3.6	35.0	M10x1	240.0	0.8
20.0	0204576	•	42.0	38.0	24.0	75.0	51.0	10.0	58.0	3.7	37.8	M16x1	330.0	0.9

≡ Additional sizes can be clamped with intermediate sleeves
• Can be supplied from stock

☑ Design suitable for MQL operations available on request
☑ Bore for data carrier as an option

ℹ Balancing grade G 6.3 at 8000 min⁻¹
Additional sizes and special designs available on request

≡ Se puede sujetar con casquillos intermedios, posibles dimensiones intermedias
• Posible suministro de existencias

☑ Diseño apto para operaciones MQL disponible a pedido
☑ Orificio para portador de datos como opción

ℹ Grado de balanceo G 6.3 a 8000 min⁻¹
Tamaños adicionales y diseños especiales disponibles a pedido

Intermediate sleeves
see chapter accessories
Casquillos intermedios
consulte el capítulo sobre accesorios

Sleeve remover
see chapter accessories
Extractor de casquillos
consulte el capítulo sobre accesorios

Further accessories
see chapter accessories
Accesorios adicionales
consulte el capítulo sobre accesorios