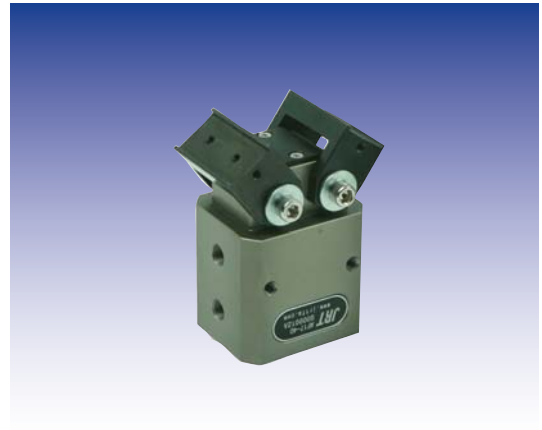


Gripper

AF17-25,40

Character

- Angular type by Rack & Pinion driving unit
- Allow to grip the workpiece by open-close range 180° without any interference
- Magnetic sensor is available for open-close sensing



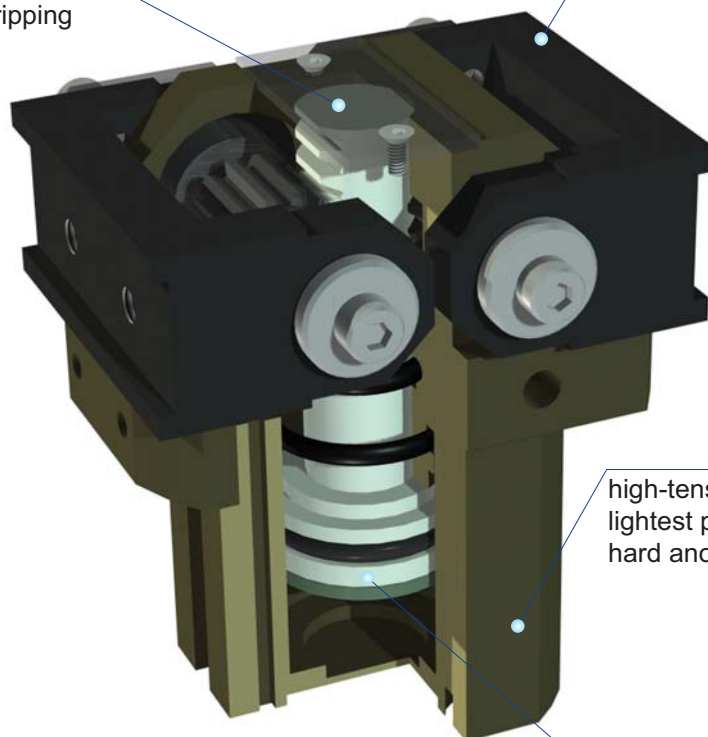
Rack & pinion type

Kinetics

pinion / toothed rack system, centric gripping

Gripping jaw

precise positioning of individual gripping jaws



Body

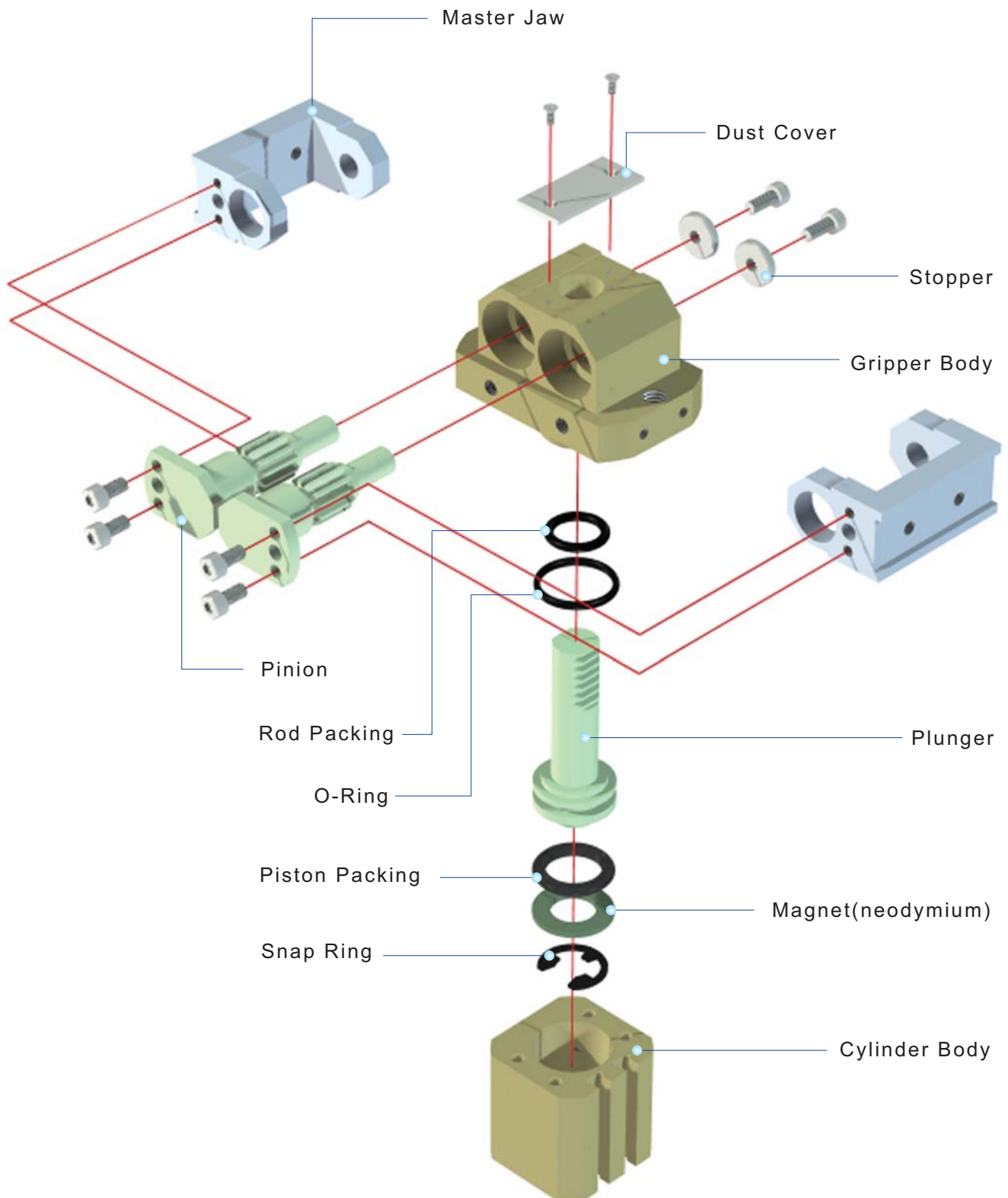
high-tensile aluminum body with lightest possible because of hard anodizing

Drive

double acting pneumatic cylinder

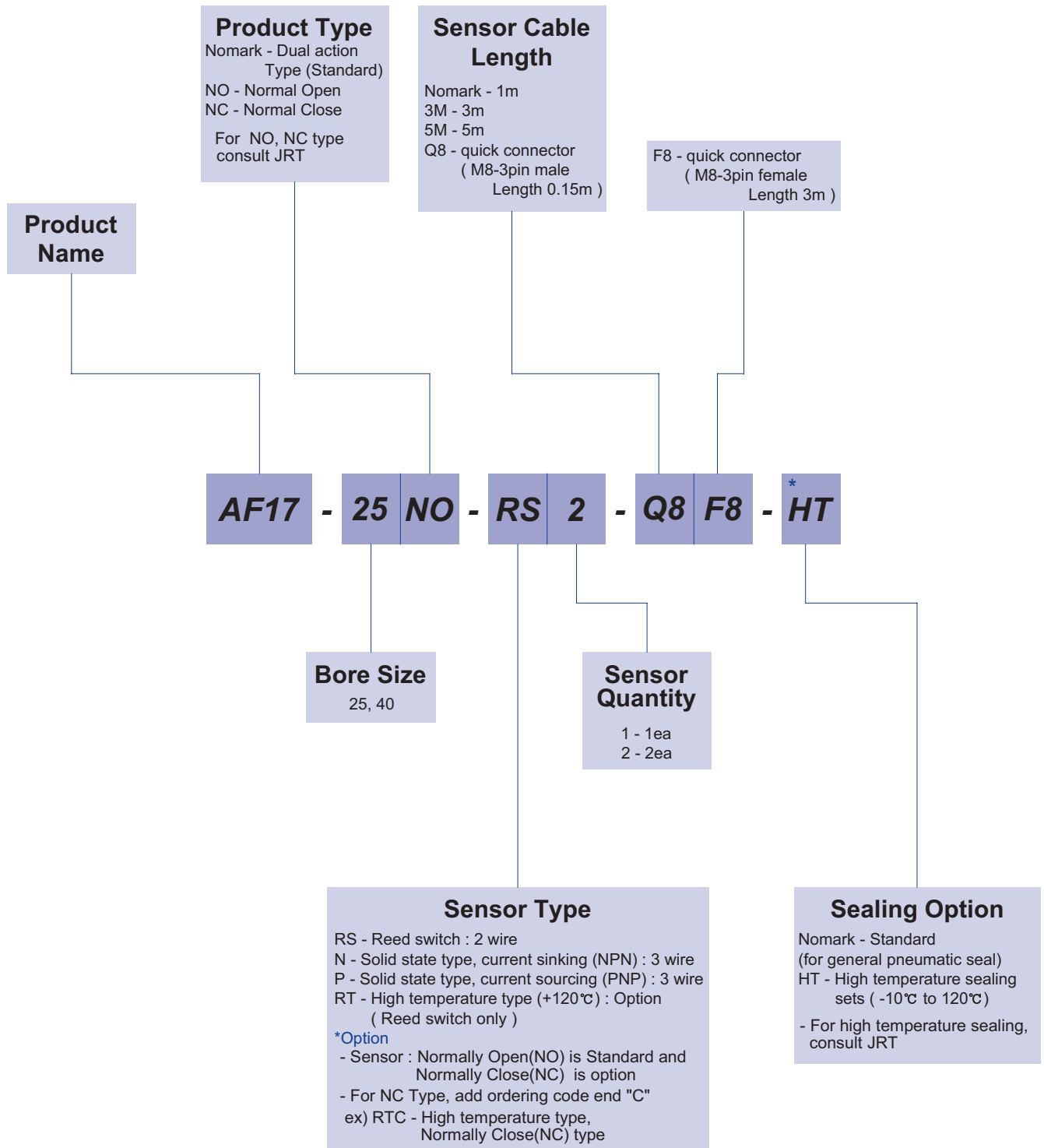
AF17

Exploded view



AF17

Ordering Code



The delivery of * mark option is longer than a standard, So inquire of JRT

AF17

Specification

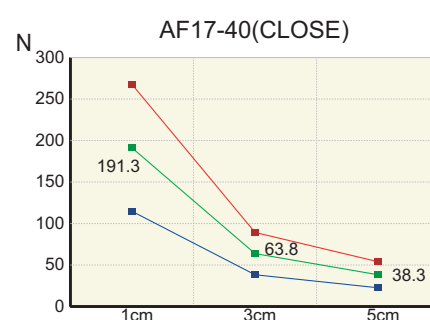
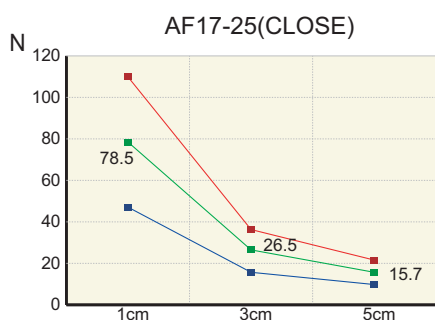
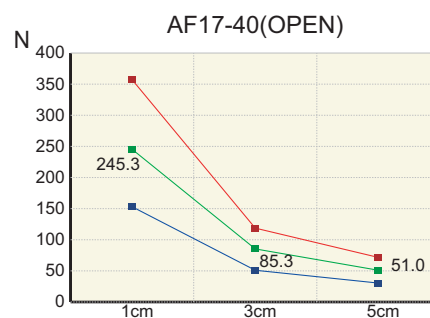
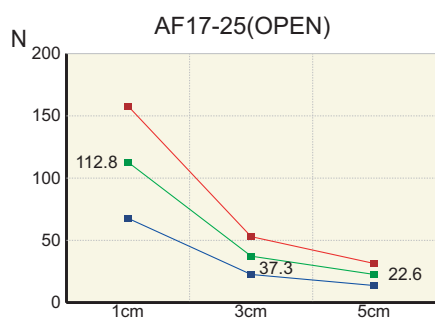
P=Air Pressure[bar] , L=Exertion length[mm]

Products Name	AF17-25	AF17-40	Unit
Working angle	0 to 180	0 to 180	degree
Weight	0.68	0.86	kg
Max. length of attach	50	50	mm
Fitting size	M5	PF(G) 1/8	
Gripping force:Open	22.56P/L	51.01P/L	N
Gripping force:Close	15.70P/L	38.26P/L	
Air consumption per cycle	8.3	21.2	cm ³
Closing / Opening time	0.01 / 0.01	0.01 / 0.02	sec
* Repeat accuracy	0.02	0.02	mm
Max.cycle per minute	60	60	
Operating pressure	3~7		bar
Ambient temperature	-5 to 60		°C
Lubrication	Needless		

* After 100 consecutive strokes to end positions

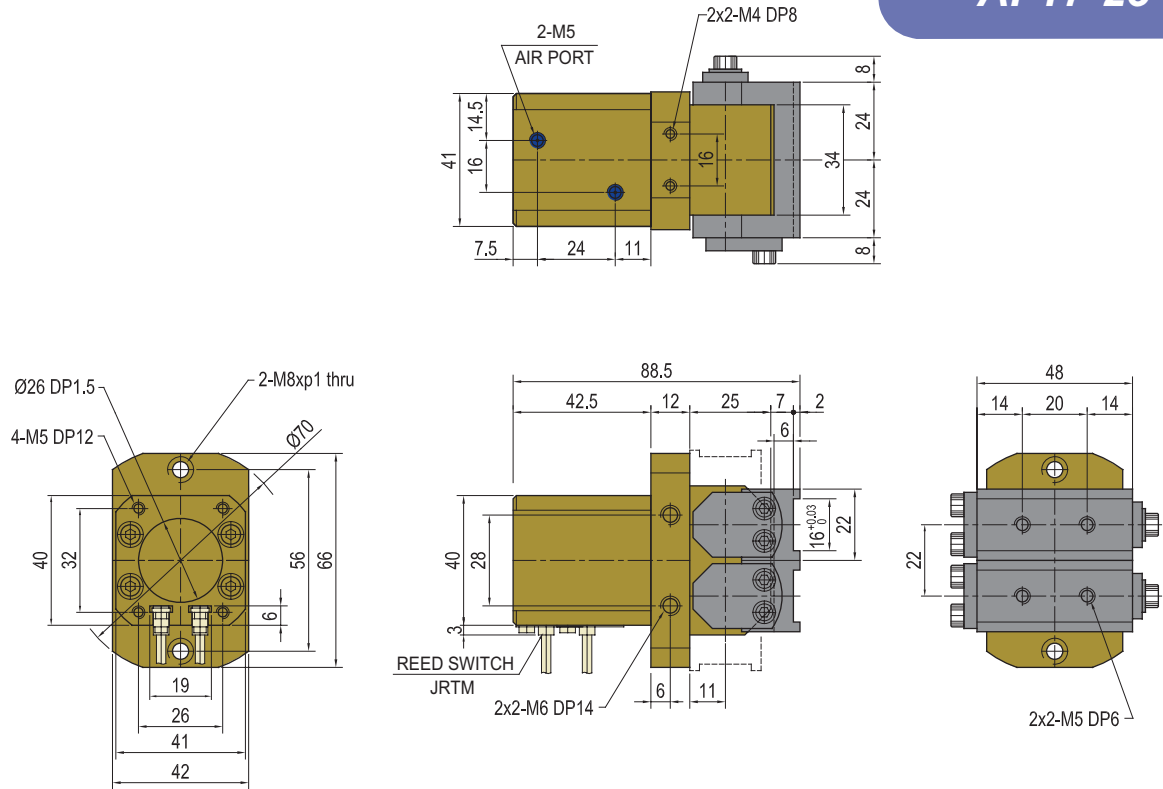
Gripping Force per exertion length

Legend : ■ 7[bar] ■ 5[bar] ■ 3[bar]

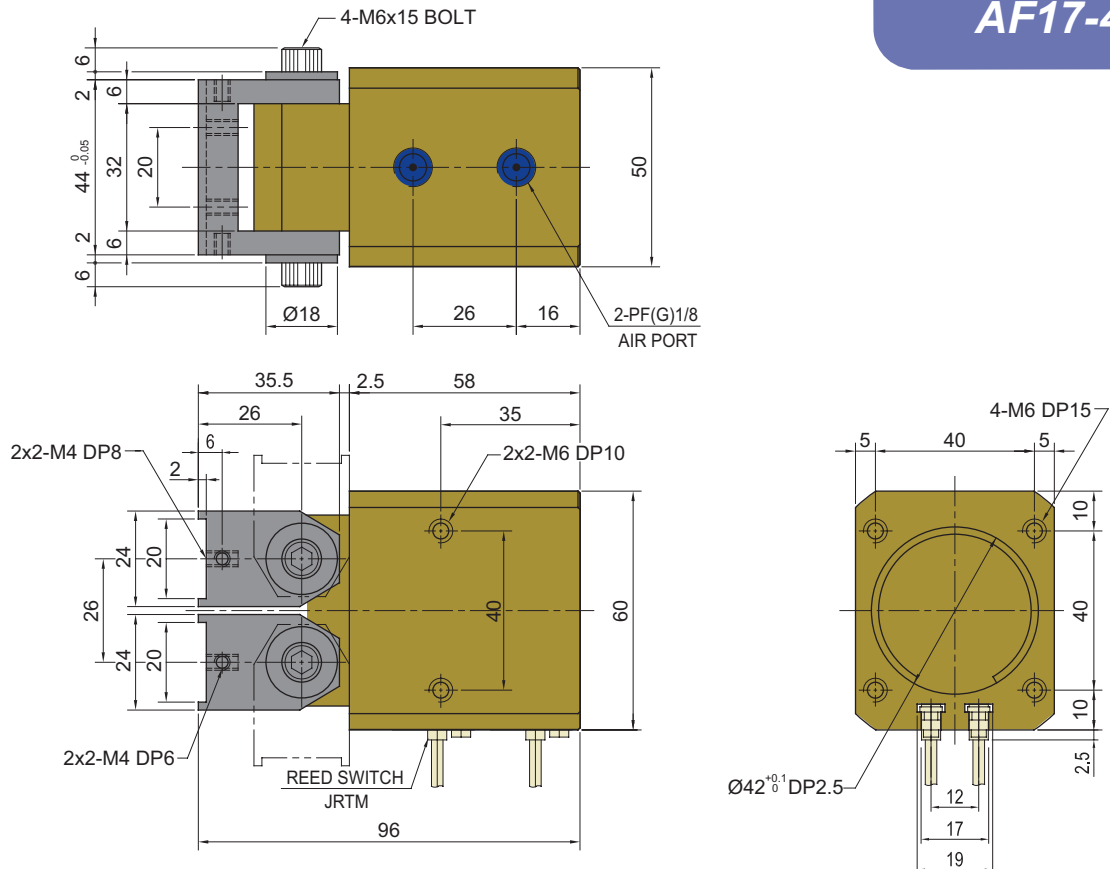


AF17

AF17-25



AF17-40



Notes

A large grid of dashed lines for taking notes, consisting of 20 columns and 30 rows. The grid is contained within a rounded rectangular border.