



DEUBLIN

Rotating Union for Air and Hydraulic Oil Service, DN 6 - 40

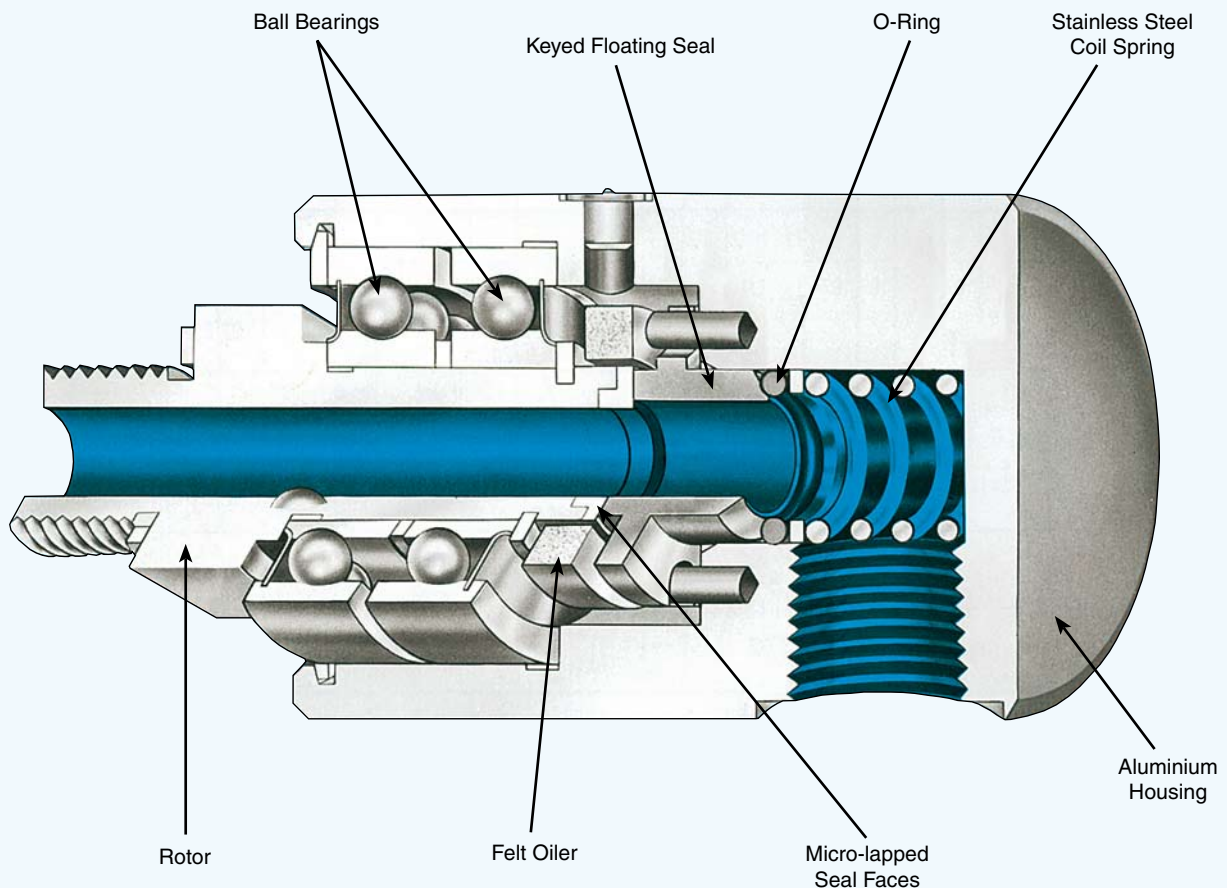
- monoflow design
- self-supported rotating union
- radial housing connection
- balanced mechanical seal
 - Carbon Graphite/hardened Tool Steel or
 - Carbon Graphite/Ceramic
- felt oiler in seal cavity for air service
- oiler for relubrication (3 - 5 drops/month)
- low torque
- weight optimised design
- aluminium housing
- stainless steel or steel rotor (respective of model)
- Lubrication Guide page 52

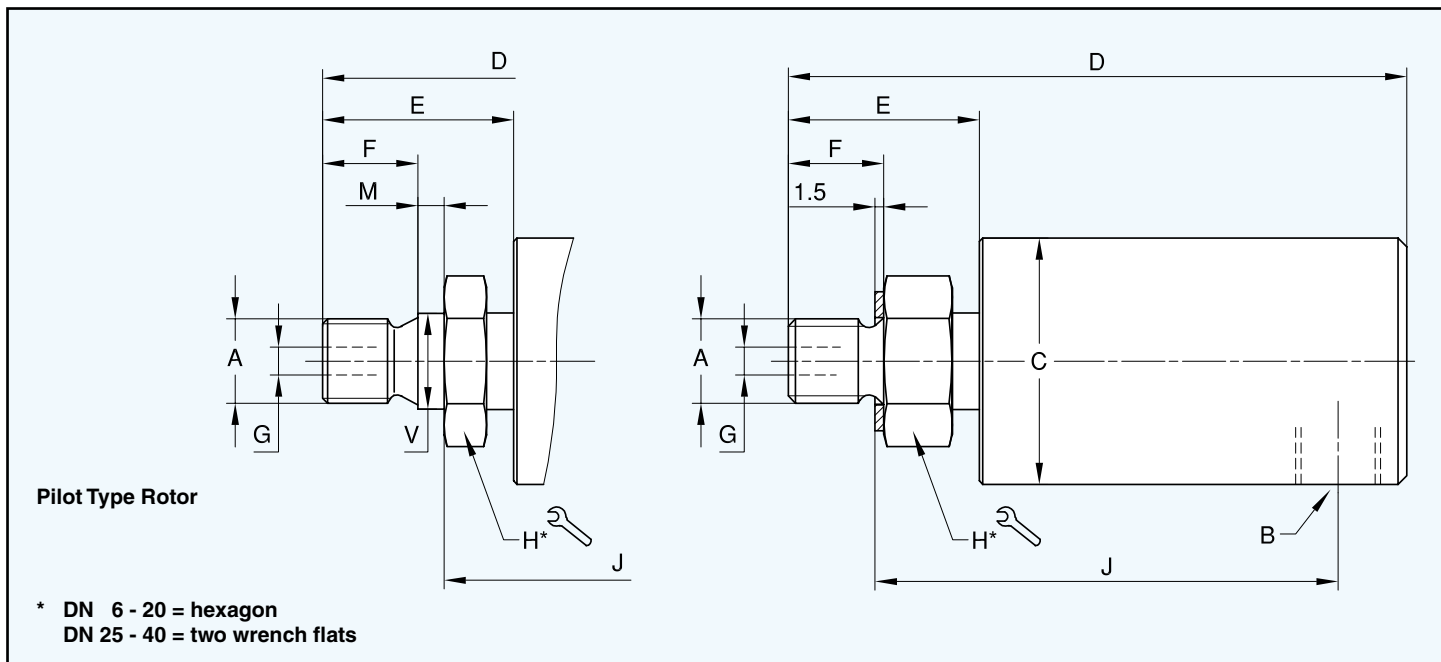
Operating Data

| | | |
|------------------------------|-----------|---------------------------------|
| Max. Air Pressure | 150 PSI | 10 bar |
| Max. Vacuum | 2" Hg | 7 kPa |
| Max. Hydraulic Pressure* | | |
| Model 1005 | 1,020 PSI | 70 bar |
| 1102 | 1,020 PSI | 70 bar |
| 1115 | 510 PSI | 35 bar |
| 1205 | 730 PSI | 50 bar |
| 2200 | 1,020 PSI | 70 bar |
| 250-094 | 1,020 PSI | 70 bar |
| 355-021 | 1,020 PSI | 70 bar |
| 452-000 | 730 PSI | 50 bar |
| Max. Speed Straight Threads* | 3,500 RPM | 3,500 min ⁻¹ |
| Model 250-094 | 3,500 RPM | 3,500 min ⁻¹ |
| 355-021 | 3,000 RPM | 3,000 min ⁻¹ |
| 452-000 | 2,500 RPM | 2,500 min ⁻¹ |
| Max. Temperature | 120 °C | > 120 °C consult DEUBLIN |


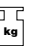
For further information please contact **DEUBLIN** or your local representative.

* Operation at max. pressure combined with max. speed is not permissible





Monoflow Rotating Union

| DN | B NPT | Ordering No. | A Rotor Connections | | C ∅ | D | E | F | G ∅ | H*  | J | M | V ∅ |  kg |
|----|----------|--------------|------------------------|----|--------|-----|----|----|--------|---|-----|----|--------|---|
| 6 | 1/8 | 1005-020-037 | M 10 x 1 | RH | 28,5 | 71 | 22 | 11 | 3,2 | 17 | 54 | - | - | 0,2 |
| | 1/8 | 1005-020-045 | M 10 x 1 | RH | 28,5 | 71 | 22 | 11 | 3,2 | 17 | 50 | 3 | 11 h6 | 0,2 |
| | 1/8 | 1005-020-049 | G 1/4 | RH | 28,5 | 71 | 22 | 13 | 3,2 | 17 | 52 | - | - | 0,2 |
| 8 | 1/4 | 1102-070-103 | G 1/4 | RH | 41 | 81 | 28 | 13 | 6,4 | 22 | 58 | - | - | 0,4 |
| | 1/4 | 1102-070-104 | G 1/4 | LH | 41 | 81 | 28 | 13 | 6,4 | 22 | 58 | - | - | 0,4 |
| 10 | 3/8 | 1115-000-205 | G 3/8 | RH | 44 | 99 | 26 | 16 | 8,7 | 24 | 71 | - | - | 0,7 |
| | 3/8 | 1115-000-200 | M 16 x 2 | RH | 44 | 99 | 26 | 16 | 8,7 | 24 | 71 | - | - | 0,7 |
| 15 | 1/2 | 1205-000-151 | G 1/2 | RH | 57 | 114 | 35 | 19 | 12,7 | 30 | 79 | - | - | 0,7 |
| | 1/2 | 1205-000-152 | G 1/2 | LH | 57 | 114 | 35 | 19 | 12,7 | 30 | 79 | - | - | 0,7 |
| | 1/2 | 1205-000-170 | M 20 x 1,5 | RH | 57 | 116 | 37 | 14 | 12,7 | 30 | 78 | 5 | 22 g6 | 0,7 |
| | 1/2 | 1205-000-171 | M 20 x 1,5 | LH | 57 | 116 | 37 | 14 | 12,7 | 30 | 78 | 5 | 22 g6 | 0,7 |
| | 1/2 | 2200-000-458 | M 27 x 1,5 | RH | 73 | 123 | 35 | 15 | 19 | 36 | 85 | 6 | 28 g6 | 1,4 |
| | 1/2 | 2200-000-459 | M 27 x 1,5 | LH | 73 | 123 | 35 | 15 | 19 | 36 | 85 | 6 | 28 g6 | 1,4 |
| | 1/2 | 2200-000-081 | M 35 x 1,5 | RH | 73 | 125 | 38 | 15 | 19 | 41 | 96 | - | - | 1,6 |
| | 1/2 | 2200-000-082 | M 35 x 1,5 | LH | 73 | 125 | 38 | 15 | 19 | 41 | 96 | - | - | 1,6 |
| | 1/2 | 2200-000-102 | G 3/4 | RH | 73 | 122 | 34 | 19 | 19 | 36 | 88 | - | - | 1,4 |
| 20 | 3/4 | 250-094-284 | G 3/4 | RH | 73 | 128 | 34 | 19 | 19 | 36 | 94 | - | - | 1,6 |
| | 3/4 | 250-094-285 | G 3/4 | LH | 73 | 128 | 34 | 19 | 19 | 36 | 94 | - | - | 1,6 |
| | 3/4 | 250-094-458 | M 27 x 1,5 | RH | 73 | 129 | 35 | 15 | 19 | 36 | 91 | 6 | 28 g6 | 1,6 |
| | 3/4 | 250-094-459 | M 27 x 1,5 | LH | 73 | 129 | 35 | 15 | 19 | 36 | 91 | 6 | 28 g6 | 1,6 |
| | 3/4 | 250-094-014 | M 35 x 1,5 | RH | 73 | 131 | 38 | 15 | 19 | 41 | 101 | - | - | 1,6 |
| | 3/4 | 250-094-015 | M 35 x 1,5 | LH | 73 | 131 | 38 | 15 | 19 | 41 | 101 | - | - | 1,6 |
| 25 | 1 | 355-021-222 | G 1 | RH | 83 | 150 | 42 | 22 | 25 | 36 | 108 | - | - | 2,1 |
| | 1 | 355-021-223 | G 1 | LH | 83 | 150 | 42 | 22 | 25 | 36 | 108 | - | - | 2,1 |
| | 1 | 355-021-235 | M 35 X 1,5 | RH | 83 | 144 | 35 | 15 | 25 | 36 | 108 | - | - | 2,1 |
| | 1 | 355-021-236 | M 35 X 1,5 | LH | 83 | 144 | 35 | 15 | 25 | 36 | 108 | - | - | 2,1 |
| | 1 | 355-021-315 | M 35 x 1,5 | RH | 83 | 167 | 59 | 29 | 25 | 36 | 103 | 12 | 40 g6 | 2,1 |
| | 1 | 355-021-316 | M 35 x 1,5 | LH | 83 | 167 | 59 | 29 | 25 | 36 | 103 | 12 | 40 g6 | 2,1 |
| 40 | 1 1/2 | 452-000-198 | G 1 1/2 | RH | 108 | 206 | 71 | 29 | 38 | 55 | 147 | - | - | 4,5 |
| | 1 1/2 | 452-000-199 | G 1 1/2 | LH | 108 | 206 | 71 | 29 | 38 | 55 | 147 | - | - | 4,5 |
| | 1 1/2 | 452-000-200 | M 50 x 1,5 | RH | 108 | 200 | 66 | 23 | 38 | 55 | 147 | - | - | 4,5 |
| | 1 1/2 | 452-000-201 | M 50 x 1,5 | LH | 108 | 200 | 66 | 23 | 38 | 55 | 147 | - | - | 4,5 |

DEUBLIN Rotating Unions In-the-Shaft Mounted

To meet the specifications of engineering designs requiring minimum overhang, **DEUBLIN** can provide unions which can be mounted in the shaft. With these models the only extensions beyond the end of the shaft are the supply line connections.

Detailed drawings suggesting the application of these **DEUBLIN** Unions to your installation will be submitted on request and without obligation.

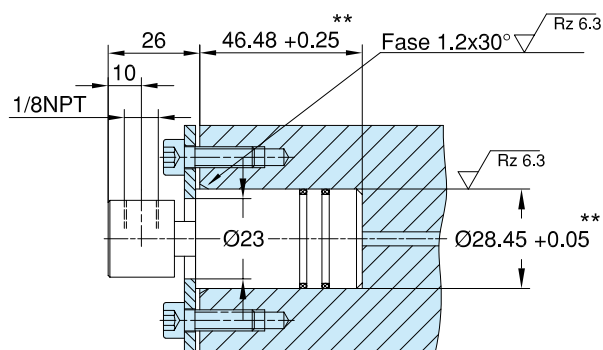
For additional models of In-the-Shaft Mounted Rotating Unions refer to page 33.

Model 1005-000-001, DN 6

Operating Data

| | | |
|-------------------------|-----------|-------------------------|
| Max. Air Pressure | 150 PSI | 10 bar |
| Max. Hydraulic Pressure | 1,020 PSI | 70 bar |
| Max. Temperature | 250° F | 120° C |
| Max. Speed | 3,500 RPM | 3.500 min ⁻¹ |

Available with all 1005 rotors shown on page 35.

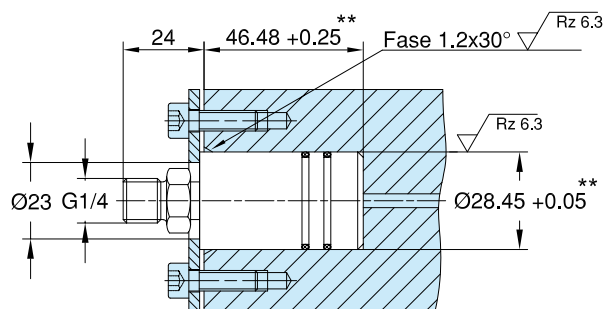


Model 1005-000-049, DN 6

Operating Data

| | | |
|-------------------------|-----------|-------------------------|
| Max. Air Pressure | 150 PSI | 10 bar |
| Max. Hydraulic Pressure | 1,020 PSI | 70 bar |
| Max. Temperature | 250° F | 120° C |
| Max. Speed | 3,500 RPM | 3.500 min ⁻¹ |

Available with all 1005 rotors shown on page 35.

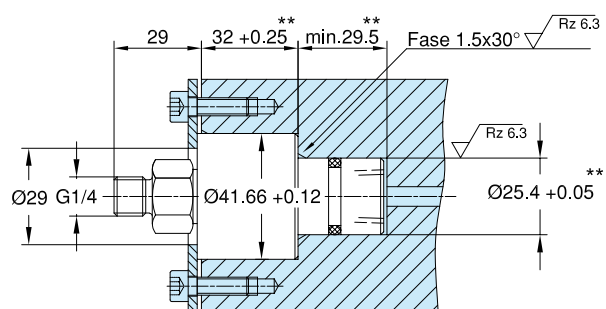


Model 1102-025-103, DN 8

Operating Data

| | | |
|-------------------------|-----------|-------------------------|
| Max. Air Pressure | 150 PSI | 10 bar |
| Max. Hydraulic Pressure | 1,020 PSI | 70 bar |
| Max. Temperature | 250° F | 120° C |
| Max. Speed | 3,500 RPM | 3.500 min ⁻¹ |

Available with all 1102 rotors shown on page 35.

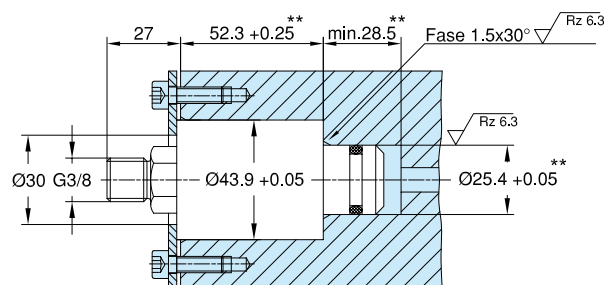


Model 1115-130-205, DN 10

Operating Data

| | | |
|-------------------------|-----------|-------------------------|
| Max. Air Pressure | 150 PSI | 10 bar |
| Max. Hydraulic Pressure | 510 PSI | 35 bar |
| Max. Temperature | 250° F | 120° C |
| Max. Speed | 3,500 RPM | 3.500 min ⁻¹ |

Available with all 1115 rotors shown on page 35.



** Dimensions of Shaft Bore