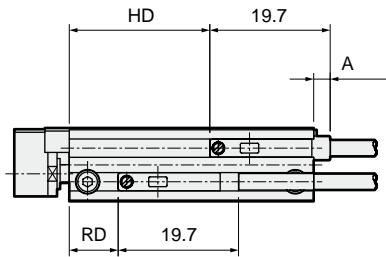


LCM Series common switch installation, projection dimensions

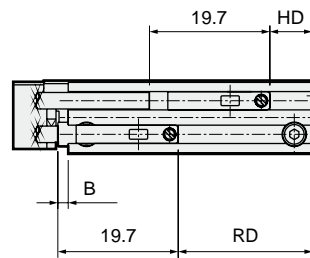
- For rear lead wire outlet



Bore size (mm)	Stroke length	RD	HD	A	
				1 color indicator type	2 color indicator type
φ 4.5	5	12	17	2.7	7.2
	10	7	17		
φ 6	5	13	18		
	10	8	18		
	15	8	23		
φ 8	5	13	18		
	10	8	18		
	15	13	28		
	20	8	28		

(Projecting length for axial lead wire)

- For front lead wire outlet



Bore size (mm)	Stroke length	RD	HD	B	
				1 color indicator type	2 color indicator type
φ 4.5	5	12	7	-	-
	10	17		1.7	6.2
φ 6	5	12		-	-
	10	17		1.7	6.2
	15	22		1.7	6.2
φ 8	5	12		-	-
	10	17		1.7	6.2
	15	22		-	-
	20	27		1.7	6.2

(Projecting length for axial lead wire)

- SCP*2
- CMK2
- CMA2
- SCM
- SCG
- SCA2
- SCS
- CKV2
- CA/OV2
- SSD
- CAT
- MDC2
- MVC
- SMD2
- MSD*
- FC*
- STK
- ULK*
- JSK/M2
- JSG
- JSC3
- USSD
- USC
- JSB3
- LMB
- STG
- STS/L
- LCS
- LCG
- LCM**
- LCT
- LCY
- STR2
- UCA2
- HCM
- HCA
- SRL2
- SRG
- SRM
- SRT
- MRL2
- MRG2
- SM-25
- CAC3
- UCAC
- RCC2
- MFC
- SHC
- GLC

Ending

Linear slide cylinder
Combined functions