



**BOSCHERT**

*Das Original!*



[www.boschert.de](http://www.boschert.de)  
[infokl@boschert.de](mailto:infokl@boschert.de)



## Müşterilerimizle 65 Yılı Aşkın Süren Ortaklık

50 yıldan beri müşteri hizmetleri, güvenilirlik, kalite ve esneklik şirketimizin temelini oluşturmaktadır. Müşterimiz olarak siz, işinizin başlangıcından itibaren ekibimizin bir parçası olursunuz. İhtiyaçlarınızı karşılamak için tüm dikkatimizi size veririz. Sizi dinleriz. Harekete geçip, geliştirmeler yapıp en kısa sürede talebinize cevap veririz.

Uygulamanızdaki teknik aksaklıkların giderilmesi için bize güvenebilirsiniz, bunun için en doğru yerdesiniz. Teknisyenlerimiz ve mühendislerimiz sizi en iyi ve en güvenli çözümlerle buluştururlar. Hizmetimizle emrinizdeyiz.

Amacımız, bütün müşterilerimize dünyanın her yerinde olası en iyi çözümü sunmaktır. Yarım yüzyıldan fazla zamandır başarımızın sırrı da işte budur. Sizi müşteri olarak karşılıyoruz ve sizi ekibimize davet ederiz. Alanımızda standartları biz belirleriz. Biz dünyanın her yerinde bir numarayız.

Sizin için daima buradayız.

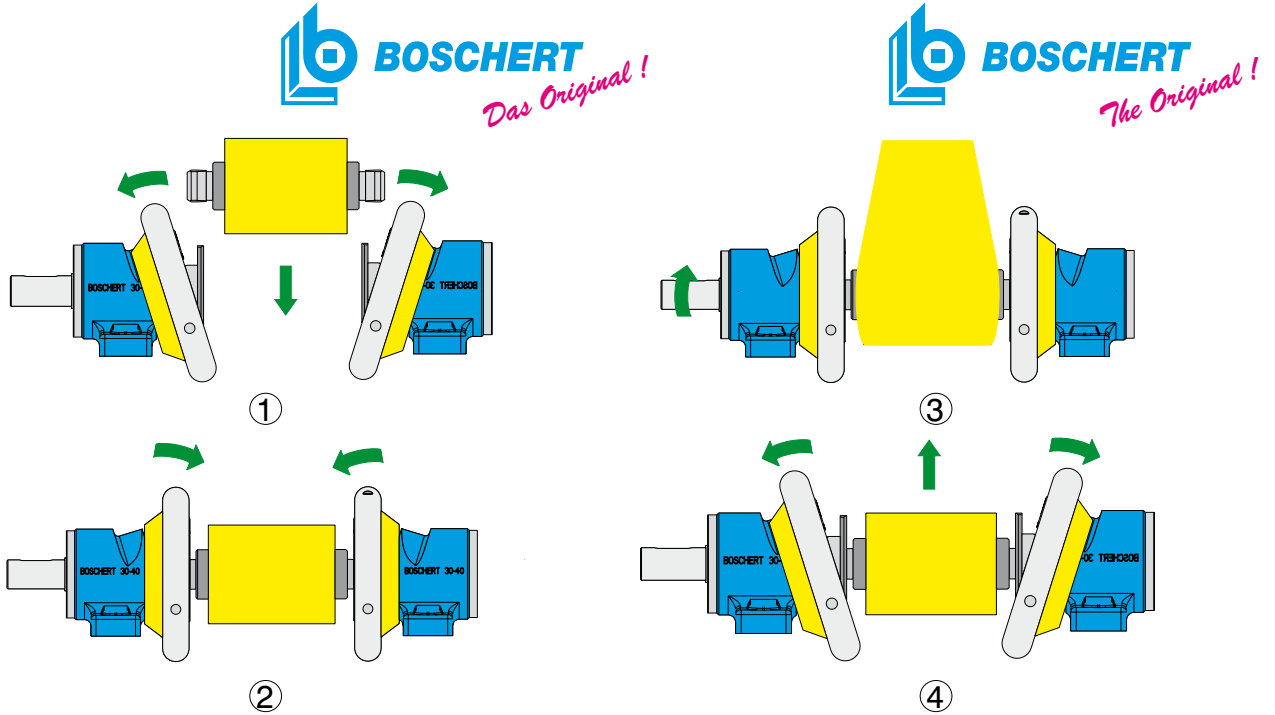
## Over 65 Years of partnership with our customers

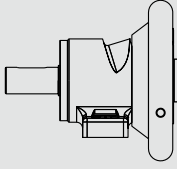
Customer service, reliability, quality and flexibility are the foundation of our company for more than 50 years. As a customer you become a part of our team from the beginning. You have our complete attention to fulfill your requirements. We listen to you. We act, innovate, and react quickly.

With the assurance that you have found the best source, you can trust to us the solution of the technical problems of your application. You can expect our technicians and engineers to provide you with the best and safest solution for your application. We have decades of service at your command.

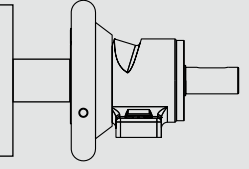
It is our goal to offer all our customers, all over the world, the best solution possible. This is the secret to our success for over half a century. We welcome you as a customer and invite you to join our team. We are the standard of the industry. We are number one in all the world!

We are always available for you.



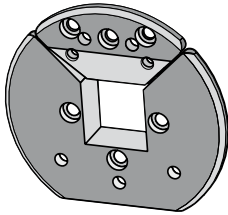


# Emniyet Yatakları

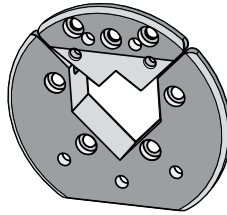


Model Model	Maks. Bobin ağırlığı / kg (max. beam weight / lbs)	Maks. Tork / Nm (max. torque / ft/lb)	Kare mil / mm (Square bar / inch)	C Modeli Type C	VT Modeli Type VT	Aşınma Levhası Wear plates
Mini	150 (330)	40 (29.5)	14-20 (0.5512 - 0.7874)	x		
19-25	400 (880)	120 (88.5)	19-25 (0.748 - 0.9843)	x		
22-30	800 (1760)	180 (132.8)	22-30 (0.8661 - 1.1811)	x	x	
30-40	1600 (3530)	350 (258.1)	30-40 (1.1811 - 1.5748)	x	x	
40-50	2800 (6170)	1100 (800)	40-50 (1.5748 - 1.9685)	x	x	
50-80	7000 (15430)	2350 (1700)	50-80 (1.9685 - 3.1496)		x	
80-120	12000 (24460)	10000 (7230)	80-120 (3.1496 - 4.7244)		x	
120-180	22000 (48500)	20000 (14468)	120-180 (4.7244 - 7.0866)			x
170-230	64000 (141090)	41000 (29660)	170-230 (6.6929 - 9.0551)			x

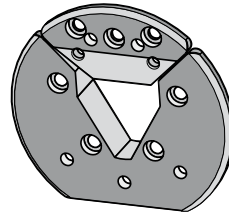
## Farklı mil ucu şekilleri Different insert shapes



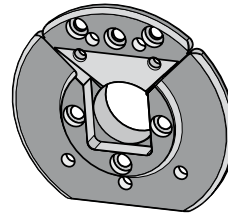
VT 1



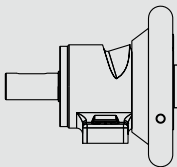
VT 2



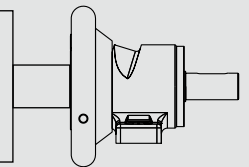
VT 6



VT 7

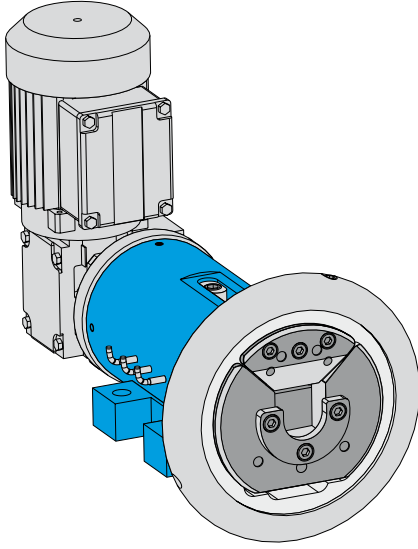
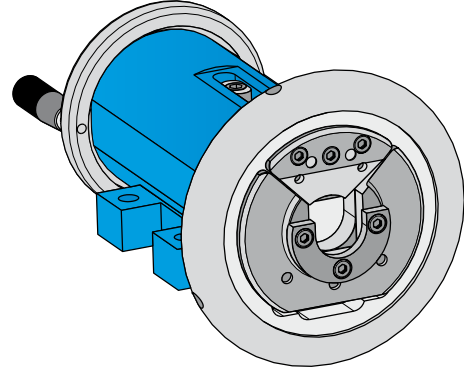
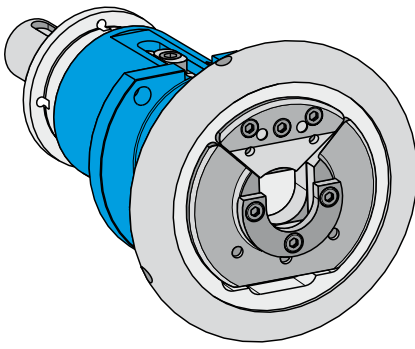


# Safety chucks





# Kayar Yataklar



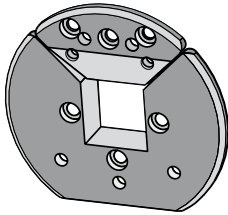
Model Model	Maks. Bobin ağırlığı / kg (max. beam weight / lbs)	Maks. Tork / Nm (max. torque / ft/lb)	Kare mil / mm (Square bar / inch)	VT Modeli Type VT
22-30	800 (1760)	180 (132.8)	22-30 (0.8661 - 1.1811)	x
30-40	1400 (3090)	350 (258.1)	30-40 (1.1811 - 1.5748)	x
40-50	2800 (6170)	1100 (800)	40-50 (1.5748 - 1.9685)	x

Kayma Mesafesi: 50 mm / 100 mm  
Adjustment: 50 mm / 100 mm

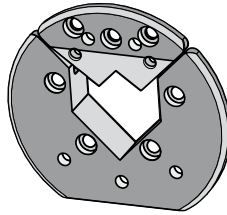
Alternatif : motorlu ayar

Option: motorized adjustment

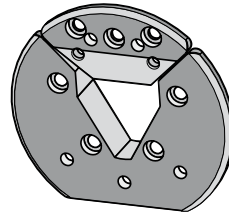
**Farklı mil ucu şekilleri**  
**Different insert shapes**



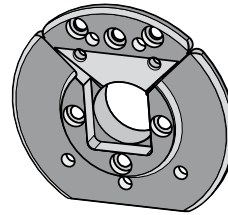
VT 1



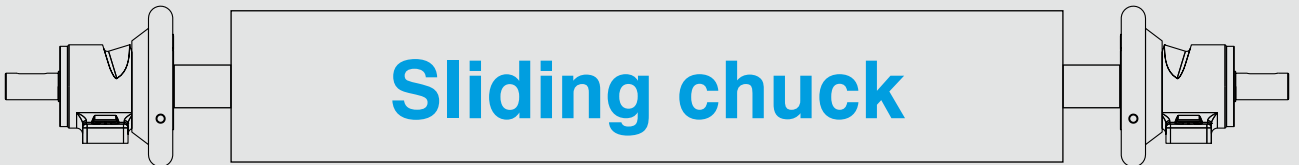
VT 2



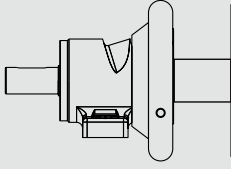
VT 6



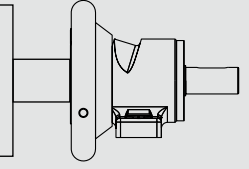
VT 7



# Sliding chuck

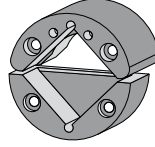


## Pnomatik Açılıp Kapanan Yataklar



**A Serisi**  
**A series**

Model Model	Maks. Bobin ağırlığı / kg (max. beam weight / lbs)	Maks. Tork / Nm (max. torque / ft/lb)	Kare mil / mm (Square bar / inch)	VT Modeli Type VT
A40	1600 (3530)	350 (250)	40 (1.5748)	x
A50	2800 (6170)	1100 (800)	50 (1.9658)	x
A80	7000 (15430)	2350 (1700)	80 (3.1496)	x

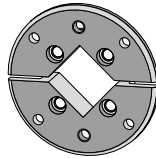


VT 2

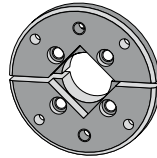


**P Serisi**  
**P series**

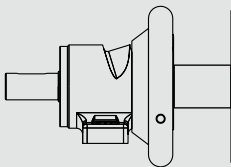
Model Model	Maks. Bobin ağırlığı / kg (max. beam weight / lbs)	Maks. Tork / Nm (max. torque / ft/lb)	Kare mil / mm (Square bar / inch)	VT Modeli Type VT
A40	1600 (3530)	350 (250)	40 (1.5748)	x
A50	2800 (6170)	1100 (800)	50 (1.9658)	x



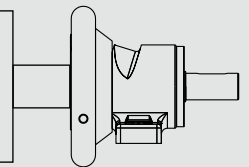
VT2



VT 7



## Pneumatic chuck





Frenler	ESB	DSB	Multi
Maks. Fren torku	30 - 110 Nm	30 - 110 Nm	120 - 1200 Nm
Emniyet yatak:	Mini / 19-25 / 22-30 / 30-40 / 40-50 / 50-80 / Kayar Yataklar / A Serisi / P Serisi		

Brakes	ESB	DSB	Multi
max. brake torque	22 - 800 ft/lb	22 - 800 ft/lb	87 - 870 ft/lb
for Safety chuck:	Mini / 19-25 / 22-30 / 30-40 / 40-50 / 50-80 / Sliding Chucks / Series A / Series P		



## ESB / DSB

Tek balatalı ve çift balatalı frenler emniyet yataklarının temel uygulamalarında kullanılabilir.

Farklı çeşitlerde fren sistemleri mevcuttur

- manuel fren sistemi, pnomatik fren sistemi, membran silindirli pnomatik fren sistemi

Single disc brakes and Double disc brakes are usable for simple applications with safety chucks.

The brake system is available in different versions

- manual, pneumatical, pneumatical with membrane cylinder

## Multi

- farklı tork değerlerine ve güç koşullarına kolayca uyum sağlayabilir
- fren balataları hızlı ve kolay değişebilir
- soğutmalı fren kasağı
- ödediğiniz bedeli hak eden kalite
- tork ve performans ihtiyaçlarınıza göre geniş ürün yelpazesi
- kolay stoklanabilir standart parçalar sayesinde bakımı kolay ve daha az maliyetli.
- özel dizaynı ile düşük güç ve titreşim düzeyi
- sadece bir yataklama freninden ziyade bütün uygulamalarınız için kullanılabilir bir fren.
- easily adaptable to different torque ranges and power requirements
- quick and easy change out of the brake linings
- ventilated brake rotor
- adaptable to many different mounting arrangements
- better value for your purchase price
- wide range of torque and performance requirements
- our huge inventory of these standard parts makes maintenance easy and less expensive
- brake pad dampeners reduce noise and vibration
- more than a safety chuck brake - a brake for use in all applications

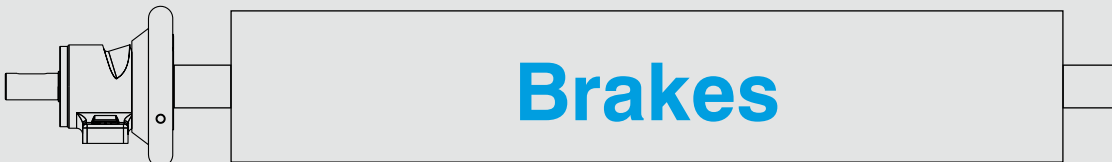


Bütün frenlerimiz Boschert yataklarına uyumlu olacak şekilde ayarlanmıştır.

Daha fazla bilgi için lütfen kataloğumuza göz atın ya da bizimle iletişime geçin.

All our brakes are adjusted to fit to Boschert Chucks.

For more information please have a look at the catalog or contact us.





# Easy Wind

## Easy Wind Easy Wind Twin Easy Wind Sensitive

### “Tak ve Kullan”

#### Gergi Kontrolü

- Kolay kurulum
- Çapın her yerinde sabit gergi
- Silindir çapını ölçmek için ultrasonik sensör
- Kolay kullanım

### The „Plug and Play“

#### Tension Control

- easy installation
- constant tension over whole diameter
- ultrasonic sensor measuring the roll diameter
- simple to use

### **Easy Wind:**

Bir silindir için standart çözüm  
Standard solution for one roll

### **Easy Wind Twin:**

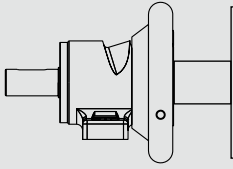
İki silindir için çözüm (iki sensör, bir kontrol ünitesi)  
The solution for two rolls ( two sensors, one control unit )

### **Easy Wind Sensitive:**

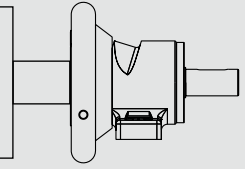
Her fren balatası ayrı ayrı kapanıp açılabilir.  
Each brake caliper can be shut on or off



# Easy Wind



# Emniyet Yatak Ekibi Safety chuck team



**Helmut Turowski**

Satış Müdürü  
Sales manager

Phone: + 49 (0) 7621 - 9593 - 36  
E-mail: h.turowski@boschert.de



**Silvia Schwarzwälder**

Emniyet Yataklar Satış Sorumlusu  
Sales Safety Chucks

Phone: + 49 (0) 7621 - 9593 - 26  
E-mail: s.schwarzwaelder@boschert.de



**Sabrina Wehrle**

Emniyet Yataklar Satış Sorumlusu  
Sales Safety Chucks

Phone: + 49 (0) 7621 - 9593 - 74  
E-mail: s.wehrle@boschert.de



**Antoine Pelayo**

Tasarımcı  
Designer

Phone: + 49 (0) 7621 - 9593 - 37  
E-mail: a.pelayo@boschert.de



**BOSCHERT** GmbH + Co. KG  
Unternehmensbereich Wickeltechnik  
Division wind technology

Mattenstrasse 1  
79541 Lörrach - Hauingen  
Germany

Phone: + 49 (0) 7621 - 9593 0  
Fax: + 49 (0) 7621 - 5518 4  
E-mail: infokl@boschert.de  
Internet: www.boschert.de

