

**STAUFF Multi-Line Clamps**  
Type MLC



## Product Description

Multi-Line Clamps of the Type MLC from STAUFF enable the simple and at the same time safe fastening of either 2, 3, 4 or 6 individual lines with only one clamp body.

Based on the Original STAUFF Clamps of the Standard Series according to DIN 3015 (Part 1), they are available in 3 different sizes for all common metric and imperial diameters from 6 mm to 25,4 mm (1/4" to 1"). Alternative outside diameters and various diameter combinations are available on request.

Clamp bodies are made of Polypropylene (PP), Polyamide (PA) or Polyamide with preventive fire protection (PA-V0) as standard.

In addition to Carbon Steel (phosphated, STAUFF material code W2 or Zinc/Nickel-plated, STAUFF material code W3), Stainless Steel V4A - 1.4401 / 1.4571 or AISI 316 / 316 Ti (STAUFF material code W5) is used as material for metal parts such as cover plates and welding plates. Alternative materials and surface finishings are available upon request.

All threaded parts are available with Metric ISO thread or unified coarse (UNC) thread.

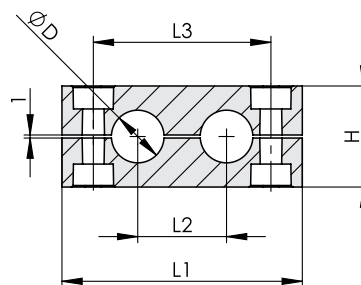
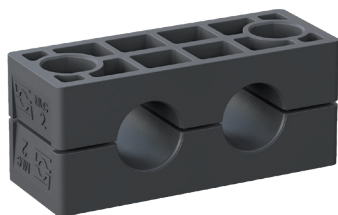
## Features

- For the safe fastening of tubes, pipes, hoses, cables and other components
- Vibration- and noise reduction as an important contribution to preventive environmental protection, health and safety
- Orderly and clear installation of lines
- Quick and easy assembly
- Reduced assembly times due to fewer individual components
- Compact and thus space-saving and weight-reducing design
- Can be combined with selected metal parts of the Standard Series according to DIN 3015 (Part 1), including:
  - Hexagon Head Bolts Type AS
  - Stacking Bolts Type AF and Safety Locking Plates Type SIG
  - Hexagon Rail Nuts Type SM and Mounting Rails Type TS
  - Channel Rail Adaptors Type CRA
  - and more



### Clamp Body Multi-Line Clamps

Smooth Inside Surface with Tension Clearance  
Type MLC (for 2 lines)



#### Ordering Codes

##### Clamp Body

\*MLC-\*1-\*02B-\*06-\*PP-\*HV

One clamp body is consisting of two clamp halves.

- \* Clamp Type **MLC**
- \* STAUFF Group **1**
- \* Number of lines and bolts **02B**
- \* Exact outside diameter Ø D (mm) **06**
- \* Material code (see below) **PP**
- \* Inside Surface Type  
Smooth Inside Surface (Standard Option) **HV**  
Profiled Inside Surface (Upon Request) **without**

#### Standard Materials



##### Polypropylene

Colour: Black

Material code: **PP**



##### Polyamide

Colour: Black

Material code: **PA**



##### Fire-Proof Clamp Body Material made of Polyamide

Colour: Black

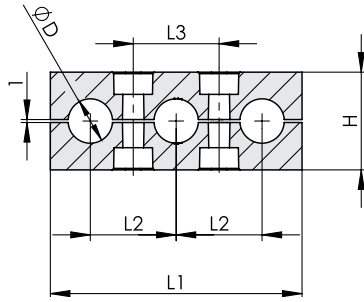
Material code: **PA-VO**

Group	Outside Diameter Pipe / Tube Ø D		Dimensions (mm/in)				Number of Bolts (B)	Ordering Code Standard Option (2 Clamp Halves) (** = Material)
	(mm)	(in)	L1	L2	L3	H		
1	6						2	MLC-1-02B-06-**-HV
	6,4							MLC-1-02B-06.4-**-HV
	8		60,5	20	40	27		MLC-1-02B-08-**-HV
	9,5		2.38	.79	1.57	1.06		MLC-1-02B-09.5-**-HV
	10	1/8						MLC-1-02B-10-**-HV
	12							MLC-1-02B-12-**-HV
2	10						2	MLC-2-02B-10-**-HV
	12							MLC-2-02B-12-**-HV
	12,7							MLC-2-02B-12.7-**-HV
	13,5	1/4	78,5	29	58	33		MLC-2-02B-13.5-**-HV
	14		3.09	1.14	2.28	1.30		MLC-2-02B-14-**-HV
	15							MLC-2-02B-15-**-HV
	16							MLC-2-02B-16-**-HV
	17,2							MLC-2-02B-17.2-**-HV
	18							MLC-2-02B-18-**-HV
	15							MLC-3-02B-15-**-HV
3	16						2	MLC-3-02B-16-**-HV
	17,2	3/8						MLC-3-02B-17.2-**-HV
	18							MLC-3-02B-18-**-HV
	19							MLC-3-02B-19-**-HV
	20		92,5	36	72	37		MLC-3-02B-20-**-HV
	21,3	1/2	3.64	1.42	2.83	1.46		MLC-3-02B-21.3-**-HV
	22							MLC-3-02B-22-**-HV
	23							MLC-3-02B-23-**-HV
	25							MLC-3-02B-25-**-HV
	25,4							MLC-3-02B-25.4-**-HV

Additional outside diameters and various diameter combinations are available upon request. Please contact STAUFF for further information.

See pages 154 - 157, Catalogue 1 - STAUFF Clamps for material properties and technical information.

Alternative materials are available upon request. Please contact STAUFF for further information.



**Clamp Body Multi-Line Clamps**  
**Smooth Inside Surface with Tension Clearance**  
**Type MLC (for 3 lines)**



Group	Outside Diameter Pipe / Tube		Dimensions (mm/in)				Number of Bolts (B)	Ordering Code Standard Option (2 Clamp Halves) (** = Material)
	Ø D (mm)	(in)	L1	L2	L3	H		
1	6						2	MLC-1-03B-06-**-HV
	6,4							MLC-1-03B-06.4-**-HV
	8		56	20	20	27		MLC-1-03B-08-**-HV
	9,5		2.20	.79	.79	1.06		MLC-1-03B-09.5-**-HV
	10	1/8						MLC-1-03B-10-**-HV
	12							MLC-1-03B-12-**-HV
2	10						2	MLC-2-03B-10-**-HV
	12							MLC-2-03B-12-**-HV
	12,7							MLC-2-03B-12.7-**-HV
	13,5	1/4	85	29	29	33		MLC-2-03B-13.5-**-HV
	14		3.35	1.14	1.14	1.30		MLC-2-03B-14-**-HV
	15							MLC-2-03B-15-**-HV
	16							MLC-2-03B-16-**-HV
	17,2	3/8						MLC-2-03B-17.2-**-HV
	18							MLC-2-03B-18-**-HV
	15							MLC-3-03B-15-**-HV
3	16						MLC-3-03B-16-**-HV	
	17,2						MLC-3-03B-17.2-**-HV	
	18						MLC-3-03B-18-**-HV	
	19						MLC-3-03B-19-**-HV	
	20		106	36	36	37	MLC-3-03B-20-**-HV	
	21,3	1/2	4.17	1.42	1.42	1.46	MLC-3-03B-21.3-**-HV	
	22						MLC-3-03B-22-**-HV	
	23						MLC-3-03B-23-**-HV	
	25						MLC-3-03B-25-**-HV	
	25,4						MLC-3-03B-25.4-**-HV	

Additional outside diameters and various diameter combinations are available upon request. Please contact STAUFF for further information.

### Ordering Codes

#### Clamp Body

**\*MLC-\*1-\*03B-\*06-\*PP-\*HV**

One clamp body is consisting of two clamp halves.

- \* Clamp Type **MLC**
- \* STAUFF Group **1**
- \* Number of lines and bolts **03B**
- \* Exact outside diameter Ø D (mm) **06**
- \* Material code (see below) **PP**
- \* Inside Surface Type
  - Smooth Inside Surface (Standard Option) **HV**
  - Profiled Inside Surface (Upon Request) **without**

#### Standard Materials

**Polypropylene**  
 Colour: Black  
 Material code: **PP**

**Polyamide**  
 Colour: Black  
 Material code: **PA**

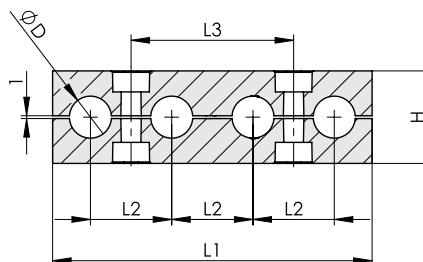
**Fire-Proof Clamp Body Material made of Polyamide**  
 Colour: Black  
 Material code: **PA-V0**

See pages 154 - 157, Catalogue 1 - STAUFF Clamps for material properties and technical information.

Alternative materials are available upon request. Please contact STAUFF for further information.

### Clamp Body Multi-Line Clamps

Smooth Inside Surface with Tension Clearance  
Type MLC (for 4 lines)



#### Ordering Codes

##### Clamp Body

\*MLC-\*1-\*04B-\*06-\*PP-\*HV

One clamp body is consisting of two clamp halves.

- \* Clamp Type **MLC**
- \* STAUFF Group **1**
- \* Number of lines and bolts **04B**
- \* Exact outside diameter Ø D (mm) **06**
- \* Material code (see below) **PP**
- \* Inside Surface Type  
Smooth Inside Surface (Standard Option) **HV**  
Profiled Inside Surface (Upon Request) **without**

#### Standard Materials



**Polypropylene**  
Colour: Black  
Material code: **PP**



**Polyamide**  
Colour: Black  
Material code: **PA**



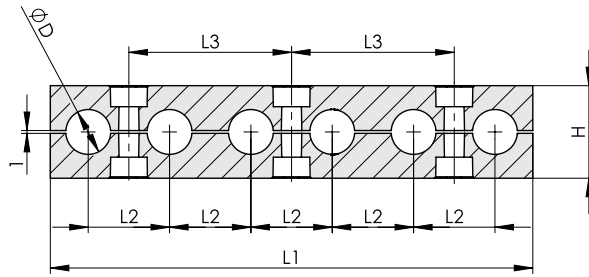
**Fire-Proof Clamp Body Material made of Polyamide**  
Colour: Black  
Material code: **PA-VO**

Group	Outside Diameter Pipe / Tube Ø D		Dimensions (mm/in)				Number of Bolts (B)	Ordering Code Standard Option (2 Clamp Halves) (** = Material)
	(mm)	(in)	L1	L2	L3	H		
1	6						2	MLC-1-04B-06-**-HV
	6,4							MLC-1-04B-06.4-**-HV
	8		76	20	40	27		MLC-1-04B-08-**-HV
	9,5		2.99	.79	1.57	1.06		MLC-1-04B-09.5-**-HV
	10	1/8						MLC-1-04B-10-**-HV
	12							MLC-1-04B-12-**-HV
2	10						2	MLC-2-04B-10-**-HV
	12							MLC-2-04B-12-**-HV
	12,7							MLC-2-04B-12.7-**-HV
	13,5	1/4	114	29	58	33		MLC-2-04B-13.5-**-HV
	14		4.49	1.14	2.28	1.30		MLC-2-04B-14-**-HV
	15							MLC-2-04B-15-**-HV
	16							MLC-2-04B-16-**-HV
	17,2	3/8						MLC-2-04B-17.2-**-HV
	18							MLC-2-04B-18-**-HV
	18							MLC-2-04B-18-**-HV
3	15						2	MLC-3-04B-15-**-HV
	16							MLC-3-04B-16-**-HV
	17,2							MLC-3-04B-17.2-**-HV
	18							MLC-3-04B-18-**-HV
	19							MLC-3-04B-19-**-HV
	20		142	36	72	37		MLC-3-04B-20-**-HV
	21,3	1/2	5.59	1.42	2.83	1.46		MLC-3-04B-21.3-**-HV
	22							MLC-3-04B-22-**-HV
	23							MLC-3-04B-23-**-HV
	25							MLC-3-04B-25-**-HV
25,4						MLC-3-04B-25.4-**-HV		

Additional outside diameters and various diameter combinations are available upon request. Please contact STAUFF for further information.

See pages 154 - 157, Catalogue 1 - STAUFF Clamps for material properties and technical information.

Alternative materials are available upon request. Please contact STAUFF for further information.



**Clamp Body Multi-Line Clamps**  
**Smooth Inside Surface with Tension Clearance**  
**Type MLC (for 6 lines)**



Group	Outside Diameter Pipe / Tube		Dimensions (mm/in)				Number of Bolts (C)	Ordering Code Standard Option (2 Clamp Halves) (** = Material)
	Ø D (mm)	(in)	L1	L2	L3	H		
1	6						3	MLC-1-06C-06-**-HV
	6,4							MLC-1-06C-06.4-**-HV
	8		116	20	40	27		MLC-1-06C-08-**-HV
	9,5	1/8	4.57	.79	1.57	1.06		MLC-1-06C-09.5-**-HV
	10							MLC-1-06C-10-**-HV
	12							MLC-1-06C-12-**-HV
2	10						3	MLC-2-06C-10-**-HV
	12							MLC-2-06C-12-**-HV
	12,7							MLC-2-06C-12.7-**-HV
	13,5	1/4	172	29	58	33		MLC-2-06C-13.5-**-HV
	14		6.77	1.14	2.28	1.30		MLC-2-06C-14-**-HV
	15							MLC-2-06C-15-**-HV
	16							MLC-2-06C-16-**-HV
	17,2	3/8						MLC-2-06C-17.2-**-HV
	18							MLC-2-06C-18-**-HV
3	15						3	MLC-3-06C-15-**-HV
	16							MLC-3-06C-16-**-HV
	17,2							MLC-3-06C-17.2-**-HV
	18							MLC-3-06C-18-**-HV
	19							MLC-3-06C-19-**-HV
	20		214	36	72	37		MLC-3-06C-20-**-HV
	21,3	1/2	8.43	1.42	2.83	1.46		MLC-3-06C-21.3-**-HV
	22							MLC-3-06C-22-**-HV
	23							MLC-3-06C-23-**-HV
	25							MLC-3-06C-25-**-HV
25,4						MLC-3-06C-25.4-**-HV		

Additional outside diameters and various diameter combinations are available upon request. Please contact STAUFF for further information.

### Ordering Codes

#### Clamp Body

**\*MLC-\*1-\*06C-\*06-\*PP-\*HV**

One clamp body is consisting of two clamp halves.

* Clamp Type	MLC
* STAUFF Group	1
* Number of lines and bolts	06C
* Exact outside diameter Ø D (mm)	06
* Material code (see below)	PP
* Inside Surface Type	
Smooth Inside Surface (Standard Option)	HV
Profiled Inside Surface (Upon Request)	without

#### Standard Materials

**Polypropylene**  
 Colour: Black  
 Material code: **PP**

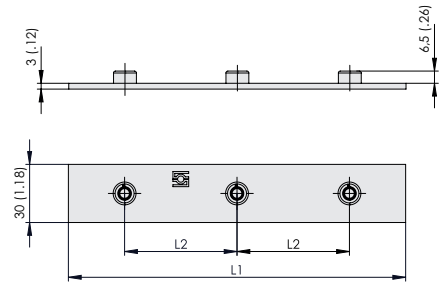
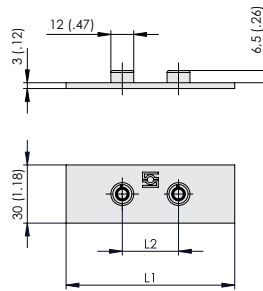
**Polyamide**  
 Colour: Black  
 Material code: **PA**

**Fire-Proof Clamp Body Material made of Polyamide**  
 Colour: Black  
 Material code: **PA-V0**

See pages 154 - 157, Catalogue 1 - STAUFF Clamps for material properties and technical information.

Alternative materials are available upon request. Please contact STAUFF for further information.

Single Weld Plate for Multi-Line Clamps Type SP-MLC



2 Welding Nuts (B)

3 Welding Nuts (C)

Ordering Codes

Single Weld Plate

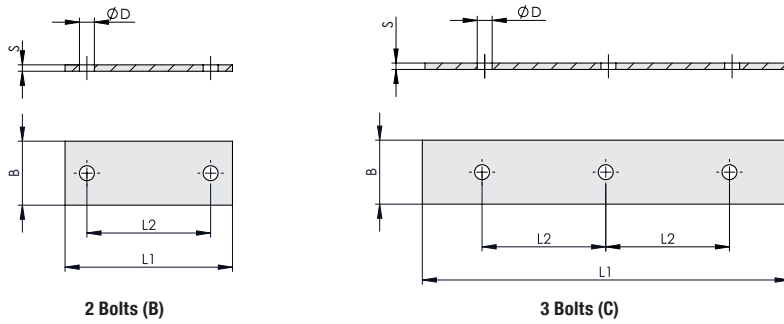
\*SP-MLC-\*1-\*04B-\*M-\*78-\*W2

- \* Single Weld Plate for Multi-Line Clamps **SP-MLC**
- \* STAUFF Group **1**
- \* Number of lines and bolts in Clamp Body **04B**
- \* Thread code Metric ISO thread **M**
- Unified coarse (UNC) thread **U**
- \* Length **78**
- \* Material code Carbon Steel, phosphated **W2**
- Stainless Steel V4A **W5**
- 1.4401 / 1.4571 (AISI 316 / 316 Ti)

Group STAUFF	Number of Lines in Clamp Body	Number of Welding Nuts	Dimensions (mm/in)		Ordering Codes (Standard Options)	
			Thread G	L1 L2		
1	2	2	M6	62.5 40	SP-MLC-1-02B-M-62.5-W2	
			1/4-20 UNC	2.46 1.57	SP-MLC-1-02B-U-62.5-W2	
	M6		58 20	SP-MLC-1-03B-M-58-W2		
	1/4-20 UNC		2.28 .79	SP-MLC-1-03B-U-58-W2		
	M6		78 40	SP-MLC-1-04B-M-78-W2		
	1/4-20 UNC		3.07 1.57	SP-MLC-1-04B-U-78-W2		
2	2	3	M6	118 40	SP-MLC-1-06C-M-118-W2	
			1/4-20 UNC	4.46 1.57	SP-MLC-1-06C-U-118-W2	
	M6		80 58	SP-MLC-2-02B-M-80-W2		
	1/4-20 UNC		3.15 2.28	SP-MLC-2-02B-U-80-W2		
	M6		87 29	SP-MLC-2-03B-M-87-W2		
	1/4-20 UNC		3.43 1.14	SP-MLC-2-03B-U-87-W2		
2	3	2	M6	116 58	SP-MLC-2-04B-M-116-W2	
			1/4-20 UNC	4.57 2.28	SP-MLC-2-04B-U-116-W2	
	M6		174 58	SP-MLC-2-06C-M-174-W2		
	1/4-20 UNC		6.85 2.28	SP-MLC-2-06C-U-174-W2		
	4		3	M6	94.5 72	SP-MLC-3-02B-M-94.5-W2
				1/4-20 UNC	3.72 2.83	SP-MLC-3-02B-U-94.5-W2
M6	108 36	SP-MLC-3-03B-M-108-W2				
1/4-20 UNC	4.25 1.41	SP-MLC-3-03B-U-108-W2				
M6	144 72	SP-MLC-3-04B-M-144-W2				
1/4-20 UNC	5.67 2.83	SP-MLC-3-04B-U-144-W2				
6	3	M6	216 72	SP-MLC-3-06C-M-216-W2		
		1/4-20 UNC	8.50 2.83	SP-MLC-3-06C-U-216-W2		

All threaded parts are available with Metric ISO thread or unified coarse (UNC) thread according to dimension table. Alternative materials and surface finishings are available upon request. Contact STAUFF for further information.



**Cover Plate for Multi-Line Clamps  
Type DP-MLC**


Group STAUFF	Number of Lines in Clamp Body	Number of Bolts	Dimensions (mm/in)					Ordering Codes (Standard Options)		
			L1	L2	B	D	S			
1	2	2	60,5	40				DP-MLC-1-02B-60.5-W3		
			2.38	1.57						
	3		56	20					DP-MLC-1-03B-56-W3	
			2.20	.79						
	4		76	40						DP-MLC-1-04B-76-W3
			2.99	1.57						
6	116	40	DP-MLC-1-06C-116-W3							
	4.57	1.57								
2	2	2		78,5	58	30	7	3	DP-MLC-2-02B-78.5-W3	
				3.09	2.28					
	3			85	29					DP-MLC-2-03B-85-W3
				3.35	1.14					
	4		114	58	DP-MLC-2-04B-114-W3					
			4.49	2.28						
6	172	58	DP-MLC-2-06C-172-W3							
	6.77	2.28								
3	2	2		92,5		72				DP-MLC-3-02B-92.5-W3
				3.64		2.83				
	3			106	36	DP-MLC-3-03B-106-W3				
				4.17	1.42					
	4		142	72	DP-MLC-3-04B-142-W3					
			5.59	2.83						
6	214	72	DP-MLC-3-06C-214-W3							
	8.43	2.83								

Alternative materials and surface finishings are available upon request. Contact STAUFF for further information.

**Ordering Codes**
**Cover Plate**

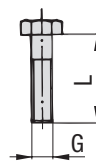
**\*DP-MLC-\*1-\*04B-\*76-\*W3**

* Cover Plate for Multi-Line Clamps	<b>DP-MLC</b>
* STAUFF Group	<b>1</b>
* Number of lines and bolts in Clamp Body	<b>04B</b>
* Length	<b>76</b>
* Material code	<b>W3</b>
Carbon Steel, zinc/nickel-plated	
Stainless Steel V4A	<b>W5</b>
1.4401 / 1.4571 (AISI 316 / 316 Ti)	

### Hexagon Head Bolt

(for Use with Cover Plate DP-MLC)

#### Type AS



Hexagon Head Bolt AS (according to DIN 931 / 933 or ANSI / ASME B18.2.1.)  
Dimensions applicable only when used with Cover Plate DP-MLC

#### Ordering Codes

##### Hexagon Head Bolt

\*AS-\*M6x30-\*W3

- \* Hexagon Head Bolt (according to DIN 931 / 933 or ANSI / ASME B18.2.1.) **AS**
- \* Thread type and size acc. to dimension table **M6x30**
- \* Material code Carbon Steel, zinc/nickel-plated **W3**  
Stainless Steel V4A **W5**  
1.4401 / 1.4571 (AISI 316 / 316 Ti)

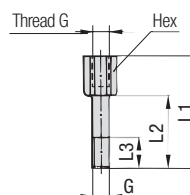
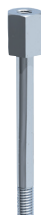
Group	Dimensions (mm/in)	Ordering Codes (Standard Options)
STAUFF	Thread G x L	
1	M6 x 30	AS-M6x30-W3
	1/4-20 UNC x 1-1/4	AS-1/4-20UNCx1-1/4-W3
2	M6 x 35	AS-M6x35-W3
	1/4-20 UNC x 1-3/8	AS-1/4-20UNCx1-3/8-W3
3	M6 x 40	AS-M6x40-W3
	1/4-20 UNC x 1-1/2	AS-1/4-20UNCx1-1/2-W3

All threaded parts are available with Metric ISO thread or unified coarse (UNC) thread according to dimension table. Alternative materials and surface finishings are available upon request. Contact STAUFF for further information.

### Stacking Bolt

(for Use with Safety Locking Plate SIG)

#### Type AF



#### Ordering Codes

##### Stacking Bolt

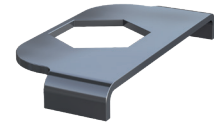
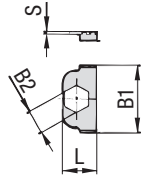
\*AF-\*1/1A/1D-\*M-\*W3

- \* Stacking Bolt (according to STAUFF Standard-Series) **AF**
- \* STAUFF Group **1**
- \* Thread code Metric ISO thread **M**  
Unified coarse (UNC) thread **U**
- \* Material code Carbon Steel, zinc/nickel-plated **W3**  
Stainless Steel V4A **W5**  
1.4401 / 1.4571 (AISI 316 / 316 Ti)

Group	Dimensions (mm/in)					Ordering Codes (Standard Options)
STAUFF	Thread G	L1	L2	L3 min.	Hex	
1	M6	34	20	12	11	AF-1/1A/1D-M-W3
	1/4-20 UNC	1.34	.79	.47	.43	AF-1/1A/1D-U-W3
2	M6	40	25	12	11	AF-2-M-W3
	1/4-20 UNC	1.57	.98	.47	.43	AF-2-U-W3
3	M6	44	30	12	11	AF-3-M-W3
	1/4-20 UNC	1.73	1.18	.47	.43	AF-3-U-W3

All threaded parts are available with Metric ISO thread or unified coarse (UNC) thread according to dimension table. Alternative materials and surface finishings are available upon request. Contact STAUFF for further information.

**Safety Locking Plate**  
 (for Use with Stacking Bolt AF)  
**Type SIG**



**STAUFF Group 1**

Group STAUFF	Dimensions (mm/in)				Ordering Code (Standard Option)
	L	B1	B2	S	
1					SIG-1-W3
2	16 .63	32 1.26	11,2 .44	1 .04	
3					

Alternative materials and surface finishings are available upon request. Contact STAUFF for further information.

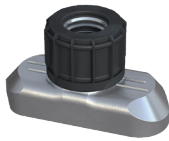
**Ordering Codes**

**Safety Locking Plate**

**\*SIG-\*1-\*W3**

* Safety Locking Plate (according to STAUFF Standard-Series)	<b>SIG</b>
* STAUFF Group	<b>1</b>
* Material code Carbon Steel, zinc/nickel-plated	<b>W3</b>
Stainless Steel V4A	<b>W5</b>
1.4401 / 1.4571 (AISI 316 / 316 Ti)	

**Hexagon Rail Nut**  
(for Use with Mounting Rail TS)  
Type SM



**Ordering Codes**

**Hexagon Rail Nut**

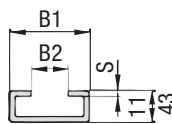
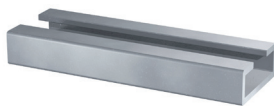
**\*SM-\*1-8/1D-\*M-\*W3**

- \* Hexagon Rail Nut (according to STAUFF Standard-Series) **SM**
- \* STAUFF Group 1 to 8 **1-8/1D**
- \* Thread code Metric ISO thread **M**  
Unified coarse (UNC) thread **U**
- \* Material code Carbon Steel, zinc/nickel-plated **W3**  
Stainless Steel V4A **W5**  
1.4401 / 1.4571 (AISI 316 / 316 Ti)

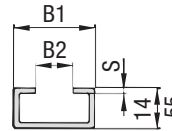
Group STAUFF	Dimensions (mm/in)						Ordering Codes (Standard Options)
	Thread G	L	B	H1	H2	ØD	
1							
2	M6 1/4-20 UNC	25,5 1.00	10,4 .41	14,2 .56	5,5 .22	12 .47	SM-1-8/1D-M-W3 SM-1-8/1D-U-W3
3							

All threaded parts are available with Metric ISO thread or unified coarse (UNC) thread according to dimension table. Alternative materials and surface finishings are available upon request. Contact STAUFF for further information.

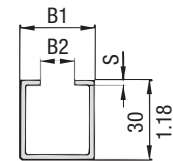
**Mounting Rail**  
(for Use with Hexagon Rail Nut SM)  
Type TS



Mounting Rail TS-11



Mounting Rail TS-14



Mounting Rail TS-30

**Ordering Codes**

**Mounting Rail**

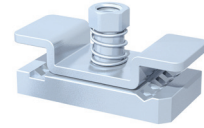
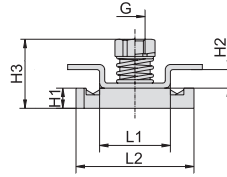
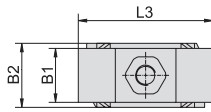
**\*TS-\*11-\*1M-\*W98**

- \* Mounting Rail (according to STAUFF Standard-Series) **TS**
- \* Height of rail 11 mm / .43 in **11**  
14 mm / .55 in **14**  
30 mm / 1.18 in **30**
- \* Length of rail 1 m / 3.28 ft **1M**  
2 m / 6.56 ft **2M**  
Alternative lengths available upon request. Contact STAUFF for further information.
- \* Werkstoff Carbon Steel, hot-dip galvanised **W98**  
Stainless Steel V4A **W5**  
1.4401 / 1.4571 (AISI 316 / 316 Ti)

Group STAUFF	Dimensions (mm/in)			Ordering Codes (Standard Options)	
	B1	B2	S	Length of rail: 1 m / 3.28 ft	Length of rail: 2 m / 6.56 ft
1				Height 11 mm / .43 in TS-11-1M-W98	Height 11 mm / .43 in TS-11-2M-W98
2	28 1.10	11 .43	2 .08	Height 14 mm / .55 in TS-14-1M-W98	Height 14 mm / .55 in TS-14-2M-W98
3				Height 30 mm / 1.18 in TS-30-1M-W98	Height 30 mm / 1.18 in TS-30-2M-W98

Alternative materials and surface finishings are available upon request. Contact STAUFF for further information.

## Channel Rail Adaptor (for Use with Various Channel Rails) Type CRA



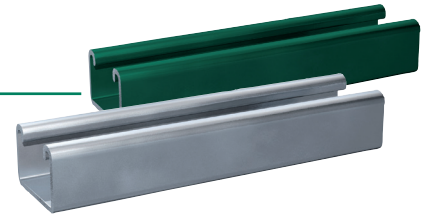
Group	STAUFF	DIN	Dimensions (mm/in)								Ordering Codes (Standard Options)	
			Thread G	L1	L2	L3	B1	B2	H1	H2		H3
1		0										
2		2	M6	21	35	40	16	19	6	5,5	20,5	CRA-1-8/1D-M-W3
			1/4-20 UNC	.83	1.38	1.57	.63	.75	.24	.22	.81	CRA-1-8/1D-U-W3
3		3										

All threaded parts are available with Metric ISO thread or unified coarse (UNC) thread according to dimension table. Alternative materials and surface finishings are available upon request. Contact STAUFF for further information.

### Ordering Codes

**Adaptor \*CRA-\*1-8/1D-\*M-\*W3**

* Channel Rail Adaptor	CRA
* STAUFF Group	1 to 8 <b>1-8/1D</b>
* Thread code	Metric ISO thread <b>M</b> Unified coarse (UNC) thread <b>U</b>
* Material code	Carbon Steel, zinc/nickel-plated <b>W3</b> Stainless Steel V4A <b>W5</b> 1.4401 / 1.4571 (AISI 316 / 316 Ti)

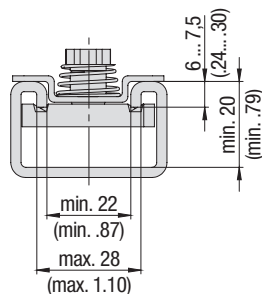


### Compatibility with Channel Rails

The STAUFF Channel Rail Adaptor, type CRA, is suitable for various channel rails, including the following types:

HALFEN	HILTI	UNISTRUT®	STAUFF (Cushion Clamp Series)
HM 41/41	MQ-21, MQ-41, MQ-52, MQ-72	P1000, P1000T, P1000V, P1000VT, P1001	SCS-048-1-PL, SCS-048-1-GR
HZA 41/22	MQ-21U, MQ-41U, MQ-72U	P2000, P2000T	SCS-120-1-PL, SCS-120-1-GR
HZM 41/41	MQ-21D, MQ-41D, MQ-52-72D	P3003, P3003T, P3300V, P3300VT, P3301	See page 149 for technical information.
HZM 41/22		P4000, P4000T	
HL 41/41, HL 41/B2		P5000, P5000T, P5001, P5500, P5500T, P5501	

To check the compatibility with additional types of channel rail, please compare the dimensions with the following drawing before use.



**Basic dimensional requirements for channel rails  
to be used with STAUFF Channel Rail Adaptors, type CRA**

## Examples of Assembly

### Direct Assembly



2x **Hexagon Head Bolt**  
Material code: W3 / W5  
Thread: Metric / UNC

1x **Cover Plate**  
Material code: W3 / W5

1x **Clamp Body** (2 Clamp Halves)  
STAUFF Group 1 / 2 / 3  
Material code: PP / PA / PA-V0  
Smooth Inside Surface  
with Tension Clearance

### Single Weld Plate Assembly



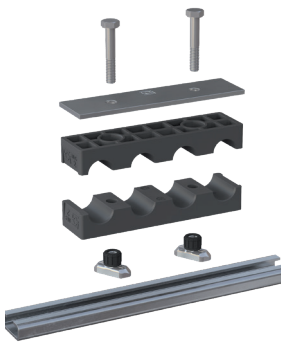
2x **Hexagon Head Bolt**  
Material code: W3 / W5  
Thread: Metric / UNC

1x **Cover Plate**  
Material code: W3 / W5

1x **Clamp Body** (2 Clamp Halves)  
STAUFF Group 1 / 2 / 3  
Material code: PP / PA / PA-V0  
Smooth Inside Surface  
with Tension Clearance

1x **Single Weld Plate**  
Material code: W2 / W5  
Thread: Metric / UNC

### Mounting Rail Assembly



2x **Hexagon Head Bolt**  
Material code: W3 / W5  
Thread: Metric / UNC

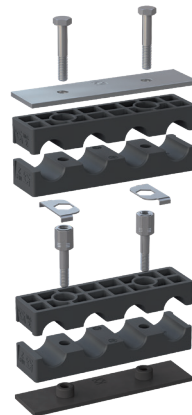
1x **Cover Plate**  
Material code: W3 / W5

1x **Clamp Body** (2 Clamp Halves)  
STAUFF Group 1 / 2 / 3  
Material code: PP / PA / PA-V0  
Smooth Inside Surface  
with Tension Clearance

2x **Hexagon Rail Nut**  
Material code: W3 / W5  
Thread: Metric / UNC

**Mounting Rail**  
Material code: W98 / W5  
Height: 11 mm (.43 in) /  
14 mm (.55 in) /  
30 mm (1.18 in)  
Length: 1 m (3.28 ft) /  
2 m (6.56 ft)

### Stacking Assembly



2x **Hexagon Head Bolt**  
Material code: W3 / W5  
Thread: Metric / UNC

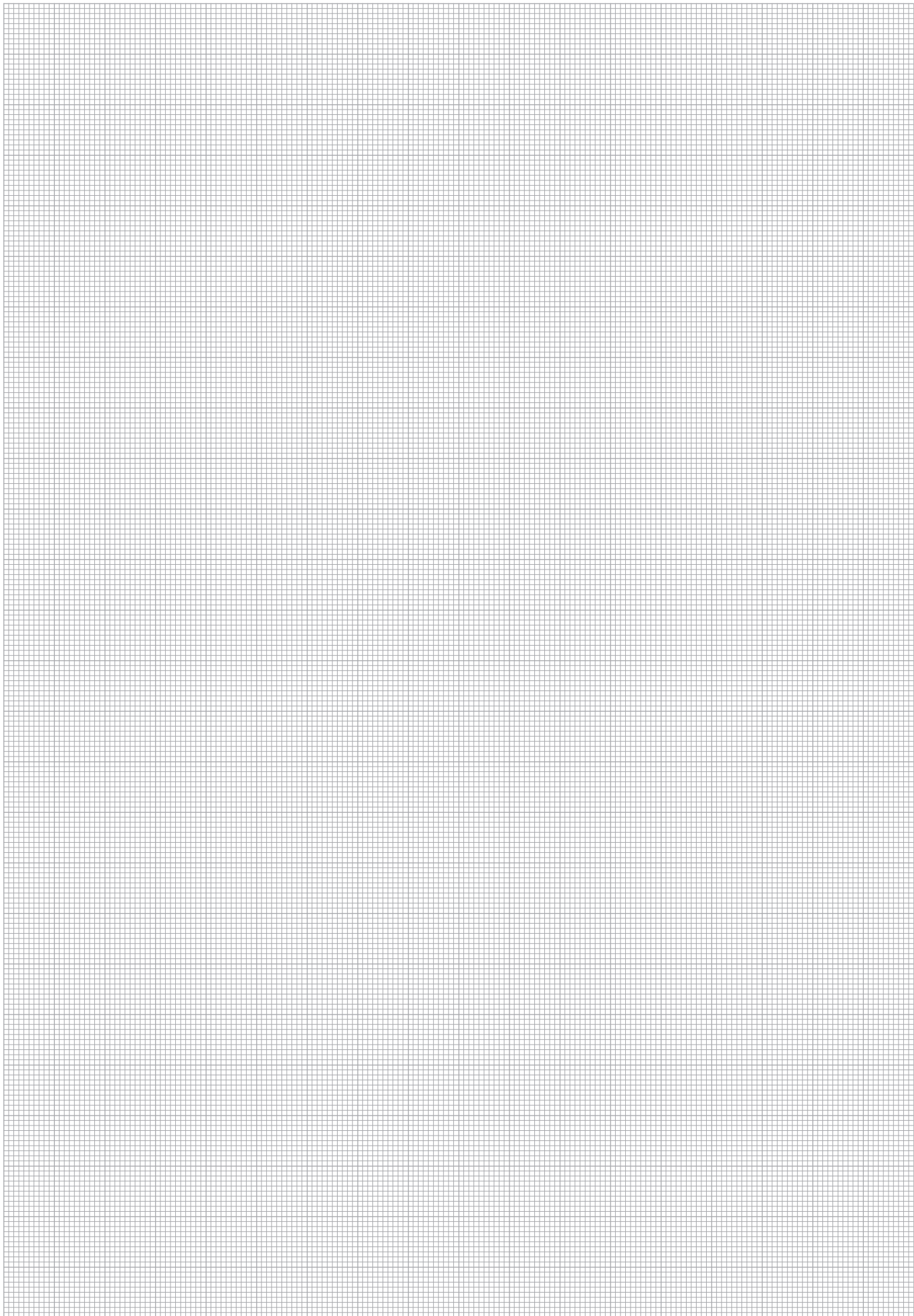
1x **Cover Plate**  
Material code: W3 / W5

2x **Clamp Body** (4 Clamp Halves)  
STAUFF Group 1 / 2 / 3  
Material code: PP / PA / PA-V0  
Smooth Inside Surface  
with Tension Clearance

2x **Safety Locking Plate**  
Material code: W3 / W5

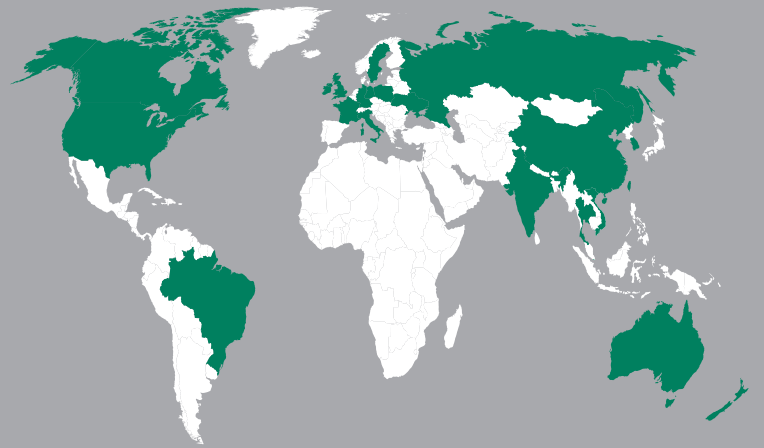
2x **Stacking Bolt**  
Material code: W3 / W5  
Thread: Metric / UNC

1x **Single Weld Plate**  
Material code: W2 / W5  
Thread: Metric / UNC



## STAUFF Multi-Line Clamps

Type MLC



### Germany

Walter Stauffenberg GmbH & Co. KG  
Im Ehrenfeld 4  
58791 Werdohl

STAUFF products and services are globally available through wholly-owned subsidiaries and a tight network of authorised distributors and representatives in all major industrial regions of the world.

Contact STAUFF:

[www.stauff.com/contact](http://www.stauff.com/contact)

The logo for BIBUS, featuring the word 'BIBUS' in a bold, blue, sans-serif font with a registered trademark symbol (®) to the right. Below the word is a blue horizontal line with the tagline 'SUPPORTING YOUR SUCCESS' in red, uppercase letters.

BIBUS SK, s.r.o  
Trnavská 31, SK-94 901 Nitra

Tel.: 037/ 7777 911    Email: [sale@bibus.sk](mailto:sale@bibus.sk)  
Fax.: 037/ 7777 999    <http://www.bibus.sk>