



FLOW MASTER II

CHARACTERISTICS

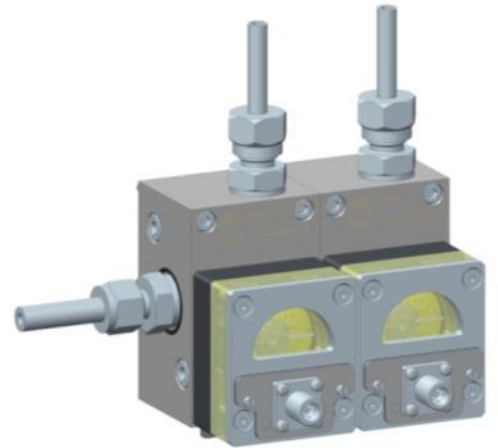
- **FLOW RATE REGULATION SYSTEM PATENTED TO INCREASE THE PRECISION OF BOTH THE HIGH AND LOW FLOW RATES**
- **WITH OPTICAL SENSOR**
- **THE FLOW OUTPUT IS NOT INTERRUPTED OR REDUCED EVEN IN THE EVENT OF SATELLITE LOCK**
- **ALUMINIUM BODY**
- **WITH BY-PASS THE SATELLITE CAN BE CHANGED WITHOUT SWITCHING OFF THE SYSTEM**

VOLUMETRIC FLOW METER AND REGULATOR

The **FLOW MASTER II** is a volumetric flow device that allows constant monitoring of the lubrication carried out.

Since the metering is volumetric, it is all independent from the temperature or viscosity, ensuring accurate monitoring without the need to carry out calibrations or compensations.

The liquid flow inside the metering module moves a "satellite" that describes fixed orbits. Each orbit is detected by an optical sensor that transmits the signal to a monitoring device. The operator can read the number of litres of oil dispensed per minute or the number of revolutions per minute directly on the FACT Controller display or on the monitor of a PLC.

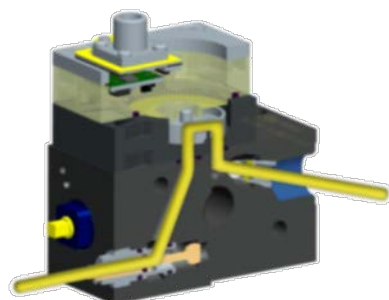


FLOWMASTER II is available both in the version with by-pass and without by-pass.

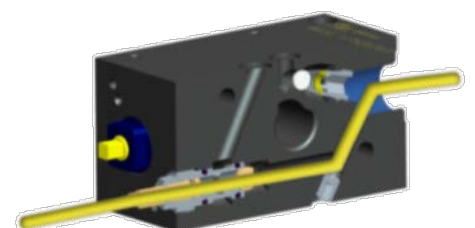
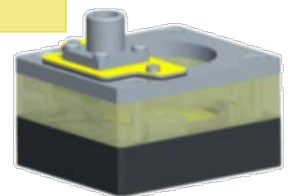
HOW THE BY-PASS SYSTEM ALLOWS A FLOWMASTER MODULE TO BE REPLACED WITHOUT INTERRUPTING THE SYSTEM

HOT-SWAP MODULES With BY-PASS ENABLED

The system allows the by-pass to be disabled in order to be able to replace the product module easily without needing to interrupt lubrication.



By-pass **DISABLED**



By-pass **ENABLED**

APPLICATIONS

- **PAPER MILLS**
- **RECIRCULATION SYSTEMS**



FLOW MASTER II

TECHNICAL INFORMATION

BASES AND METERING MODULES

Fluid maximum viscosity	1000 cSt (4628 SUS)
Operating temperature	0 °C ~ +60 °C (32 °F ~ +140 °F)
Minimum pressure	6 bar (88.2 p.s.i.)
Maximum pressure	20 bar (294 p.s.i.)
Base threads	- Inlet G" 1/2 UNI-ISO 228/1 - Outlet G" 3/8 UNI-ISO 228/1
Gaskets	O-ring in Viton
Bases and modules	Aluminium
Cover	Transparent polyamide/PET
Maximum distance between a flow meter and the Electronic Control Equipment	500 metres (547 yards) We recommend using shielded wire

OPTICAL SENSOR

Maximum output current	40 mA
Voltage	12-24Vdc
Maximum switching frequency	40 Hz
Outlets	NPN or PNP
Protection degree	IP 65
Temperature	0°C ~ +60 °C (32 °F ~ + 140 °F)

DIMENSIONS (NOT TO SCALE)

Technical drawings showing dimensions for the Flow Master II device. The front view shows a width of 43mm (1.69 in.) and a height of 57mm (2.24 in.). The top view shows a width of 49mm (1.96 in.) and a height of 7mm (0.28 in.). The side view shows a depth of 90mm (3.54 in.) and a width of 24mm (0.94 in.). The device is labeled with 'GAS 3/8" UNI ISO 228/1' and 'GAS 1/2" UNI ISO 228/1'. A table below the drawings provides the depth 'X' for different metering modules.

DEPTH "X"	MM	IN.
Metering module		
A (5 l/min max)	110	04:33
B (20 l/min max)	121	4.76

ORDER INFORMATION

VERSION (base – metering module – optical sensor)	MODULE	RANGE	CODES
WITHOUT BYPASS	5cc/REV	0.25 - 5 LPM	1525701
	20cc/REV	1 - 20 LMP	1525731
WITH BYPASS	5cc/REV	0.25 - 5 LPM	1525700
	20cc/REV	1 - 20 LMP	1525730

Distributor Info:

C2200PE WK 27/15

Dropsa products can be purchased at Dropsa branches and authorised distributors. Go to www.dropsa.com/contactor or write to sales@dropsa.com