



Amusement ride wheels



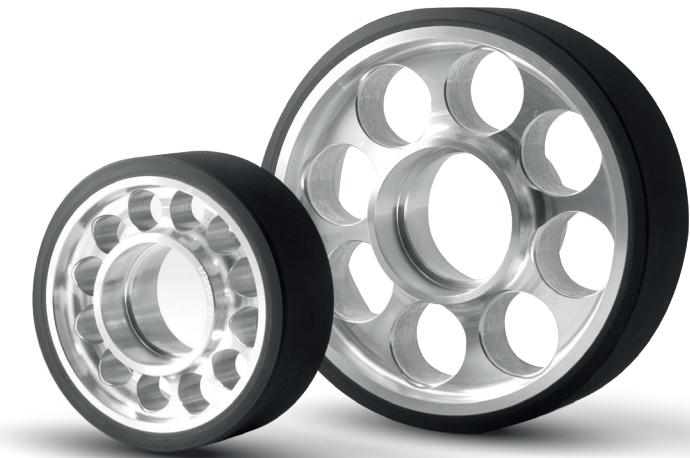
Printhane-X
for high speed
roller coaster wheels

- 50+ years experience in high load & high speed wheels
- in house design, engineering & manufacturing
- simulator facilities
- co-engineering with most important manufacturers
- new & reconditioned wheels
- global delivery



Reliable partner for amusement parks and ride manufacturers

The use of top quality materials such as Vulkollan® and Printhane-X withstanding high loads, high speeds, abrasion and deformation guarantees high safety, less standstill and less maintenance. Maximal fun thanks to a perfect combination of exceptional rebound, low rolling resistance, high load capacity, a constant hardness between 0°C and 100°C and minimal temperature build-up.



Printhane-X

Vulkoprin produces in the range of 80 to 95 Shore A. This large range of hardness is one of the reasons why Vulkollan® can be found in almost all technical applications, spanning the gap between rubbers and thermoplastics. Especially designed for the roller coaster industry Printhane-X has a proven track record as the contributor to a safe, comfortable and cost effective attraction.

	VK90	VK95	VK Stbx	PX95	PX97
Load bearing capacity	+	++	+	+++	+++
Rolling resistance	+	++	+	+++	+++
High temperatures	+	++	+	+++	+++
Low temperatures	+	+	+	+++	+++
Permanent set (flat spots)	++	++	++	+++	+++
Stress cracking	++	++	++	+++	+++
Wear	+++	+++	+++	+++	+++
High speed coaster	-	+	+/-	+++	+++
Family coaster	+	+++	++	++	++
Humidity	-/+	-/+	++	+++	+++
Cost	++	++	++	++	+

-

Low

+

Good

++

Very good

+++

Excellent

Best choices:

Family coasters:

Vulkollan 90 and 95, Printhane-X. If speeds and loads increase go more to the right of the column. Vulkollan with Stabaxol is a good choice when conditions are very damp or humid.

High speed coasters:

Vulkollan 95 performs very well on a lot of high speed coasters. If loads and speeds (temperature) are rising, flat spots or blowouts could become a problem. The obvious choices are then Printhane-X (PX). In extreme conditions our first choices are PX95 and PX97, where PX97 has the benefit of a higher load bearing capacity.

This matrix is a guide in making the right choice of type of cover. Vulkoprin has a lot of experience with these materials and our engineers can assist you to make the right choice. Do not hesitate to contact them!

Safety & Traceability

Quality assurance is our top priority. Standard incoming and outgoing inspection procedures along with individual wheel marking for traceability, guarantee the safety of the Vulkoprin amusement ride wheels. As a manufacturer, Vulkoprin can offer specialized technical advice and support. All products are REACH compliant.



Simulation facilities

Computer modelling and new state-of-the-art testing facility allows us to calculate load capacities, temperature build-up and wheel dimensions.

Pick up & rebonding service

The Vulkoprin full pick up and rebonding service offers the ability to rebond existing worn wheels in order to preserve and re-use the existing wheel hub. Rebonding of existing wheels includes removing the worn material, cleaning and inspecting the hub and applying a new polyurethane tread.

Consultancy

You want us to participate in the design of your future attraction or you are experiencing issues with your current wheels ? Contact Vulkoprin for specialised technical support and advice. As a manufacturer, we are perfectly placed to assist you.



Material
handling
industry

Theme park
industry



Machinery
industry



Maintenance
& Repair



BIBUS[®]
SUPPORTING YOUR SUCCESS

BIBUS SK, s.r.o
Trnavská 31, SK-94 901 Nitra

Tel.: 037/ 7777 911 Email: sale@bibus.sk
Fax.: 037/ 7777 999 http://www.bibus.sk

 **VULKOPRIN**
QUALITY IN MOTION

 **VULKOLLAN**[®]

Vulkoprin nv, Herderstraat 4, Tielt, 8700, be, T. + 32 (0)51 403 806, info@vulkoprin.be, www.vulkoprin.be

Stay informed:  <https://www.facebook.com/vulkoprin.be>

 <https://www.linkedin.com/company/vulkoprin-nv/>