



Maintenance, Repair & Operations



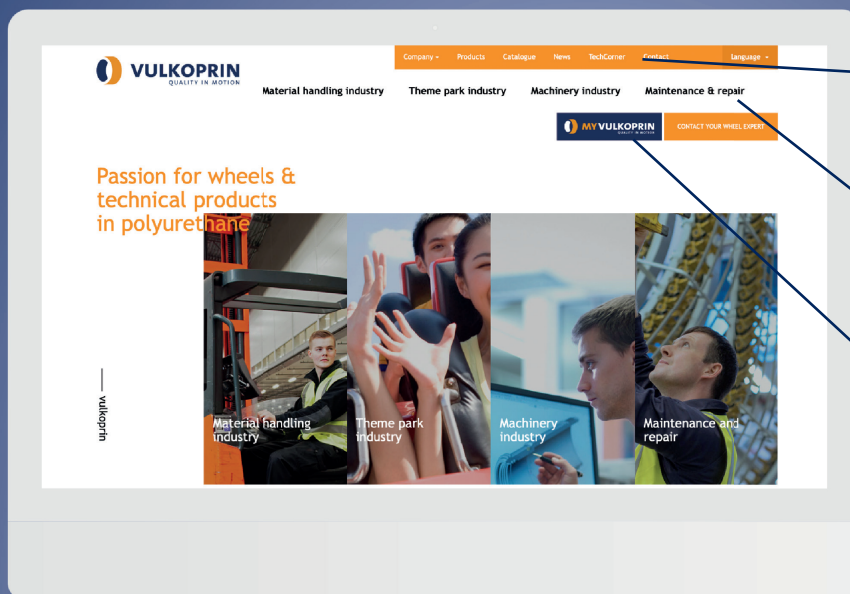
- family owned company, located in Tielt (Belgium)
- more than 55 years of experience
- in-house design, engineering & production
- global customer base in material handling-, machinery- and theme park industry



Index

4	Intro
6	Polyurethane industrial wheels
10	Drive wheels
14	Guiding rollers
16	Pallet roller and Press-on tyre
18	Nylon industrial wheels
22	Rubber industrial wheels
24	Stainless steel wheels
28	Wheels glass industry
30	Equipment wheels
34	Technical molded parts

<https://www.vulkoprin.be>



Techcorner

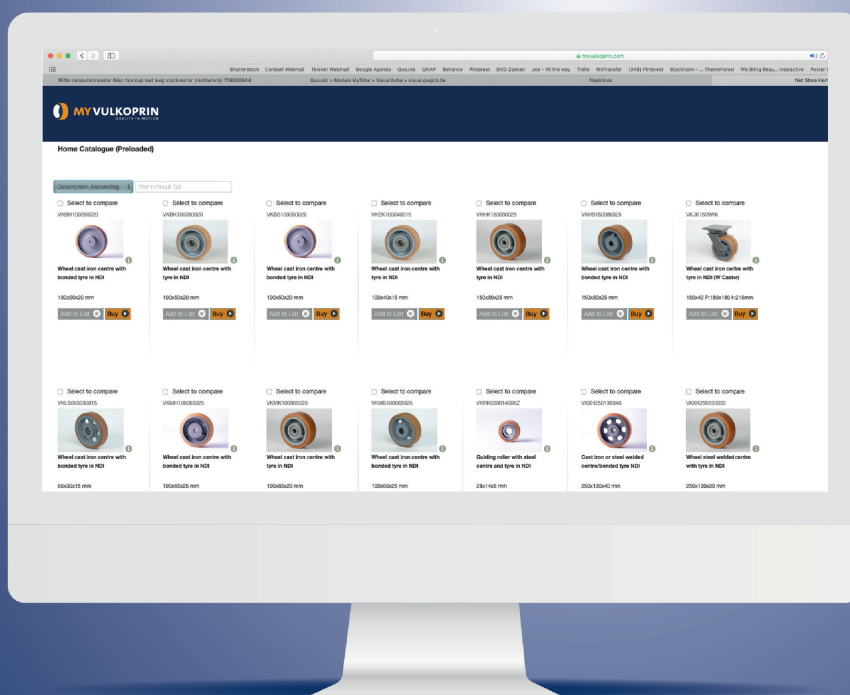
Technical support

Maintenance & Repair

Applications

MY VULKOPRIN

Digital catalogue



CLICK



+ 32 (0)51 403 806 | info@vulkoprin.be | www.vulkoprin.be

QUALITY LABELS



VULKOLLAN® is one of the most powerful elastomers in the market. The excellent mechanical properties ensure a maximum dynamic load capacity and a long service life, even in difficult and demanding conditions. The ultra-high-performance elastomer can only be manufactured by by Covestro licensed companies.



Printhane™ is the generic name of the **polyurethane elastomers** developed by Vulkoprin for specific applications.

- **Printhane-B™** is a polyurethane developed primarily for technical applications or in wheel applications that require more grip.
- **Printhane-C™** is conductive Vulkollan® and meets the standards EN12527 through EN12533. It finds application in environments with a higher risk of explosion, fire or electrostatic discharge (ESD).
- **Printhane-R™** is a rigid polyurethane for use in applications that require thick-walled plastic parts that shows a high impact-resistance and elasticity and who are non-deforming. This material is a great alternative to parts in milled engineering plastics (polyamide, POM, ...).
- **Printhane-X™** has been developed specially for applications with high speeds, which means it is well suited for all amusement park- & roller coaster applications.




Printhopan® is a thermoplastic polyurethane. The elasticity of the Printhopan® TPU ensures that the guiding roller is silent, very durable and resistant to oil and grease.



Easyroll™ is a super elastic rubber in 65 Shore A.

Download





VULKOPRIN
QUALITY IN MOTION

Material handling industry

Even voorstellen

Hoogwaardige materialen

"PRINTHANE": PU by Vulkoprin


Downloads

CAD Service

Press center

Machinery industry

Maintenance & Repair



CONTACTEER UW WIELEXPERT

Passie voor wielen & technische producten



Technical wheels



- 50+ years experience in high load & high speed applications
- standard and customised wheels, technical solutions for any machinery
- in-house design, engineering & manufacturing
- simulator facilities
- co-engineering with most important manufacturers
- global delivery

Co-engineering and subassembly





Material handling wheels



- 50+ years experience in high load & high speed wheels
- in-house design, engineering & manufacturing
- simulator facilities
- co-engineering with most important manufacturers
- new & reconditioned wheels
- global delivery

Polyurethanes featuring high load capacity and low rolling resistance






Amusement ride wheels



- 50+ years experience in high load & high speed wheels
- in-house design, engineering & manufacturing
- simulator facilities
- co-engineering with most important manufacturers
- new & reconditioned wheels
- global delivery


Printthane-X for high-speed roller coaster wheels





The Perfect solution







Best of Vulkoprin





55 years

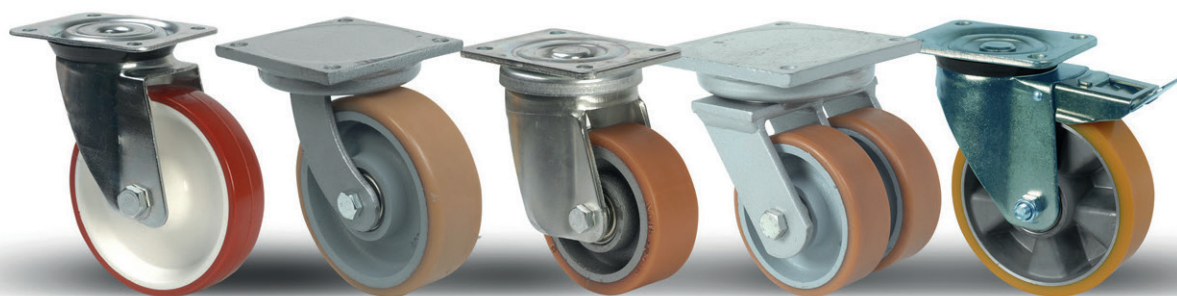


Maintenance, Repair & Operations



- familie geleide onderneming, gevestigd in Tielt (België)
- meer als 55 jaar ervaring
- in-house design, engineering & productie
- klanten wereldwijd in material handling, machinery-en pretpark industrie
- entreepunt familie, heeft 4 Tielt (België)
- plus de 25 ans d'expérience
- conception, ingénierie et production internes
- applications pour maintenance de machines, machines & équipement et parcs d'attractions





Polyurethane industrial wheels



PLUR



PMM



PMMS



PVM



PMC



PMCS



100-300 kg



80-200 mm

Wheel with tread in TPU mounted in a pressed steel castor with top plate or bolt hole fixation

WKGK



WKGK PMM



WKGK PMMS



WKGK PVM



WKGK PMC



WKGK PMCS



175-300 kg



100-200 mm

Wheel with elastic vulcanised PUR mounted in a pressed steel castor with top plate or bolt hole fixation

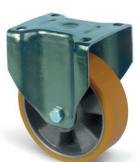
WKGK



WKGK YKN



WKGK YKNS



WKGK YVN



450-1000 kg



125-250 mm

Wheel with elastic casted PUR mounted in a pressed steel castor

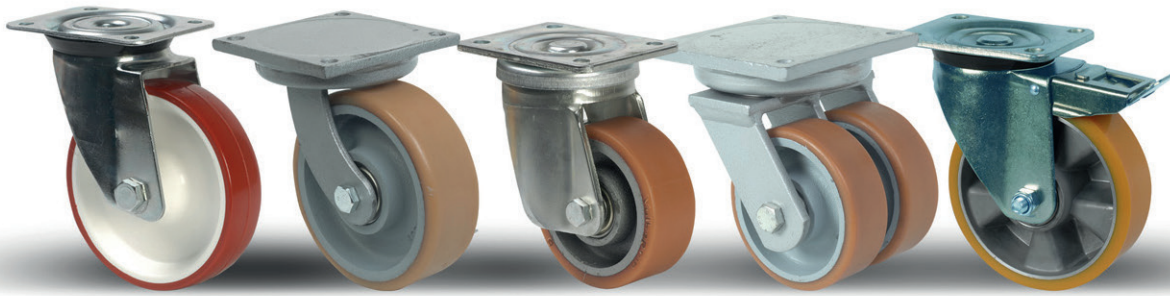
APPLICATIONS



DID YOU KNOW THAT

we offer heavy duty wheels with footguards





Polyurethane industrial wheels



VKEK VKBK



VKEK
NKS

VKEK
NKSS

VKEK
NVS



200-
500 kg



100-
300 mm

Wheel with elastic tyre made of Vulkollan® mounted in a solid pressed steel castor with top plate or bolt hole fixation

VKBK



VKBK
UKN

VKBK
UKNR

VKBK
UVN



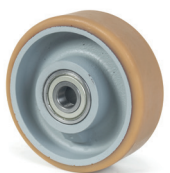
550-
1200 kg



125-
250 mm

Wheel with elastic tyre made of Vulkollan® mounted in a heavy duty pressed steel castor with top plate fixation

VKBK



VKBK
MMH

VKBK
MMHM

VKBK
MVH



400-
2700 kg



100-
400 mm

Wheel with elastic tyre made of Vulkollan® mounted in a heavy duty steel welded castor with top plate fixation

VK BK



**VK BK
WNI**

**VK BK
WNIM**

**VK BK
WVI**



700-
6400 kg



100-
400 mm

Double wheel with elastic tyre made of Vulkollan® mounted in a solid pressed steel twin castor with top plate fixation

VK LK



**VK LK
MMG**

**VK LK
MMGM**

**VK LK
MVG**



175-
1200 kg



65-
300 mm

Wheel with elastic tyre made of Vulkollan® mounted in a heavy duty steel welded castor with top plate fixation

VK HK



**VK HK
MMH**

**VK HK
MMHM**

**VK HK
MVH**



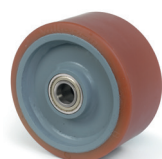
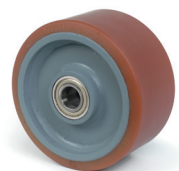
1000-
3000 kg



150-
500 mm

Wheel with elastic tyre made of Vulkollan® mounted in a heavy duty steel welded castor with top plate fixation and high load capacity

VK XK



VK XK



2700-
9200 kg



250-
600 mm

Wheel with elastic tyre made of Vulkollan® with a steel welded wheel center and by consequence a very high load capacity



Drive wheels



VKBH VKBS



VKBS



450-
1800 kg



50-
80 mm



100-
250 mm

Wheel with elastic tyre made of Vulkollan® with a cast iron wheel center with a plain H7-bore or with a keyway

VKLH VKLS



VKLS



175-
1200 kg



30-
50 mm



65-
300 mm

Wheel with elastic tyre made of Vulkollan® with a cast iron wheel center with a plain H7-bore or with a keyway

VKJH VKJS



VKJS



350-
1200 kg



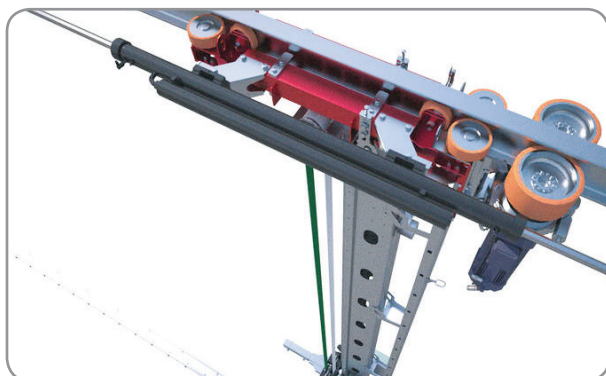
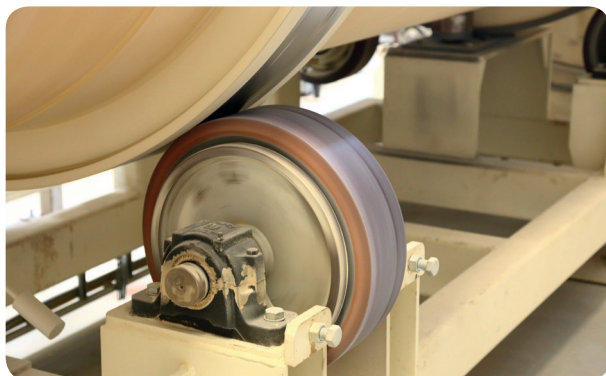
40-
50 mm



100-
300 mm

Wheel with elastic tyre made of Vulkollan® with a cast iron wheel center with a plain H7-bore or with a keyway

APPLICATIONS





Drive wheels



**VKMH
VKMS**



VKMS



575-
1900 kg



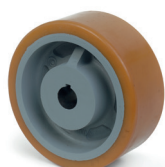
65 mm



100-
400 mm

Wheel with elastic tyre made of Vulkollan® with a cast iron wheel center with a plain H7-bore or with a keyway

**VKHH
VKHS**



VKHS



1000-
3000 kg



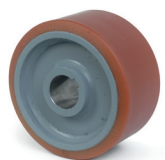
80 mm



150-
500 mm

Wheel with elastic tyre made of Vulkollan® with a cast iron wheel center with a plain H7-bore or with a keyway

**VKXH
VKXS**



VKXS



2700-
9200 kg



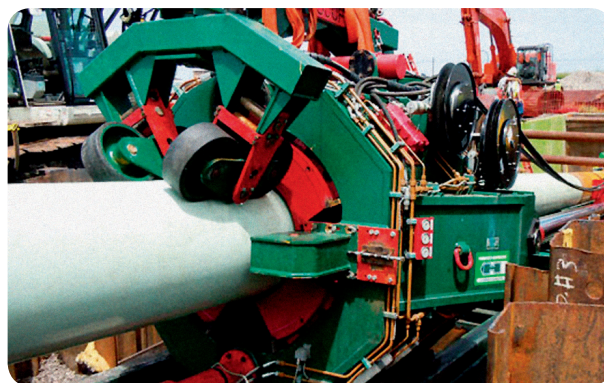
130-
200 mm



250-
600 mm

Wheel with elastic tyre made of Vulkollan® with a cast iron wheel center with a plain H7-bore or with a keyway

APPLICATIONS





Guiding rollers



WUDP



WUDP



10-
260 kg



6-
25 mm



18-
100 mm

Guiding roller with tread in Printhopan® injected polyurethane on precision ball bearing (ZZ or 2RS)

VKRK



VKRK



25-
260 kg



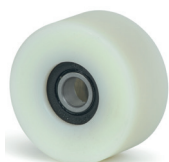
14-
25 mm



28-
125 mm

Guiding roller with tread made of Vulkollan® on precision ball bearing (ZZ or 2RS)

PGZK



PGZK



200 kg



30-
32 mm



60 mm

Guiding roller with tread made of Printhalon® (6PLA) on precision ball bearing (ZZ or 2RS)

APPLICATIONS





Pallet roller and Press-on tyre



PGSK



PGSK



900-
10000 kg



40-
110 mm



100-
400 mm

Pallet roller with tread made of Printhalon® (6PLA) on precision ball bearing (ZZ or 2RS).

VKTK VKTD



VKTK



150-
840 kg



40-
138 mm



50-
82 mm

Palletroller with tread made of Vulkollan® on precision ball bearing (ZZ or 2RS). Steel center, nylon or metal sealing.

PLTK PLTD



PLTK



650-
1100 kg



60-
110 mm



85 mm

Pallet roller with tread made of Printhalon® (PA6) on precision ball bearing (ZZ or 2RS). Light polyamid sealing.

APPLICATIONS

**VKFL
VKDL**



VKFL



325-
22200 kg



50-
406 mm



95-
960 mm

Cylindrical steel rim with tyre made of Vulkollan®. Flat (FL) or profiled (GL)



DID YOU KNOW THAT

we offer a refurbishment service





Nylon industrial wheels

PLVG PLVR



PLVG
PMM



PLVG
PMMS



PLVG
PVM



PLVG
PMC



PLVG
PMCS



175-
300 kg



80-
200 mm

Wheel in high quality polyamide PA6 on roller bearing mounted in a pressed steel castor with double ball race

PLVG PLVR



PLVG
NKS



PLVG
NKSS



PLVG
NVS



200-
450 kg



100-
250 mm

Wheel in high quality polyamide PA6 on roller bearing mounted in a pressed steel castor with double ball race

PLVK



PLVK
NKS



PLVK
NKSS



PLVK
NVS



200-
450 kg



100-
250 mm

Wheel in high quality polyamide PA6 on precision ball bearing mounted in a pressed steel castor with double ball race

APPLICATIONS





Nylon industrial wheels

PLLK



**PLLK
MMH**

**PLLK
MMHM**

**PLLK
MVH**



225-
750 kg



80-
200 mm

Wheel in high quality polyamide PA6 on precision ball bearing mounted in a heavy duty steel welded castor with double ball race

PLLK



**PLLK
WNI**

**PLLK
WNIM**

**PLLK
WVI**



800-
1500 kg



100-
200 mm

Double wheel in high quality polyamide PA6 on precision ball bearing mounted in a heavy duty steel welded twin castor with double ball race

PLSK



**PLSK
UKN**

**PLSK
UKNR**

**PLSK
UVN**



700-
1200 kg



125-
250 mm

Wheel in high quality polyamide PA6 on precision ball bearing mounted in a heavy duty pressed steel castor with double ball race

PLSK



**PLSK
MMH**

**PLSK
MMHM**

**PLSK
MVH**



**600-
1000 kg**



**100-
250 mm**

Wheel in high quality polyamide PA6 on precision ball bearing mounted in a heavy duty steel welded castor with double ball race

PLSK



**PLSK
WNI**

**PLSK
WNIM**

**PLSK
KWVI**



**1200-
2400 kg**



**150-
250 mm**

Double wheel in high quality polyamide PA6 on precision ball bearing mounted in a heavy duty steel welded twin castor with double ball race



easyroll



Rubber industrial wheels

RBSG RBSR



**RBSG
PMM**



**PLVG
PMMS**



**RBSG
PVM**



**RBSG
PMC**



**RBSG
PMCS**



50-
200 kg



80-
200 mm

Wheel with semi-elastic rubber tyre mounted in a pressed steel castor with double ball race

RGVR



**RGVR
FJM**



**RGVR
FJMS**



**RGVR
FVM**



**RGVR
FJC**



**RGVR
FJCS**



100-
350 kg



80-
200 mm

Wheel with elastic vulcanised tyre in rubber mounted in a pressed steel castor with double ball race

EGVR



**EGVR
NKS**



**EGVR
NKSS**



**EGVR
NVS**



150-
300 kg



100-
200 mm

Wheel with elastic vulcanised tyre in Easyroll[™] rubber mounted in a solid pressed steel castor with double ball race

ENAY ENAK



**ENAY
NKS**



**ENAY
NKSS**



**ENAY
NVS**



**150-
400 kg**



**100-
200 mm**

Wheel with elastic vulcanised tyre in Easyroll™ rubber mounted in a solid pressed steel castor with double ball race. Wheel pressed steel center. Cone ball bearings or precision ball bearings

ENGK



**ENGK
PMM**



**ENGK
PMMS**



**ENGK
PVM**



**ENGK
PMC**



**ENGK
PMCS**



**175-
300 kg**



**100-
200 mm**

Wheel with elastic vulcanised rubber tyre mounted in a pressed steel castor with double ball race. Aluminium centre

ENGK



**ENGK
YKN**



**ENGK
YKNS**



**ENGK
YVN**



**300-
500 kg**



**125-
250 mm**

Wheel with elastic vulcanised rubber tyre mounted in a heavy duty pressed steel castor with double ball race. Aluminium centre

ENFK



**ENFK
MMH**



**ENFK
MMHM**



**ENFK
MVH**



**450-
700 kg**



**150-
300 mm**

Wheel with elastic vulcanised tyre in Easyroll™ rubber mounted in a heavy duty steel welded castor with double ball race. Wheel pressed steel center. Precision ball bearings



Stainless steel wheels



RTWK



RTWK
IJU



RTWK
IJUS



RTWK
IVU



RTWK
IJC



RTWK
IJCS



40-
75 kg



50-
75 mm

Wheel with thermoplastic rubber tyre mounted in a pressed stainless steel castor with double ball race. Polypropylene centre.

RTFK



RTFK
IMM



RTFK
IMMS



RTFK
IVM



RTFK
IMC



RTFK
IMCS



90-
100 kg



80-
125 mm

Wheel with thermoplastic rubber tyre mounted in a pressed stainless steel castor with double ball race. Polypropylene centre.

RTFK



RTFK
IMCA



RTFK
IMCSA



RTFK
IMCK



RTFK
IMCSK



90-
100 kg



80-
125 mm

Wheel with thermoplastic rubber tyre mounted in a pressed stainless steel castor with double ball race. Polypropylene centre. Expander fitting for round tube.

APPLICATIONS





Stainless steel wheels



RGVS



RGVS
IMM



RGVS
IMMS



RGVS
IVM



RGVS
IMC



RGVS
IMCS



150-
350 kg



100-
200 mm

Wheel with elastic vulcanised tyre in rubber mounted in a pressed stainless steel castor with double ball race

PLWG



PLWG
IJU



PLWG
IJUS



PLWG
IVU



PLWG
IJC



PLWG
IJCS



40-
75 kg



50-
75 mm

Wheel in high quality polyamide Printhalon® PA6 mounted in a pressed stainless steel castor with double ball race

PLVG PLVS



PLVG
IMM



PLVG
IMMS



PLVG
IVM



PLVG
IMC



PLVG
IMCS



175-
350 kg



80-
125 mm

Wheel in high quality polyamide Printhalon® PA6 mounted in a pressed stainless steel castor with double ball race

PLVK



Wheel in high quality polyamide Printhalon® PA6 mounted in a pressed stainless steel castor with double ball race

PLSK



Wheel in high quality polyamide Printhalon® PA6 mounted in a heavy duty pressed stainless steel castor with double ball race on 2RS precision ball bearings

PLUS



Wheel in injected polyurethane TPU mounted in a pressed stainless steel castor with double ball race

HPGG



Heat resistant synthetic wheel in phenolic resin mounted in a pressed steel castor with double ball race



Wheels glass industry



**RBGL
RBGR**



RBGL



12-
20 kg



35-
50 mm

Ball castor in elastic natural rubber. For transport tables in the glass industry

**WKGL
WKGR**



WKGL



12-
20 kg



35-
50 mm

Ball castor in Printhopan® injected polyurethane. For transport tables in the glass industry

**RBIL
RBIR**



**RBIL
RBIR**



12-
20 kg



35-
50 mm

Stainless steel ball castor in natural rubber injected polyurethane. Used for transport tables in the glass industry

WKIL



WKIL



12-
20 kg



35-
50 mm

Stainless steel ball castor in Printhopan® injected polyurethane. For transport tables in the glass industry

RHGL



RHGL



12-
20 kg



35-
50 mm

Heat resistant ball castor in elastic rubber. For transport tables in the glass industry

RBCL



RBCL



30-
125 kg



75-
150 mm

Drive wheel for conveyor belts in elastic natural rubber

VKPG TVKHB



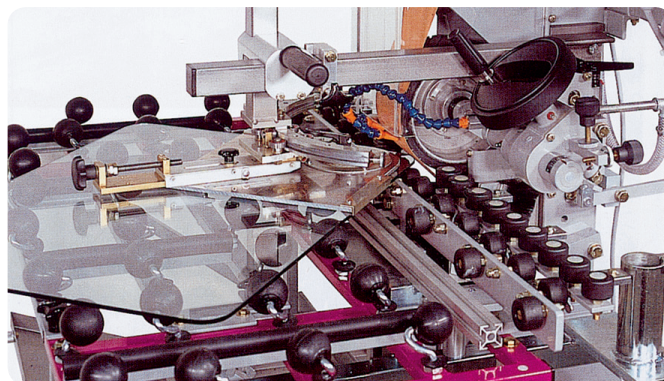
VKPG



26-
57 mm

Glass transport roller with tyre made of Vulkollan® with centre in cast polyamide

APPLICATIONS



Glass transport ring in NBR





Equipment wheels



RTSG



**RTSG
VJU**



**RTSG
VJUS**



**RTSG
VJB**



**RTSG
VJBS**



60-
100 kg



50-
75 mm

Wheel with tyre in thermoplastic rubber mounted in a pressed steel castor with double ball race. Polypropylene centre

RGGK



**RGGK
VJU**



**RGGK
VJUS**



**RGGK
VJB**



**RGGK
VJBS**



60-
100 kg



50-
75 mm

Wheel with tyre in elastic rubber mounted in a pressed steel castor with double ball race. Polyamide centre

RTFK



**RTFK
PMM**



**RTFK
PMMS**



**RTFK
PVM**



**RTFK
PMC**



**RTFK
PMCS**



90-
100 kg



80-
125 mm

Wheel with tyre in thermoplastic rubber mounted in a pressed steel castor with double ball race. Polypropylene centre

PLNG



Wheel in high quality polyamide Printhalon® PA6 mounted in a pressed steel castor with double ball race

PLNG



Wheel in high quality polyamide Printhalon® PA6 mounted in a pressed steel castor with double ball race

STW



Twin wheel in injected polypropylene on plain bearing

WLUG



Wheel with tread in injected polyurethane mounted in a pressed steel castor with double ball race. Polyamide centre



Equipment wheels

RTSG



RTSG
AJU



RTSG
AJUS



RTSG
AVU



RTSG
AJB



RTSG
AJBS



20-
75 kg



30-
75 mm

Wheel with thermoplastic rubber tyre mounted in a pressed steel castor with double ball race. Polypropylene centre

RGGG RGGK



RGGK
AJU



RGGK
AJUS



RGGK
AVG



RGGK
AJB



RGGK
AJBS



40-
60 kg



40-
75 mm

Wheel with elastic rubber tyre mounted in a pressed steel castor with double ball race. Polyamide centre

RGCK



RGCK
AJI



RGCK
AJUS



RGCK
AVI



RGCK
AJB



RGCK
AJBS



80-
100 kg



75-
125 mm

Wheel with elastic rubber tyre mounted in a pressed steel castor with double ball race. Polyamide centre

RTFK



**RTFK
PMCA**



**RTFK
PMCAS**



**RTFK
PMCK**



**RTFK
PMCSK**



**90-
100 kg**



**80-
125 mm**

Wheel with thermoplastic rubber tyre mounted in a pressed steel castor with double ball race.
Polypropylene centre. Expander fitting for round and square tube

THE PERFECT WHEEL CHOICE

Wheel & Castor

A wheel is made out of a tread tyre, rim and wheel bearing. It's that simple. A wheel becomes a castor by installing the wheel in a housing. Depending on the type of housing, the result is a swivel castor or a fixed castor. The swivel castors can be rotated thru' 360° by using a ball bearing-mounted swivel bearing, ensuring good manoeuvrability. The fixed castors, in contrast, cannot rotate and are fixed in place, and ensure good directional stability. In most cases, 2 swivel castors and 2 fixed castors are affixed.

Bearing

Plain bearing

Simple, largely maintenance-free bearing. Shock- and impact resistant. Suitable for use in damp environments. For low-speed devices (max. 4 km/h) and for short distances.

Ball bearing

Sturdy, hardwearing, largely maintenance-free bearings. Low bearing friction. Shock- and impact resistant. Permanent lubrication. The most frequently used bearings for low-speed devices (max. 4 km/h). Smoother rolling compared to plain bearings.

Precision ball bearing

For speeds of up to 20 km/h and heavier loads. Low rolling resistance when in use.

The choice of wheel and castor primarily depends on:

1. The loadbearing capacity required

The load capacities specified in our product range for wheels and castors apply for speeds of up to 4 km/h and an ambient temperature of 10°C to 60°C.

How much does a wheel/castor has to carry?

- The load of a castor can be calculated using the following rule of thumb:
- $\text{load} = (\text{inherent weight} + \text{max. load})/3$

- It is divided by 3 because on uneven flooring, even an item of equipment with 4 castors will only have 3 castors in contact with the floor, and these 3 then carry the full weight.
- This is a very general way to determine the loadbearing capacity. Ask your supplier for a detailed calculation.

2. The floor conditions

Is the floor rough or smooth? Is the floor covered in tiles, concrete, or is it heavy-duty industrial flooring?

In general, on smooth industry floors, you can use harder wheels (thin tread) while, on rough industry floors, soft wheels (thick tread) are better performing.

Choose non-marking castors if you wish to avoid leaving rubber tread marks. If there are ground sills, extra loadbearing capacity must be factored in.

Choose wheels with plain bearings and a stainless steel housing in food production areas or on wet surfaces.

3. The frequency of use

Is the equipment moved only on occasion, or all the time?

4. Environmental factors (temperature, including temperature fluctuations, chemicals, moisture and hygiene requirements)

Every site of use involves specific requirements. Moisture, cold, heat, temperature fluctuations, electrical conductivity and chemicals all affect the durability, rolling properties or the smoothness of motion.

5. Comfort

You can also choose the required level of comfort and smoothness.

The material of the wheels determines the rolling properties and ride comfort.

- Solid rubber rolls smoothly and silently. The strength and load capacity are limited however.
- Polyamide is shock- and impact resistant, chemically resistant and hardwearing. On the other hand it is a non-elastic material.
- Polyurethane is extremely wear resistant, noise absorbing and has excellent rolling properties thanks to its elasticity.

6. Specific dimensions such as wheel diameter, overall height and hub length, or plate sizes and assembly hole spacing for castors

TECHNICAL MOLDED PARTS



Elastic coupling in Vulkollan®. Large stock.

Semi finished products in Vulkollan® can be milled, turned, drilled and grinded.



Capping rings, cutting bars, cylinder linings and tension rollers in Vulkollan®.

Plate material Printhane-D™ 70-80-90 sh A. Large stock and fully customizable.





Cast pieces in Printhane-R™. The ideal solution for turned or milled parts in PA or other plastics.

Bumpers, positioning pieces, lifting arms etc. made of Vulkollan®.



Scrapers, mixing blades, guards, wear plates, separators, etc. in Printhane-B™ 85 sh A.

Rollers and slides for monorail transport systems sealing balls, rings for valves and valves cable wheels made of Vulkollan®.



DID YOU KNOW THAT

we offer customized wheel solutions, also in smaller numbers



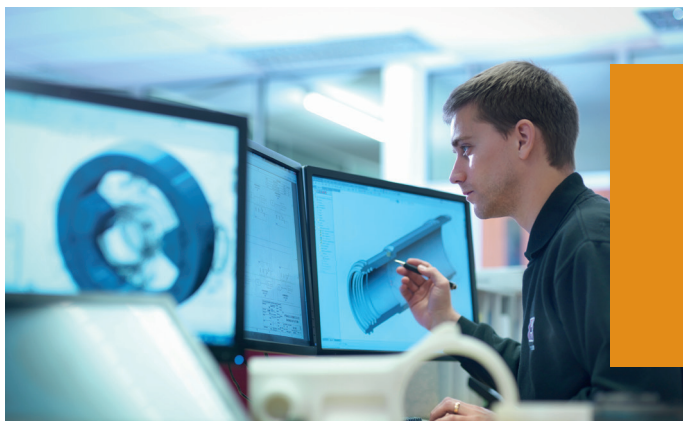


Material
handling
industry

Theme park
industry



Machinery
industry



Maintenance
and repair



BIBUS[®]
SUPPORTING YOUR SUCCESS

BIBUS SK, s.r.o
Trnavská 31, SK-94 901 Nitra

Tel.: 037/ 7777 911 Email: sale@bibus.sk
Fax.: 037/ 7777 999 http://www.bibus.sk

VULKOPRIN
QUALITY IN MOTION

VULKOLLAN[®]

Vulkoprin nv, Herderstraat 4, Tielt, 8700, be, T. + 32 (0)51 403 806, info@vulkoprin.be, www.vulkoprin.be

<https://www.facebook.com/vulkoprin.be>

<https://www.linkedin.com/company/vulkoprin-nv>