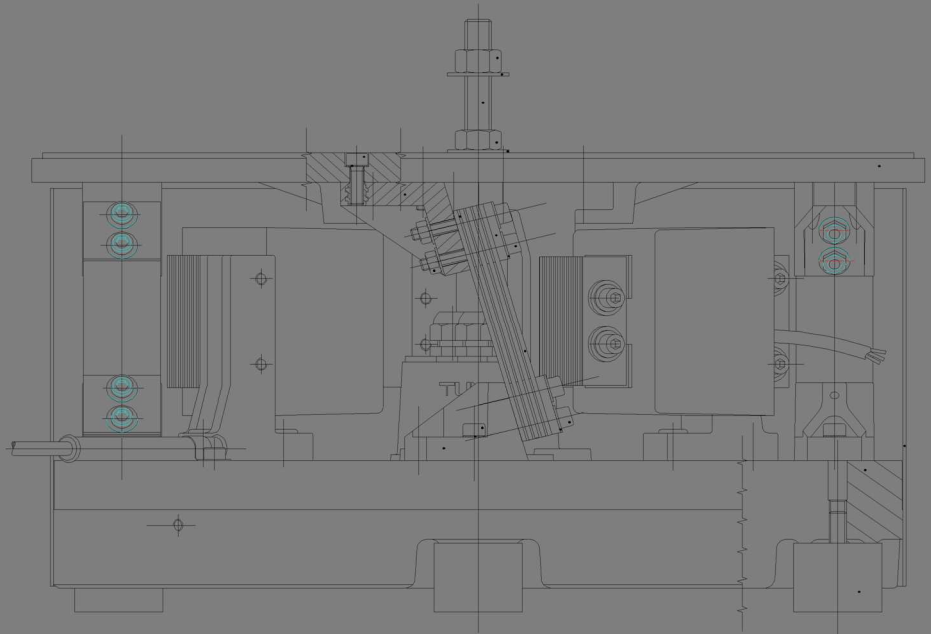
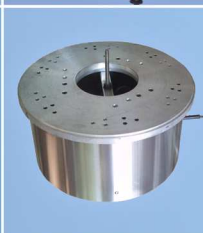
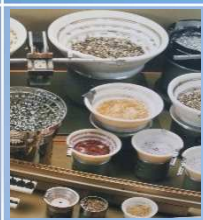


CATALOGUE

STANDARD EQUIPMENT for AUTOMATIC SYSTEM

- FEEDING
- SORTING
- ORIENTING
- HANDLING




TUMAC *Automation Technologies*
Via Della Liberazione 33/35
20098 S. Giuliano Milanese MI (ITALY)





00 CATALOGUE CONTENTS

This CATALOGUE represents our complete range of STANDARD EQUIPMENT. Special Requirements are available upon request. We also manufacture tooling to sort, orientate and feed components. The Bowls Customized and integrated with our Standard Equipment, provide an efficient system to integrate with Customer's line plant. TUMAC produces a full line of tooled bowls, vibrating feeders. From us you can find the best STANDARD devices present on the market with an excellent match of value-for-money. This Catalogue has been designed to provide technical details on many of our Standard products. Further Technical information can be found on TUMAC Website.



STANDARD EQUIPMENT

The largest proposal of Standard Equipment on the Market

Our Strong Point !!!!!

Buy our products today,
with the best Quality - Price ratio on the market

CONTENTS

Subject

COMPANY PROFILE

See page

00/00



INFO TUMAC PRODUCTS

00/00

VIBRATING BOWL FEEDERS

A 01/00



LINEAR VIBRATING FEEDERS / DRIVES

B 01/03



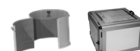
BOWLS

C01/07



SOUNDPROOFING HOODS

D 01/02



FEEDER STAND SUPPORTS

E 01/00



VIBRATING HOPPERS

F 01/03



MOTORIZED HOPPER ELEVATORS

G 01/02



BELT CONVEYORS

H 01/00



LIFT and ELEVATORS

I 01/02



MULTI STEP FEEDERS

I 01/02



SPECIAL MODULAR ELEVATORS

I 01/02



CONTROLLERS

L 01/00



CUSTOM APPLIANCES

M 01/03



SORTING ORIENTATING and FEEDING System

N 00/00

ENGINEERING

O 01/02



SERVICES – CUSTOMER CARE

O 01/02



Our Products



The BEST in FEEDING & SORTING System



PRODUCTS.....

Dear Customer,

After over Fifty years of uninterrupted activity, TUMAC is proud to be one of the leading companies in the sector of Industrial Automation systems and components, for the handling and manipulation of large batch production for the cosmetics, pharmaceutical, electronics, foodstuffs and metal industry sectors. The TUMAC products are reliability and dependable, designed for minimum low cost maintenance.

Quality, Innovation and efficient Customer Service are our strengths, protecting your investment in the long term.

Buy our products today with the best Quality - Price ratio on the market and if you can not find the product you are looking for in this presentation, contact our CUSTOMER SERVICE and we will identify the solution to your requirements!

We can Supply:

- **CIRCULAR Vibrating BASES**
- **LINEAR vibrating FEEDERS**
- **BOWL FEEDER – EQUIPMENT**
- **STEP ELEVATORS**
- **CONVEYOR-LIFT – ELEVATORS**
- **HOPPERS MOTORIZED**
- **Vibrating HOPPERS**
- **FEEDING-SORTING-ORIENTATING System**
- **ACCESSORIES**
- **ENGINEERING**
- **SERVICES**

Main SECTORS.....

Automotive
Metal Industry
Electromechanical
Packaging - FMCG Beauty Home
Food & Beverage
Pharmaceutical
Cosmetic

Circular Vibratory FEEDERS (Drive Unit)

The innovative Design and the New Technology of Electromagnet/Spring device, make the Drive Unit CHTB one of the most advanced Drive Unit Technologies currently available on the market. The TUMAC Drive Unit offer reliability and high performance in the time and low noise level. Sturdy construction, designed for heavy duty and continuous operation, with zero maintenance. The use of high performance magnets give a continuous high feed rate regardless of the number of pieces into the bowl.

Wide type & range of the circular BOWLS

Cylindrical Bowl
Stepped Bowl
Conical Bowl
Polyamide - Aluminum Bowl

Linear Vibratory FEEDERS

TUMAC's Vibratory Linear Unit are used to horizontal conveying of components, they can be used also to handle irregular supplies of parts from upstream equipment, creating a buffer store and smooth flow for further processes. Another use of linear feeders is to provide the drive unit for hoppers to store and feed bulk components.

TUMAC linear feeders are renowned for their high feed performance, long tracks and reliability in demanding conditions.

Vibrating HOPPERS

Motorized HOPPERS

CONVEYOR - Handling belt

Solutions to feed and have maximum loading autonomy in a wide range of configurations and sizes

Multi STEP ELEVATORS

LIFT & ELEVATORS - Orienting and Elevating Feeders

Machines designed to manage and lift the pieces to the desired height, creating large loading autonomies. With the possibility of sorting and orienting the pieces by of dedicated devices.

Control BOX

TUMAC's Control Box, are specially designed to meet the requirements of the bowl feeder industry and are CE approved . They using microprocessor technology to control external sensors and provide communication signals I/O PLC. Electrical modules including an electronic board for managing the electromagnetic base of vibratory part orientation units, control cabinets including plc and inverter to handle rotary and gravitational sorters, integration of quality control devices and relevant management and user interface.

FEEDING-SORTING-ORIENTATING System

TUMAC with over 50 years of uninterrupted activity, has experience and know-how to propose solution in order to meet market demands and customer needs with targeted solutions.

ACCESSORIES

Support, Frame & Adjustable Column
Sound Proof Cabins
Special Coating
Jog Spacers
Shooting Systems
Vision System

ENGINEERING

All products can be customised to meet customer needs.

With its highly professional sales personnel and skilled Engineering Department, TUMAC is the ideal partner

SERVICES

Standard equipment immediate delivery from stock.

Technical support is run directly by TUMAC.

The Customer Services department guarantees a solution to your problem in 8h - 24h throughout Italy and in 48h in EC countries.



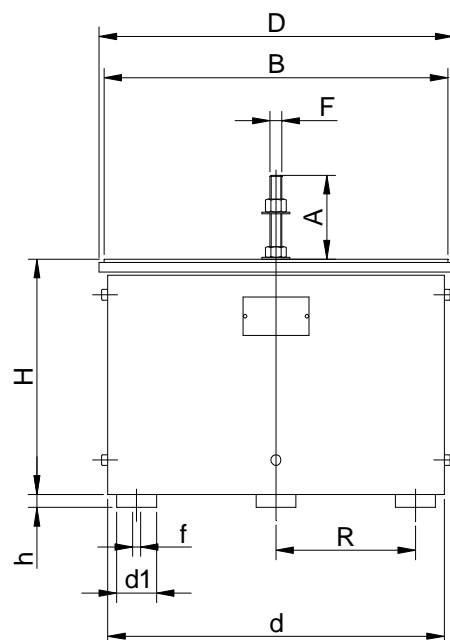
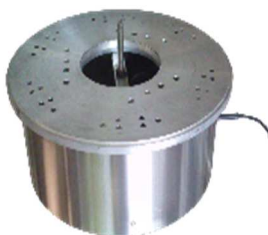
TUMAC Srl Via della Liberazione 33/35 20098 S. Giuliano Milanese (Milano) Italy
Tel. +39 02 98281013 Fax +39 02 98281035
Internet: www.tumac.it E-mail: tumac@tumac.it

VIBRATORY BOWL FEEDERS



A01 CIRCULAR DRIVE UNITS

The innovative Design and the new technology of the Electromagnet/spring devices, make the DRIVE UNIT series CHTB one of the most advanced one among technologies currently available on the market. TUMAC's drive units offer reliability and high performance in the time, and are less noisy. Sturdy in construction, designed for heavy duty and continuous operations, with zero maintenance. The use of high performance magnets gives a continuous high feed rate regardless of the number of pieces in the bowl. The TUMAC Equipment are designed and manufactured according to the end-users requirements, in order to guarantee performance, reliability, user-friendly operations with an excellent match of value-for-money. For any information, please do not hesitate to contact us.



Basic Criteria application area vibration frequency 3000 c/min

- For heavy additional mass at the bowl
- For minor noise emission
- For more loading pieces into the bowl

Basic Criteria application area vibration frequency 6000 c/min

- For a "fine" orientating - management of the pieces in output

TECHNICAL DATA

Protection Class	IP54/IP65
Connection Cable length	1.800mm, with socket Male 3+1 pin 10A EN61984
Cycles/min (Output vibrating frequency)	6000 3000
Power supply STD	230V AC 50Hz mono
Upon request, We can supply with different voltages and frequencies	
Rules according	ESM machinery directive 2006/42/CE
NOTE: * To be defined the feed output direction "Clockwise – Counterclockwise"	

Data Sheet DRIVE UNITS

Value at 230V AC 50Hz

Type	Hz	D	d	H	h	H+h	R	d1	A	B	f	Foot	F	Weight	Magnets	Action	A
	Frequency	mm	mm	mm	mm	mm	mm	mm	mm	mm	mm	n#	mm	kg	n#	Direction	Max
CHTB 10		98	100	51	8	59	35	15	17	97	M4	4	M5	1,5	1	Vertical	0,08
CHTB 15	6.000	151	147	138	9	147	55	25	36	145	M6	4	M8	9	1	Vertical	0,27
CHTB 20		205	197	175	9	184	74	25	50	198	M6	4	M10	18	1	Vertical	0,77
CHTB 25	3.000	255	232	194	10	204	93	30	56	245	M8	3	M10	26	1	Vertical	0,87
	6.000															Vertical	0,71
CHTB 30	3.000	305	273	194	10	204	113	30	56	295	M8	3	M10	36	1	Vertical	1,22
	6.000															Vertical	1,15
CHTB 35	3.000	355	338	219	12	231	140	40	78	345	M8	4	M12	55	2	Horizontal	1,89
	6.000															Horizontal	1,45
CHTB 40	3.000	405	388	222	12	234	163	40	68	395	M8	4	M12	70	2	Horizontal	1,74
	6.000															Horizontal	1,62
CHTB 50	3.000	507	463	224	25	249	175	40	80	495	M8	4	M12	105	3	Horizontal	2,68
	6.000															Horizontal	2,43
CHTB 601		507	499	266	18	284	220	40	100	495	M8	4	M12	130	2	Vertical	1,81
CHTB 61	3.000	611	599	292	45	337	182	70	162	605	M10	4	M20	230	3	Horizontal	2,48
TB 10		750	704	300	45	345	282	70	198	746	M10	8	M20	350	6	Horizontal	4,93



CHTB New series, can be equipped with a wide range of shape bowls see our Technical Proposal



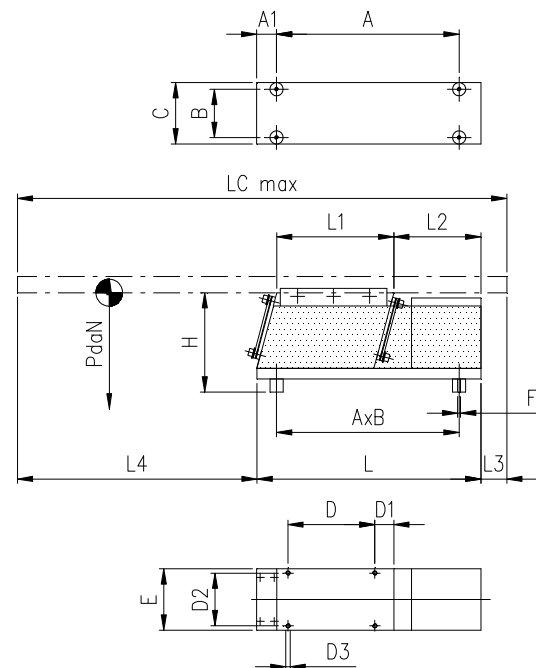
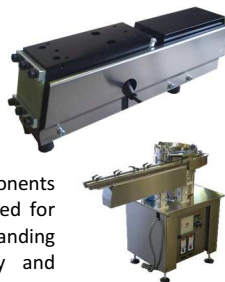
VIBRATORY LINEAR FEEDERS



B01 LINEAR DRIVE FEEDERS

TUMAC's Vibratory Linear Unit are used to horizontal conveying of components, they can be used also to handle irregular supplies of parts from upstream equipment, creating a buffer store and smooth flow for further processes. Another use of linear feeders is to provide the drive unit for hoppers to store and feed bulk components.

The advantage of vibratory hoppers when compared to other methods is the smooth, gentle and trouble free flow of components with high feeding weights. TUMAC linear feeders are renowned for their high feed performance, long tracks and reliability in demanding conditions. Sturdy construction, designed for heavy duty and continuous operation, with zero maintenance.



Basic Criteria application

Linear feeders are particularly suitable for the correct transport of small parts of any kind, have a low noise level and require a reduced number of human controls.

TECHNICAL DATA

Protection Class IP54/IP65
Connection Cable length 1.800mm, with socket Male 3+1 pin10A EN 61984

Cycles/min (Output vibrating frequency) 3000 50Hz
Power supply STD 230V AC 50Hz mono

Upon request, We can supply with different voltages and frequencies

Rules according ESM machinery directive 2006/42/CE

Note :

TUMAC must know the load rating (PdaN) to ensure a range of adjustment within the range of track weights to be used by the Customer. The values are indicative for a first sizing of the linear Feeders

Dimensions not shown, pls to contact our Engineering Dept.

Data Sheet DRIVE UNITS CHTR/S

Feature	Type	CHTR 50/S	CHTR 75/S	CHTR 85/S	CHTR 100/S
LC (*)	mm	500	700	1.000	1.300
L4	mm	270 - 280	405 - 425	445 - 545	745 - 845
L3 (*)	mm	10 - 20	10 - 30	50 - 150	50 - 150
L	mm	210	265	405	405
L1	mm	95	135	185	185
L2	mm	87	108	193	189
H	mm	85	113	145	165
AxB	mm	170x35	210,5x55	277x54	327x68
F	mm	M4	M4	M6	M6
A1	mm	20	22,50	13	13
C	mm	50	70	80	100
Max. Load linear Track (includind Components) P	daN	(*10)	(*10)	(*25)	(*30)
Weight	Kg	4,50	10,00	24,00	33,00
Hz	Frequency	3kHz	3kHz	3kHz	3kHz
Magnets	n#	1	1	1	1
Action	Direction	Horizontal	Horizontal	Horizontal	Horizontal
Value at 230V AC 50Hz					
CURRENT	A	0,10	0,20	1,00	1,50

(*) P , LC and L3 The values indicated are to be considered indicative, they may vary in function of the weight, the degree of flexibility, the geometry of the Rail Track and the characteristics of the piece to be processed



CHTR New series, can be equipped with a wide range of TRACK RAIL see our Technical Proposal





B02 LINEAR DRIVE UNITS

TUMAC's Vibratory Linear Unit are used to horizontal conveying of components, they can be used also to handle irregular supplies of parts from upstream equipment, creating a buffer store and smooth flow for further processes. Another use of linear feeders is to provide the drive unit for hoppers to store and feed bulk components.

The advantage of vibratory hoppers when compared to other methods is the smooth, gentle and trouble free flow of components with high feeding weights. TUMAC linear feeders are renowned for their high feed performance, long tracks and reliability in demanding conditions. Sturdy construction, designed for heavy duty and continuous operation, with zero maintenance.



Basic Criteria application

Vibratory linear Units type CHTR, ideal for Vibratory conveyors, suitable to handle a variety of products, from the finest powders, or the smallest pieces. Our linear drive units and feeders are the best solution to your required feeding rates.

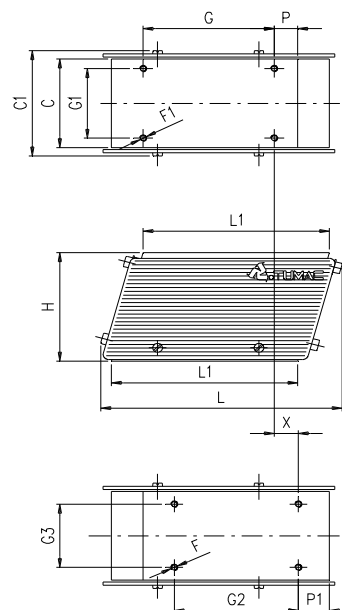
TECHNICAL DATA

Protection Class IP54/IP65
 Connection Cable length 1.800mm, with socket Male 3+1 pin10A EN 61984
 Cycles/min (Output vibrating frequency) 3000 50Hz
 Power supply STD 230V AC 50Hz mono
 Upon request, We can supply with different voltages and frequencies
 Rules according ESM machinery directive 2006/42/CE

Note :

TUMAC must know the load rating (PdaN) to ensure a range of adjustment within the range of track weights to be used by the Customer.

Dimensions not shown, pls to contact our Engineering Dept.



Data Sheet	DRIVE UNITS	CHTR					
Feature	Type	CHTR 30	CHTR 40	CHTR 50	CHTR 70	CHTR 85	
C	mm	30	40	50	70	80	
C1	mm	0	53	65	85	80	
H	mm	42	54	73	85	105	
L	mm	98	96	128	175	240	
L1	mm	75	76	98	135	184	
G	mm	48	50	60	95	140	
G1	mm	0	30	35	55	60	
G2	mm	50	50	60	90	125	
G3	mm	23	30	35	50	60	
P	mm	6	11	18	17	18	
P1	mm	18	14,50	20	22,50	23,50	
F	mm	M3	M4	M4	M5	M6	
F1	mm	M4 N#2 HOLE	M4	M4	M5	M6	
X	mm	0	8,50	13	17,50	18,50	
Max. Load (including Components)	P daN	(*3)	(*3.50)	(*5)	(*5)	(*13)	
Weight	Kg	0,80	0,95	1,65	2,25	7,70	
Hz	Frequency	3kHz	3kHz	3kHz	3kHz	3kHz	
Magnets	n#	1	1	1	1	1	
Action	Direction	Vertical	Vertical	Vertical	Vertical	Horizontal	
Value at 230V AC 50Hz	CURRENT A	0,05	0,10	0,15	0,15	1,00	

NOTE (*) The values indicated are to be considered indicative, they can be varied in function of the characteristics of the piece to be processed



CHTR New series, can be equipped with a wide range of TRACK RAIL see our Technical Proposal

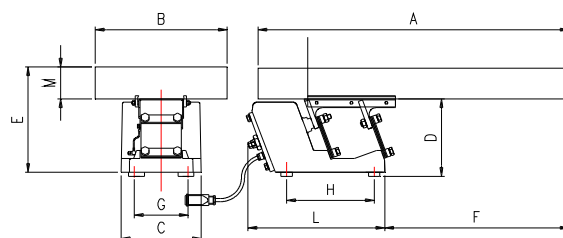




B03 LINEAR DRIVE UNITS

TUMAC's Vibratory Linear Unit type LE are used to horizontal conveying of components, they can be used also to handle irregular supplies of parts from upstream equipment, creating a buffer store and smooth flow for further processes. Another use of linear feeders is to provide the drive unit for hoppers to store and feed bulk components.

The advantage of vibratory hoppers when compared to other methods is the smooth, gentle and trouble free flow of components with high feeding weights. TUMAC linear feeders are renowned for their high feed performance, long tracks and reliability in demanding conditions. Sturdy construction, designed for heavy duty and continuous operation, with zero maintenance, with an excellent match of value-for-money. For any information, please do not hesitate to contact us



Basic Criteria application

Vibratory linear Units type LE, have a high performance, they are ideal for Vibratory conveyors and long hoppers, suitable to handle a variety of products, from the finest powders, or the smallest pieces.

TECHNICAL DATA

Protection Class IP54/IP65
 Connection Cable length 1.800mm, with socket Male 3+1 pin10A EN 61984
 Cycles/min (Output vibrating frequency) 3000 50Hz
 Power supply STD 230V AC 50Hz mono
 Upon request, We can supply with different voltages and frequencies
 Rules according ESM machinery directive 2006/42/CE

Note :

TUMAC must know the load rating (PdN) to ensure a range of adjustment within the range of track weights to be used by the Customer.

Dimensions not shown, pls to contact our Engineering Dept.

Data Sheet	DRIVE UNITS	LE			
Feature	Type	LE1	LE2	LE3	LE4
A	mm	300	500	700	800
B	mm	80	130	150	200
C	mm	78	128	148	178
D	mm	116	150	174	185
E	mm	136	201	245	255
F	mm	117	310	460	550
G	mm	50	75-80	90	100-120
H	mm	160	142	193	195
L	mm	230	230	293	305
M	mm	40	60	80	80
Mass Flow rate (ps.1.6kg/dm3)	Kg/min	10	30	80	116
	mm	N#4 HOLE	N#4 HOLE	N#4 HOLE	N#4 HOLE
Max.Load (includind Components)	P daN	(*1.50)	(*3.50)	(*7.50)	(*10)
Weight LE	Kg	4.60	13	19	26
	Hz	Frequency	3kHz	3kHz	3kHz
Magnets	n#	1	1	1	1
Azione	Direction	Horizontal	Horizontal	Horizontal	Horizontal
Value at 230V AC 50Hz					
Current	A	0,1	0,25	0,45	0,65

NOTE (*) The values indicated are to be considered indicative, they can be varied in function of the characteristics of the piece to be processed



LE New series, can be equipped with a wide range of TRACK RAIL see our Technical Proposal



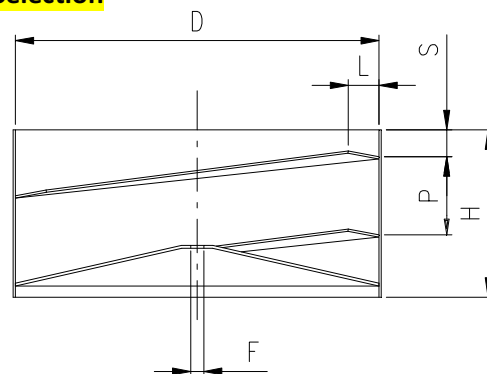
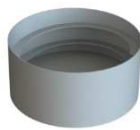
BOWL FEEDERS



C01 CYLINDRICAL BOWLS

Inside Selection

Bowls are made of very high quality row material. Dimensions and geometries, are the synthesis of more than half a century of lived experience in the field of selection. The wide range of shapes and sizes of STANDARD slopes, meets most of the requests that the market requires. TUMAC's Items are designed and manufactured basing on the end-user's requirements, in order to guarantee performance, reliability, user-friendly operations with an excellent match of value-for-money. For any information, please do not hesitate to contact us.



Basic Criteria application area

Continuous transport of components and for handling small parts

TECHNICAL DATA

Standard TUMAC Supply:

Material: Stainless steel AISI 304 Sandblasted

Upon request, we can supply the Bowl Customized for your requirement

Rules according to TUMAC's Standard

NOTE: * To be defined the feed output direction "Clockwise – Counterclockwise"

BOWLS with SPECIAL Finishing:

- Stainless steel AISI 316
- Additional Pitch
- Welding All inside/outside
- Polishing Mirror inside/outside
- Silk Finish Matt inside/outside
- Special Coating Wear Polyurethane Spray
- Special Coating Wear Pasted Wear

Data Sheet CYLINDRICAL BOWLS

INSIDE selection

Type Bowls	Suitable Drive Units	D mm	H mm	L mm	P mm	S mm	F mm	Capacity dm3	Weight Kg
100A	CHTB 10	95	35	7	14	10,50	Central	0,00	0,00
150A	CHTB 15	146	60	12	18	12,00	Central	0,00	0,00
150B		146	60	12	20	12,00	Central	0,00	0,00
200A	CHTB 20	200	80	15	25-35	15,00	Central	0,00	0,00
200B		200	80	15	30-40	15,00	Central	0,00	0,00
250A	CHTB 25	250	80	20	35-44	24,00	Central	0,00	0,00
250B		250	80	25	35-44	24,00	Central	0,00	0,00
300A	CHTB 30	300	100	20	35-45	24,00	Central	0,00	0,00
300B		300	100	25	35-45	24,00	Central	0,00	0,00
350A	CHTB 35	350	150	30	50-60	29,00	Central	0,00	0,00
400A	CHTB 40	400	150	35	60-70	46,00	Central	0,00	0,00
400B		400	150	40	60-70	46,00	Central	0,00	0,00
500A	CHTB 50-601	500	200	35	60-70	41,00	Central	0,00	0,00
500B		500	200	40	60-70	41,00	Central	0,00	0,00
500C		500	200	50	60-70	41,00	Central	0,00	0,00
500D		500	200	60	60-70	41,00	Central	0,00	0,00
500E		500	200	70	60-70	41,00	Central	0,00	0,00
608A		608	250	40	80-90	55,00	Central	0,00	0,00
608B	CHTB 61	608	250	50	80-90	55,00	Central	0,00	0,00
608C		608	250	60	80-90	55,00	Central	0,00	0,00
608D		608	250	70	80-90	55,00	Central	0,00	0,00



For more information, PLS do not hesitate to contact us



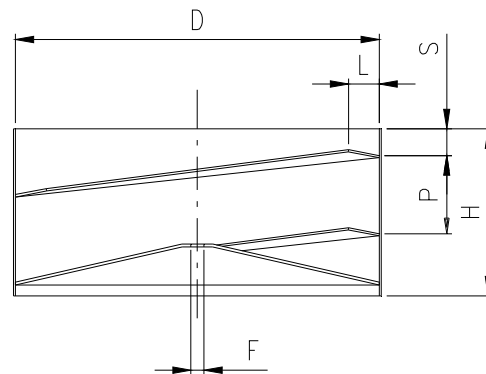
BOWL FEEDERS



C02 CYLINDRICAL BOWLS

Outside Selection "AMERICA"

Bowls are made of very high quality row material. Dimensions and geometries, are the synthesis of more than half a century of lived experience in the field of selection. The wide range of shapes and sizes of STANDARD slopes, meets most of the requests that the market requires. TUMAC's Items are designed and manufactured basing on the end-user's requirements, in order to guarantee performance, reliability, user-friendly operations with an excellent match of value-for-money. For any information, please do not hesitate to contact us.



Basic Criteria application area

Continuous transport of components and for handling small parts
High linear production rate and continuous throughput of pieces

TECHNICAL DATA

Standard TUMAC Supply:

Material: Stainless steel AISI 304 Sandblasted

Upon request, We can supply the Bowl Customized for your requirement

Rules according to TUMAC's Standard

NOTE:* To be defined the feed output direction "Clockwise – Counterclockwise"

BOWLS with SPECIAL Finishing:

- Stainless Steel AISI 316
- Welding All inside/outside
- Polishing Mirror inside/outside
- Silk Finish Matt inside/outside
- Special Coating Wear Polyurethane Spray
- Special Coating Wear Pasted Wear

Data Sheet CYLINDRICAL BOWLS

OUTSIDE selection "type AMERICA"

Type	Suitable	D	H	L	P	S	F	Capacity	Weight
Bowls	Drive Units	mm	mm	mm	mm	mm	mm	dm3	Kg
209A	CHTB 20	200	120	15	30-45	25,00	Central	0,00	0,00
259A	CHTB 25	250	150	20	30-45	25,00	Central	0,00	0,00
259B		250	150	25	30-45	25,00	Central	0,00	0,00
309A	CHTB 30	300	200	20	40-60	30,00	Central	0,00	0,00
309B		300	200	25	40-60	30,00	Central	0,00	0,00
359A	CHTB 35	350	220	30	45-65	35,00	Central	0,00	0,00
409A	CHTB 40	400	240	35	50-70	35,00	Central	0,00	0,00
409B		400	240	40	50-70	35,00	Central	0,00	0,00
509A	CHTB 50-601	500	295	35	65-85	40,00	Central	0,00	0,00
509B		500	295	40	65-85	40,00	Central	0,00	0,00
509C		500	295	50	65-85	40,00	Central	0,00	0,00
509D		500	295	60	65-85	40,00	Central	0,00	0,00
509E		500	295	70	65-85	40,00	Central	0,00	0,00
609A	CHTB 61	608	300	40	70-90	35,00	Central	0,00	0,00
609B		608	300	50	70-90	35,00	Central	0,00	0,00
609C		608	300	60	70-90	35,00	Central	0,00	0,00
609D		608	300	70	70-90	35,00	Central	0,00	0,00
1006A	TB10	752	300	50	90-120	50,00	Central	0,00	0,00
1006B		752	400	60	100-130	70,00	Central	0,00	0,00
1006C		752	400	70	100-130	70,00	Central	0,00	0,00
1006D		752	450	80	110-140	80,00	Central	0,00	0,00
1006E		752	450	90	110-140	80,00	Central	0,00	0,00



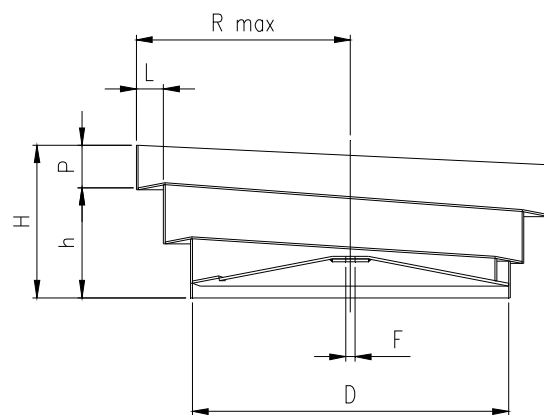
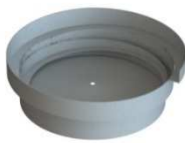
For more information, PLS do not hesitate to contact us





C03 STEPPED BOWLS

Bowls are made of very high quality row material. Dimensions and geometries, are the synthesis of more than half a century of lived experience in the field of selection. The wide range of shapes and sizes of STANDARD slopes, meets most of the requests that the market requires. TUMAC's Items are designed and manufactured basing on the end-user's requirements, in order to guarantee performance, reliability, user-friendly operations with an excellent match of value-for-money. For any information, please do not hesitate to contact us.



Basic Criteria application area

Larger loads and larger components see also conical bowls
His capacity is larger than a cylindrical bowl's one.
A further advantage is that components do not jam in the tracks

TECHNICAL DATA

Standard TUMAC Supply:

Material Stainless steel AISI 304 Sandblasted

Upon request, We can supply the Bowl Customized for your requirement

Rules according to TUMAC's Standard

NOTE:* To be defined the feed output direction "Clockwise – Counterclockwise"

BOWLS with SPECIAL Finishing:

- Stainless Steel AISI 316
- Welding All inside/outside
- Polishing Mirror inside/outside
- Silk Finish Matt inside/outside
- Special Coating Wear Polyurethane Spray
- Special Coating Wear Pasted Wear

Data Sheet STOPPED BOWLS

Type	Suitable	D	H	L	P	h	R	F	Capacity	Weight
Bowls	Drive Units	mm	mm	mm	mm	mm	mm	mm	dm3	Kg
155A	CHTB 15	146	67	15	20	52	103	Central	0,00	0,00
205A	CHTB 20	200	93	15	25-35	72	130	Central	0,00	0,00
205B		200	93	20	25-35	72	140	Central	0,00	0,00
255A	CHTB 25	250	97	20	25-40	77	165	Central	0,00	0,00
255B		250	97	25	25-40	77	175	Central	0,00	0,00
305A	CHTB 30	300	112	20	35-40	87	190	Central	0,00	0,00
305B		300	112	25	35-40	87	200	Central	0,00	0,00
355A	CHTB 35	350	155	30	45-60	117	235	Central	0,00	0,00
355B		350	155	35	45-60	117	245	Central	0,00	0,00
405A	CHTB 40	400	174	35	50-70	132	270	Central	0,00	0,00
405B		400	174	40	50-70	132	280	Central	0,00	0,00
405C		400	174	45	50-70	132	290	Central	0,00	0,00
505A	CHTB 50-601	500	203	40	60-80	152	330	Central	0,00	0,00
505B		500	203	45	60-80	152	340	Central	0,00	0,00
505C		500	203	50	60-80	152	350	Central	0,00	0,00
505D		500	230	60	70-90	172	370	Central	0,00	0,00
505E		500	230	70	70-90	172	390	Central	0,00	0,00
905A	CHTB 61	608	298	70	90	220	460	Central	0,00	0,00
905B		608	298	80	90	220	485	Central	0,00	0,00
905C		608	298	90	90	220	505	Central	0,00	0,00
1005A	TB 10	752	342	80	120	235	615	Central	0,00	0,00
1005B		752	342	90	120	235	645	Central	0,00	0,00



For more information, PLS do not hesitate to contact us



BOWL FEEDERS



C05 CONICAL BOWLS

Bottom with Sharp edge

Bowls are made of very high quality row material. Dimensions and geometries, are the synthesis of more than half a century of lived experience in the field of selection. The wide range of shapes and sizes of STANDARD slopes, meets most of the requests that the market requires. TUMAC's Items are designed and manufactured basing on the end-user's requirements, in order to guarantee performance, reliability, user-friendly operations with an excellent match of value-for-money. For any information, please do not hesitate to contact us.

Basic Criteria application area

Heavy sharp edged components, larger loads

The closed track type is particularly suitable for pharmaceutical applications

TECHNICAL DATA

Standard TUMAC Supply:

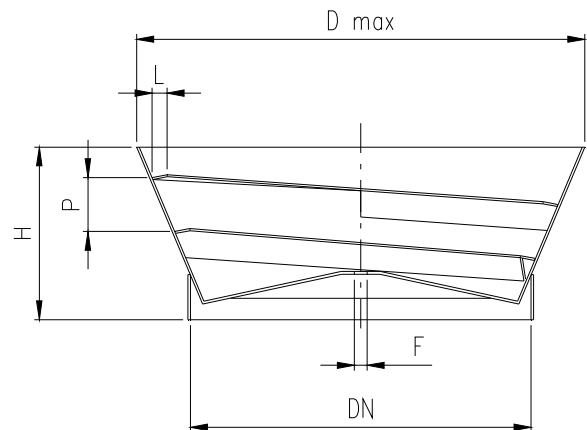
Material: Stainless Steel AISI 304 Sandblasted

Upon request, We can supply the Bowl Customized for your requirement

Rules according to TUMAC's Standard

NOTE: * To be defined the feed output direction "Clockwise – Counterclockwise"

BOWLS with SPECIAL Finishing: See STD Conical BOWLS "Bottom with Radius"



Data Sheet CONTENITORE CONICO

Fondo a SPIGOLO

Type	Suitable	DN	Dmax	H	L	P	α°	F	Capacity	Weight
Bowls	Drive Units	mm	mm	mm	mm	mm	Degree	mm	dm3	Kg
254A	CHTB 25	250	335	120	12	50-60	50°	Central	0,00	0,00
304A	CHTB 30	300	390	125	12	60-70	50°	Central	0,00	0,00
304B		300	390	125	15	60-70	50°	Central	0,00	0,00
354A	CHTB 35	350	500	160	12	70-80	60°	Central	0,00	0,00
354B		350	500	160	15	70-80	60°	Central	0,00	0,00
404A	CHTB 40	400	620	220	15	80-90	60°	Central	0,00	0,00
404B		400	620	220	20	80-90	60°	Central	0,00	0,00
504A	CHTB 50-601	500	750	180	15	100-130	80°	Central	0,00	0,00
504B		500	750	180	20	100-130	80°	Central	0,00	0,00
504C		500	750	180	25	100-130	80°	Central	0,00	0,00
504D		500	800	210	15	100-130	80°	Central	0,00	0,00
504E		500	800	210	20	100-130	80°	Central	0,00	0,00
504F		500	800	210	25	100-130	80°	Central	0,00	0,00
504G		500	850	240	15	100-130	80°	Central	0,00	0,00
504H		500	850	240	20	100-130	80°	Central	0,00	0,00
504L		500	850	240	25	100-130	80°	Central	0,00	0,00
504M		500	900	270	15	100-130	80°	Central	0,00	0,00
504N		500	900	270	20	100-130	80°	Central	0,00	0,00
504P		500	900	270	25	100-130	80°	Central	0,00	0,00
504R		500	950	300	15	100-130	80°	Central	0,00	0,00
504S		500	950	300	20	100-130	80°	Central	0,00	0,00
504T		500	950	300	25	100-130	80°	Central	0,00	0,00
604A	CHTB 61	608	1.000	400	20	100-160	60°	Central	0,00	0,00
604B		608	1.000	400	25	100-160	60°	Central	0,00	0,00
604C		608	1.000	400	30	100-160	60°	Central	0,00	0,00
604D		608	1.050	400	20	100-160	70°	Central	0,00	0,00
604E		608	1.050	400	25	100-160	70°	Central	0,00	0,00
604F		608	1.050	400	30	100-160	70°	Central	0,00	0,00
604G		608	1.090	325	20	100-160	80°	Central	0,00	0,00
604H		608	1.090	325	25	100-160	80°	Central	0,00	0,00
604L		608	1.090	325	30	100-160	80°	Central	0,00	0,00
1004A	TB10	752	1.250	450	30	130-150	80°	Central	0,00	0,00



For more information, PLS do not hesitate to contact us

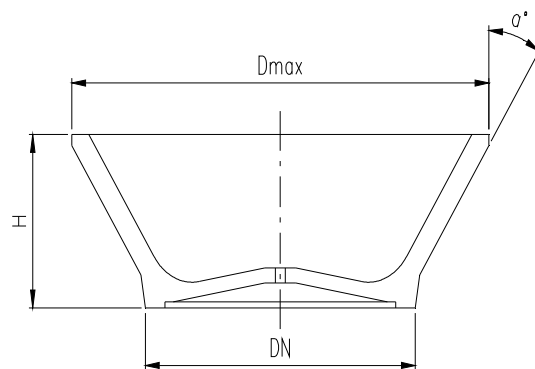


BOWL FEEDERS



C06 FIBER BOWLS

Bowls are made of very high quality row material. Dimensions and geometries, are the synthesis of more than half a century of lived experience in the field of selection. The wide range of shapes and sizes of STANDARD slopes, meets most of the requests that the market requires. TUMAC's Items are designed and manufactured basing on the end-user's requirements, in order to guarantee performance, reliability, user-friendly operations with an excellent match of value-for-money. For any information, please do not hesitate to contact us.



Basic Criteria application area

Small components with simple geometry and where mass production of feeders is required

Polyamide bowls have low friction and can be specially machined to customer's specifications

They also have a low friction and are less noisy.

TECHNICAL DATA

Standard TUMAC Supply:

STD Compound FIBER TUMAC® facing finish

Upon request, We can supply the Bowl Customized for your requirement

Rules according to TUMAC's Standard

NOTE:* To be defined the feed output direction "Clockwise – Counterclockwise"

Data Sheet POLYAMIDE - FV CONICAL BOWLS

Type	Suitable	DN	Dmax	H	L	P	α°	F	Capacity	Weight
Bowls	Drive Units	mm	mm	mm	mm	mm	Degree	mm	dm3	Kg
1071	CHTB 10	102	135	54	CUSTOMIZED		30°	Central	0,00	0,00
1571	CHTB 15	149	239	98			30°	Central	0,00	0,00
2071	CHTB 20	192	278	96			30°	Central	0,00	0,00
2571	CHTB 25	220	322	106			30°	Central	0,00	0,00
3071	CHTB 30	255	365	126			30°	Central	0,00	0,00
3571	CHTB 35	345	530	167			35°	Central	0,00	0,00



For more information, PLS do not hesitate to contact us

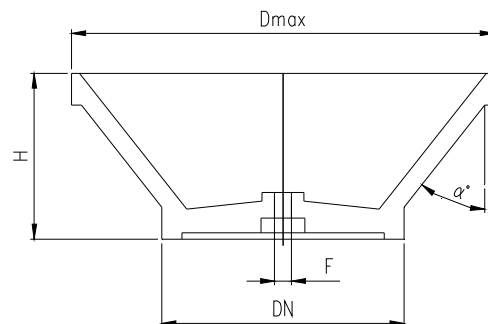
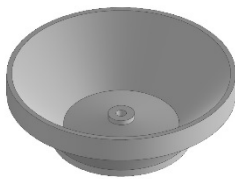


BOWL FEEDERS



C07 ALUMINIUM BOWLS

Bowls are made of very high quality row material. Dimensions and geometries, are the synthesis of more than half a century of lived experience in the field of selection. The wide range of shapes and sizes of STANDARD slopes, meets most of the requests that the market requires. TUMAC's Items are designed and manufactured basing on the end-user's requirements, in order to guarantee performance, reliability, user-friendly operations with an excellent match of value-for-money. For any information, please do not hesitate to contact us.



Basic Criteria application area

Small components with simple geometry and where mass production of feeders is required

Hard Aluminum bowls have low friction and can be specially tooled to customer's SPECIAL specifications

TECHNICAL DATA

Standard TUMAC Supply:

STD Duralluminium, facing finish

Upon request, We can supply the Bowl Customized for your requirement

Rules according to TUMAC's Standard

NOTE: * To be defined the feed output direction "Clockwise – Counterclockwise"

Data Sheet HARD ALUMINIUM CONICAL BOWLS

Type	Suitable	DN	Dmax	H	L	P	α°	F	Capacity	Weight
Bowls	Drive Units	mm	mm	mm	mm	mm	Degree	mm	dm3	Kg
1581A	CHTB 15	90	150	60	CUSTOMIZED		40°	Central	0,00	0,00
1581B		110	180	60			40°	Central	0,00	0,00
2081	CHTB 20	148	248	83			40°	Central	0,00	0,00
2581	CHTB 25	179	298	96			40°	Central	0,00	0,00
3081	CHTB 30	179	298	96			40°	Central	0,00	0,00



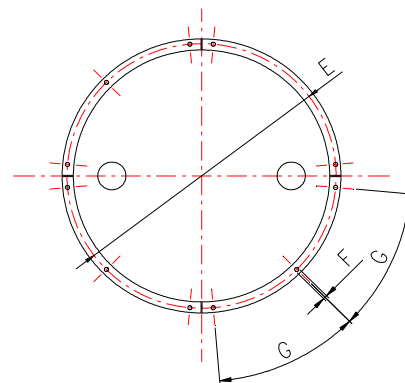
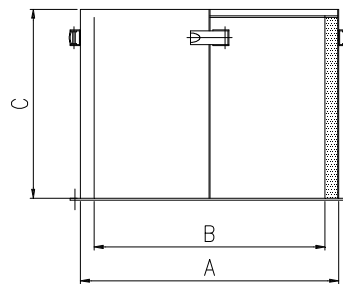
For more information, PLS do not hesitate to contact us





D01 CILINDRICA - GOCCIA

Le Cappe Afoniche o Cabine di Protezione ed Antipolvere, sono realizzate con materiali di Qualità, nelle officine TUMAC. Dimensioni e Geometrie proposte, soddisfano la maggior parte delle richieste che il mercato richiede. I modelli a geometria Circolare e/o a Goccia, si caratterizzano per le dimensioni ridotte e sono dotate di un comodo coperchio in Policarbonato, per facilitare le operazioni di carico. La versione Quadrata e/o Rettangolare, hanno la struttura in Alluminio o in Acciaio INOX, con porte e pannelli realizzati in varie tipologie di materiali, in funzione delle richieste del Cliente. Se non trovate in questa presentazione il prodotto che state cercando, non esitate a contattare il ns. SERVIZIO VENDITE, insieme troveremo la Soluzione al vostro Problema. TUMAC fornisce i migliori prodotti Standard presenti sul mercato, con un eccellente rapporto QUALITA' / PREZZO.



Criteri basilari per la scelta

- Ideali per limitare e contenere la rumorosità dei sistemi di alimentazione. Inoltre gli isolatori afonici, sono una valida ed economica soluzione per la protezione dei Sistemi, da polvere e dalle impurità esterne.
- La versione senza materassino fonoassorbente, è un sistema economico per il riparo degli Operatori, e un valido dispositivo per evitare manomissioni

TECHNICAL DATA

FORNITURA STANDARD:

- Materiale: Acciaio al Carbonio verniciatura Grigio RAL 7035 Finitura Lucido "Bucciato"
- Coperchio superiore in Policarbonato incernierato
- Materiale Fonoassorbente STD

Protocolli di Fabbricazione: STANDARD TUMAC

NOTE: *

FINITURE richieste SPECIALI

- Acciaio INOX Finitura a "Satinato fine" interno/esterno
- Acciaio INOX Finitura a "Specchio" esterno
- Verniciatura e finiture SPECIALI a richiesta

Siamo in grado di Soddisfare ogni tipo di richiesta con soluzioni CUSTOMIZZATE

Data Sheet

CAPPE Afoniche/Insonorizzanti

Caratteristiche	A	B	C	N# Settori	E	F	G
Modello	Diametro ESTERNO mm	Diametro INTERNO (utile) mm	Altezza mm	q.ty	mm	mm	mm
SC 400	400	360	500	4	Richiedere specifico DWG		
SC 450	450	410	500	4			
SC 500	500	460	500	4			
SC 550	550	510	550	4			
SC 600	600	560	550	4			
SC 650	650	610	550	4			
SC 700	700	660	650	4			
SC 750	750	710	650	4			
SC 800	800	760	650	4			
SC 850	850	810	650	4			
SC 900	900	860	650	4			
SC 950	950	910	650	4			
SC 1000	1.000	960	650	4			
SC 1100	1.100	1.060	750	4			
SC 1200	1.200	1.160	750	4			
SC 1300	1.300	1.260	750	6			
SC 1400	1.400	1.360	750	6			



Per ogni tipo di INFORMAZIONE, non esitate a contattare il ns. Ufficio Tecnico-Commerciale





D02 QUADRATA - RETTANGOLARE

Le Cappe Afoniche o Cabine di Protezione ed Antipolvere, sono realizzate con materiali di Qualità, nelle officine TUMAC. Dimensioni e Geometrie proposte, soddisfano la maggior parte delle richieste che il mercato richiede. I modelli a geometria Circolare e/o a Goccia, si caratterizzano per le dimensioni ridotte e sono dotate di un comodo coperchio in Policarbonato, per facilitare le operazioni di carico. La versione Quadrata e/o Rettangolare, hanno la struttura in Alluminio o in Acciaio INOX, con porte e pannelli realizzati in varie tipologie di materiali, in funzione delle richieste del Cliente. Se non trovate in questa presentazione il prodotto che state cercando, non esitate a contattare il ns. SERVIZIO VENDITE, insieme troveremo la Soluzione al vostro Problema. TUMAC fornisce i migliori prodotti Standard presenti sul mercato, con un eccellente rapporto QUALITA' / PREZZO.



Criteri basilari per la scelta

- Ideali per limitare e contenere la rumorosità dei sistemi di alimentazione. Inoltre gli isolatori afonici, sono una valida ed economica soluzione per la protezione dei Sistemi, da polvere e dalle impurità esterne.
- La versione senza materassino fonoassorbente, è un sistema economico per il riparo degli Operatori, e un valido dispositivo per evitare manomissioni

TECHNICAL DATA

FORNITURA STANDARD:

- Telaio in Alluminio Anodizzato
- Pannelli in "Dibond" (Polietilene+Alluminio)
- N° 1 Porta con cerniera + n°1 Pannello removibile
- Coperchio superiore in Policarbonato incernierato
- Materiale Fonoassorbente STD

FINITURE richieste SPECIALI

- Acciaio INOX con Finitura SPECIALE
- Materiale Insonorizzante SPECIALE
- Verniciatura e finiture SPECIALI a richiesta

Siamo in grado di Soddisfare ogni tipo di richiesta con soluzioni CUSTOMIZZATE

Data Sheet

CAPPE Afoniche/Insonorizzanti QUADRATE - RETTANGOLARI

Caratteristiche Dimensioni ESTERNE

Quadrate/Rettangolari	Quadrata	Rettangolare	Altezza	Porte Ispezione
Modello	mm	mm	mm	q.ty
SCS 250	250x250	0	250	2
SCS 300	300x300	0	300	2
SCS 350	350x350	0	350	2
SCS 400	400x400	0	400	2
SCS 450	450x450	0	450	2
SCS 500 SCR 300700	500x500	300x700	450	2
SCS 550	550x550	0	500	2
SCS 600 SCR 350800	600x600	350x800	500	2
SCS 650	650x650	0	550	2
SCS 700 SCR 400900	700x700	400x900	550	2
SCS 750	750x750	0	600	2
SCS 800 SCR 5001000	800x800	500x1000	600	2
SCS 850	850x850	0	700	2
SCS 900 SCR 5501200	900x900	550x1200	700	2
SCS 950	950x950	0	700	2
SCS 1000 SCR 7001400	1000x1000	700x1400	750	2
S 1100	1100x1100	0	750	2
SCS 1200 SCR 8001600	1200x1200	800x1600	750	2
SCS 1300	1300x1300	0	800	2
SCS 1400 SCR 9001800	1400x1400	900x1800	800	2



Per ogni tipo di INFORMAZIONE, non esitate a contattare il ns. Ufficio Tecnico-Commerciale

FEEDER STAND - SUPPORTS



E01 ADJUSTABLE COLUMNS

Devices that provide a wide range of adjustment to allow precise alignment. Sturdy construction, in carbon steel welded, designed for heavy jobs. The TUMAC Equipment are designed and manufactured based on the end-users requirements, in order to guarantee performance, reliability, user-friendly operation with an excellent match of value-for-money. For any information, please do not hesitate to contact us.



Basic Criteria application

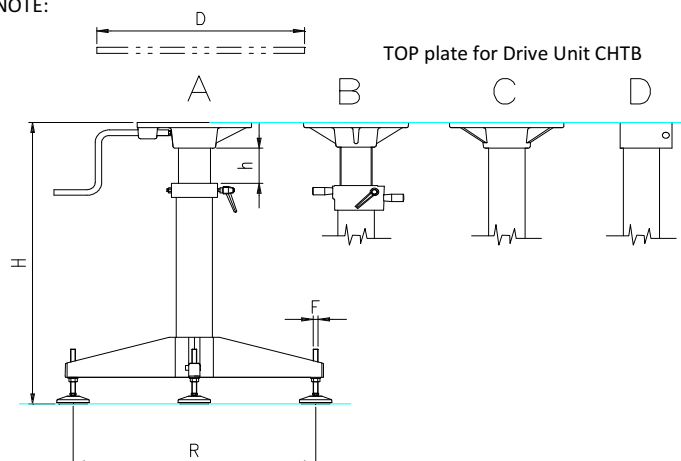
*

TECHNICAL DATA and TYPE SIZES

- A Easy Adjustable Column by Crank Handle
- B Adjustable Threaded Column
- C Column with Flange
- D Column with Top Bracket

Rules according ESM machinery directive 2006/42/CE

NOTE:



Data Sheet FEEDER STAND-SUPPORTS and Top Plates

Type	N	R	F	H	h	D	Weight
	N# Foot print	mm	mm	mm	mm MAX	Top Plates dimension mm	Kg
A Easy Adjustable Column by Crank Handle	4	600	M12	500 - 1200	200	Suitable to accept TUMAC Drive Units	0
A Easy Adjustable Column by Crank Handle	5	800	M20	500 - 1200	200	Suitable to accept TUMAC Drive Units	0
B Adjustable Threaded Column	4	600	M12	500 - 1200	200	Suitable to accept TUMAC Drive Units	0
B Adjustable Threaded Column	5	800	M20	500 - 1200	200	Suitable to accept TUMAC Drive Units	0
C Column with Flange	4	600	M12	500 - 1200	0	Suitable to accept TUMAC Drive Units	0
C Column with Flange	5	800	M20	500 - 1200	0	Suitable to accept TUMAC Drive Units	0
D Column with Top Bracket	4	600	M12	500 - 1200	0	Suitable to accept TUMAC Drive Units	0
D Column with Top Bracket	5	800	M20	500 - 1200	0	Suitable to accept TUMAC Drive Units	0

STANDARD manufacturing Supply:

- Bracket / Support (with exclusion of the TOP plate)
- "+/-" 20 Levelling Foot print
- Column and Frame in Carbon Steel painted Grey RAL 7035

OPTIONAL

- Frame with "Swivel - Caster Wheels"
- Wide range of accessories for every type of application needs.



Upon request, We can supply the Feeders Support and top plate Customized on according your requirement

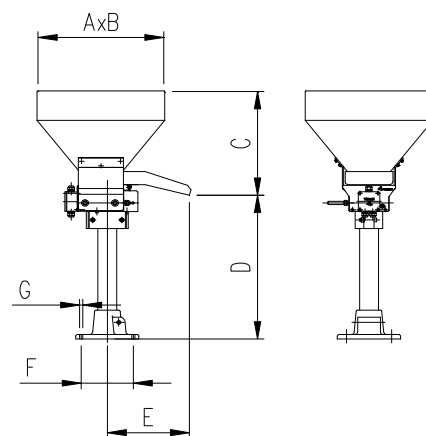


VIBRATORY HOPPER



F01 VIBRATORY HOPPER TR

Usually the Hoppers are used to bulk store the components before they reach the bowl, creating large loading autonomies. Sturdy construction, designed for heavy duty and continuous operation, with zero maintenance. The range of shapes and sizes offered by TUMAC, creates solutions for any type of problem related to the handling of the parts within the production cycle. The TUMAC Equipment are designed and manufactured based on the end-users requirements, in order to guarantee performance, reliability, user-friendly operation with an excellent match of value-for-money. For any information, please do not hesitate to contact us.



Basic Criteria application

- Vibratory hopper is typically used for smaller and lighter components as they are usually dropped from a very small height into the bowl feeder below without causing any damage to the bowl or components.
- A sensor is held above the bowl and when the sensor detects a minimum quantity of components, the hopper sitting on a linear drive vibrates and shakes the parts into the bowl. When the sensor detects there are enough components in the bowl, the hopper will stop vibrating.
- Some hoppers have a small chute or funnel at the bottom and others may just be a small flat surface usually used for very small parts.

TECHNICAL DATA

Connection Cable length SCHUKO M 2P+T 16A 2000mm
 Power supply STD 230V AC 50Hz
 Upon request, We can supply with different voltages and frequencies
 Rules according ESM machinery directive 2006/42/CE
 NOTE:

Standard TUMAC Supply:

Material: Carbon Steel TUMAC Standard Painting Gray RAL 7035 finishing "Goffered"

Hopper with SPECIAL Finishing:

- Stainless steel
- Welding All inside/outside
- Polishing Mirror inside/outside
- Silk Finish Matt inside/outside
- Special Coating Wear Polyurethane Spray
- Special Coating Wear Pasted Wear

Upon request, we can supply the Bowl Customized for your requirement

Data Sheet

HOPPERS VIBRATORY TR "Light" SILOS

TYPE	Capacity dm ³	AxB mm	C mm	D mm	E mm	F mm	G mm
TR 10	10	250x250	305	Variabile	165	120	8,5
TR 25	25	400x400	365	Variabile	260	165	13
TR 50	50	450x450	420	Variabile	260	165	13
TR 100	100	580x580	565	Variabile	340	225	8,5
TR 200	200	750x750	720	Variabile	340	225	8,5



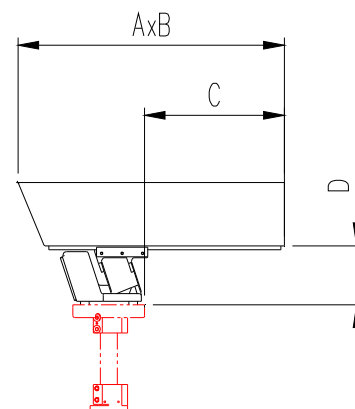
New series, can be equipped with a wide range of OPTIONAL/TOOLS see our Technical Proposal





F02 VIBRATORY HOPPER TRV

Usually the Hoppers are used to bulk store the components before they reach the bowl, creating large loading autonomies. Sturdy construction, designed for heavy duty and continuous operation, with zero maintenance. The range of shapes and sizes offered by TUMAC, creates solutions for any type of problem related to the handling of the parts within the production cycle. The TUMAC Equipment are designed and manufactured based on the end-users requirements, in order to guarantee performance, reliability, user-friendly operation with an excellent match of value-for-money. For any information, please do not hesitate to contact us.



Basic Criteria application

- Vibratory hopper is typically used for smaller and lighter components as they are usually dropped from a very small height into the bowl feeder below without causing any damage to the bowl or components.
- A sensor is held above the bowl and when the sensor detects a minimum quantity of components, the hopper sitting on a linear drive vibrates and shakes the parts into the bowl. When the sensor detects there are enough components in the bowl, the hopper will stop vibrating.

TECHNICAL DATA

Connection Cable length Socket Male 3+1 pin 250V 10A EN 61984 2000mm

Power supply STD 230V AC 50Hz

Upon request, We can supply with different voltages and frequencies

Rules according ESM machinery directive 2006/42/CE

NOTE:

Standard TUMAC Supply:

Material: Carbon Steel TUMAC Standard Painting Gray RAL 7035 finishing "Goffered"

Hopper with SPECIAL Finishing:

- Stainless steel
- Welding All inside/outside
- Polishing Mirror inside/outside
- Silk Finish Matt inside/outside
- Special Coating Wear Polyurethane Spray
- Special Coating Wear Pasted Wear

OPTIONAL:

- Support - Frame with column and flange
- Level switch device
- Control Box type (managing Drive Unit TRM + Level switch)
- Wide range of accessories for every type of application needs.
- The hoppers are available in many different shapes and sizes depending on the component being used.

Upon request, we can supply the Bowl Customized for your requirement

Data Sheet

HOPPER VIBRATORY TRV + LE

TYPE	Capacity dm3	AxB mm	C (*) mm	D mm
TRV 5 + LE 2	5	210x70	130	150
TRV 10 + LE 2	10	630x155	300	150
TRV 20 + LE 2	20	775x250	420	150
TRV 40 + LE 3	40	700x300	380	170
TRV 60 + LE 4	60	740x400	400	180
TRV 80 + LE 4	80	950x455	500	180
TRV 150 + LE 4	150	1000x500	520	180

Note: (*) C The values indicated are to be considered indicative

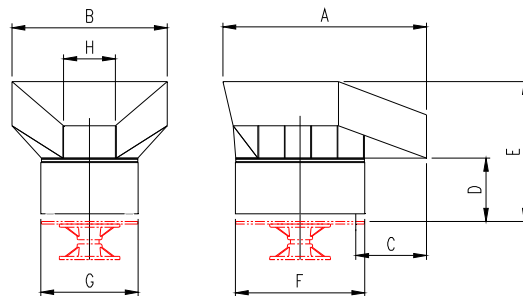


New series, can be equipped with a wide range of OPTIONAL/TOOLS see our Technical Proposal



F03 VIBRATORY HOPPER TV

Usually the Hoppers are used to bulk store the components before they reach the bowl, creating large loading autonomies. Sturdy construction, designed for heavy duty and continuous operation, with zero maintenance. The range of shapes and sizes offered by TUMAC, creates solutions for any type of problem related to the handling of the parts within the production cycle. The TUMAC Equipment are designed and manufactured based on the end-users requirements, in order to guarantee performance, reliability, user-friendly operation with an excellent match of value-for-money. For any information, please do not hesitate to contact us.



Basic Criteria application

- Vibratory hopper is typically used for Heavy components
- A sensor is held above the bowl and when the sensor detects a minimum quantity of components, the hopper sitting on a linear drive vibrates and shakes the parts into the bowl. When the sensor detects there are enough components in the bowl, the hopper will stop vibrating.

TECHNICAL DATA

Connection Cable length Socket Male 3+1 pin 250V 10A EN 61984 2000mm

Power supply STD 230V AC 50Hz

Upon request, We can supply with different voltages and frequencies

Rules according ESM machinery directive 2006/42/CE

NOTE:

Standard TUMAC Supply:

Material: Carbon Steel TUMAC Standard Painting Gray RAL 7035 finishing "Goffered"

Hopper with SPECIAL Finishing:

- Stainless steel
- Welding All inside/outside
- Polishing Mirror inside/outside
- Silk Finish Matt inside/outside
- Special Coating Wear Polyurethane Spray
- Special Coating Wear Pasted Wear

OPTIONAL:

- Level switch device
- Control Box type (managing Drive Unit TRM + Level switch)
- Wide range of accessories for every type of application needs.
- The hoppers are available in many different shapes and sizes depending on the component being used.
- The walls hopper can be covered with a special coating, wear-resistance and sound proof (Ask for quotation)

Upon request, we can supply the Bowl Customized for your requirement

Data Sheet

HOPPERS VIBRATORY TV "Heavy" SILOS

TYPE	Capacity dm3	H mm	AxB mm	C mm	D mm	E mm	F mm	G mm
TRV 150 + TV 80	150	200 - 400	955x725	290	290	650	600	450
TRV 250 + TV 80	250	200 - 250	950x770	290	290	790	600	450



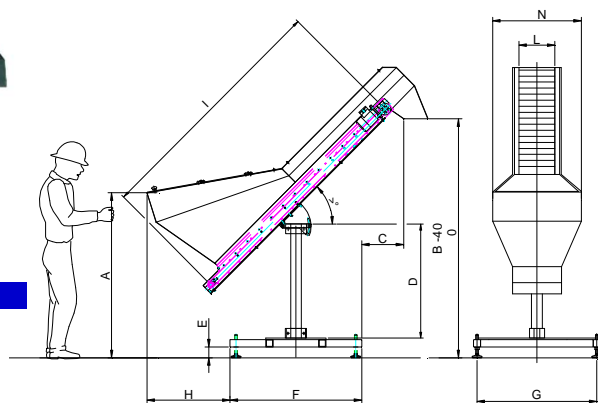
New series, can be equipped with a wide range of OPTIONAL/TOOLS see our Technical Proposal

HOPPER ELEVATORS



G01 ELEVATOR HOPPERS

Machines designed to manage and lift the pieces to the desired height, creating large loading autonomies. Sturdy construction, designed for heavy duty and continuous operation, with zero maintenance. The TUMAC Equipment are designed and manufactured based on the end-users requirements, in order to guarantee performance, reliability, user-friendly operation with an excellent match of value-for-money. For any information, please do not hesitate to contact us.



Basic Criteria application

- For heavy additional mass at the bowl
- For minor noise emission
- For more loading pieces into the bowl

Dedicated for transporting oriented or bulk pieces, they are available with different types of belts based on the pieces to be fed.

The length, width and feed speed can be varied based on customer requirements.

TECHNICAL DATA

Connection Cable length 1.800mm socket Male 3+1 pin 400V 16A
 Power supply STD 230/400V AC 50Hz 3P+T
 Rules according ESM machinery directive 2006/42/CE
 Upon request, We can supply with different voltages and frequencies

HOPPER ELEVATOR		Wheelbase	Wide Belt	Dimensions							Slope
Feature	Capacity	I	L	A	B	C	H	N	FxG	E	S
Type	dm3	mm	mm	mm	mm	mm	mm	mm	mm	mm	Degree
TE 15.120	120	1.500	150	Variable	Variable	Variable	Variable	580	800x600	90	Variable
TE 20.140	140	1.500	200	Variable	Variable	Variable	Variable	630	800x600	90	Variable
TE 30.180	180	1.500	300	Variable	Variable	Variable	Variable	730	800x600	90	Variable
TE 20.210	210	1.500	200	Variable	Variable	Variable	Variable	800	800x600	90	Variable
TE 30.250	250	1.500	300	Variable	Variable	Variable	Variable	900	800x600	90	Variable
TE 1.15.120	120	2.060	150	Variable	Variable	Variable	Variable	580	800x600	90	Variable
TE 1.20.140	140	2.060	200	Variable	Variable	Variable	Variable	630	800x600	90	Variable
TE 1.30.180	180	2.060	300	Variable	Variable	Variable	Variable	730	800x600	90	Variable
TE 1.20.210	210	2.060	200	Variable	Variable	Variable	Variable	800	800x600	90	Variable
TE 1.30.250	250	2.060	300	Variable	Variable	Variable	Variable	900	800x600	90	Variable
TE 1.30.320	320	2.060	300	Variable	Variable	Variable	Variable	1.000	800x600	90	Variable
TE 1.50.500	500	2.060	500	Variable	Variable	Variable	Variable	1.200	800x600	90	Variable

"±" 20
 Levelling Foot
 print

STANDARD manufacturing Supply:

Mod. TE (Elevator Hopper)

- N#1 Support with column and frame "H" Shape,
- N#4 adjustable foot print (Carbon Steel painted)
- N#1 set Hopper Cover fix in Polycarbonate
- N#1 Hopper loading door in Polycarbonate
- Timing/flat belt PVC with plate 10x10mm Industry utility (Special belts can be defined during order)
- Voltage 400V AC 50Hz 3P+T, power cable length 2.000mm, with socket Male 3+1 pin 400V 16A
- TUMAC Standard Painting Gray RAL 7035 finishing "Goffered"

Special DEVICES in OPTIONAL for mod. TE and TRM

- Level switch device (matching with Bowls CHTB)
- Hopper Level Switch
- Hopper Door Safety switch
- Panel Box type QE1 (managing Drive Unit + Level switch)
- Frame with n#4 "Swivel - Caster Wheels"
- Pieces fast discharging
- The walls hopper can be covered with a special coating, wear-resistance and sound proof (Ask for quotation)
- Hopper opening door Servo-assisted by pneumatic devices (Ask for quotation)
- Wide range of accessories for every type of application needs.



New series, can be equipped with a wide range of OPTIONAL/TOOLS see our Technical Proposal

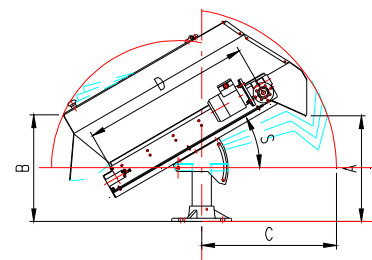


HOPPER ELEVATORS



G02 MOTORIZED HOPPERS

Machines designed to manage and lift the pieces to the desired height, creating large loading autonomies. Sturdy construction, designed for heavy duty and continuous operation, with zero maintenance. The TUMAC Equipment are designed and manufactured based on the end-users requirements, in order to guarantee performance, reliability, user-friendly operation with an excellent match of value-for-money. For any information, please do not hesitate to contact us.



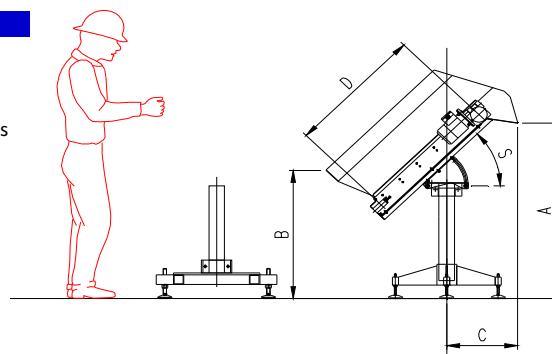
Basic Criteria application

- For heavy additional mass at the bowl
 - For minor noise emission
 - For more loading pieces into the bowl
- Dedicated for transporting oriented or bulk pieces, they are available with different types of belts based on the pieces to be fed.

The length, width and feed speed can be varied based on customer requirements.

TECHNICAL DATA

Connection Cable length 1.800mm socket Male 3+1 pin 400V 16A
 Power supply STD 230/400V AC 50Hz 3P+T
 Rules according ESM machinery directive 2006/42/CE
 Upon request, We can supply with different voltages and frequencies



HOPPER MOTORIZED		Weelbase	Wide Belt	Dimensions			Wide Hopper	Slope
Feature	Capacity	I	L	A	B	C	N	S
Type	dm3	mm	mm	mm	mm	mm	mm	Degree
TRM 15	15	550	150	Variable	Variable	Variable	250	Variable
TRM 50	50	500	200	Variable	Variable	Variable	500	Variable
TRM 80	80	800	300	Variable	Variable	Variable	560	Variable
TRM 120	120	1.220	300	Variable	Variable	Variable	560	Variable
TRM 200	200	800	300	Variable	Variable	Variable	760	Variable
TRM 275	275	800	300	Variable	Variable	Variable	635	Variable
TRM 300	300	1.220	300	Variable	Variable	Variable	635	Variable

STANDARD manufacturing Supply:

Mod. TE (Elevator Hopper)

- N#1 Support with column and frame "H" Shape,
- N#4 adjustable foot print (Carbon Steel painted)
- N#1 set Hopper Cover fix in Polycarbonate
- N#1 Hopper loading door in Polycarbonate
- Timing/flat belt PVC with plate10x10mm Industry utility (Special belts can be defined during order)
- Voltage 400V AC 50Hz 3P+T, power cable length 2.000mm, with socket Male 3+1 pin 400V 16A
- TUMAC Standard Painting Gray RAL 7035 finishing "Goffered"

Special DEVICES in OPTIONAL for mod. TE and TRM

- Level switch device (matching with Bowls CHTB)
- Hopper Level Switch
- Hopper Door Safety switch
- Panel Box type QE1 (managing Drive Unit + Level switch)
- Frame with n#4 "Swivel - Caster Wheels"
- Pieces fast discharging
- The walls hopper can be covered with a special coating, wear-resistance and sound proof (Ask for quotation)
- Hopper opening door Servo-assisted by pneumatic devices (Ask for quotation)
- Wide range of accessories for every type of application needs.



New series, can be equipped with a wide range of OPTIONAL/TOOLS see our Technical Proposal





H01 BELT CONVEYORS

TUMAC mini-band and maxi-band conveyors type NB and NBS are manufactured from Aluminium profiles and are especially suitable in small confined spaces. The NBS construction makes it possible to overcome potential problems at critical transfer point. The TUMAC belt conveyors are suitable for all kinds of Industries. The TUMAC Equipment are designed and manufactured according to the end-users requirements, in order to guarantee performance, reliability, user-friendly operations with an excellent match of value-for-money. For any information, please do not hesitate to contact us.



Basic Criteria application area

- LOW profile conveyors are used to transport small and light weight products such as medical or pharmaceutical products.
- STD profile conveyors are suitable for all kinds of Industries, (conveyor load 5-10kg)

TECHNICAL DATA

Protection Class IP54

Power supply STD 230/400V 50Hz

Upon request, We can supply with different voltages and frequencies

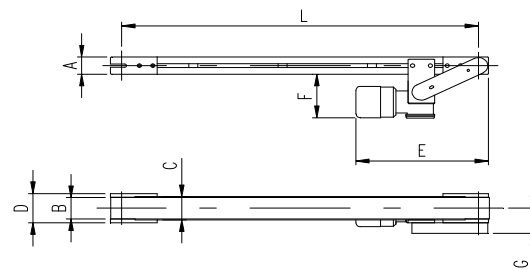
Control Boxes:

- Motor Protection switch for fixes speed conveyors
- Controller for variable speed conveyors
- Frequency Controller for variable speed conveyors

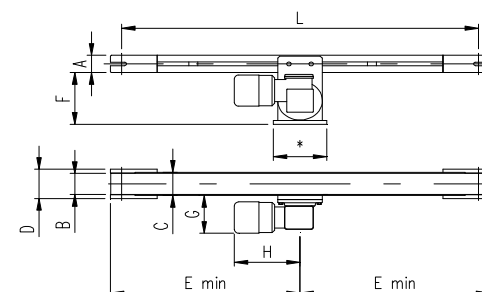
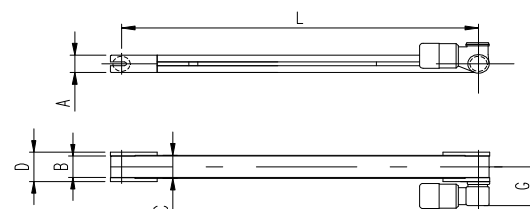
Rules according ESM machinery directive 2006/42/CE

NOTE:

We recommend the use of tow fixing points at a axial distance starting from 1500mm.
Rail guides and Special belts on request



Type NB "LOW or STD model"
End mounted drive unit



Type NBS "LOW or STD model"
Floating drive unit

Data Sheet

BELT CONVEYORS		Belt Width	Roller	Dimensions						Wheelbase
Feature	A	B	Ø	C	D	E	F	G	H	L
Type	mm	mm	mm	mm	mm	mm	mm	mm	mm	mm
NB 45	45	40	45	45	60	315	110	60	165	Variable
NB 60	45	55	45	60	75	315	110	65	165	Variable
NB 90	60	85	60	90	115	400	140	85	220	Variable
NB 150	50	145	50	150	175	395	145	115	220	Variable
NBS 20	20	15	20	17	20	Variable	110	105	155	Variable
NBS 30	34	26	30	30	46	Variable	130	145	215	Variable
NBS 45	45	40	45	45	60	Variable	135	85 - 230	165	Variable
NBS 60	45	55	45	60	75	Variable	135	85 - 230	165	Variable
NBS 90	60	85	60	90	115	Variable	120	95 - 285	220	Variable
NBS 150	50	145	50	150	175	Variable	120	155	220	Variable



NB and NBS New series, can be equipped with a wide range of Devices, see our Technical Proposal





101 ELEVATORS FEATURES

Machines designed to manage and lift the pieces to the desired height, creating large loading autonomies. Sturdy construction, designed for heavy duty and continuous operation, with zero maintenance.

The TUMAC Equipment are designed and manufactured based on the end-users requirements, in order to guarantee performance, reliability, user-friendly operation with an excellent match of value-for-money. For any information, please do not hesitate to contact us.



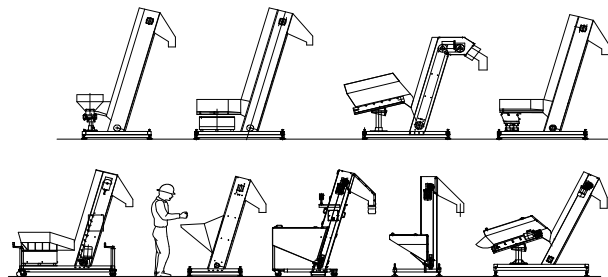
Basic Criteria application

- For heavy additional mass at the bowl
 - For minor noise emission
 - For more loading pieces into the bowl
 - Dedicated for transporting oriented or bulk pieces, they are available with different types of belts based on the pieces to be fed.
- The length, width and feed speed can be varied based on customer requirements.

TECHNICAL DATA

Connection Cable length	2000mm
Power supply STD	230/400V AC 50Hz 3P+T
Upon request, We can supply with different voltages and frequencies	
Rules according	ESM machinery directive 2006/42/CE

NOTE:



LIFT and ELEVATOR

Used for lifting and positioning in the share of pieces, in different sectors. Suitable for obtaining a height of output and an important autonomy. In addition to an vibrating System, they can be an good solution for the selection and orientation of the pieces, and of course with conveyor belts. The range and type of ELEVATORI TUMAC is probably the most complete and exhaustive response to issues related to 'handling - Feeding, for the Industrial Automation sector. **The modularity and the achievable configurations, allow a high number of possible combinations.** Below a summary of TUMAC Supply:

CHAIN Feeder ELEVATORS "LIGHT" – "HEAVY"

CHAIN Elevators are used to feed hot, medium-weight or sharp metal parts. The feeding system utilises steel chain belts on which steel pallets are welded or fixed. The width of the chain roller, the shape and the number of pallets are established during the design phase in accordance with the piece and the flow required.

The wide range of equipment and configurations of supplying allow to satisfy every need – request.

ELEVATORI a CATENA metallica (con Traini – Tapparella) versioni "LIGHT" – "HEAVY"

Gli elevatori a catena metallica, sono impiegati per alimentare pezzi metallici anche caldi, medio pesanti o taglienti. Per l'alimentazione vengono utilizzati nastri a tapparella in acciaio su cui sono saldate o avvitate le palette in acciaio. La larghezza della tapparella, la forma e il numero delle palette vengono stabilite in fase di progettazione in base al pezzo e alla cadenza richiesta.

Le dotazione previste e le configurazioni possibili sono tali da soddisfare ogni tipo di esigenza – richiesta, anche le più estreme.

MAGNETIC LIFT - ELEVATORS

The magnetic elevators are used to supply ferrous pieces such as: small metal parts, bushing, nails, pins, screws, scrap iron.

The feed system utilises high resistance polyurethane belts. The structure is made of AISI 304 stainless steel. The operation occurs by means of a vertical belt and a permanently magnetic shaft - roller.

A demagnetizer devices is applied at the output. The elevators require no maintenance, as all of the moving parts rotate on watertight bearings.

The wide range of equipment and configurations of supplying allow to satisfy every need – request.





102 ELEVATORS FEATURES

Machines designed to manage and lift the pieces to the desired height, creating large loading autonomies. Sturdy construction, designed for heavy duty and continuous operation, with zero maintenance.

The TUMAC Equipment are designed and manufactured based on the end-users requirements, in order to guarantee performance, reliability, user-friendly operation with an excellent match of value-for-money. For any information, please do not hesitate to contact us.

Basic Criteria application

- For heavy additional mass at the bowl
 - For minor noise emission
 - For more loading pieces into the bowl
 - Dedicated for transporting oriented or bulk pieces, they are available with different types of belts based on the pieces to be fed.
- The length, width and feed speed can be varied based on customer requirements.

TECHNICAL DATA

Connection Cable length	2000mm
Power supply STD	230/400V AC 50Hz 3P+T
Upon request, We can supply with different voltages and frequencies	
Rules according	ESM machinery directive 2006/42/CE

NOTE:



STEP FEEDERS new ELMulti STEP

Plate elevators are particularly suitable for feeding heavy materials such as: rods, small metal parts, pins, fittings, valves, screws and glass items such as: lamps, lenses, giftware. They are distinguished by the qualities of flexibility, silence, strength and delicacy in parts handling. The alignment of the pieces is carried out by linear vibrators placed at the output of the elevators. Pieces which are not aligned are recycled in a re-entry hopper. The materials used in the construction of the plates and brackets can vary and they are chosen in accordance with the characteristics of the specific pieces to be fed. TUMAC with the new and innovative line of EL multi-STEP offers a variety of machines are extremely versatile, designed to meet the needs of handling the most extreme.

Ideal for lifting pieces "delicate" where the action of contact and the stress between the surfaces must be minimized.

Designed for the cosmetic industry, the Feeder TUMAC EL multi-STEP is also successfully used in the industrial segment, to automate the process of handling of fabricated metal products.

A range of machines characterized by excellent qualities of robustness and reliability, guaranteed by the kinematic mechanism of lifting completely mechanical, with possibility to better adjust the rate of the cycle, for a perfect synchronization with the line to be fed.

The new Plate elevator TUMAC EL multi-STEP can power strip or linear vibrators, equipped with devices and systems for handling and orientation of the part.

The equipment provided and configurations are possible to satisfy every need - request, even the most extreme.

ELEVATORI - ORIENTATORI

Macchine che integrano le caratteristiche degli Elevatori, (autonomia ed un efficace controllo della dinamica di alimentazione dei pezzi), con l'aggiunta di alimentare il pezzo già Orientato. L'orientamento dei pezzi può essere eseguito su vibratori lineari oppure su nastri trasportatori. I pezzi non orientati vengono, se scartati, riportati sul dispositivo di orientamento, oppure veicolati nella tramoggia.

In funzione di esigenze e/o richieste particolari, la tramoggia a gravità può essere sostituita da un caricatore ausiliario vibrante o motorizzato. Un dispositivo posto sulla longitudinale dell'orientatore, ferma l'alimentazione dell'elevatore, quando la colonna dei pezzi ha raggiunto la lunghezza predefinita.

STANDARD manufacturing Supply:

- N#4 adjustable foot print
- N#1 set Hopper Cover fix in Polycarbonate
- N#1 Hopper loading door in Polycarbonate
- Timing/flat belt PVC Industry utility (Special belts can be defined during order)
- Voltage 400V AC 50Hz 3P+T, power cable length 2.000mm, with socket Male 3+1 pin 400V 16A
- TUMAC Standard Painting Gray RAL 7035 finishing "Goffered"

Special DEVICES in OPTIONAL

- Level switch device (matching with Bowls CHTB)
- Hopper Level Switch
- Hopper Door Safety switch
- Panel Box (managing Drive Unit + Level switch)
- Frame with n#4 "Swivel - Caster Wheels"
- Pieces fast discharging devices
- The walls hopper can be covered with a special coating, wear-resistance and sound proof (Ask for quotation)
- Hopper opening door Servo-assisted by pneumatic devices (Ask for quotation)
- Wide range of accessories for every type of application needs.



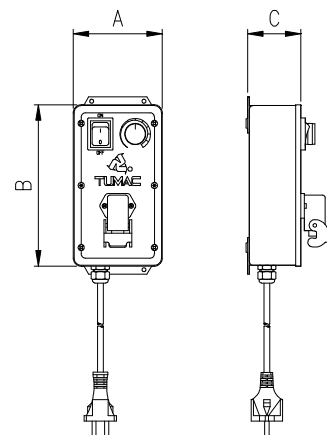
New series, can be equipped with a wide range of OPTIONAL/TOOLS see our Technical Proposal





L01 CONTROL PANELS

TUMAC offers a complete range of solutions and products for Electromagnetic Vibration System. Controller with Analog and Digital ADJUSTMENT a potentiometer, with technology "Fixed Frequency" or "Frequency Variable". Switchboards and Control Panel, Customized for the combined management of Hoppers / Elevators, belts and Vibration Management Devices with PLC, and drive with Inverter. Our last generation controller, allow continuity and constant supply, with a uniform distribution of the vibration with high index of performance, to vary the Weight - mass of the pieces to be processed. The TUMAC Equipment are designed and manufactured according to the end-users requirements, in order to guarantee performance, reliability, user-friendly operations with an excellent match of value-for-money. For any information, please do not hesitate to contact us.



CONTROLLERS Basic Criteria

- Fixed Frequency Controllers, the most used, to control the amplitude of vibration of the equipment (Circular or Linear)
- Variable Frequency Controllers, allowing you to tune the operation of the vibrator, by searching the optimum vibration frequency to vary the mass-weight into the bowl
- Card Control board IP20, for indoor installation Electric framework

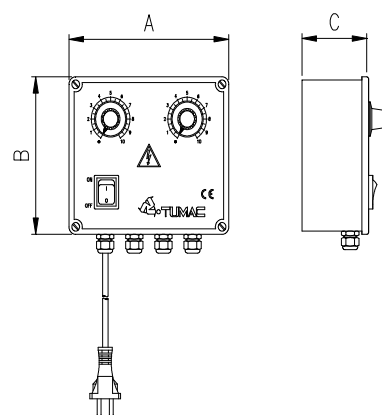
Basic Criteria for, Electric Frameworks, Control Panels, Box Controllers

- Switchboards, Box and Customized Operator Panels with PLC and Inverter drive, for Combined / Full Systems)
- Control Panel drive Vibrating Hoppers
- Control Panel drive Motorized Hoppers/Elevators
- Control Panel drive belts

TECHNICAL DATA Controller Vibrating Units

Protection Rating	IP54 / IP65
Connection Cable length	1800mm with socket Male SCHUKO M 2P+T 16A CEE7/4
STD Power supply	230/115V +/-20% 50/60Hz
Operating temperature	0°C / +45°C
Range relative Humidity	80% up to 31°C
Rules according	ESM machinery directive 2006/42/CE

Note: Upon request, We can supply with different voltages and frequencies



Data Sheet

STD CONTROLLERS – Drives

Caratteristiche	AxBxC	Power supply +/-20%	Max.	Frequency	Drive Unit	Functional
Type	mm	50/60Hz	W	Cycle/min	type	Operation
EL7 ST-PLC	90x205xsp.105	230/115V	1,5	3000-6000	Drive Vibrating Units Circular,Linear, Vibrating Hoppers	PLS ask Detailed Technical Data Sheet
EL7 SE-PLC	90x205xsp.105	230/115V	1,5	3000-6000	Drive Vibrating Units Circular,Linear, Vibrating Hoppers	
TRM02	70x70xsp.35	230/115V	1,5	3000-6000	Vibrating Hoppers Motorized Hoppers, Elevators, Full System Devices	
QE1	170x205xsp.105	400/230V	Variable			



For more information, PLS do not hesitate to contact us





M01 Sorting devices

After about to 50 years of uninterrupted activity, TUMAC is proud to be one of the leading companies in the sector of Industrial Automation systems and components, for the handling and Feeding of large batch production for the Automotive, Cosmetics, Packaging, Pharmaceutical, Electronics, Food & Beverage and Metal Industry sectors. The TUMAC products are reliability and dependable, designed for minimum maintenance low cost. The TUMAC philosophy is to devise customer-oriented solutions and transform them into Devices-System to user needs.

The production cycle is performed in-house and the process is Constantly monitored in order to guarantee high quality standards and a reduction of final Customer Lead Time.

An efficient Technical Support Service coordinated by Customer Services Ensures problem-solving in 8h - 24h Throughout Italy and the EC countries.

High quality and exceptional quality-price ratio make TUMAC the ideal choice, and it is a reference point for the firms in the sector, our company is among the main suppliers of important and major Industrials Brand

Quality, Innovation and efficient customer service are our strengths, protecting your investment in the long term. Buy our products today with the best Quality - Price ratio on the market and if you can not find the product you are looking for in this presentation, contact our CUSTOMER SERVICE and we will identify the solution to your requirements

FMCG CONSUMER GOODS INDUSTRY "Beauty Home"

TUMAC has the best solutions and long experience in sorting, orienting and feeding of pieces to the consumer goods industry and for the "beauty home"

We are Partner of major Players of Assembly Machines and Control Platforms

PHARMACEUTICAL

The PHARMACEUTICAL and MEDICAL segment, is a very special industry, which requires maximum attention in all the design and production stages.

TUMAC is the ideal partner in this important Industrial field, where in the last years has supplied hundreds of installations.

Given the strict manufacturing standards for medical and pharmaceutical products, TUMAC works very closely with our customers at all stages of the project to ensure the areas of validation, cleanliness and guidance requirements are met.

All items are in stainless steel (AISI316L - AISI304 grade) and treated for a class ISO 6 clean room environment. All seams are fully welded and highly polished to give a smooth clean surface.

TUMAC guarantees products and high-level services to an increasingly demanding market.

COSMETICS

TUMAC has a long-standing commitment to supply systems for sorting, feeding and handling cosmetics components. Our machines are designed to suit the rapid product changes in the cosmetics industry.

Green and sustainable packaging is a major focus in cosmetics. With our extensive experience of the industry, TUMAC offers innovative solutions to meet the changing demands of the market.

AUTOMOTIVE METAL Industry

TUMAC has a long experience to provide automation solutions throughout the AUTOMOTIVE - METAL Industry, to meet the high levels of productivity and quality standards demanded by this typical Industrial Sector.

Our Systems find a wide application in cases where it is necessary to feed bulk loaded components into the bowl, automatically or individually, in the position and at the speed desired.

Screws - Bolts - Nuts - Small metal goods - Springs - Pins, Gaskets - Rivet buttons - Tighteners - Rivets - Zippers.....and much more!!!! **They NOT HAVE any more secrets for us!**

FOOD & BEVERAGE - PACKAGING

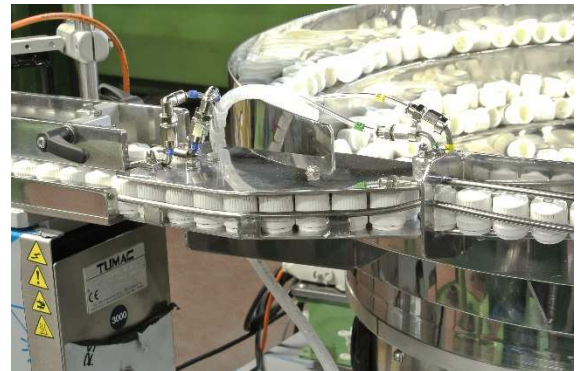
The food and beverage markets represent an important Business for TUMAC. Orientating and Feeding in the Food Industry with a wide range of the Technical Proposal.

Transfer conveyors, Bulk hopper, Vibrating Hoppers, Motorized Hoppers, Vibrating feeder, Belt Conveyors, Lifts, Elevators, Multi Step Feeders, Sorting Orientating and Feeding System.

And a News, the "Vibrating Channel conveyors"

TUMAC's innovative system for conveying in the packaging industry.

A new technology to convey, to buffer and stack food products, like crackers or biscuits, with different shapes and sizes, even filled.



For more information. PLS do not hesitate to contact us





001 REPAIR and TUNING

Vibratory Feeder Repair and Tuning Vibratory Feeder

Repair and Tuning Service TUMAC Repairs ALL makes of vibratory feeding equipment, Once the base unit is reassembled and the feeder bowl is fastened to the base unit's top casting, the tuning process begins. Every effort is made to maximize the amplitude of movement despite the mechanical limitation of each base unit and bowl combination. After the bowl reaches maximum amplitude, the technician places samples in the feeder bowl, throttles back the feeder controller and observes movement within the tooled feeder bowl. The technician assesses bowl tooling performance and considers numerous options to increase the part feed rate. If a problem exists, TUMAC will suggest a solution and provide you a quote on the repair, or direct your personnel on implementing the suggested changes. We prefer to return feeders in like-new condition. Provide TUMAC a little extra time and we will make sure the base unit is painted. To ensure the unit leaves our facility operating at 100%, the vibratory base units are disassembled and:

- Springs and spring mounting surfaces are cleaned
- Spring spacers are replaced
- Wear surfaces are inspected
- Base unit screw threads are inspected
- Coils are inspected
- Any fasteners that do not meet ADI Standards are replaced.



002 LINING SERVICES

Vibratory Bowl Lining Services

Bowl Linings Greatly Reduce Wear and Expenses

TUMAC is constantly evaluating new vibratory bowl lining options. Some offer noise reduction and all offer some level of bowl surface protection, and often part feed rates improve. See the chart below for general recommendations on various linings, along with their characteristics.

Linings reduce the noise emission of vibratory feeder bowls by providing a "cushion" between the pieces and the bowl, and by lessening the bowl's surface noise radiation characteristics. Surface preparation prior to coating is important for good bonding. For some linings, cleaning and roughening is adequate; on others, chemical preparation or priming is required.

Polyurethane linings have exceptional dampening properties. They provide a cushion between the parts in the bowl and the bowl itself (the primary source of feeder noise).

Also, polyurethane substantially reduces noise radiation from the bowl interior and exterior surfaces (the secondary major noise emission source). In addition to these features, polyurethane has proven itself to be highly resistant to abrasion.

TUMAC PolySH90 Spray demonstrates excellent wear properties in abrasive applications such as large screw and stud applications and powdered metal products among many others.

Other Standard linings are available including:

- POLYURETATHANE STD (Spray or Glued)
- TEFLON (Spray or Glued)
- ABSYTHE

Custom coatings and paints available for all equipment.

TUMAC Services can re-line your feeder with quick turnaround times.





003 MAINTENANCE

TUMAC' proposal is to provide tailor-made service packages, with dedicated ticket, according to your needs to ensure maximum reliability and optimal performance for the entire life cycle of your machines / systems
A MAINTENANCE contract is the right choice to ensure the profitability of your work in the long term.

The modular structure of our offer is possible to combine or adapt different modules. Choose one of the services is definitely an investment that pays off in the long-term operability. For more information please to contact our Customer Services to request your "CUSTOMIZED Maintenance Ticket".

- **NORMAL MAINTENANCE**
- **DAY-TO-DAY MAINTENANCE**
- **PREVENTIVE MAINTENANCE**
- **SCHEDULED MAINTENANCE**
- **UNSCHEDULED MAINTENANCE**



004 SPARE PARTS

SPARE PARTS

All spares have been designed and developed in house and are simple and easy to fit on site.

SPARE PARTS GUARANTEED

Upon request TUMAC can provide a recommended spares package for old and new equipment and can also provide training packages to suit maintenance departments

IMMEDIATE AVAILABILITY

Standard equipment immediate delivery from stock.

Technical support is run directly by TUMAC.

The Customer Services department guarantees a solution to your problem in 8h - 24h throughout Italy and in 48h in EC countries.



005 CUSTOMER SERVICES

CUSTOMER SERVICES

Technical support is run directly by TUMAC.

The Customer Services department guarantees a solution to your problem in 8h - 24h throughout Italy and in 48h in EC countries.



☎ +39 02 98281013
CUSTOMER SERVICES



TUMAC Automation Technologies

Tumac s.r.l. via della Liberazione 33/35
20098 San Giuliano Milanese Milano Italy Tel. +39 02
Phone +39 02 98281013 Fax +39 02 98281035
Internet: www.tumac.it



TUMAC *Automation Technologies*

Tumac s.r.l. via della Liberazione 33/35
20098 San Giuliano Milanese Milano Italy
Tel. +39 02 98281013 Fax +39 02 98281035
Internet: www.tumac.it



+39 02 98281013

CUSTOMER SERVICES



TUMAC *Automation Technologies*

Tumac s.r.l. via della Liberazione 33/35
20098 San Giuliano Milanese Milano Italy
Tel. +39 02 98281013 Fax +39 02 98281035
Internet: www.tumac.it



+39 02 98281013

CUSTOMER SERVICES

BIBUS[®]
SUPPORTING YOUR SUCCESS

BIBUS SK, s.r.o
Trnavská 31, SK-94 901 Nitra

Tel.: 037/ 7777 911 Email: sale@bibus.sk
Fax.: 037/ 7777 999 <http://www.bibus.sk>