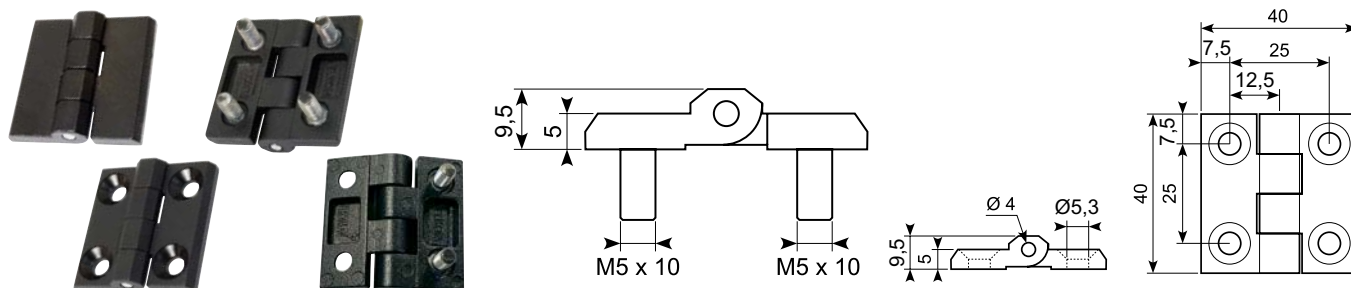


## Hængsel Hinge

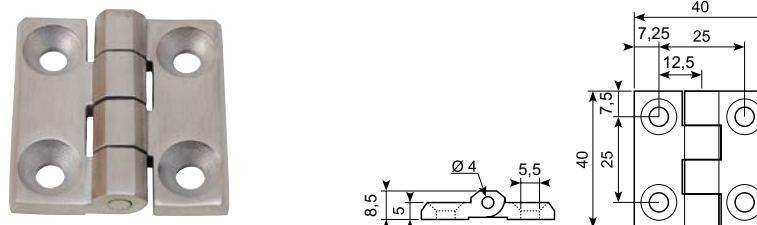


Varenr. slutter med "S": stift er rustfri stål AISI 304. *Item no. ends with "S": pin is Stainless Steel AISI 304.*

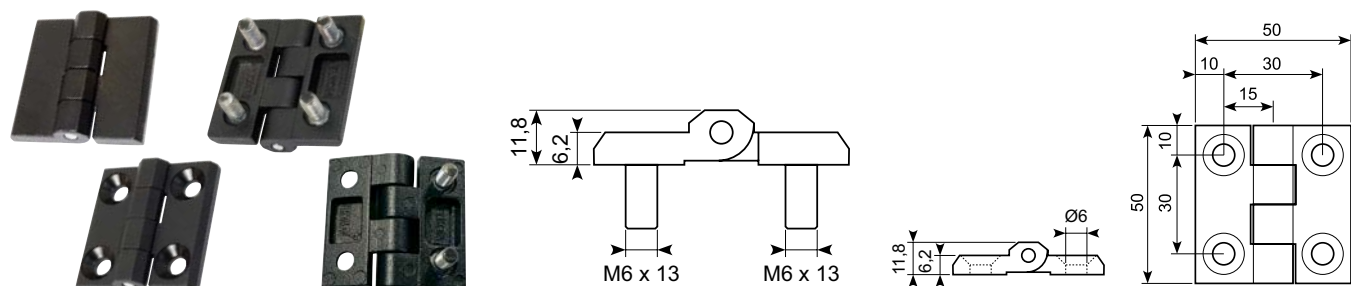
	PA, Sort <i>Black</i> PA = Nylon PA6 GFR30	Zinkstøbt, rå <i>Zinc cast, raw</i>	Zinkstøbt, sort <i>Zinc die, black coated</i>	Zinkstøbt, forkromet <i>Zinc die, chrome plated</i>
Med huller <i>With holes</i>	56.3009-100	56.3001-200		
Med huller <i>With holes</i>	56.3009-100S		56.3001-210S	56.3001-220S
Med bolte <i>With bolts</i>		56.3001-201	56.3001-211S 56.3001-211*	
En side med huller, en side med bolt <i>One side with holes, one side with bolt</i>		56.3001-205	56.3001-215	56.3001-225

### 56.3001-500

Rustfrit hængsel SS316. Rustfri SS304 stift.  
*Stainless hinge SS316. Stainless pin SS304.*



## Hængsel Hinge

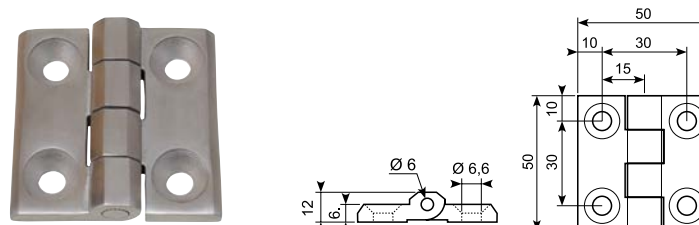


Varenr. slutter med "S": stift er rustfri stål AISI 304. *Item no. ends with "S": pin is Stainless Steel AISI 304.*

	PA, Sort <i>Black</i> PA = Nylon PA6 GFR30	Zinkstøbt, rå <i>Zinc cast, raw</i>	Zinkstøbt, sort <i>Zinc die, black coated</i>	Zinkstøbt, forkromet <i>Zinc die, chrome plated</i>
Med huller <i>With holes</i>	56.3012-100	56.3011-200		
Med huller <i>With holes</i>	56.3012-100S *		56.3011-210S	56.3011-220S
Med bolte <i>With bolts</i>		56.3011-201	56.3011-211S	56.3011-221
En side med huller, en side med bolt <i>One side with holes, one side with bolt</i>		56.3011-205	56.3011-215	56.3011-225

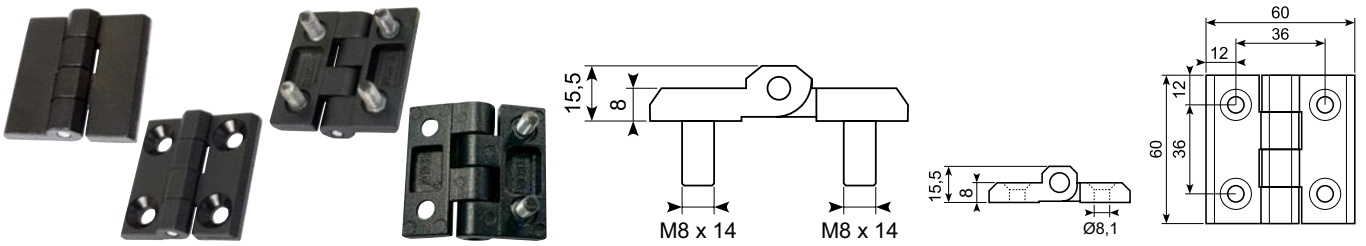
### 56.3011-500

Rustfrit hængsel SS316. Rustfri stift SS304.  
*Stainless hinge SS316. Stainless pin SS304.*



\* Skaffevare / Special order item

## Hængsel Hinge



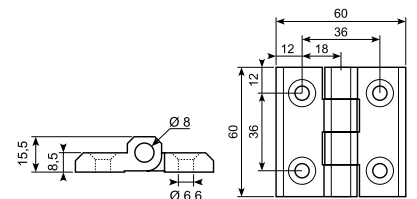
Varenr. slutter med "S": stift er rustfri stål AISI 304. *Item no. ends with "S": pin is Stainless Steel AISI 304.*

	PA, sort PA, black	Zinkstøbt, rå Zinc cast, raw	Zinkstøbt, sort Zinc die, black coated	Zinkstøbt, forkromet Zinc die, chrome plated
Med huller / <i>With holes</i>	56.3013-100	56.3013-200		
Med huller / <i>With holes</i>	56.3013-100S		56.3013-210S	56.3013-220S
Med bolte / <i>With bolts</i>		56.3013-201	56.3013-211S	56.3013-221
En side med huller, en side med bolt <i>One side with holes, one side with bolt</i>		56.3013-205	56.3013-215	56.3013-225

### 56.3013-500

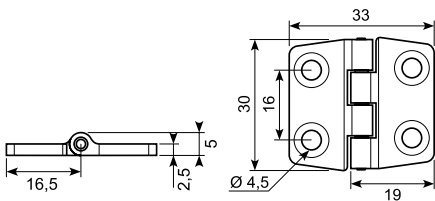
Rustfrit hængsel SS316. Rustfri stift SS304.

*Stainless hinge SS316. Stainless pin SS304.*



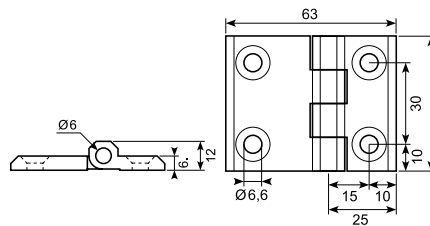
### 56.3070-210

Sort zinkstøbt hængsel med 4 huller.  
*Black zinc cast hinge with 4 holes.*



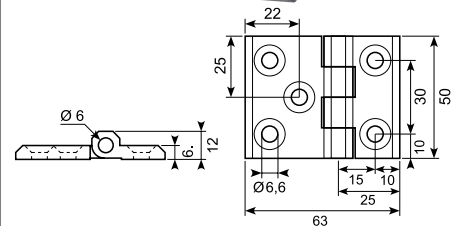
### 56.3081-210S

Sort zinkstøbt hængsel med 4 huller og rustfri stift.  
*Black zinc cast hinge with 4 holes and stainless pin.*



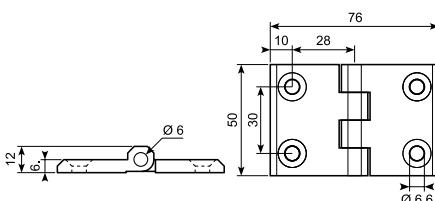
### 56.3181-210S

Sort zinkstøbt hængsel med 5 huller og rustfri stift.  
*Black zinc cast hinge with 5 holes and stainless pin.*



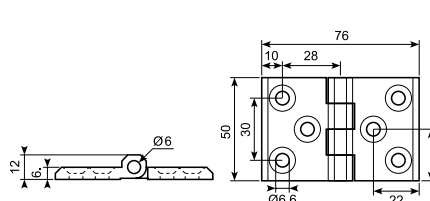
### 56.3080-210S

Sort zinkstøbt hængsel med 4 huller og rustfri stift.  
*Black zinc cast hinge with 4 holes and stainless pin.*



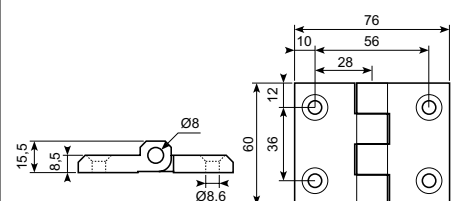
### 56.3180-210S

Sort zinkstøbt hængsel med 6 huller og rustfri stift.  
*Black zinc cast hinge with 6 holes and stainless pin.*



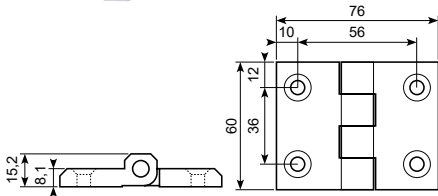
### 56.3015-210S

Sort zinkstøbt hængsel med 4 huller og rustfri stift.  
*Black zinc cast hinge with 4 holes and stainless pin.*



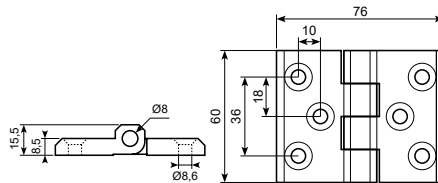
Zinkstøbt hængsel med 4 huller og stålstift.

*Zinc cast hinge with 4 holes and steel pin.*



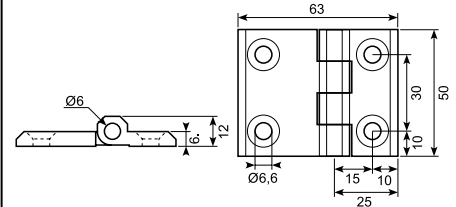
Sort zinkstøbt hængsel med 6 huller og rustfri stift.

*Black zinc cast hinge with 6 holes and stainless pin.*



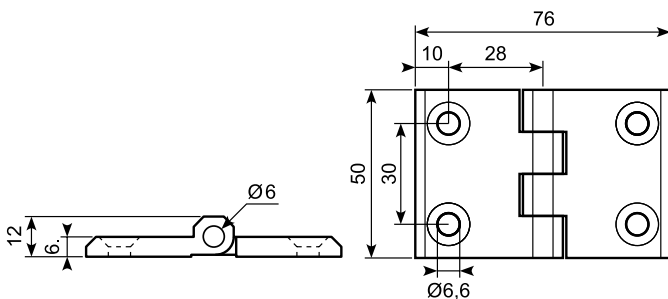
Rustfrit hængsel SS316.  
Rustfri stift SS304.

*Stainless hinge. SS316.  
Stainless pin SS304.*



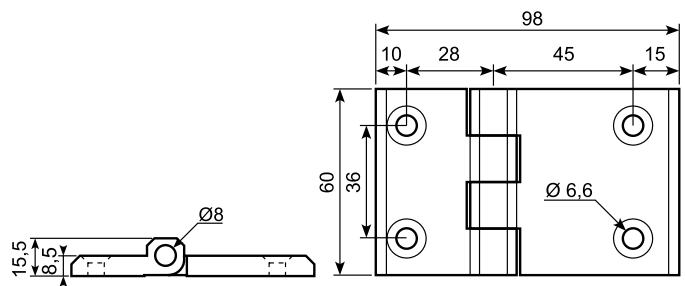
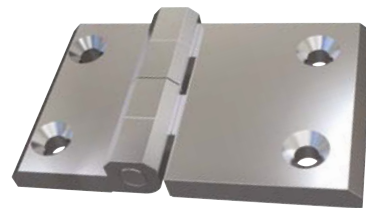
Rustfrit hængsel SS316. Rustfri stift SS304.

*Stainless hinge SS316. Stainless pin SS304.*



Rustfrit hængsel SS316.

*Stainless hinge SS316.*



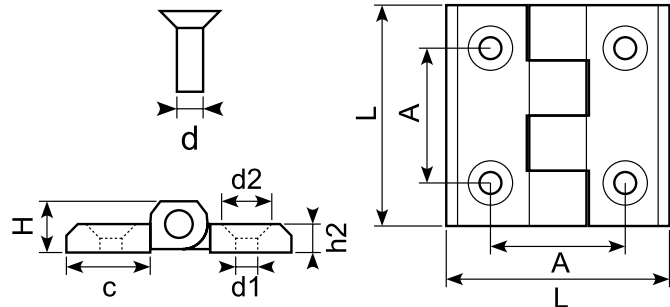
Hængsel

Hinge

Sort zinkstøbt hængsel med rustfri stift.

*Black zinc cast hinge with stainless pin. On demand with steel pin.*

Kan stoffes med jernstift.



**BIBUS**  
SUPPORTING YOUR SUCCESS

BIBUS SK, s.r.o.  
Třmauská 31, SK-94 901 Nitra

Tel.: 0371 7777 911 Email: sale@bibus.sk  
Fax.: 0371 7777 999 http://www.bibus.sk

Varenummer <i>Item no.</i>	L mm	A ± 0,25 mm	d mm	d1 mm	d2 mm	h2 mm	H mm	c mm
18.772222X	40	25	M5	Ø5,5	Ø10,5	5	9	14
18.772233X	50	30	M6	Ø6,5	Ø12,5	6	11,5	18
18.772244X	60	36	M8	Ø8,5	Ø16,5	8	15	21

Godt køb /

Best buy