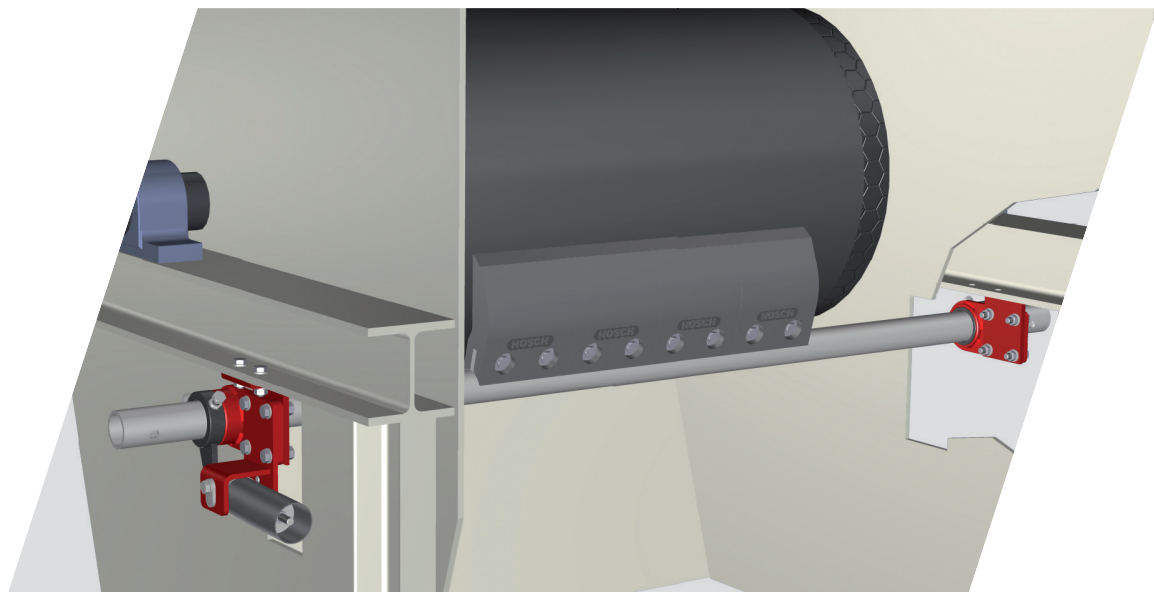


HOSCH PRE- SCRAPER



TYPE **HD-PU-L**

HOSCH Pre-Scraper Type HD-PU-L

Increased uptime to meet production targets and output demands with a reduced number of personnel is an absolute must for today's operators of conveyor belt systems worldwide. Therefore they all require scrapers that are simple and user-friendly and achieve maximum cleaning efficiency.

In case the main scraper cannot cope with the thickness of the material sticking to the belt surface, a so-called pre-scraper has to be installed.

HOSCH have taken up this challenge and have developed the **HOSCH** pre-scraper **Type HD-PU-L** with the following main features:

- Very simple handling for easy installation and easy maintenance
- Very cost-effective
- High economic efficiency in combination with the **HOSCH** main scrapers

In combination with the **HOSCH** main scrapers and their unsurpassed efficiency known world-wide, the **HOSCH** pre-scraper **Type HD-PU-L** reduces the cleaning and operating costs as well as unnecessary downtime.

Please visit us on our website www.hosch-international.com and receive some more detailed information.

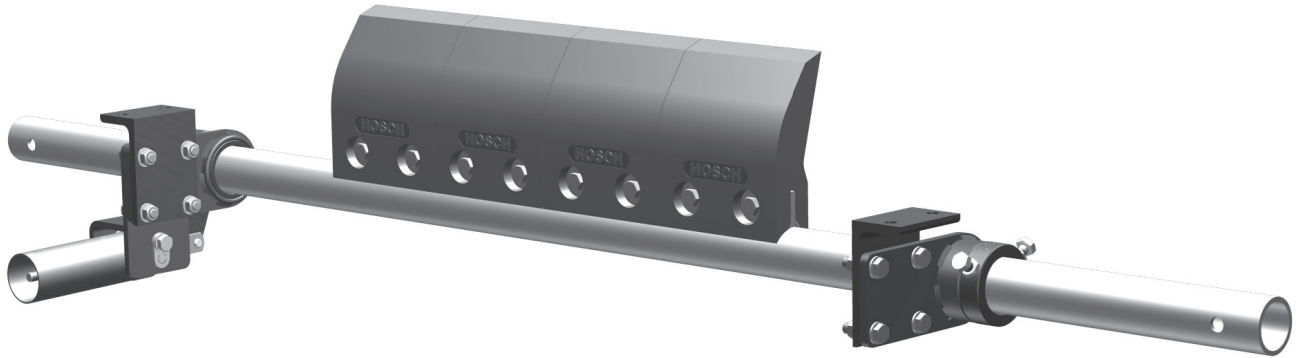
HOSCH Services

HOSCH will take care of you anywhere in the world. Please get in touch with us and we will come back to you – irrespective of where you are.

Our service comprises the following items:

- Technical analysis of your conveyor belt systems.
- Selection of suitable belt cleaning and belt tracking systems.
- OEM support and CAD supported installation drawings.
- Installation, maintenance and service of **HOSCH** systems.
- Additional support for the operation of your conveyor belt such as
 - the compilation of belt plans and maintenance statistics
 - spare parts management.
- The collection of accurate data from service visits will enable cost saving opportunities to be identified and implemented.

Characteristics of the HOSCH Pre-Scraper Type HD-PU-L



- Belt widths : 600 mm up to 2,400 mm
- Belt speeds : Up to 5.5 m/s. Up to 2.5 m/s with mechanical belt splices.
- Belt types : For multi-ply nylon and steel-cord belts with vulcanized and/or mechanical splicing. Recommended hardness > 60 Shore-A
- Runback : Yes
- Reverse operation : Yes
- Installation position : As a pre-scraper on the head-pulley, between the 3 and the 4 o'clock position.
- Cleaning modules : Polyurethane (PU) cleaning blocks
- Design : Modular scraper design, individual set-up suitable for most conveyor applications.
- Directions for use : Ideal complement to any **HOSCH** main scraper.
For further technical information, please refer to the additional documentation available such as installation and operation manuals, dimension sheets and parts lists. Use in different operating conditions must be approved by **HOSCH**.

HOSCH Headquarters

HOSCH Fördertechnik GmbH

Am Stadion 36, 45659 Recklinghausen, Germany
Tel: +49 2361 5898-0, Fax: +49 2361 589840
e-mail: mail@hosch.de, web: www.hosch.de

The HOSCH Group

HOSCH International Pty Ltd.

Perth, Australia
e-mail: mail@hosch.com.au

HOSCH Austria GmbH

Wien, Austria
e-mail: office@hosch-austria.at

HOSCH do Brasil Ltda.

Belo Horizonte, Brazil
e-mail: hosch@hosch.com.br

HOSCH France S.A.R.L.

Réau, France
e-mail: info@hosch.fr

HOSCH (G.B.) Ltd.

Thornaby, Great Britain
e-mail: mail@hosch.co.uk

HOSCH Hellas Monoprosopi E.P.E.

Thessaloniki, Greece
e-mail: hosch@otenet.gr

HOSCH Equipment (India) PVT Ltd.

Calcutta, India
e-mail: hosch@cal.vsnl.net.in

HOSCH Italia S.R.L.

Pontecagnano, Italy
e-mail: mail@hosch.it

HOSCH Asia PLT

Puchong, Malaysia
e-mail: mail@hosch-asia.com

HOSCH Techniki Transportowe Polska Sp. z o.o.

Wrocław, Poland
e-mail: hosch@hosch.pl

HOSCH Fördertechnik (SA) (Pty) Ltd.

Johannesburg, South Africa
e-mail: sales@hoschsa.co.za

HOSCH Iberia S.R.L.U.

Barcelona, Spain
e-mail: hosch@hosch.es

HOSCH Schweiz GmbH

Rotkreuz, Switzerland
e-mail: mail@hosch.de

HOSCH COMPANY

Pittsburgh, USA
e-mail: hosch@hoschusa.com



©2016 HOSCH Fördertechnik GmbH

No part of this publication may be reproduced, transmitted, transcribed, stored in any retrieval system or translated into any human or computer language by any means or in any form, without the prior written permission of HOSCH Fördertechnik GmbH. Contravention of the owner's copyright may also reduce the ability of HOSCH Fördertechnik GmbH to provide effective support for its equipment.

HOSCH Fördertechnik GmbH reserves the right to make changes without notice to both this document and to its products described within this document. Nothing in this publication represents any contractual or other commitment on the part of HOSCH Fördertechnik GmbH and should not be taken as such. All possible care has been taken in the preparation of this publication.

However, if you find any errors or would like to make suggestions for improvement then write to HOSCH Fördertechnik GmbH.