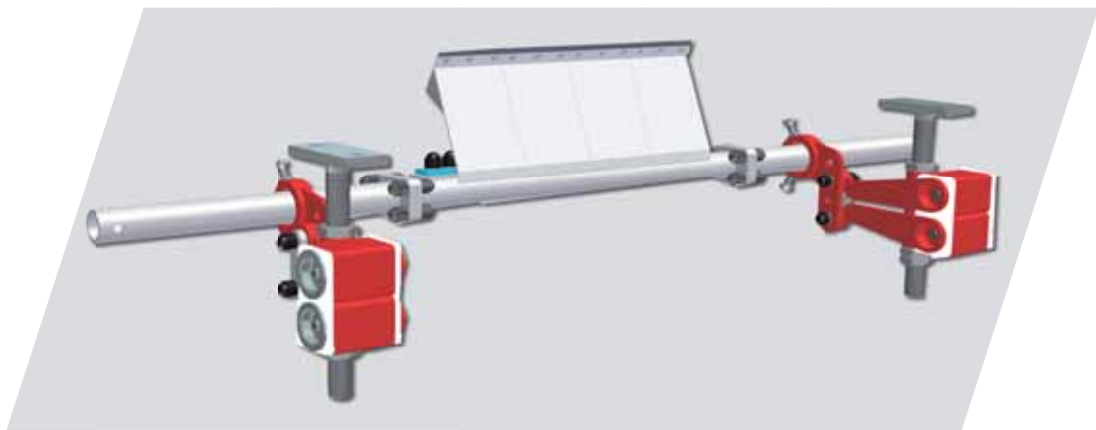
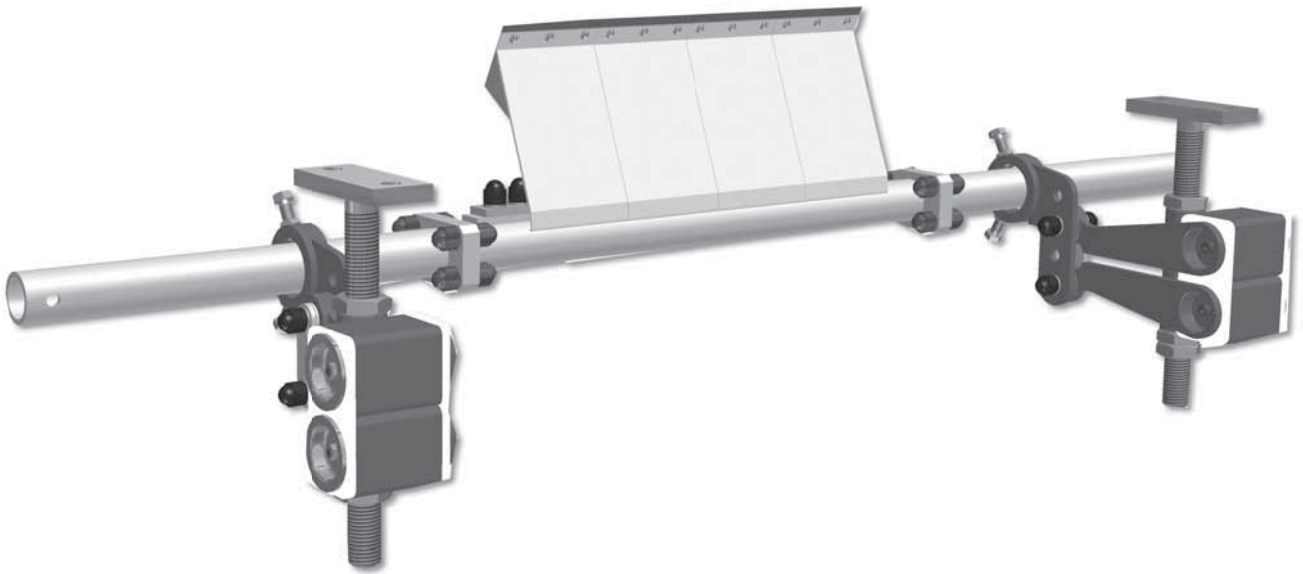


**HOSCH
SPRUNG
BLADE
SCRAPERS**



TYPE **B6L-C**



The special features of the Type B6-C/B6L-C

- Effective cleaning efficiency
- Low operating costs
- Optimum belt protection
- Continuous adjustment, self-adjusting
- Minimum installation and maintenance work
- Extremely long operating life, highly abrasion-resistant blades for all type of materials and all belt speeds
- Assembly carrier lengths and cross sections for all belt widths
- High longevity through high-quality plastic coating or galvanization
- Low space requirement thanks to its compact design
- Also suitable for reversible operation mostly without extra modifications, disengaging devices available for special applications
- The modular scraper components can be selected to suit any conveyor frame structure

Light program - B6L-C

Belt width	Cleaning width	Blades	Assembly carrier length	Assembly carrier Ø	Parallel elasto-mount	Spindle
mm	mm	Qty.	mm	mm	Type	mm
400/450	361	3	1540	Ø 48	A	M30 x 350
500/600	482	4				
650/700	602	5	1780			
750/800	722	6				

HOSCH Fördertechnik GmbH

Am Stadion 36
D-45659 Recklinghausen (Germany)
Tel. : +49 (0) 2361 / 58 98 - 0
Fax : +49 (0) 2361 / 58 98 40
eMail : mail@hosch.de

Sales Office