

OPERATION

This is a normally closed or normally open, poppet-style 10-size solenoid valve, utilizing a low power coil. For the normally closed option, in the de-energized position the valve blocks flow from port 2 to 1 and free flow is allowed from port 1 to 2. When the solenoid is energized, the valve opens in both directions. For the normally open option, the function is reversed. Free flow is allowed in both direction when de-energized, with flow blocked from port 2 to 1 and free flow from port 1 to 2 when the solenoid is energized.

APPLICATIONS

The SLP13-10 is designed for high pressure, low leakage applications where reduced power consumption is desired. It offers a reduced pressure drop compared to the SV13-10, allowing for a higher flow rating in the same cavity. It can be used in a circuit with a single acting cylinder to control motion, provide load holding, or as a general purpose diverter or dump valve.



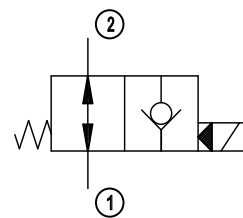
Shown with Tough Coil, Deutsch Connector

SPECIFICATIONS

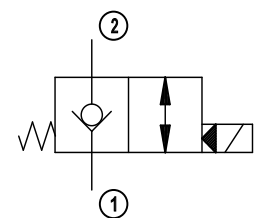
Rated pressure*	350 bar [5075 psi]
Rated flow at 7 bar [100 psi]	79 l/min [21 US gal/min]
Leakage	10 drops/min @ Rated Pressure
Weight	0.16 kg [0.35 lb]
Cavity	SDC10-2, C-10-2
Oil Temperature Range	-40 to 100 °C (-40 to 212 °F)
Nominal Viscosity Range	5 to 500 cSt
Coil	J series 10 Watt (Low Power)

*Rated pressure for 1 million cycles

SCHEMATIC



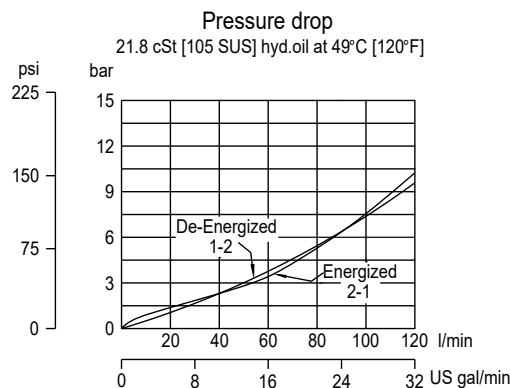
Normally Open (-O)



Normally Closed (-C)

PERFORMANCE CURVES

Cartridge Only





Solenoid Valves Technical Information

2-Way Poppet (Low Power, High Flow)

SLP13-10-C/O



BIBUS
SUPPORTING YOUR SUCCESS

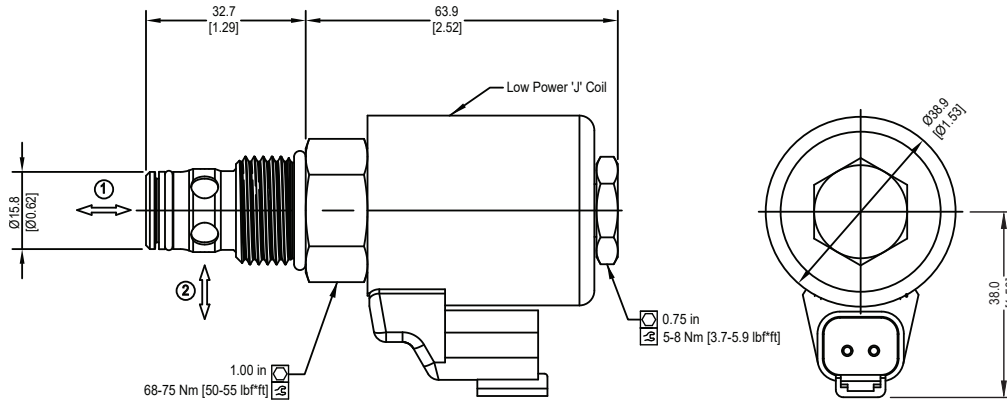
BIBUS SK, s.r.o.
Trnavská 31, SK-94 901 Nitra

Tel.: 0371 7777 911 Email: sale@bibus.sk
Fax.: 0371 7777 999 http://www.bibus.sk

DIMENSIONS

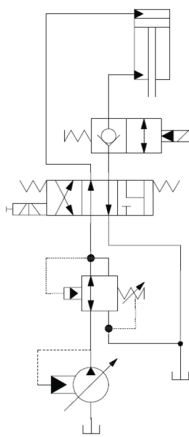
mm [in]

Cross-sectional view

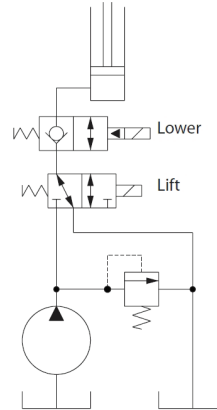


EXAMPLE CIRCUITS

Height Control with Float Option



Lift, Hold, & Lower Single Acting Cylinder



ORDERING INFORMATION

SLP13 - 10 X - C X - X 2G - 12D N J BJ

Solenoid Valve, High Flow,
Low Power, High Pressure, 10 size

Seal Option		
Code	Material	Seal Kits
Blank	Buna	SK-10-2
V	Viton	SK-10V-2

Style	
Code	Description
C	Normally Closed
O	Normally Open

Manual Override	
Code	Description
Blank	No Override

Body Material	
Code	Description
Blank	Cartridge Only
S	Steel
A	Aluminum

*Aluminum bodies are only to be used for pressures less than 210 bar (3,000 PSI)

Coil Voltage	
Code	Voltage
00	No Coil
120	12VDC
240	24VDC

Bodies		
Code	Port Size	Housing Number (Steel)
0	Cartridge Only	No Body
2G	1/4" BSPP	A-3479-001
3G	3/8" BSPP	A-3479-002
6T	SAE 6	A-3479-003
8T	SAE 8	A-3479-004

Coil Series	
Code	Power
J	10 Series, 10W

Coil Special Feature	
Code	Option
Blank	No Coil
BJ	Low Power (10W)

Coil Termination	
Code	Voltage
Blank	No Coil
G	ISO 4400 DIN 43650
W	Flying Lead
N	Deutsch (DC only)
Y	Amp Jr (DC only)
D	Metripack 150 male (DC only)
J	Metripack 280 male (DC only)
E	Weather-Pack (Packard) female on leads
F	Weather-Pack (Packard) male on leads