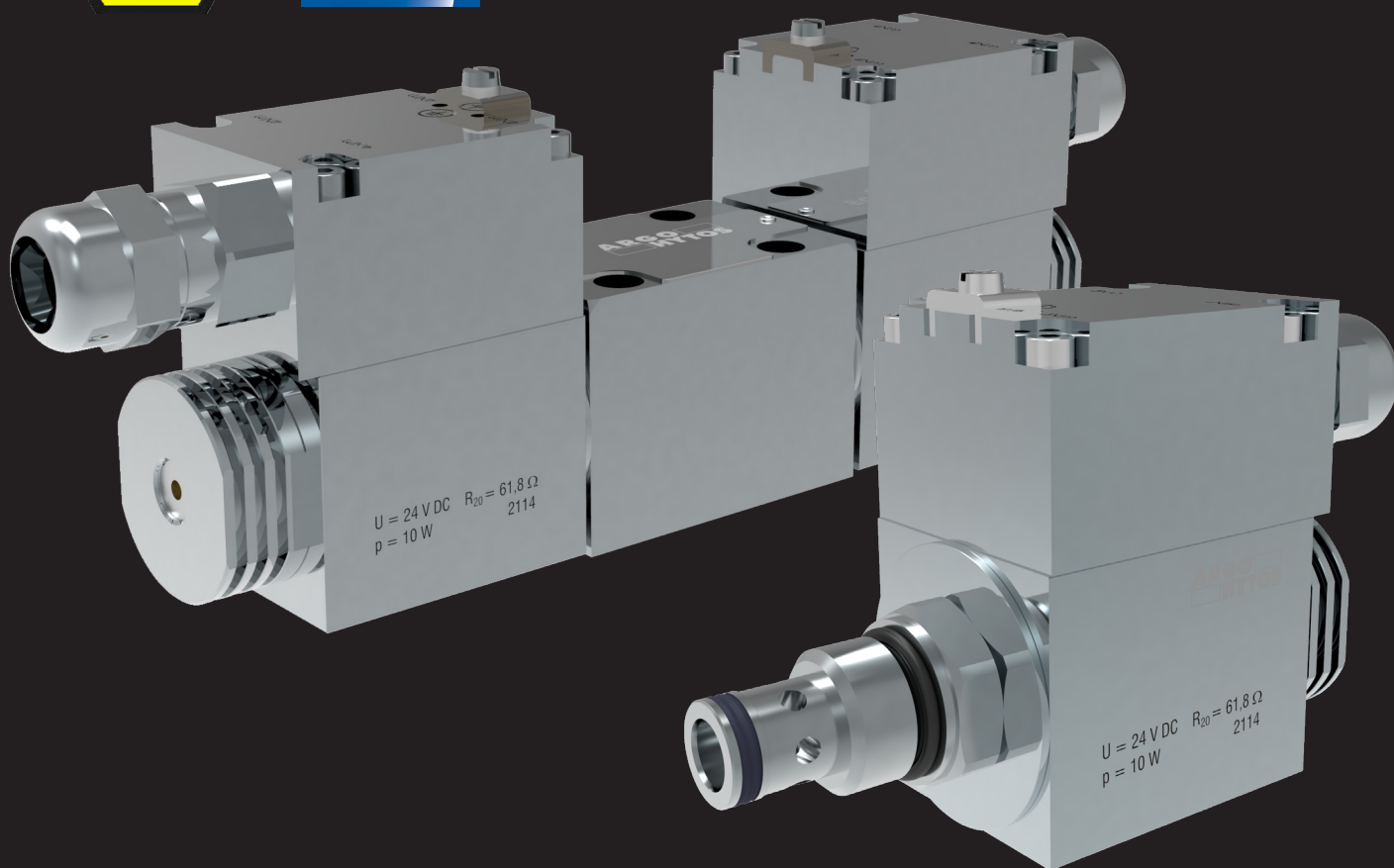


We produce fluid power **solutions**

ARGO
HYTOS

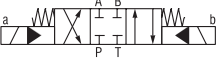
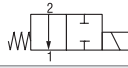
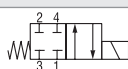
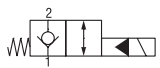
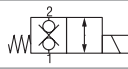
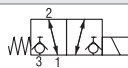
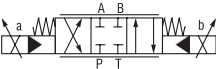
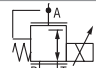


Ex-proof

APPLICATIONS

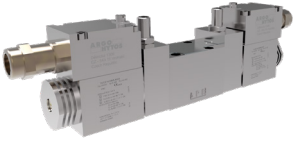
The explosion-proof ARGO-HYTOS valves open you world for dangerous application in order to have safety environment



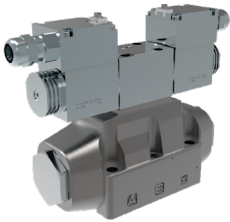
Symbol	Type Code Data Sheet	Size	Flow/Pressure lpm (GPM) / bar (PSI)
Explosion Proof, 4/2 and 4/3, Directional Control Valve, Solenoid Operated			
	RPEX3-06 HA 4054	Size 06 (D03)	60 (16) / 350 (5100)
	Explosion Proof, 4/2 and 4/3, Directional Control Valve - Spool Position Monitoring		
	RPEX3-06*S6 HA 4094	Size 06 (D03)	60 (16) / 350 (5100)
	Explosion Proof, Auxiliary Lever Override for Solenoid Operated Valves		
	RPERX3-06 HA 4095	Size 06 (D03)	60 (16) / 350 (5100)
Explosion-proof, 4/2 and 4/3 Directional Control Valve, Pilot Operated			
	RNEXH1-10 HA 4077	Size 10 (D05)	150 (40) / up to 420 (6100)
	Explosion-proof, 4/2 and 4/3 Directional Control Valve, Pilot Operated		
	RNEXH5-16 HA 4058	Size 16 (D07)	300 (80) / up to 420 (6100)
	Explosion-proof, 4/2 and 4/3 Directional Control Valve, Pilot Operated		
	RNEXH4-25 HA 4059	Size 25 (D08)	600 (160) / up to 420 (6100)
Explosion Proof 2/2 Directional Valve, Solenoid Operated, Spool Type, Direct Acting			
	SD2EX-B2 HA 4064	7/8-14 UNF	45 (12) / 350 (5100)
Explosion Proof 3/2 Directional Valve, Solenoid Operated, Spool Type, Direct Acting			
	SD2EX-B3 HA 4065	7/8-14 UNF	60 (16) / 350 (5100)
Explosion Proof 4/2 Directional Valve, Solenoid Operated, Spool Type, Direct Acting			
	SD2EX-B4 HA 4066	7/8-14 UNF	50 (13) / 350 (5100)
Explosion Proof 2/2 Directional Valve, Solenoid Operated, Poppet Type, Piloted			
	SD3EX-B2 HA 4067	7/8-14 UNF	75 (20) / 420 (6100)
	Explosion Proof 2/2 Directional Valve, Solenoid Operated, Poppet Type, Piloted		
	SD3EX-C2 HA 4089	1 1/16-12 UN	150 (40) / 350 (5100)
Explosion Proof 2/2 Directional Valve, Solenoid Operated, Poppet Type, Direct Acting			
	SD1EX-A2 HA 4088	3/4-16 UNF	30 (8) / 350 (5100)
Explosion Proof 3/2 Directional Valve, Solenoid Operated, Poppet Type, Direct Acting			
	SD1EX-A3 HA 4068	3/4-16 UNF	40 (11) / 350 (5100)
Explosion Proof 4/3 Proportional Control Valve, Screw-in, Cartridge Design			
	SD2PX-B4 HA 5186	7/8-14 UNF	25 (7) / 250 (3630)
	Explosion Proof Proportional Directional Control Valve		
	PRMX2-06 HA 5183	Size 06 (D03)	28 (7.4) / 350 (5100)
	Explosion Proof Proportional Directional Control Valve, Pilot Operated		
	PRMX8-06 HA 5185	Size 06 (D03)	140 (37) / 350 (5100)
Explosion Proof Proportional Pressure Control Valve, Reducing - Relieving, Direct-Acting			
	PVRMX3-103 HA 5184	M24x1.5	40 (11) / 90 (1300)

Key Shot

RPEX3-06*S6



RNEXH5-16



SD2EX-B2



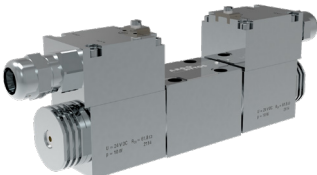
SD3EX-C2



SD1EX-A3



PRMX2-06



PVRMX3-103



We produce fluid power **solutions**



EXPLOSION PROOF Valves...

...the explosion-proof ARGO HYTOS valves open you world for dangerous application in order to have safety environment...



ATEX Certificates Review:

Voltage	ATEX Certificate N.: EPS14ATEX1744 X	ATEX Certificate N.: IECEx EPS14.0064 X
AC	I M2 Ex mb I Mb	Ex mb I Mb
	II 2G Ex mb IIB T4, T5, T6 Gb	Ex mb IIB T4, T5, T6 Gb
	II 2D Ex mb IIIC T135°C, T100°C, T85°C Db	Ex mb IIIC T135°C, T100°C, T85°C Db
DC	I M2 Ex e mb I Mb	Ex e mb I Mb
	II 2G Ex e mb IIB T4, T5, T6 Gb	Ex e mb IIB T4, T5, T6 Gb
	II 2D Ex tb IIIC T135°C, T100°C, T85°C Db	Ex tb IIIC T135°C, T100°C, T85°C Db

- > Wide range of temperature class T4, T5, T6
- > Wide range of applications – Gas (IIB), Dust (IIIC) and Mining (M2)
- > Worldwide use through IECEx and ATEX certificate
- > ATEX, IECEx solenoid certifications unified design for all Zones and Areas

Explosion Proof Solenoid:

- > Terminal box instead of pig tail cable opens a wide range of cables.
- > Robust valve and solenoid design (Mining mechanical impact test proven)
- > AC and DC types with low 10 W and high power 18 W Version
- > Up to + 70 °C ambient temperature
- > High efficiency requires low electrical power.
- > Solenoid interchangeability between Cartridge and CETOP Modular valves

Technical Features:

- > Directional spool, poppet and Proportional valves
- > Wide range of manual overrides including hand lever options
- > Exceptional high hydraulic power in world-wide range
- > All valve ranges designed for 10 Mio life time test also for sealing
- > Ultra-tight poppet valves for pressure rating 420 bar
- > Pressure range 350 bar for spools and 420 bar for poppet versions,
- > Flow range from 25 lpm to 600 lpm
- > Surface protection 520 h acc.to ISO 9224 Standard
- > SIC Spool valves with feature of tumbling nose to compensate misalignments of cavity production spool never blocks!

Zone / Division clasification

Zone → EU → ATEX & IECEx directives
Division or Zone → US → NEC 500 & NEC 505 directives

Simplified:

NEC 505 = IEC



NEC 500 ≠ IEC

There are both possibilities in US either NEC 500 or NEC 505

		Flammable Material		
		Present Continuously	Present Intermittently	Present Abnormally
IEC/EU		Zone 0	Zone 1	Zone 2
US	NEC [®] 505	Zone 0	Zone 1	Zone 2
	NEC [®] 500	Division 1		Division 2
CA	CEC	Zone 0	Zone 1	Zone 2
	Section 18			
	CEC Annex J	Division 1		Division 2

BIBUS[®]
SUPPORTING YOUR SUCCESS

BIBUS SK, s.r.o
Trnavská 31, SK-94 901 Nitra

Tel.: 037/ 7777 911 Email: sale@bibus.sk
Fax.: 037/ 7777 999 http://www.bibus.sk

