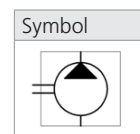



Technical Features

- › Operating pressure 200 bar, Peak pressure 250 bar
- › Cost effective design for circuits with a lower operating pressure
- › High quality aluminum alloys pump with axial play compensation
- › Service life for 1 800 operation hours
- › Volumetric efficiency up to 96 %


Technical Data

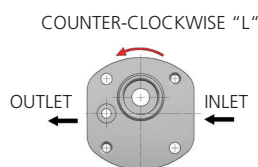
| Nominal Size Parameters | Symbol | Unit | Displacement | | | | | |
|-------------------------|-----------------|--------------------|-----------------|-------|-------|-------|-------|-------|
| | | | Code | 0,25 | 0,32 | 0,40 | 0,50 | 0,63 |
| Actual displacement | V _g | [cm ³] | 0,26 | 0,32 | 0,38 | 0,50 | 0,65 | 0,88 |
| | | [in ³] | 0.0159 | 0.020 | 0.023 | 0.031 | 0.040 | 0.054 |
| Rotation speed | nominal | n _n | 1500 | | | | | |
| | minimum | n _{min} | 1000 | | | | | |
| | maximum | n _{max} | 7000 | | | | | |
| Pressure at inlet | minimum | p _{1min} | -0,3 (-4.4 PSI) | | | | | |
| | maximum | p _{1max} | 0,5 (7.3 PSI) | | | | | |
| Pressure at outlet | max. continuous | p _{2n} | 200 | | | | | |
| | | [PSI] | 2901 | | | | | |
| | maximum | p _{2max} | 230 | | | | | |
| | | [PSI] | 3336 | | | | | |
| | peak | p ₃ | 250 | | | | | |
| | | [PSI] | 3626 | | | | | |
| Weight | m | [kg] | 0,37 | 0,38 | 0,38 | 0,38 | 0,39 | 0,40 |
| | | [lbs] | 0.82 | 0.84 | 0.84 | 0.84 | 0.86 | 0.88 |

- 1) p_{2n} maximum continuous pressure - maximum working pressure, at which the pump can be operated without time limitation.
- 2) p_{2max} maximum pressure - maximum pressure permissible for a short time, max. 20 s.
- 3) p₃ peak pressure - short-time pressure (fractions of a second) arising in case of a sudden change of the operating mode; any excess of this pressure during operation is impermissible.

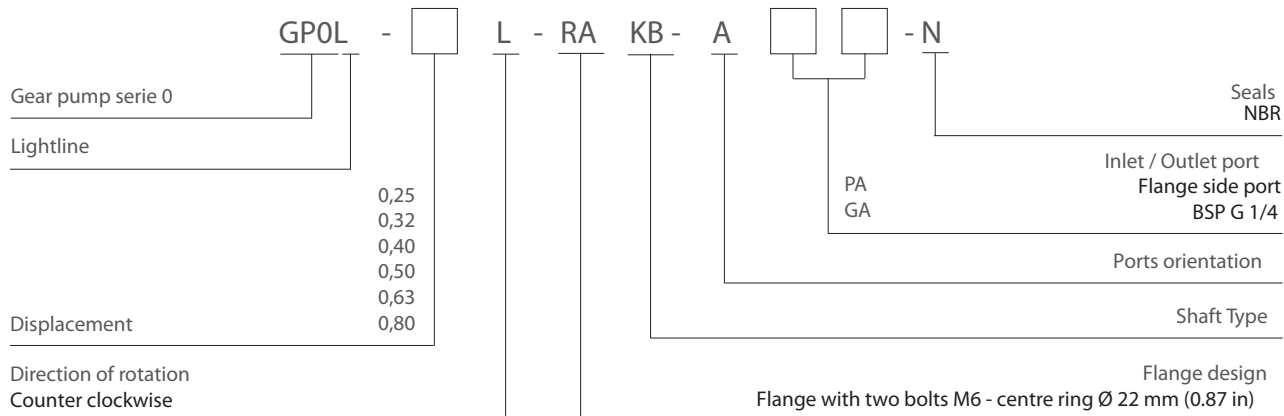
| Gear Pump / Size | | GPOL - 0,26 ... 0,88 ccm |
|---|--------------------------|--|
| Volumetric efficiency | % | 89 ÷ 96 |
| Mechanical efficiency | % | 85 |
| Fluid temperature range (NBR) | °C (°F) | -20...80 (-4...176) |
| Viscosity range | mm ² /s (SUS) | 20 ...80 (97 ...390), 1200 (5849) for cold start |
| Hydraulic fluid | | Hydraulic oils of power classes (HL, HLP) to DIN 51524 |
| Max. degree of fluid contamination for p ₂ ≤ 200 bar | | Class 21/18/15 acc. to ISO 4406 |
| Max. degree of fluid contamination for p ₂ ≥ 200 bar | | Class 20/17/14 acc. to ISO 4406 |

Direction of rotation

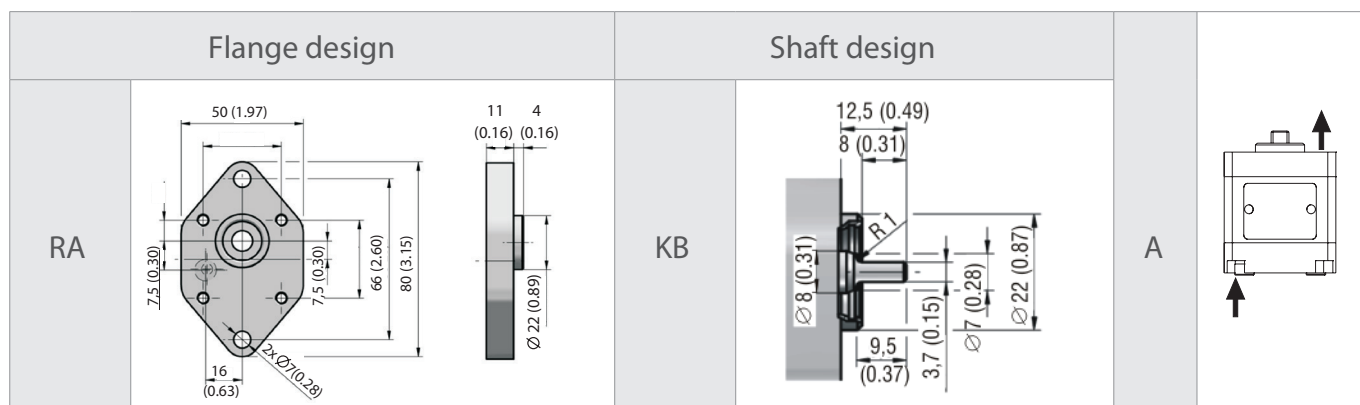
The pump can be used only in the specified direction of rotation.



Ordering Code

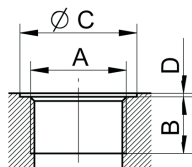


Combination of Flange and Shafts and Port orientation in millimeters (inches)



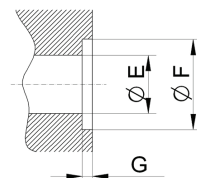
Ports design in millimeters (inches)

Dimensions of thread



| Displacement [cm ³ (in ³)] | Code | Inlet / Outlet | | |
|---|------|----------------|-----------|-----------|
| | | A | B | C |
| All | GA | G1/4 | 12 (0.47) | 26 (1.02) |

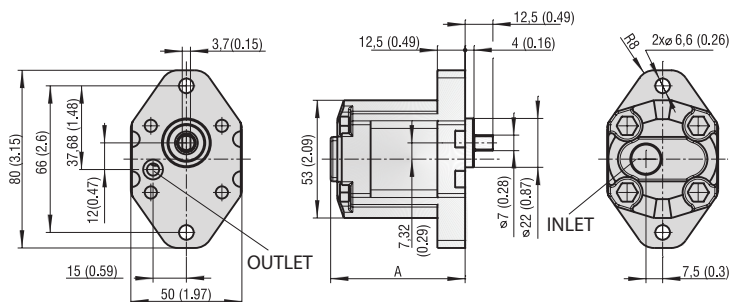
Inlet / outlet



| Displacement [cm ³ (in ³)] | Code | Inlet / Outlet | | |
|---|------|----------------|------------|------------|
| | | E | F | G |
| All | PA | 5,5 (0.22) | 8,9 (0.35) | 1,1 (0.04) |

Pump design in millimeters (inches)

GPOL-*L-RAKB-AGAPA-N



| Ordering Code | Displacement [cm ³ (in ³)/rev] | A |
|-------------------------|---|------|
| GPOL-0.25L-RAKB-AGAPA-N | 0,26 (0.016) | 60,7 |
| GPOL-0.32L-RAKB-AGAPA-N | 0,32 (0.020) | 61,1 |
| GPOL-0.40L-RAKB-AGAPA-N | 0,38 (0.023) | 61,5 |
| GPOL-0.50L-RAKB-AGAPA-N | 0,50 (0.031) | 62,5 |
| GPOL-0.63L-RAKB-AGAPA-N | 0,65 (0.040) | 63,5 |
| GPOL-0.80L-RAKB-AGAPA-N | 0,88 (0.054) | 65,5 |

BIBUS[®]
SUPPORTING YOUR SUCCESS

BIBUS SK, s.r.o
Trnavská 31, SK-94 901 Nitra

Tel.: 037/ 7777 911 Email: sale@bibus.sk
Fax.: 037/ 7777 999 http://www.bibus.sk